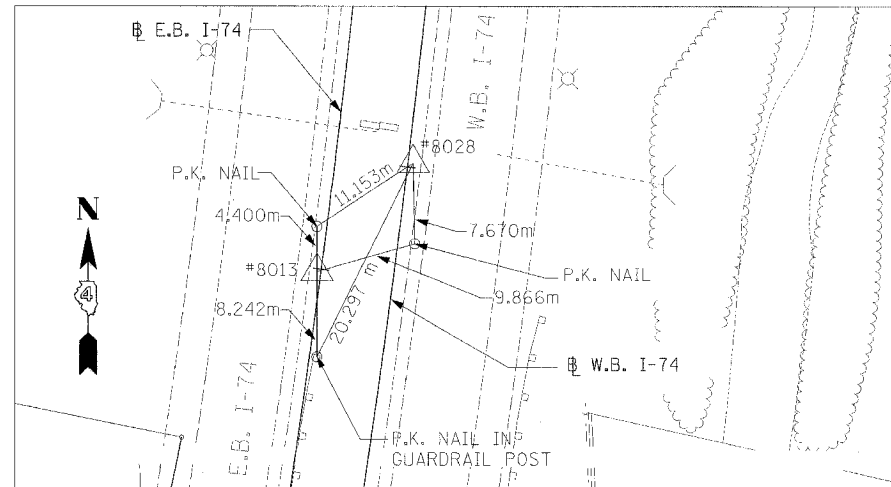
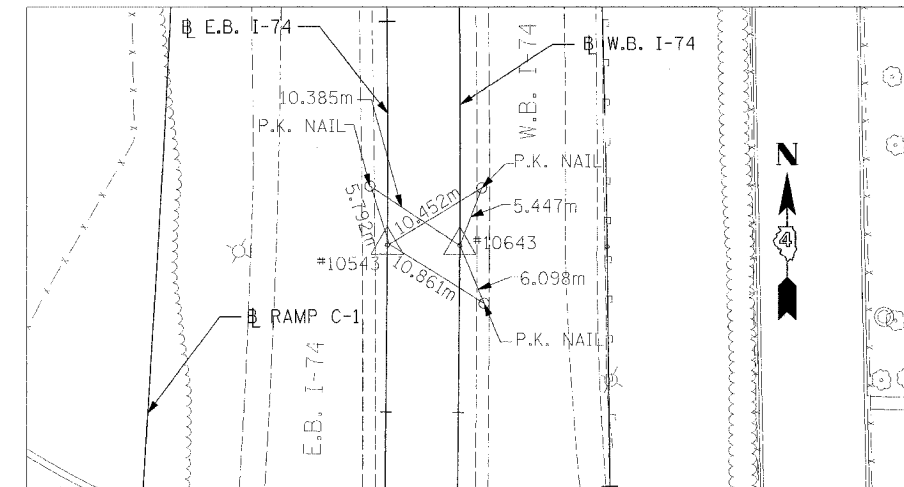


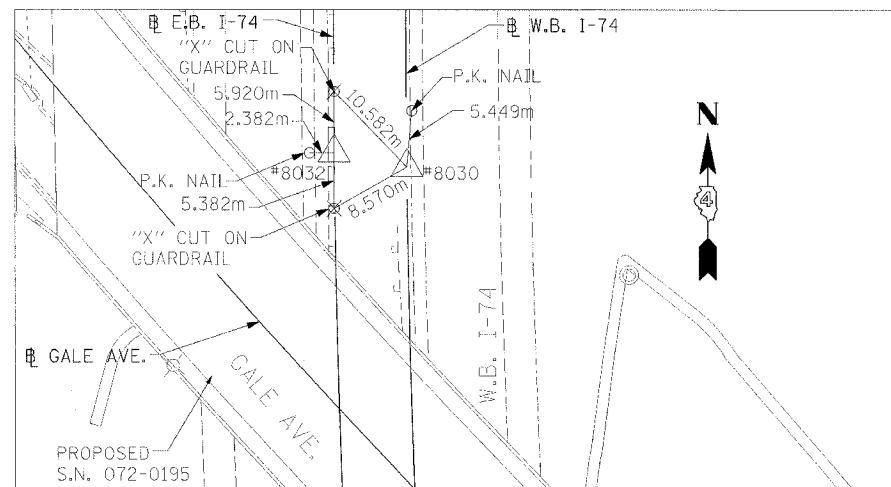
F.A.I. RTE.	SECTION	COUNTY	TOTAL SHEETS	SHEET NO.
74	(72-7)R-3	PEORIA	1360	718
STA.		TO STA.		
FED. ROAD DIST. NO.	ILLINOIS	FED. AID PROJECT		
• (72-7)R				



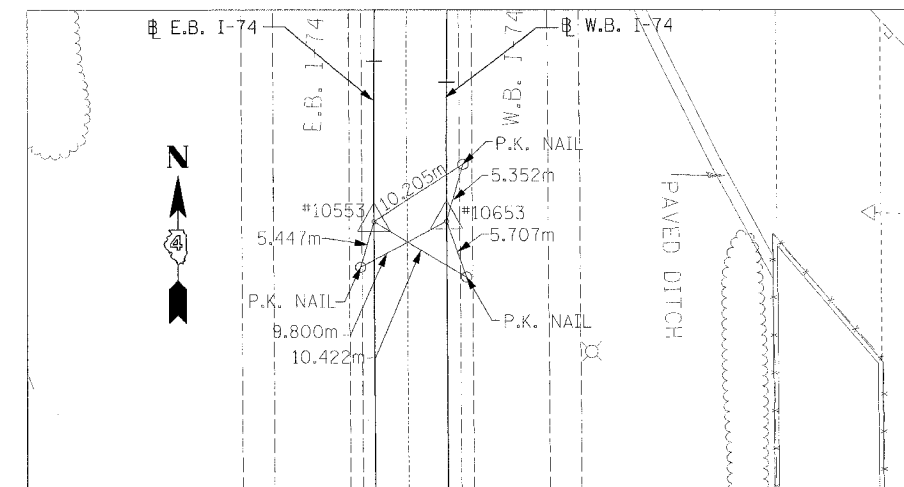
REFERENCE POINTS - 8013 & 8028



REFERENCE POINTS - 10543 & 10643



REFERENCE POINTS - 8030 & 8032



REFERENCE POINTS - 10553 & 10653

POINT #	STATION	DESCRIPTION	COORDINATES	
			NORTHING	EASTING
IAS8013	EB 144+699.699	I.R. SET	450,725.6332	746,212.0671
IAS8028	WB 144+699.700	I.R. SET	450,735.5770	746,220.3887
IAS8030	WB 145+299.665	I.R. SET	450,153.7913	746,079.2712
IAS8032	EB 145+299.665	I.R. SET	450,156.0307	746,072.4836
10543	EB 144+921.574 BK = EB 144+933.854 AH	I.R. SET, PT	450,509.7483	746,162.3345
10553	EB 145+415.542	I.R. SET, PT	450,040.4727	746,064.4592
10643	WB 144+933.853	I.R. SET, PT	450,507.5364	746,168.9751
10653	WB 145+413.454 BK = WB 145+415.542 AH	I.R. SET, PT	450,040.3107	746,071.4578

REVISIONS		ILLINOIS DEPARTMENT OF TRANSPORTATION
NAME	DATE	
		<p>REFERENCE TIES &amp; BENCHMARKS FAI ROUTE 74 (I-74)</p> <p>DATE 11/23/04</p> <p>DRAWN BY MGM CHECKED BY RDY</p>



I:\Projects\74\74-7R-3\74-7R-3.dwg 11/23/04 10:30:30 AM