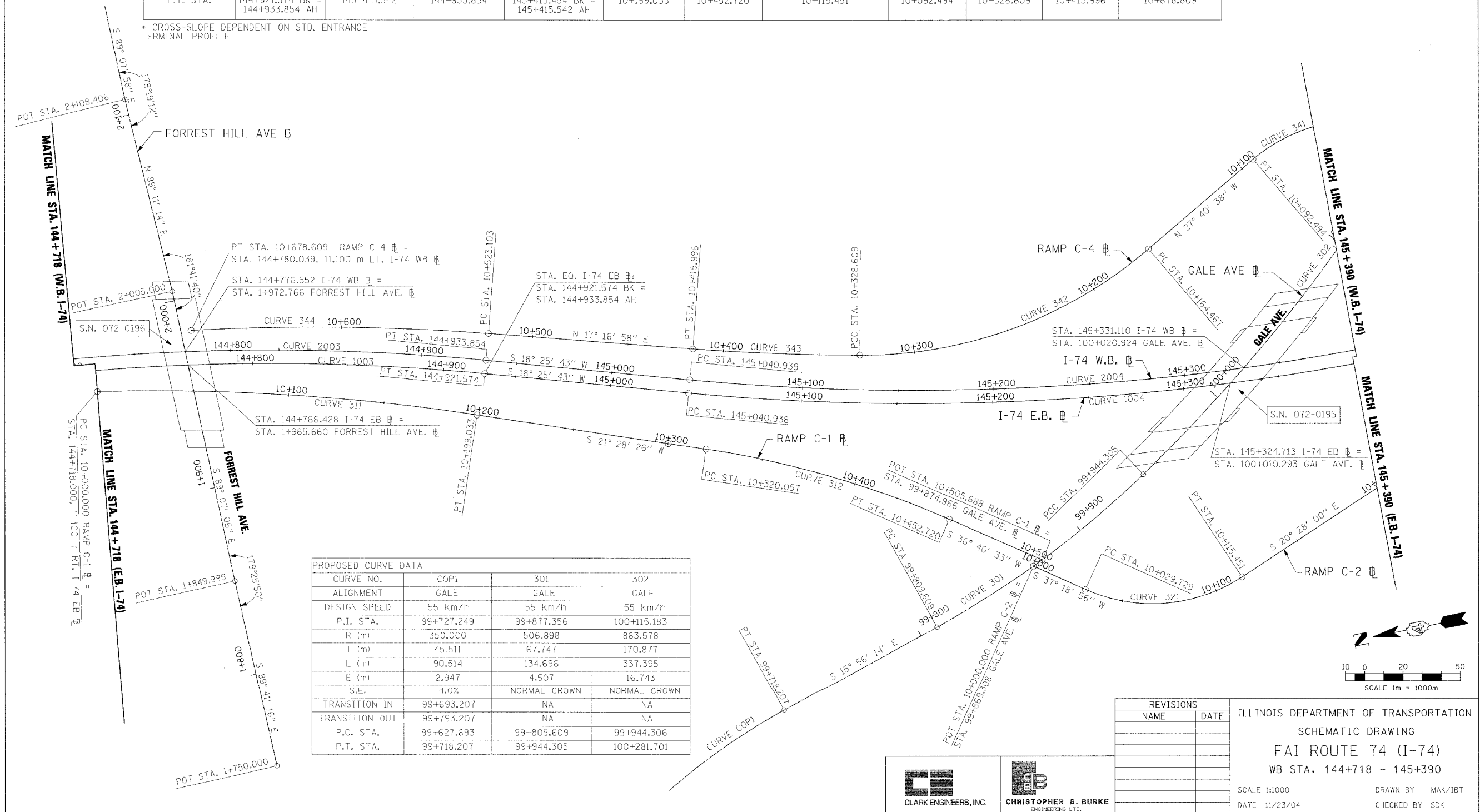


PROPOSED CURVE DATA											
CURVE NO.	1003	1004	2003	2004	311	312	321	341	342	343	344
ALIGNMENT	E.B. I-74	E.B. I-74	W.B. I-74	W.B. I-74	RAMP C-1	RAMP C-1	RAMP C-2	RAMP C-4	RAMP C-4	RAMP C-4	RAMP C-4
DESIGN SPEED	110 km/h	110 km/h	110 km/h	110 km/h	80 km/h	80 km/h	50 km/h	50 km/h	80 km/h	110 km/h	110 km/h
P.I. STA.	144+278.918	145+229.644	144+287.337	145+228.592	10+099.767	10+386.780	10+076.635	10+063.535	10+250.208	10+372.321	10+600.967
R (m)	1165.000	1255.000	1172.000	1218.000	1147.138	500.000	85.000	85.000	230.000	1230.000	1185.850
T (m)	1401.087	188.705	1409.506	187.653	99.767	66.723	46.905	31.666	85.741	43.712	77.865
L (m)	2043.743	374.604	2056.022	372.515	199.033	132.662	85.722	60.624	164.141	87.387	155.506
E (m)	657.161	14.108	661.110	14.029	4.330	4.432	12.083	5.707	15.462	0.776	2.554
S.E.	4.30%	-4.10%	4.30%	-4.10%	4.30%	5.80%	-4.00%	-4.00%	8.00%	*	FOLLOWS
TRANSITION IN	142.821-142.900	144+988-145+073	142+821-142+900	144+988-145+073	EXIT TERM.	10+292-10+334	10+020-10+034	10+029-10+033	10+112-10+190	*	MAINLINE
TRANSITION OUT	144+891-144+988	145+388-145+500	144+903-144+988	145+385-145+487	10+190-10+217	10+442-10+474	10+102-10+143	10+082-10+112	10+288.609 - * - 10+418.615	*	CROSS SLOPE
P.C. STA.	142+877.831	145+040.938	142+877.831	145+040.939	10+000.000	10+320.057	10+029.729	10+031.869	10+164.467	10+328.609	10+523.103
P.T. STA.	144+921.574 BK = 144+933.854 AH	145+1415.542	144+933.854	145+413.454 BK = 145+415.542 AH	10+199.033	10+452.720	10+115.451	10+092.494	10+328.609	10+415.996	10+678.609

* CROSS-SLOPE DEPENDENT ON STD. ENTRANCE TERMINAL PROFILE

F.A.I. RTE.	SECTION	COUNTY	TOTAL SHEETS	SHEET NO.
74	(72-7)R-3	PEORIA	1360	92a
STA.	TO STA.			
FED. ROAD DIST. NO.	ILLINOIS FED. AID PROJECT			

NOTE:
1. SEE SUPER ELEVATION TRANSITION DETAILS, SUPER ELEVATION DATA, AND RAMP GORE ELEVATION DETAILS FOR ADDITIONAL SUPER ELEVATION INFORMATION.



PROPOSED CURVE DATA			
CURVE NO.	COPI	301	302
ALIGNMENT	GALE	GALE	GALE
DESIGN SPEED	55 km/h	55 km/h	55 km/h
P.I. STA.	99+727.249	99+877.356	100+115.183
R (m)	350.000	506.898	863.578
T (m)	45.511	67.747	170.877
L (m)	90.514	134.696	337.395
E (m)	2.947	4.507	16.743
S.E.	4.0%	NORMAL CROWN	NORMAL CROWN
TRANSITION IN	99+693.207	NA	NA
TRANSITION OUT	99+793.207	NA	NA
P.C. STA.	99+627.693	99+809.609	99+944.306
P.T. STA.	99+718.207	99+944.305	100+281.701

REVISIONS	
NAME	DATE

ILLINOIS DEPARTMENT OF TRANSPORTATION
SCHEMATIC DRAWING
FAI ROUTE 74 (I-74)
WB STA. 144+718 - 145+390
SCALE 1:1000
DATE 11/23/04
DRAWN BY MAK/IBT
CHECKED BY SDK

