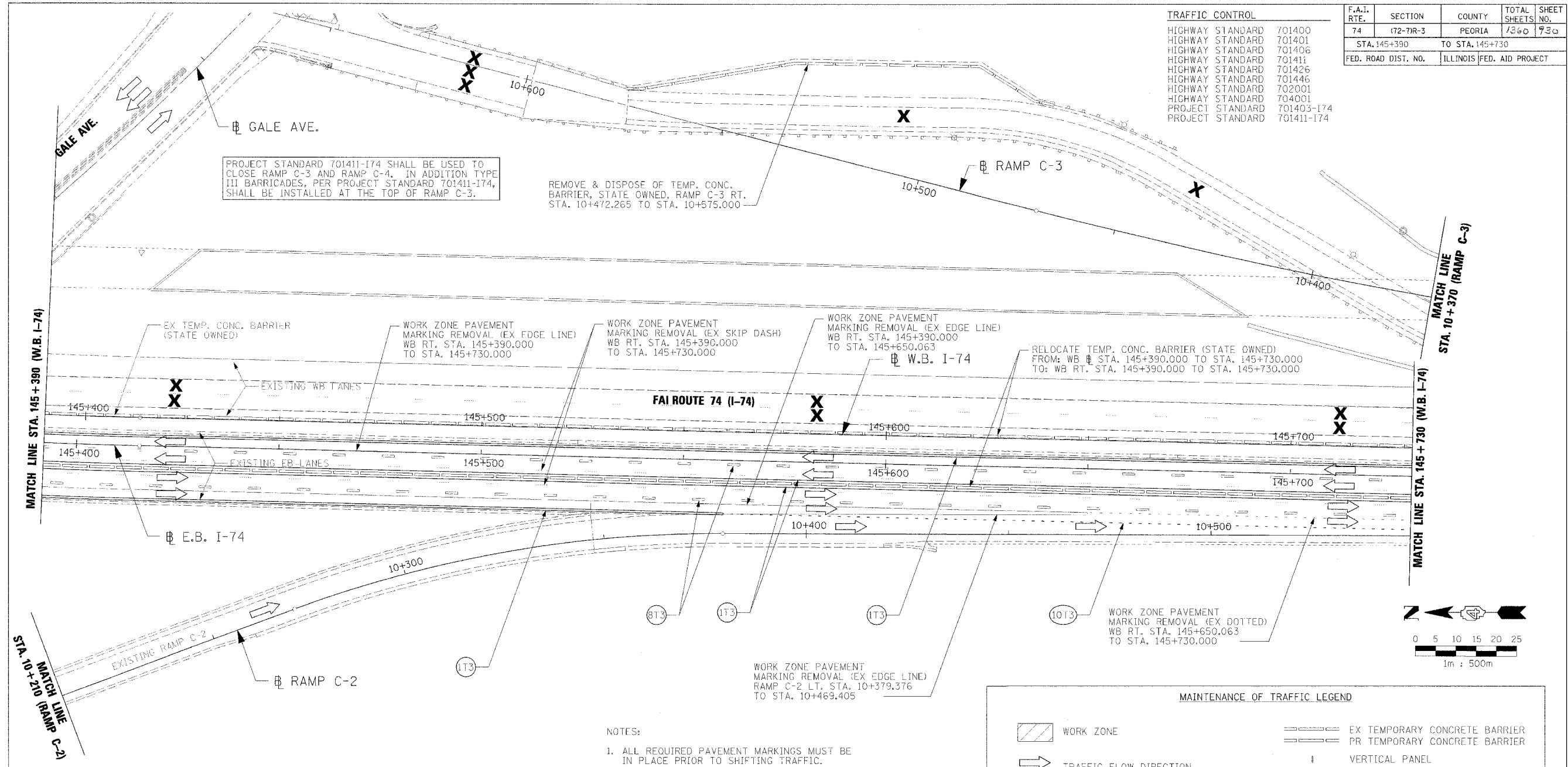


F.A.I. RTE.	SECTION	COUNTY	TOTAL SHEETS	SHEET NO.
74	172-71R-3	PEORIA	1360	1730
STA. 145+390 TO STA. 145+730				
FED. ROAD DIST. NO.		ILLINOIS FED. AID PROJECT		

TRAFFIC CONTROL		
HIGHWAY STANDARD		701400
HIGHWAY STANDARD		701401
HIGHWAY STANDARD		701406
HIGHWAY STANDARD		701411
HIGHWAY STANDARD		701426
HIGHWAY STANDARD		701446
HIGHWAY STANDARD		702001
HIGHWAY STANDARD		704001
PROJECT STANDARD		701403-174
PROJECT STANDARD		701411-174



PROJECT STANDARD 701411-174 SHALL BE USED TO CLOSE RAMP C-3 AND RAMP C-4. IN ADDITION TYPE III BARRICADES, PER PROJECT STANDARD 701411-174, SHALL BE INSTALLED AT THE TOP OF RAMP C-3.

REMOVE & DISPOSE OF TEMP. CONC. BARRIER, STATE OWNED, RAMP C-3 RT. STA. 10+472.265 TO STA. 10+575.000

MATCH LINE STA. 145+390 (W.B. I-74)

MATCH LINE STA. 145+730 (W.B. I-74)

STA. 10+20 (RAMP C-2) MATCH LINE

MATCH LINE STA. 10+370 (RAMP C-3)

PAVEMENT MARKING LEGEND	
(1X)	100 (4) SOLID
(2X)	150 (6) SOLID
(3X)	200 (8) SOLID
(4X)	300 (12) SOLID
(5X)	600 (24) SOLID
(6X)	100 (4) DOUBLE SOLID
(7X)	100 (4) SKIP DASH
(8X)	150 (6) SKIP DASH
(9X)	200 (8) SKIP DASH
(10X)	200 (8) DOTTED
(11X)	LETTERS AND ARROWS

RAISED REFLECTIVE PAVEMENT MARKERS	
1	ONE-WAY CRYSTAL MARKER AT 24.38 m(80') CENTERS
2	ONE-WAY CRYSTAL MARKER AT 12.19 m(40') CENTERS
3	ONE-WAY CRYSTAL MARKER AT 6.10 m(20') CENTERS
4	ONE-WAY AMBER MARKER AT 12.19 m(40') CENTERS
5	TWO-WAY AMBER MARKER AT 12.19 m(40') CENTERS FOR SPEEDS LESS THAN 45 MPH
6	TWO-WAY AMBER MARKER AT 24.38 m(80') CENTERS FOR SPEEDS GREATER THAN 45 MPH

WHERE "X" DESIGNATES:  
 E = EPOXY  
 P = PAINT  
 T = THERMOPLASTIC  
 U = POLYUREA  
 TP= TEMPORARY PAVEMENT MARKING  
 T3= PAVEMENT MARKING TAPE, TYPE III  
 W3= WET TEMPORARY PAVEMENT MARKING TAPE, TYPE III  
 All dimensions are in millimeters (inches) unless otherwise shown.

NOTES:  
 1. ALL REQUIRED PAVEMENT MARKINGS MUST BE IN PLACE PRIOR TO SHIFTING TRAFFIC.

- (1T3) 100 mm SOLID, PAVEMENT MARKING TAPE, TYPE III (WHITE)  
 WB RT. STA. 145+390.000 TO STA. 145+730.000  
 WB RT. STA. 145+390.000 TO STA. 145+560.054
- (1T3) 100 mm SOLID, PAVEMENT MARKING TAPE, TYPE III (YELLOW)  
 WB RT. STA. 145+390.000 TO STA. 145+730.000  
 WB RT. STA. 145+390.000 TO STA. 145+730.000
- (8T3) 150 mm SKIP DASH, PAVEMENT MARKING TAPE, TYPE III (WHITE)  
 WB RT. STA. 145+390.000 TO STA. 145+730.000  
 WB RT. STA. 145+390.000 TO STA. 145+730.000
- (10T3) 200 mm DOTTED, PAVEMENT MARKING TAPE, TYPE III (WHITE)  
 WB RT. STA. 145+560.054 TO STA. 145+730.000

MAINTENANCE OF TRAFFIC LEGEND			
	WORK ZONE		EX TEMPORARY CONCRETE BARRIER
	TRAFFIC FLOW DIRECTION		PR TEMPORARY CONCRETE BARRIER
	LANE(S) CLOSED		VERTICAL PANEL
	ARROW BOARD		BARRICADE TYPE I OR TYPE II OR DRUM
	DRUM WITH STEADY BURNING MONODIRECTIONAL LIGHT		SIGN
	TYPE III BARRICADE WITH FLASHING LIGHT		CONSTRUCTION SPEED LIMIT SIGN
	TYPE III BARRICADE		FLAGGER WITH TRAFFIC CONTROL SIGN
			BARRICADE OR DRUM WITH STEADY BURNING MONODIRECTIONAL LIGHT
			BARRICADE OR DRUM WITH FLASHING LIGHT

REVISIONS	
NAME	DATE

ILLINOIS DEPARTMENT OF TRANSPORTATION  
 MAINTENANCE OF TRAFFIC  
 STAGE 3-1  
 WB STA. 145+390 - STA. 145+730  
 DATE 11/23/04  
 DRAWN BY ROY  
 CHECKED BY LSA

