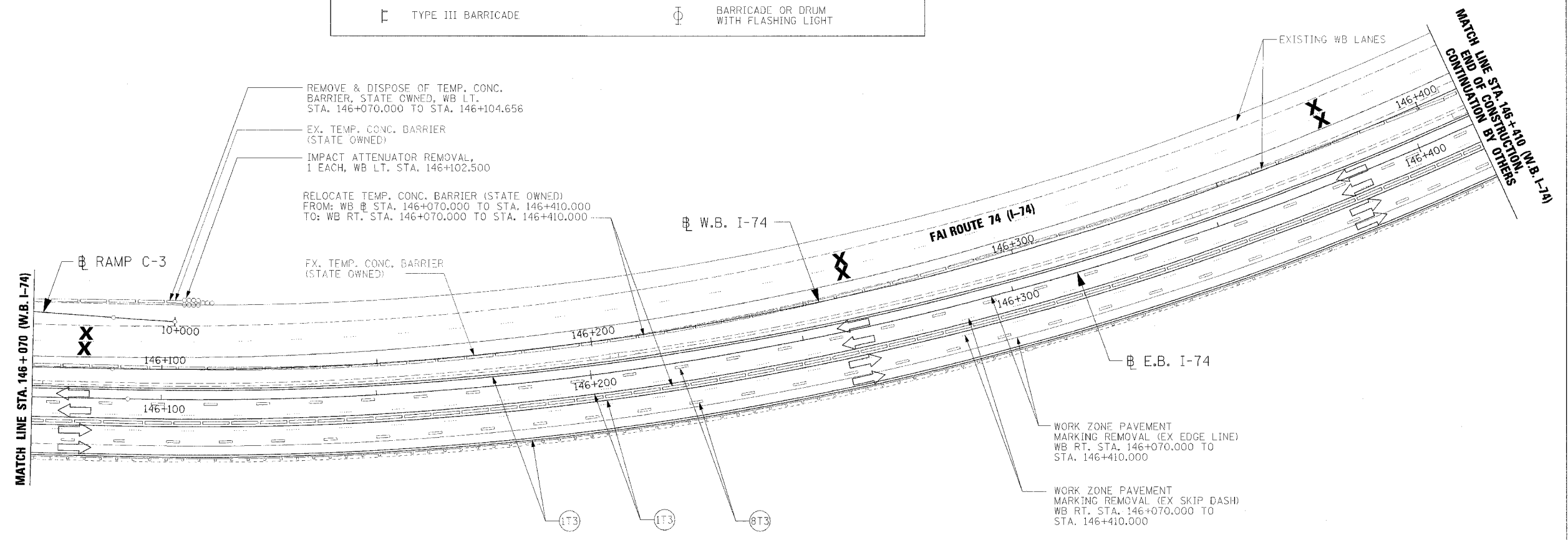
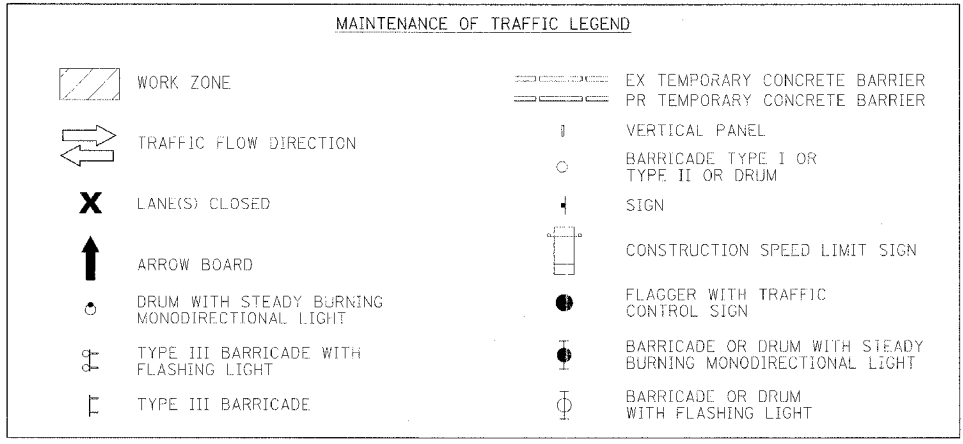


F.A.I. RTE.	SECTION	COUNTY	TOTAL SHEETS	SHEET NO.
74	(72-7)R-3	PEORIA	736	732
STA. 146+070		TO STA. 146+410		
FED. ROAD DIST. NO.		ILLINOIS	FED. AID PROJECT	

TRAFFIC CONTROL		
HIGHWAY STANDARD	701400	
HIGHWAY STANDARD	701401	
HIGHWAY STANDARD	701406	
HIGHWAY STANDARD	701411	
HIGHWAY STANDARD	701426	
HIGHWAY STANDARD	701446	
HIGHWAY STANDARD	702001	
HIGHWAY STANDARD	704001	
PROJECT STANDARD	701403-174	
PROJECT STANDARD	701411-174	

NOTES:
1. ALL REQUIRED PAVEMENT MARKINGS MUST BE IN PLACE PRIOR TO SHIFTING TRAFFIC.



- (1T3) 100 mm SOLID, PAVEMENT MARKING TAPE, TYPE III (WHITE)
WB RT. STA. 146+070.000 TO STA. 146+410.000
WB RT. STA. 146+070.000 TO STA. 146+410.000
- (1T3) 100 mm SOLID, PAVEMENT MARKING TAPE, TYPE III (YELLOW)
WB RT. STA. 146+070.000 TO STA. 146+410.000
WB RT. STA. 146+070.000 TO STA. 146+410.000
- (8T3) 150 mm SKIP DASH, PAVEMENT MARKING TAPE, TYPE III (WHITE)
WB RT. STA. 146+070.000 TO STA. 146+410.000
WB RT. STA. 146+070.000 TO STA. 146+410.000

PAVEMENT MARKING LEGEND

- (1X) 100 (4) SOLID
- (2X) 150 (6) SOLID
- (3X) 200 (8) SOLID
- (4X) 300 (12) SOLID
- (5X) 600 (24) SOLID
- (6X) 100 (4) DOUBLE SOLID
- (7X) 100 (4) SKIP DASH
- (8X) 150 (6) SKIP DASH
- (9X) 200 (8) SKIP DASH
- (10X) 200 (8) DOTTED
- (11X) LETTERS AND ARROWS

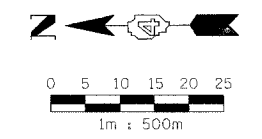
RAISED REFLECTIVE PAVEMENT MARKERS

- 1 ONE-WAY CRYSTAL MARKER AT 24.38 m(80') CENTERS
- 2 ONE-WAY CRYSTAL MARKER AT 12.19 m(40') CENTERS
- 3 ONE-WAY CRYSTAL MARKER AT 6.10 m(20') CENTERS
- 4 ONE-WAY AMBER MARKER AT 12.19 m(40') CENTERS
- 5 TWO-WAY AMBER MARKER AT 12.19 m(40') CENTERS FOR SPEEDS LESS THAN 45 MPH
- 6 TWO-WAY AMBER MARKER AT 24.38 m(80') CENTERS FOR SPEEDS GREATER THAN 45 MPH

WHERE "X" DESIGNATES:
E = EPOXY
P = PAINT
T = THERMOPLASTIC
U = POLYUREA

— WHITE
— YELLOW

TP= TEMPORARY PAVEMENT MARKING
T3= PAVEMENT MARKING TAPE, TYPE III
W3= WET TEMPORARY PAVEMENT MARKING TAPE, TYPE III
All dimensions are in millimeters (inches) unless otherwise shown.



REVISIONS	
NAME	DATE

ILLINOIS DEPARTMENT OF TRANSPORTATION

MAINTENANCE OF TRAFFIC
STAGE 3-1
WB STA. 146+070 - STA. 146+410



DATE 11/23/04
DRAWN BY RDY
CHECKED BY LSA