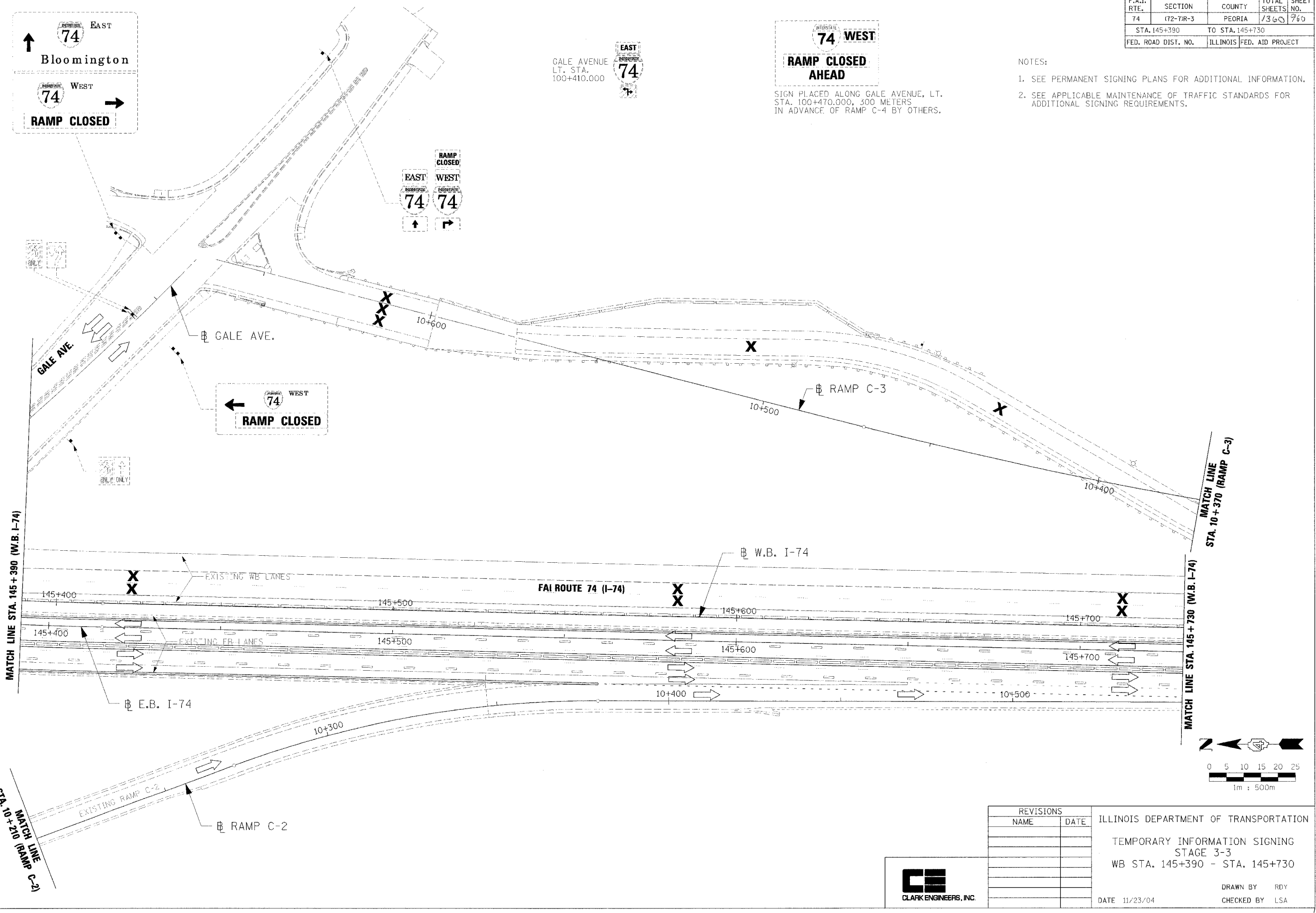


F.A.I. RTE.	SECTION	COUNTY	TOTAL SHEETS	SHEET NO.
74	(72-71R-3)	PEORIA	7360	760
STA. 145+390		TO STA. 145+730		
FED. ROAD DIST. NO.		ILLINOIS FED. AID PROJECT		

- NOTES:
1. SEE PERMANENT SIGNING PLANS FOR ADDITIONAL INFORMATION.
 2. SEE APPLICABLE MAINTENANCE OF TRAFFIC STANDARDS FOR ADDITIONAL SIGNING REQUIREMENTS.



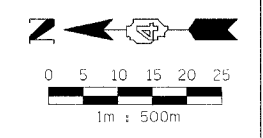
GALE AVENUE
LT. STA.
100+410.000

RAMP CLOSED AHEAD
SIGN PLACED ALONG GALE AVENUE, LT. STA. 100+470.000, 300 METERS IN ADVANCE OF RAMP C-4 BY OTHERS.

RAMP CLOSED
Bloomington
74 EAST
74 WEST

RAMP CLOSED
74 WEST

RAMP CLOSED
EAST WEST
74 74



REVISIONS		ILLINOIS DEPARTMENT OF TRANSPORTATION TEMPORARY INFORMATION SIGNING STAGE 3-3 WB STA. 145+390 - STA. 145+730
NAME	DATE	



DATE 11/23/04
DRAWN BY RBY
CHECKED BY LSA