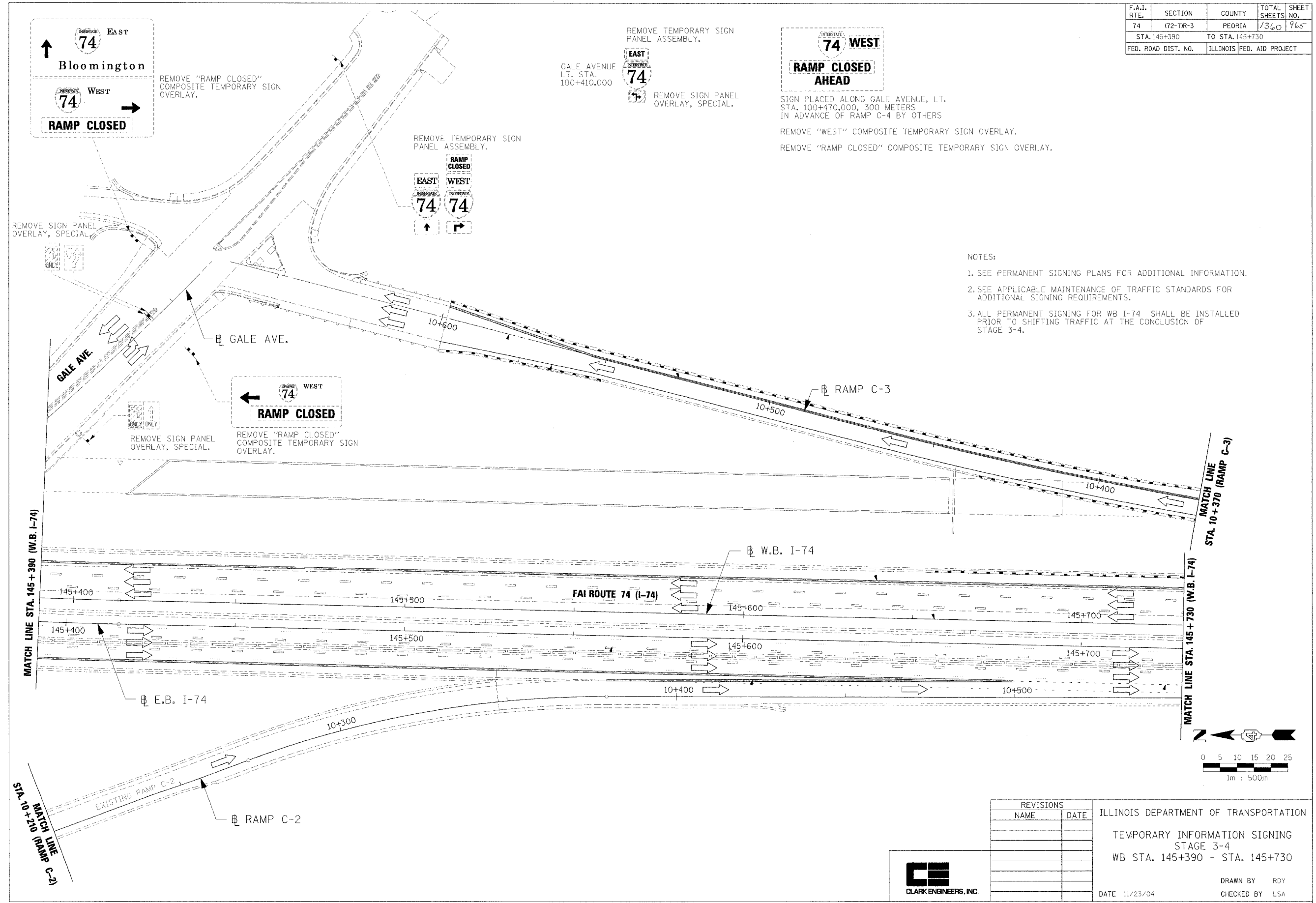


F.A.I. RTE.	SECTION	COUNTY	TOTAL SHEETS	SHEET NO.
74	(72-7)R-3	PEORIA	1360	965
STA. 145+390		TO STA. 145+730		
FED. ROAD DIST. NO.	ILLINOIS	FED. AID PROJECT		



- NOTES:
1. SEE PERMANENT SIGNING PLANS FOR ADDITIONAL INFORMATION.
 2. SEE APPLICABLE MAINTENANCE OF TRAFFIC STANDARDS FOR ADDITIONAL SIGNING REQUIREMENTS.
 3. ALL PERMANENT SIGNING FOR WB I-74 SHALL BE INSTALLED PRIOR TO SHIFTING TRAFFIC AT THE CONCLUSION OF STAGE 3-4.

REVISIONS	
NAME	DATE

ILLINOIS DEPARTMENT OF TRANSPORTATION
 TEMPORARY INFORMATION SIGNING
 STAGE 3-4
 WB STA. 145+390 - STA. 145+730

DATE 11/23/04

DRAWN BY RDY
 CHECKED BY LSA

