

EXISTING LIGHTING LEGEND

HIGH MAST LIGHTING

CONVENTIONAL POLE

JUNCTION BOX

CONTROLLER

POWER POLE

HANDHOLE

PROPOSED LIGHTING LEGEND

HIGH MAST LIGHTING

CONVENTIONAL POLE

JUNCTION BOX

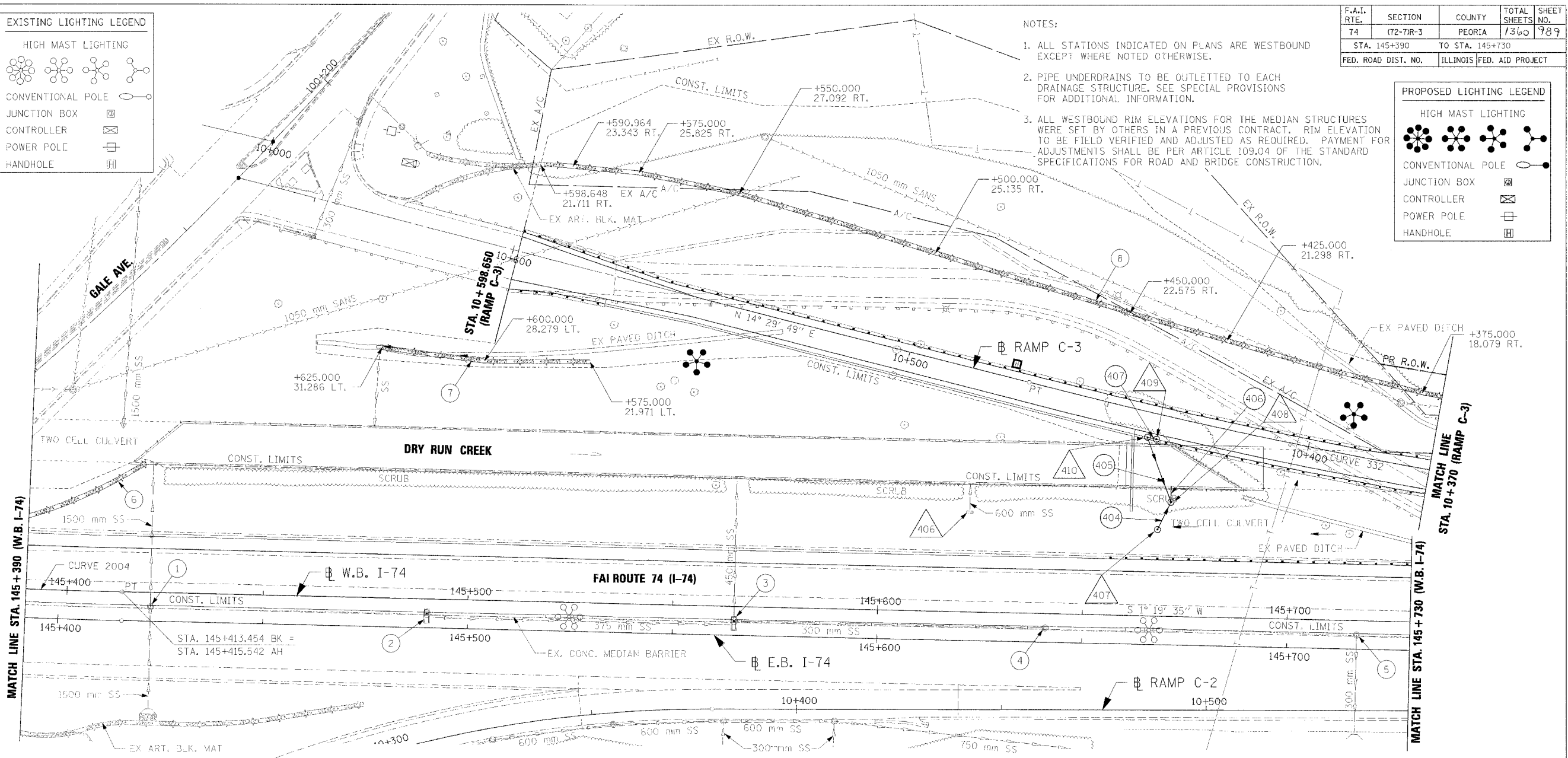
CONTROLLER

POWER POLE

HANDHOLE

F.A.I. RTE.	SECTION	COUNTY	TOTAL SHEETS	SHEET NO.
74	(72-7)R-3	PEORIA	1360	789
STA. 145+390		TO STA. 145+730		
FED. ROAD DIST. NO.		ILLINOIS FED. AID PROJECT		

- NOTES:**
1. ALL STATIONS INDICATED ON PLANS ARE WESTBOUND EXCEPT WHERE NOTED OTHERWISE.
 2. PIPE UNDERDRAINS TO BE OUTLETTED TO EACH DRAINAGE STRUCTURE. SEE SPECIAL PROVISIONS FOR ADDITIONAL INFORMATION.
 3. ALL WESTBOUND RIM ELEVATIONS FOR THE MEDIAN STRUCTURES WERE SET BY OTHERS IN A PREVIOUS CONTRACT. RIM ELEVATION TO BE FIELD VERIFIED AND ADJUSTED AS REQUIRED. PAYMENT FOR ADJUSTMENTS SHALL BE PER ARTICLE 109.04 OF THE STANDARD SPECIFICATIONS FOR ROAD AND BRIDGE CONSTRUCTION.



DRAINAGE LEGEND

EXISTING	PROPOSED	DESCRIPTION
○	●	CATCH BASIN
○	○	INLET
○	○	MANHOLE
—	—	SAG
—	—	SUMMIT
—	—	DITCH
—	—	SWALE
—	—	CULVERT END SECTION
—	—	HEADWALL
—	—	PIPE UNDERDRAIN
—	—	SANITARY SEWER
—	—	STORM SEWER
—	—	COMBINATION SEWER
—	—	PAVED DITCH
—	—	ARTICULATED BLOCK MAT
—	—	CULVERT LINE
①	①	STRUCTURE NUMBER
①	①	PIPE NUMBER

STRUCTURE SCHEDULE

STR NO.	STATION	OFFSET	TYPE	F&G	EB RIM EL.	WB RIM EL.	INV. N	INV. S	INV. E	INV. W	REMARKS
406	145+621.984	24.542 m LT	MAN RECON NEW T1 F&G	T1F OL		169.908					
407	145+667.869	21.239 m LT	MAN A 1.2D	MI 604101		169.406			168.020		
408	145+671.000	28.000 m LT	MAN A 1.2D	T1F CL		170.924	169.921		165.767	167.964	
409	C3 10+436.580	6.100 m LT	DR STR T1A	T20 F&G		174.573	172.794				
410	C3 10+438.800	6.100 m LT	DR STR T1A, SPECIAL	T20 F&G		174.657		172.744		171.202	

PIPE SCHEDULE

PIPE NO.	L/S - D/S	LENGTH (m)	SIZE (mm)	CLASS/TYPE	U/S INV	D/S INV	SLOPE	T.B. SPL (cu. m)	REMARKS
404	407 - 408	6.5	300	SS CL A 2	168.020	167.964	0.862%		
405	410 - 408	15.5	300	SS CL A 3	171.202	169.921	8.265%	4.118	
406	408 - 145+670.992, 31.906 m LT	3.5	600	SS CL A 5	165.767	165.750	0.486%		SEE STRUCTURE PLANS FOR CULVERT PENETRATION DETAIL
407	409 - 410	1.0	300	SS CL A 2	172.794	172.744	5.000%	0.233	

- 1 DRAINAGE STRUCTURE REPAIR, WB STA. 145+422,500, 3,500 m RT.
- 2 DRAINAGE STRUCTURE REPAIR, WB STA. 145+490,000, 3,500 m RT.
- 3 DRAINAGE STRUCTURE REPAIR, WB STA. 145+565,000, 3,500 m RT.
- 4 DRAINAGE STRUCTURE REPAIR, WB STA. 145+641,000, 3,500 m RT.
- 5 DRAINAGE STRUCTURE REPAIR, WB STA. 145+717,000, 3,500 m RT.
- 6 ART. BLK. MAT, WB LT. STA. 145+390,000 TO STA. 145+420,800, LENGTH = 31.613 m
- 7 ART. BLK. MAT, RAMP C-3 LT. STA. 10+575,000 TO STA. 10+625,000, LENGTH = 50.964 m
- 8 ART. BLK. MAT, RAMP C-3 RT. STA. 10+370,000 TO STA. 10+598,648, LENGTH = 227.690 m

REVISIONS

NAME	DATE

ILLINOIS DEPARTMENT OF TRANSPORTATION
 PROPOSED DRAINAGE & UTILITIES PLAN
 FAI ROUTE 74 (I-74)
 WB STA. 145+390 - STA. 145+730

DATE 11/23/04

DRAWN BY CAM
 CHECKED BY KSD

