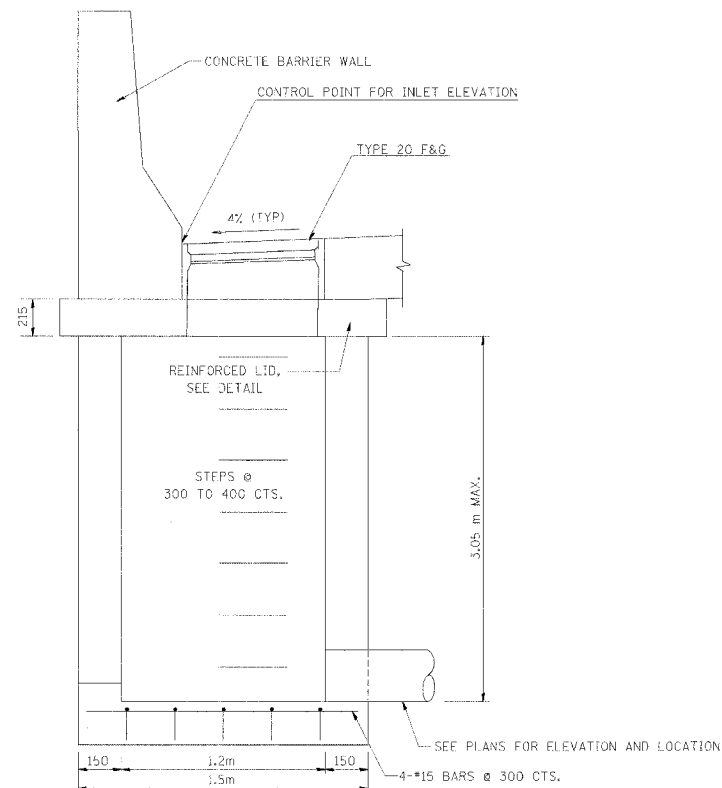
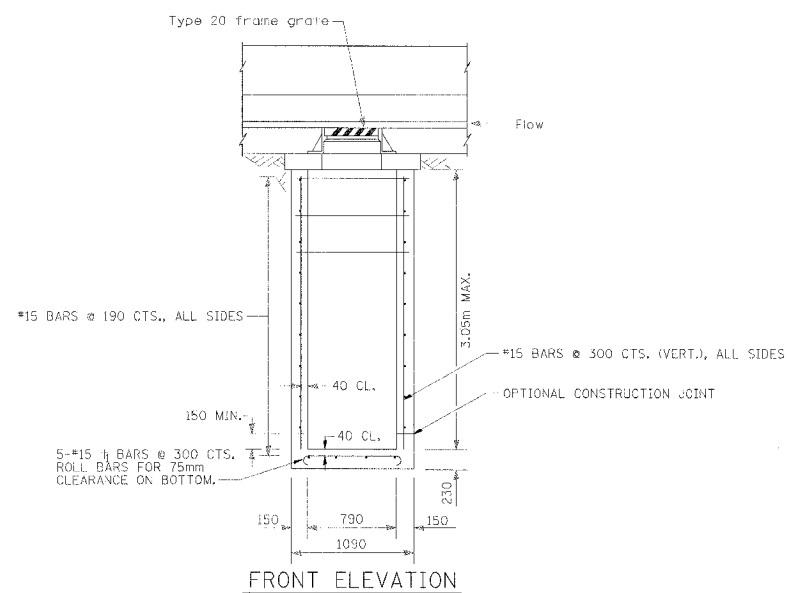
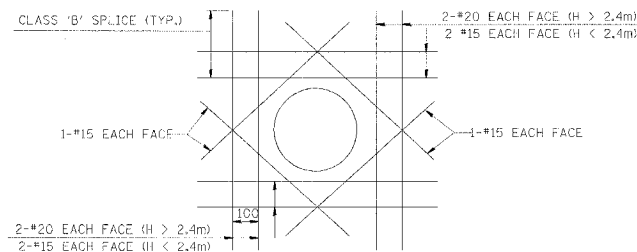
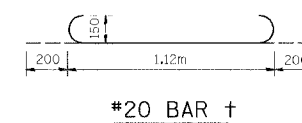
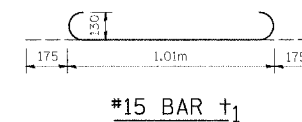
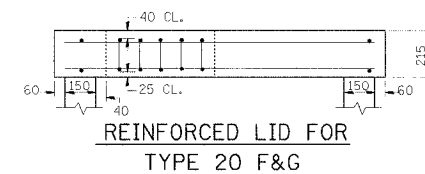
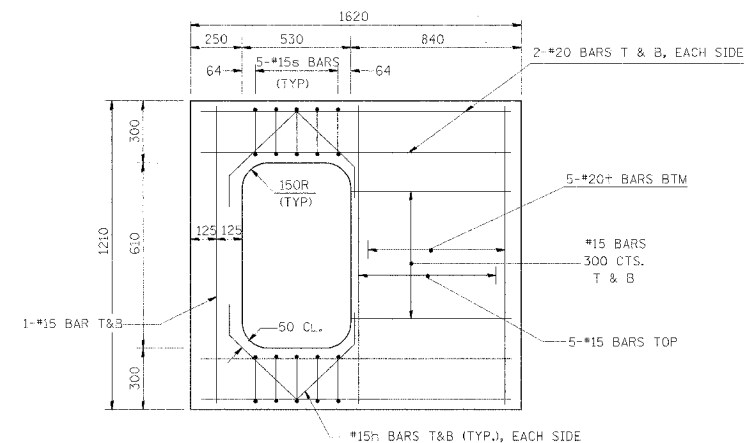


F.A.I. RTE.	SECTION	COUNTY	TOTAL SHEETS	SHEET NO.
74	(72-7)R-3	PEORIA	1360	1003
STA.	TO STA.			
FED. ROAD DIST. NO.	ILLINOIS	FED. AID PROJECT		

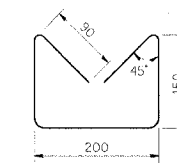
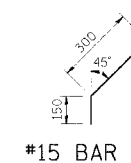


DRAINAGE STRUCTURE WITH TYPE 20 F&G
SIDE ELEVATION



TYPICAL REINFORCEMENT DETAIL AROUND SIDEWALL OPENINGS
(OPENING > 300)

WHERE CLASS 'B' SPLICE LENGTH ANCHORAGE IS NOT POSSIBLE, BARS SHOULD BE HOOKED.



BAR DETAILS

NOTES:

1. ALL DIMENSIONS ARE IN mm UNLESS NOTED OTHERWISE.
2. SEE STANDARD 602701 FOR DETAILS OF STEPS
3. EXPOSED EDGES SHALL BE BEVELED 19mm
4. DETAILS NOT TO SCALE



REVISIONS	
NAME	DATE

ILLINOIS DEPARTMENT OF TRANSPORTATION

DRAINAGE DETAILS
DRAINAGE STRUCTURE,
TYPE 1A, SPECIAL

DATE 11/23/04

DRAWN BY CAM
CHECKED BY RBY