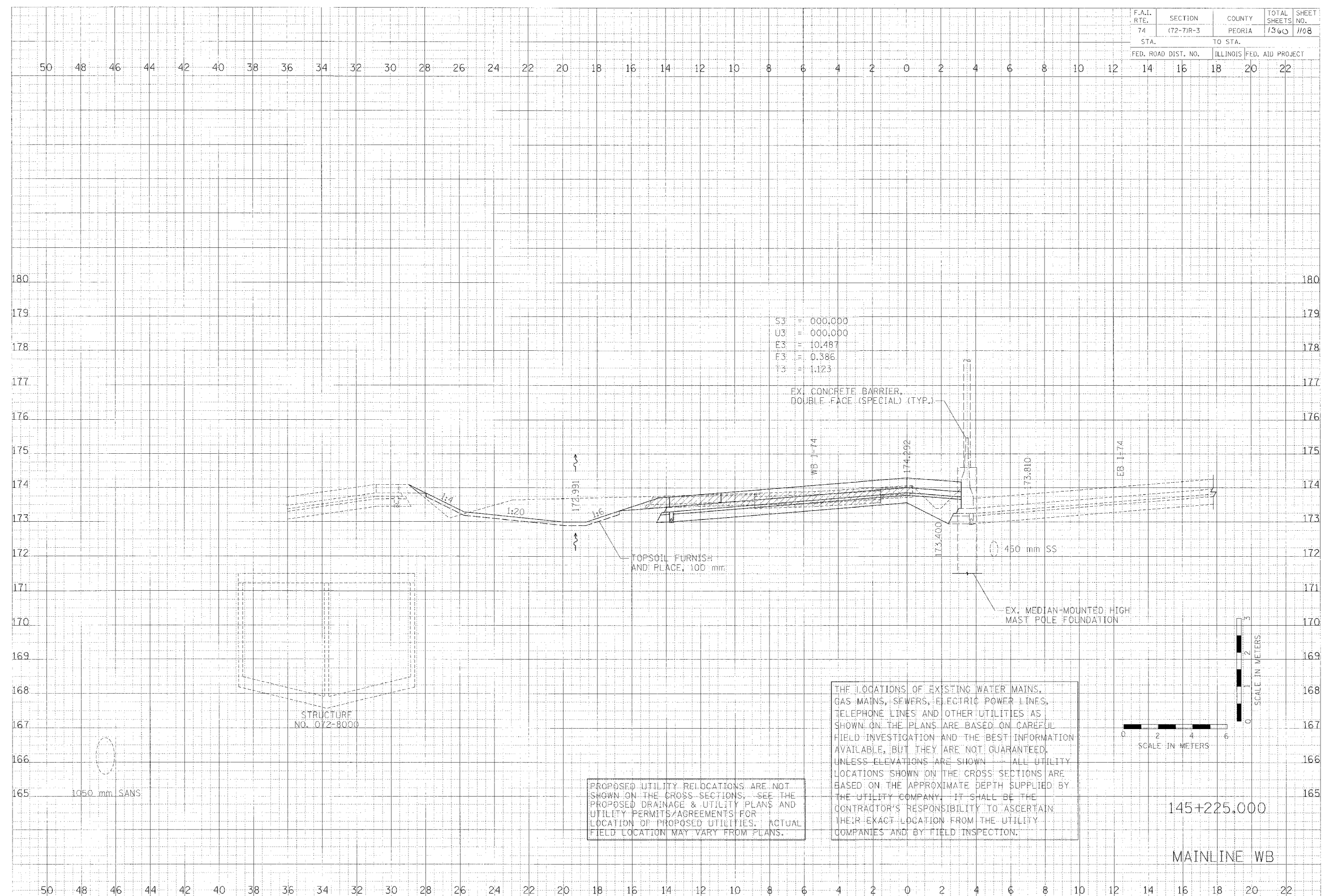


| | | | | |
|---------------------|-----------|---------------------------|--------------|-----------|
| F.A.I. RTE. | SECTION | COUNTY | TOTAL SHEETS | SHEET NO. |
| 74 | (72-7)R-3 | PEORIA | 1360 | 1108 |
| STA. | | TO STA. | | |
| FED. ROAD DIST. NO. | | ILLINOIS FED. AID PROJECT | | |

| | | |
|------|----|----------|
| DATE | BY | REVISION |
| | | |
| | | |

CLARK ENGINEERS, INC.

| | | |
|------|----|----------|
| DATE | BY | REVISION |
| | | |
| | | |



S3 = 000,000
 U3 = 000,000
 E3 = 10,487
 F3 = 0,386
 T3 = 1,123

EX. CONCRETE BARRIER,
 DOUBLE FACE (SPECIAL) (TYP.)

WB J=74

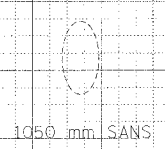
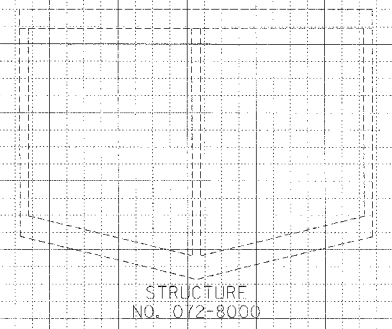
174,292

173,810

EB J=74

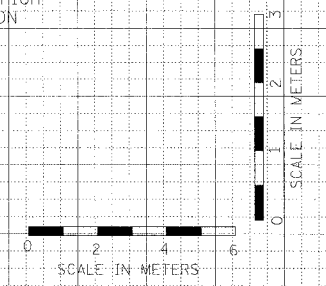
TOPSOIL FURNISH
 AND PLACE, 100 mm.

EX. MEDIAN-MOUNTED HIGH
 MAST POLE FOUNDATION



THE LOCATIONS OF EXISTING WATER MAINS, GAS MAINS, SEWERS, ELECTRIC POWER LINES, TELEPHONE LINES AND OTHER UTILITIES AS SHOWN ON THE PLANS ARE BASED ON CAREFUL FIELD INVESTIGATION AND THE BEST INFORMATION AVAILABLE, BUT THEY ARE NOT GUARANTEED. UNLESS ELEVATIONS ARE SHOWN ALL UTILITY LOCATIONS SHOWN ON THE CROSS SECTIONS ARE BASED ON THE APPROXIMATE DEPTH SUPPLIED BY THE UTILITY COMPANY. IT SHALL BE THE CONTRACTOR'S RESPONSIBILITY TO ASCERTAIN THEIR EXACT LOCATION FROM THE UTILITY COMPANIES AND BY FIELD INSPECTION.

PROPOSED UTILITY RELOCATIONS ARE NOT SHOWN ON THE CROSS SECTIONS. SEE THE PROPOSED DRAINAGE & UTILITY PLANS AND UTILITY PERMITS/AGREEMENTS FOR LOCATION OF PROPOSED UTILITIES. ACTUAL FIELD LOCATION MAY VARY FROM PLANS.



145+225.000

MAINLINE WB