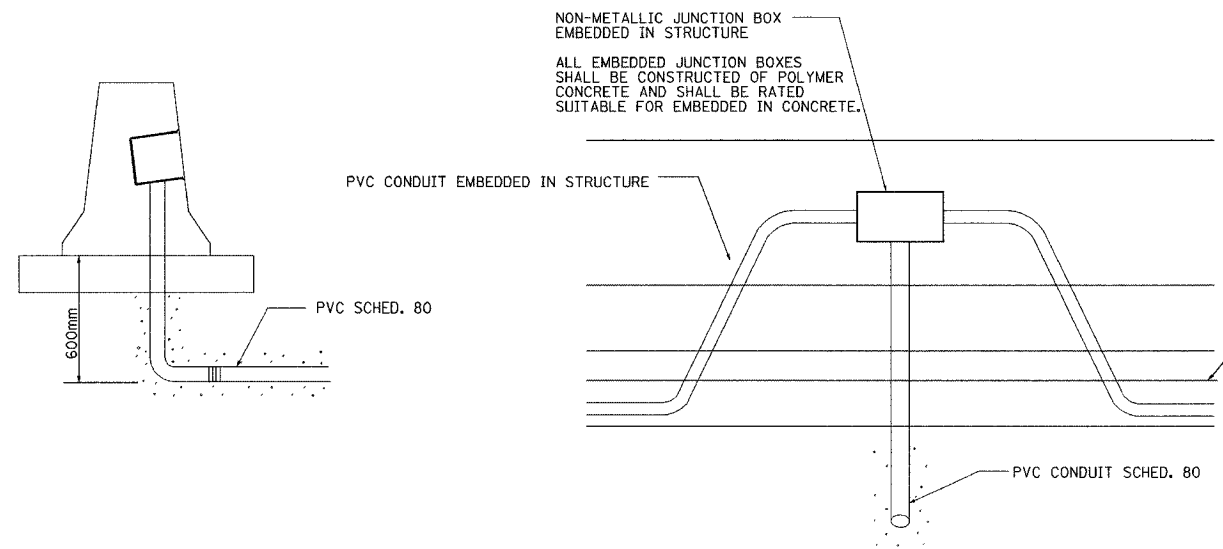
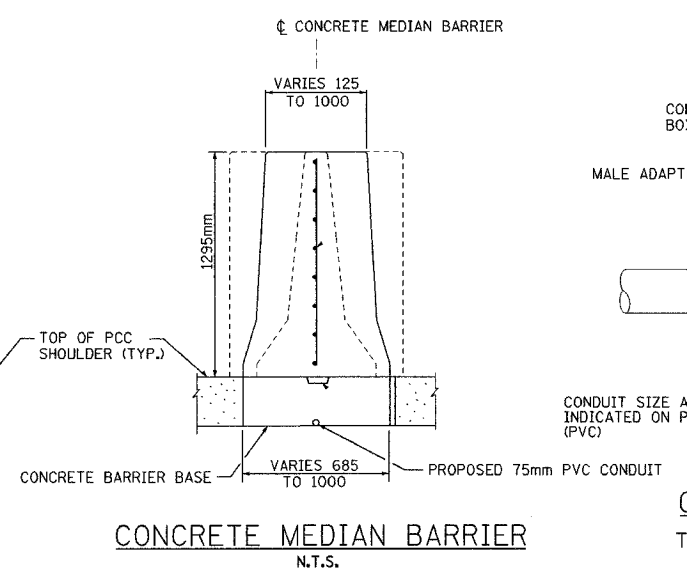


F.A.I. RTE.	SECTION	COUNTY	TOTAL SHEETS	SHEET NO.
74	(72-71R-3)	PEORIA	1366	1327
STA.		TO STA.		
FED. ROAD DIST. NO.		ILLINOIS FED. AID PROJECT		

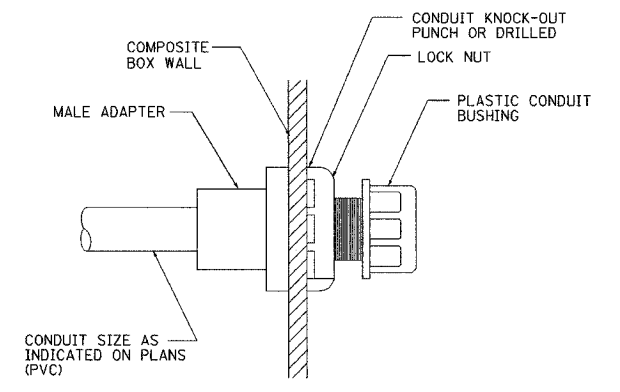
CONTRACT NO. 68200



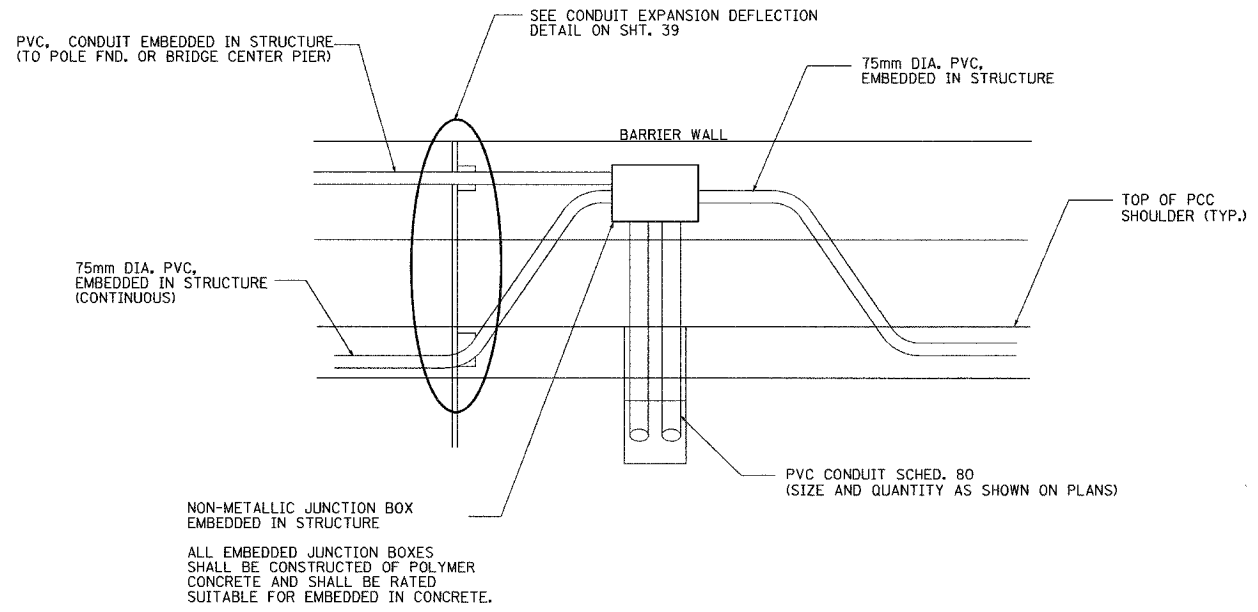
JUNCTION BOX EMBEDDED IN BARRIER WALL - DETAIL 1
N.T.S.



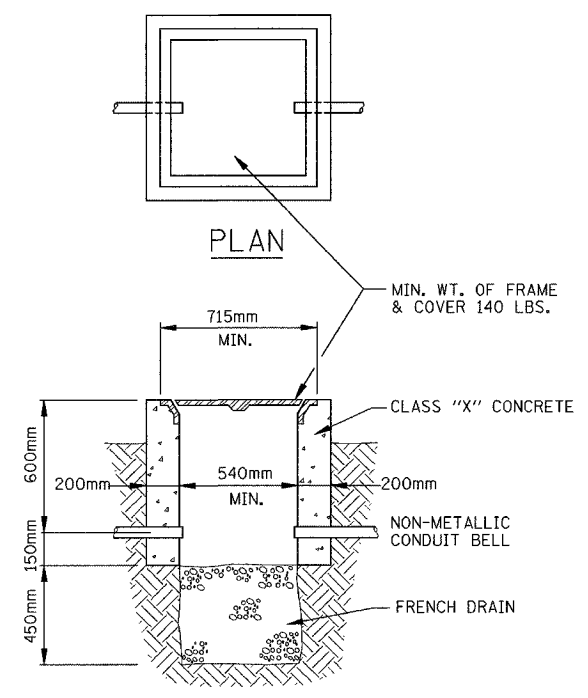
CONCRETE MEDIAN BARRIER
N.T.S.



CONDUIT BOX ENTRY
TYPICAL ALL BARRIER BOXES
N.T.S.



BARRIER WALL JUNCTION BOX -DETAIL 2
N.T.S.



SECTION
CONCRETE HANDHOLE

LIGHTING SHEET 43 OF 64

REVISIONS	
NAME	DATE

ILLINOIS DEPARTMENT OF TRANSPORTATION

MISCELLANEOUS LIGHTING DETAILS

DRAWN BY JSS/MMK
CHECKED BY MKR
DATE: 11/12/04

ab **alfred benesch & company**
CONSULTING ENGINEERS
205 NORTH MICHIGAN AVENUE, CHICAGO, ILLINOIS 60601

m:\proj\3573\lighting\4-contract\01\1000\hndel3.dgn

4:3:16 PM

11/12/2004