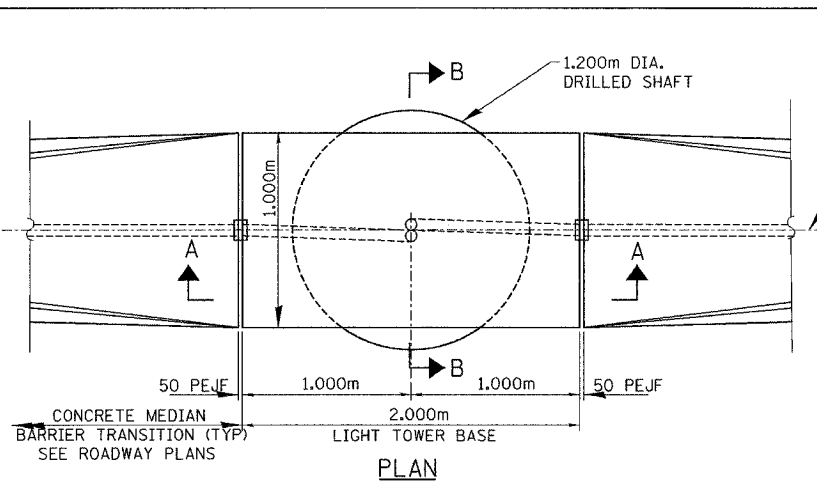


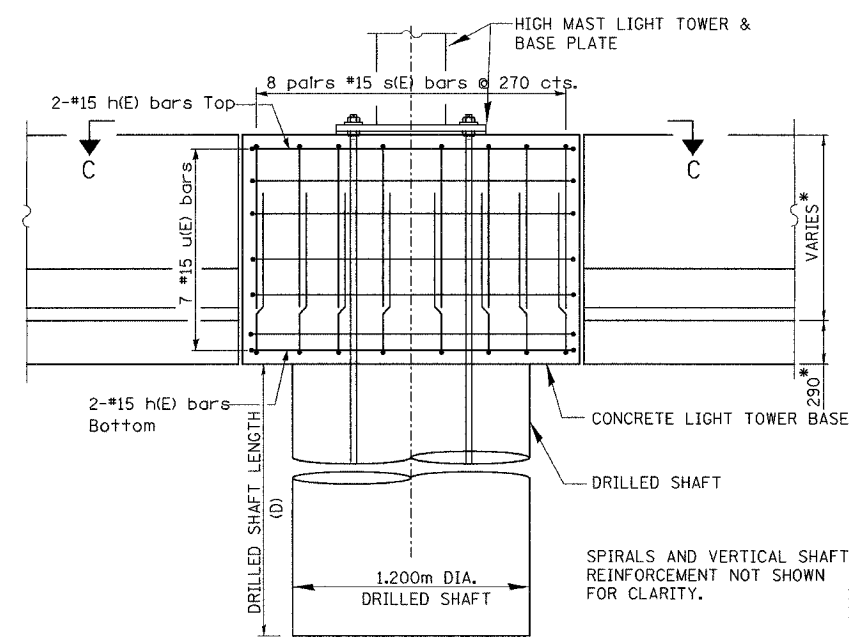
F.A.I. RTE.	SECTION	COUNTY	TOTAL SHEETS	SHEET NO.
74	(72-7)R-3	PEORIA	1360	1233
STA.		TO STA.		
FED. ROAD DIST. NO.		ILLINOIS FED. AID PROJECT		

CONTRACT NO. 68200

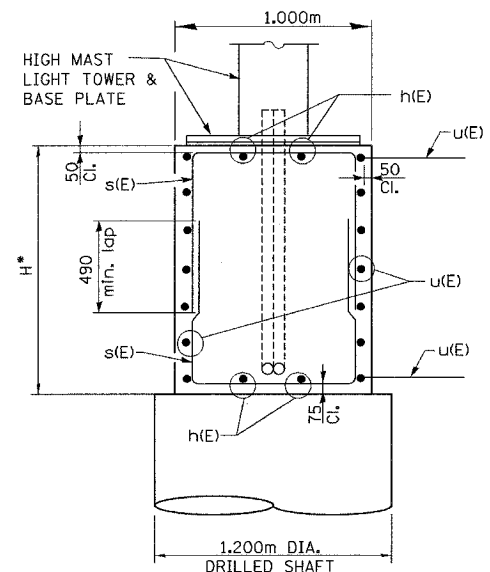
sp2(E)-#10 SPIRAL, 230 PITCH, 850 O.D.
3 LOOPS AT TOP & BOTTOM
AT 50 CTS.



PLAN

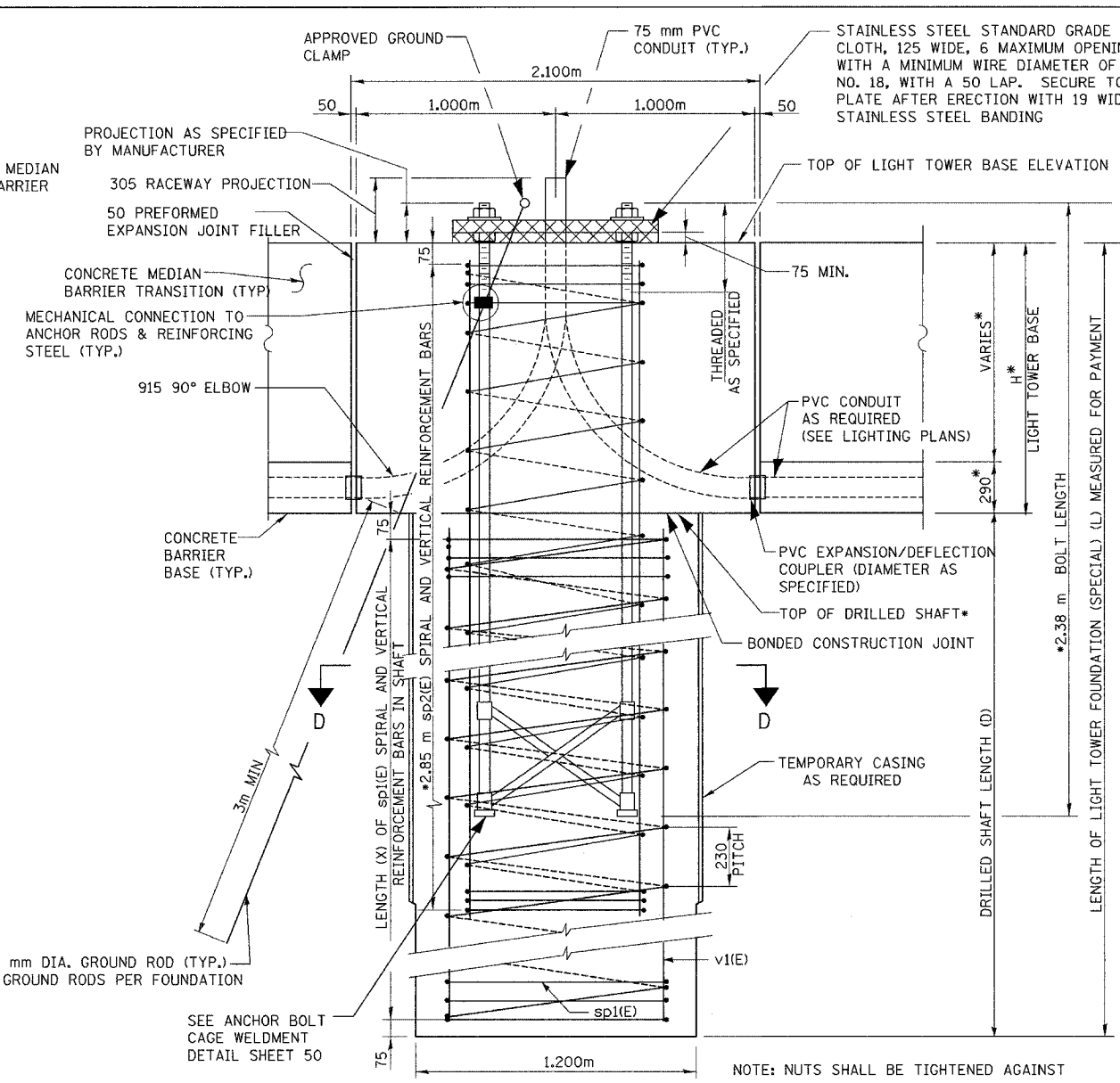


ELEVATION



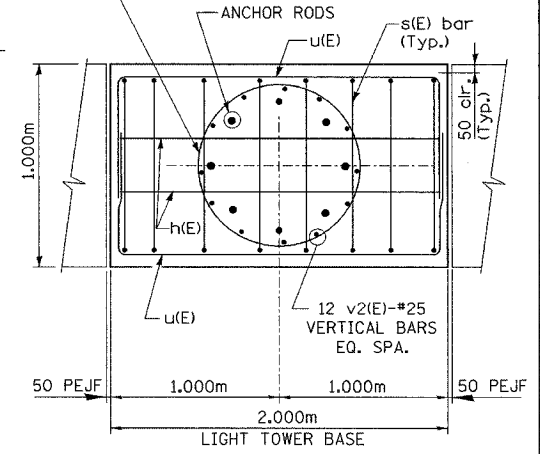
SECTION B-B

SPIRALS AND VERTICAL SHAFT REINFORCEMENT NOT SHOWN FOR CLARITY.

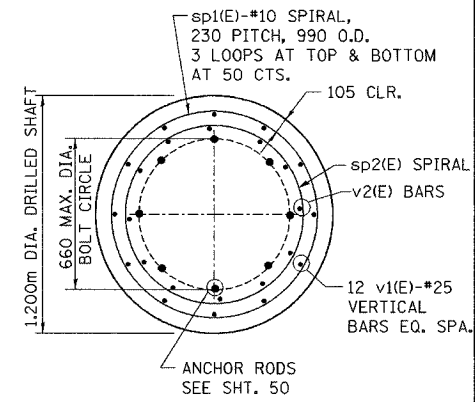


SECTION A-A

NOTE: NUTS SHALL BE TIGHTENED AGAINST THE BASE PLATE WITH 271 Nm MINIMUM TORQUE.



SECTION C-C
(For clarity base plate and PVC conduit are not shown.)



SECTION D-D

NOTES:

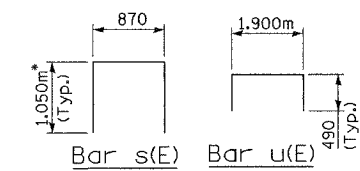
1. DIMENSIONS AND TOP OF DRILLED SHAFT ELEVATION ARE BASED ON AN ASSUMED SHOULDER SLAB THICKNESS OF 290mm AND THE HEIGHT OF THE TALLER SIDE OF THE MEDIAN BARRIER. IF ACTUAL SHOULDER THICKNESS OR BARRIER HEIGHT DIFFERS, DIMENSIONS SHOULD BE ADJUSTED AS NEEDED. SEE HEIGHT H IN TABLE.
2. THE COST OF THE CONCRETE BARRIER BASE, 50mm PREFORMED EXPANSION JOINT FILLER, MEDIAN BARRIER TRANSITION AND THE WELDED WIRE FABRIC REINFORCEMENT FOR THE BARRIER TRANSITION IS INCLUDED IN THE COST OF CONCRETE BARRIER OF THE TYPE SPECIFIED.
3. EXTEND REINFORCING FROM LIGHT TOWER BASE INTO DRILLED SHAFT. REINFORCING BARS AND SPACING SHALL BE AS SHOWN.
4. SEE FOUNDATION NOTES SHEET 52.
5. THE COST OF THE GROUND RODS AND GROUND ROD CLAMPS SHALL BE INCLUDED IN THE LIGHT TOWER FOUNDATION (SPECIAL) PAY ITEM. THREE GROUND RODS ARE REQUIRED AT EACH FOUNDATION.
6. PEJF - PREFORMED EXPANSION JOINT FILLER
7. COST OF LIGHT TOWER BASE (CONCRETE, EPOXY COATED REINFORCEMENT BARS, ANCHOR ROD ASSEMBLY, GROUND ROD, CONDUIT) IS INCLUDED WITH LIGHT TOWER FOUNDATION (SPECIAL).
8. ALL DIMENSIONS IN MILLIMETERS UNLESS NOTED OTHERWISE.
9. ALL REBAR DIMENSIONS ARE OUT-TO-OUT.

HIGH MAST TOWER LOCATION			LIGHT TOWER FOUNDATION (SPECIAL) (TYPE 1 Median)						
POLE ID	STATION	BASE LINE	TOP OF LIGHT TOWER BASE ELEV.	TOP OF DRILLED SHAFT ELEVATION	HEIGHT (H) OF LIGHT TOWER BASE	DRILLED SHAFT LENGTH (D) (METERS)	LIGHT TOWER FDN. (SPECIAL) LENGTH (L) (METERS)	BORING LOG	LENGTH (X) OF SHAFT REINFORCEMENT (METERS)
4 SAB L-04	142+388.1	I-74 E.B.	205.391	203.797	1.594m	4.600	6.194	HMSB 2	4.45
6 SAB L-03	142+487.2	I-74 E.B.	204.848	203.259	1.589m	4.600	6.189	HMSB 3	4.45

BAR LIST - EACH FOUNDATION

Bar	No.	Size	Length (mm)	Shape
h(E)	4	15	1900	□
s(E)	16	15	2970	□
u(E)	14	15	2880	□
v1(E)	12	25	**	□
v2(E)	12	25	3490	□
sp1(E)	1	10	**	~
sp2(E)	1	10	46780	~

** SEE SECTION A-A AND D-D



alfred benesch & company
CONSULTING ENGINEERS
205 NORTH MICHIGAN AVENUE, CHICAGO, ILLINOIS 60601

REVISIONS	
NAME	DATE

ILLINOIS DEPARTMENT OF TRANSPORTATION
LIGHT TOWER FOUNDATION (SPECIAL)
(TYPE 1 MEDIAN)
DRAWN BY CDF
CHECKED BY RJW
DATE: 11/12/04

m:\proj\3573\lighting\74contract\0\111000-7a_hmf.dwg

4/12/04 PM

11/12/2004