


F.A.I. RTE.	SECTION	COUNTY	TOTAL SHEETS	SHEET NO.
74	(72-71R-3)	PEORIA	1360	1271
STA. 143+000.000		TO STA. 143+300.000		
FED. ROAD DIST. NO.	ILLINOIS	FED. AID PROJECT		
CONTRACT NO. 68200				

1-23

EXITS 87A-B



**Indianapolis
Chillicothe
2 MILES**

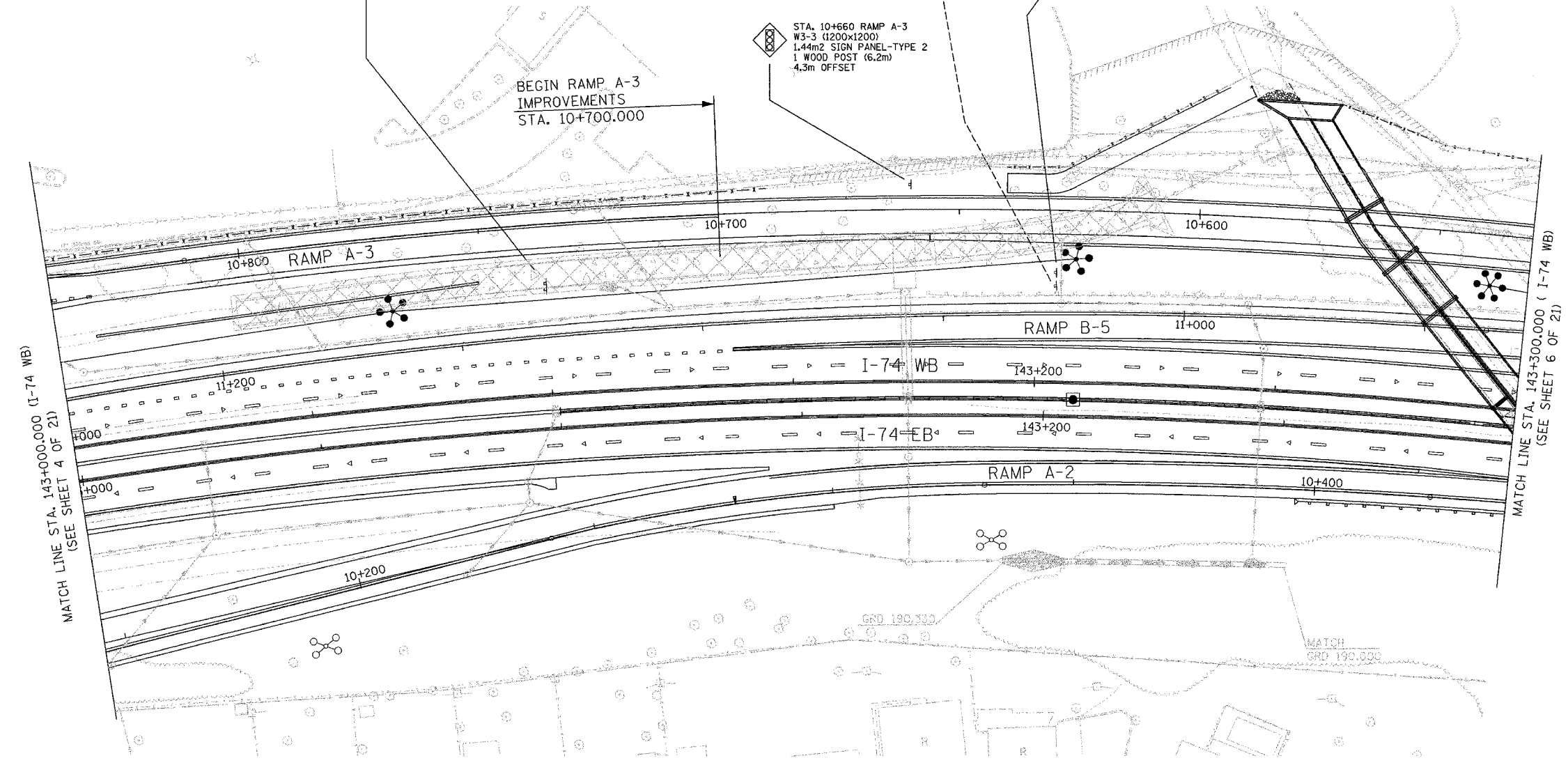
STA. 143+100 I-74 WB
INSTALL GROUND MOUNTED
SIGN PANEL, SUPPORTS AND
FOUNDATIONS
PANEL SIZE (4650x4420)
6.8m OFFSET

REMOVE SIGN PANEL-
TYPE A ASSEMBLY

STA. 11+025 RAMP B-5
D10-5 (300x900)
0.27m² SIGN PANEL-TYPE 1
1 METAL POST-TYPE A (4.1m)
5.5m OFFSET

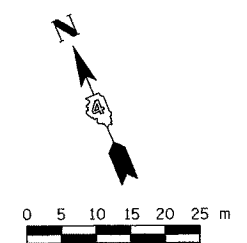
STA. 10+660 RAMP A-3
W3-3 (1200x1200)
1.44m² SIGN PANEL-TYPE 2
1 WOOD POST (6.2m)
4.3m OFFSET

BEGIN RAMP A-3
IMPROVEMENTS
STA. 10+700.000



MATCH LINE STA. 143+000.000 (I-74 WB)
(SEE SHEET 4 OF 21)

MATCH LINE STA. 143+300.000 (I-74 WB)
(SEE SHEET 6 OF 21)



- LEGEND**
- (A) CITY OWNED SIGNS TO BE RETAINED
 - (B) CITY OWNED SIGNS TO BE REMOVED
 - (C) CITY OWNED SIGNS TO BE RELOCATED
 - * BY OTHERS
 - (3-88) NON-STANDARD SIGN NUMBER

REVISIONS	
NAME	DATE

ILLINOIS DEPARTMENT OF TRANSPORTATION

SIGNING PLAN
F.A.I. ROUTE 74
STA. 143+000 TO STA. 143+300
(SHEET 5 OF 21)

SCALE 1:500
DATE 11/15/2004

DRAWN BY MEG
CHECKED BY BCG

11/15/2004 11:52:04 am shenahd/contract 10ep105_7b.dgn
 11/15/2004

