

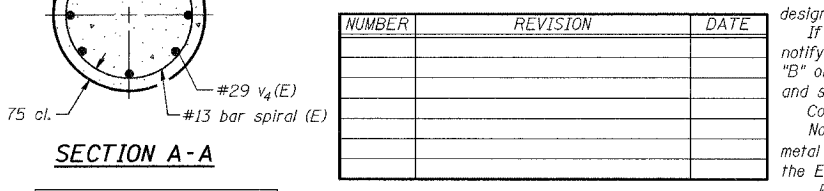
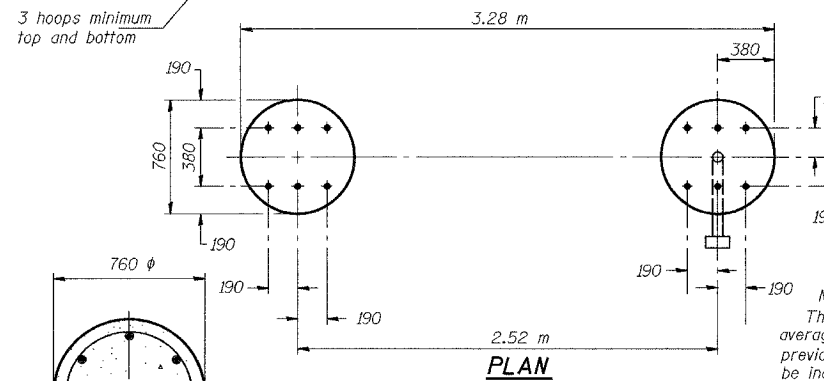
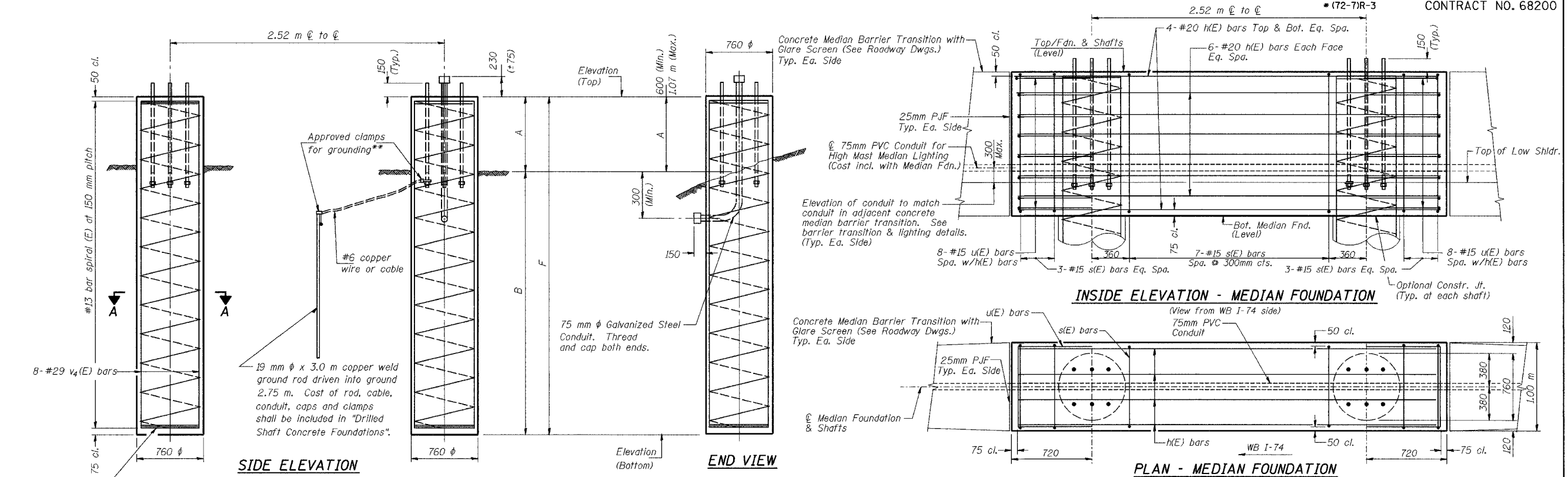
STATE OF ILLINOIS  
DEPARTMENT OF TRANSPORTATION

ROUTE No.	SECTION	COUNTY	TOTAL SHEETS	SHEET NO.
FAI 74	*	PEORIA	1360	1307
STA.		TO STA.		
F.H.W.A. REGION		ILLINOIS PROJECT		

CONTRACT NO. 68200

For anchor rod size and placement, see Support Frame Detail Sheet.

\*\*Anchor rod shall be ground or filed to bright metal at clamp and cable connection location.



Structure Number	Station	Left Foundation			Right Foundation			Class S1 Concrete (cu. m.)				
		Elevation Top	Elevation Bottom	A (m)	B (m)	F (m)	Elevation Top		Elevation Bottom	A (m)	B (m)	F (m)
4S0721074L089.3	143+798.000	191.030	183.624	2.406 (1)	5.000	7.406	189.353	178.853	1.100	9.400	10.500	14.07 (2)
Median Foundation (3)	143+798.000	191.030	188.624	2.406 (1)								9.53
4S0721074L089.4	144+154.000	186.222(4)					186.005	178.905	1.100	6.000	7.100	6.44
4S0721074L089.7	144+540.000	182.210 (4)					181.405	175.305	1.100	5.000	6.100	5.53
											Total	35.57

**NOTES:**  
The foundation dimensions shown are based on the presence of mostly cohesive soils with an average Unconfined compressive Strength (Qu) of at least 120 kPa, which must be determined by previous soil investigations at the jobsite. When other conditions are indicated, the boring data will be included in the plans and the foundation dimensions shown will be the result of site specific designs.  
If the conditions encountered are different than those indicated, the Contractor shall notify the Engineer to determine if the foundation dimensions need to be modified. If dimensions "B" or "F" are revised by more than 300 mm by the contractor, "as-built" plans shall be prepared and submitted to the District Bureau of Operations for future reference.  
Concrete shall be placed monolithically, without construction joints.  
No sonotubes or decomposable forms shall be used below the lower conduit entrance. Permanent metal forms or other shielding may not be left in place below that elevation without the Engineers' written permission.  
Backfill shall be placed per Article 502 of Standard Specifications, and prior to erection of support column.  
A normal surface finish followed by a Bridge Seat Sealer application will be required on concrete surfaces above the lowest elevation 150 mm below finished ground line. Cost included in "Drilled Shaft Concrete Foundations".

**BAR LIST-EACH FOUNDATION**

Bar	Number	Size	Length	Shape
v4(E)	16	#29	D less 127	—
#13 bar spiral (E)				— see "SIDE ELEVATION"

**MEDIAN FOUNDATION (Sta. 143+798.000 only)**

Bar	Number	Size	Length	Shape
s(E)	13	#15	6.66	□
h(E)	20	#20	3.81	—
u(E)	16	#15	2.17	—

- "A" is measured from the bottom of the proposed concrete median foundation.
- The concrete quantity includes the shafts from the bottom of the median foundation to the bottom of the shafts.
- All items required to construct the median foundation shall be included in the cost of "Drilled Shaft Concrete Foundations".
- The elevation shown is at the top of the median foundation and is for information only. The median foundation was constructed in a previous contract. The contractor shall field verify the given elevation prior to fabrication of the support frame for the steel truss.

DESIGNED	RJW
CHECKED	KJN
DRAWN	RJW
CHECKED	KJN

EXAMINED	2004
PASSED	ENGINEER OF STRUCTURAL SERVICES
	ENGINEER OF BRIDGES AND STRUCTURES

OS4-F3(M) 11/1/2002

**DETAILS FOR DN 250 SUPPORT FRAME**  
TYPE I-S or II-S TRUSS

**OVERHEAD SIGN STRUCTURES**  
**DRILLED SHAFT DETAILS**

ILLINOIS DEPARTMENT OF TRANSPORTATION  
SIGNING PLAN  
W.B. I-74 STA. 143+798, S.N. 4S0721074L089.3  
W.B. I-74 STA. 144+154, S.N. 4S0721074L089.4  
W.B. I-74 STA. 144+540, S.N. 4S0721074L089.7

PEORIA CO., IL. DATE: 11-11-04

M:\Proj\3573\Sign Structures\Contract 107\sp\1001-7Aoh-sft.dgn