

F.A.P. RTE.	SECTION	COUNTY	TOTAL SHEETS	SHEET NO.
71	(3R)RS-5	SANGAMON	25	1

CONTRACT NO. 72614

STATE OF ILLINOIS  
DEPARTMENT OF TRANSPORTATION  
DIVISION OF HIGHWAYS

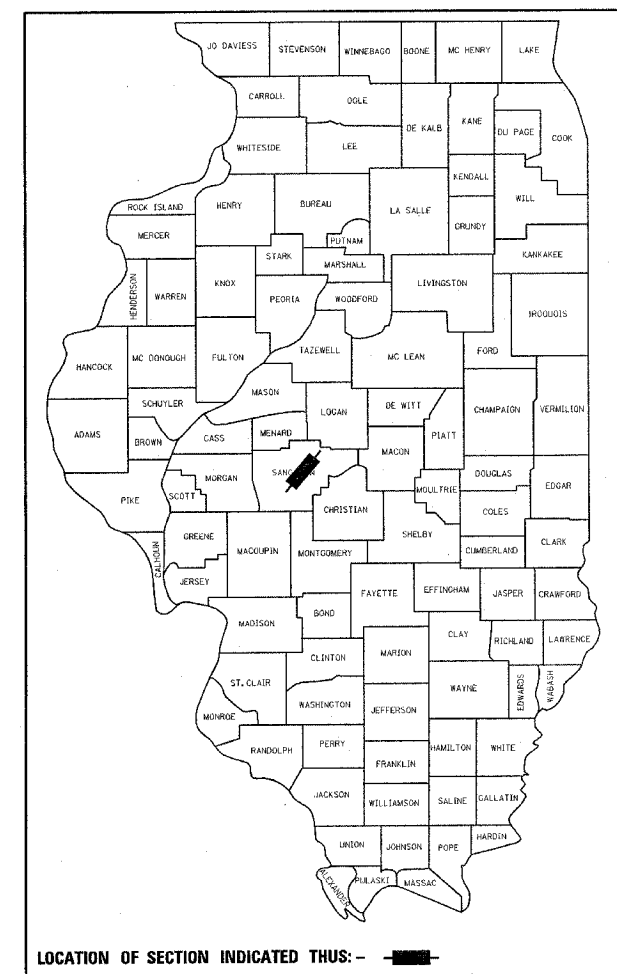
**PROPOSED  
HIGHWAY PLANS**

FAP ROUTE 71 (IL. RTE. 54)  
SECTION (3R)RS-5  
PROJECT: F-0071(112)  
SANGAMON COUNTY

C-96-512-05

FOR INDEX OF SHEETS AND  
HIGHWAY STANDARDS, SEE SHEET NO. 2

D-96-529-01



LOCATION OF SECTION INDICATED THUS: —

WEST OF BISSELL ROAD/OTHER PRINCIPAL ARTERIAL  
EAST OF BISSELL ROAD/MINOR ARTERIAL  
F.A.P. RTE 71 (IL 54) ADT 2003 = 8200  
PV = 92% SU = 5% MU = 3%  
DESIGN SPEED = 55/45 MPH.

BRIDGE OMISSION  
STA. 179+97.59 TO  
STA. 189+09.27

STATION EQUATION  
STA. 118+28.70 (S.B.) BK. =  
STA. 98+15.41 AHD.

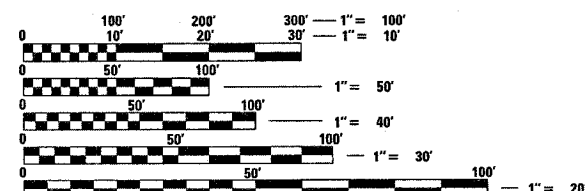
STATION EQUATION  
STA. 117+07.42 (N.B. ENDS) =  
STA. 117+68.70 (S.B.)

PROJECT BEGINS  
STA. 64+69.41 (N.B.)  
STA. 66+90.50 (S.B.)

STATION EQUATION  
STA. 265+05.65 BK. =  
STA. 40+88.70 AHD.

PROJECT ENDS  
STATION 55+00.00

DISTRICT 6 NO. (815) 434-6131  
PROJECT ENGINEER: JOHN BARANZELLI  
SQUAD LEADER: MARCUS BRUCE  
TOWNSHIP: CLEAR LAKE

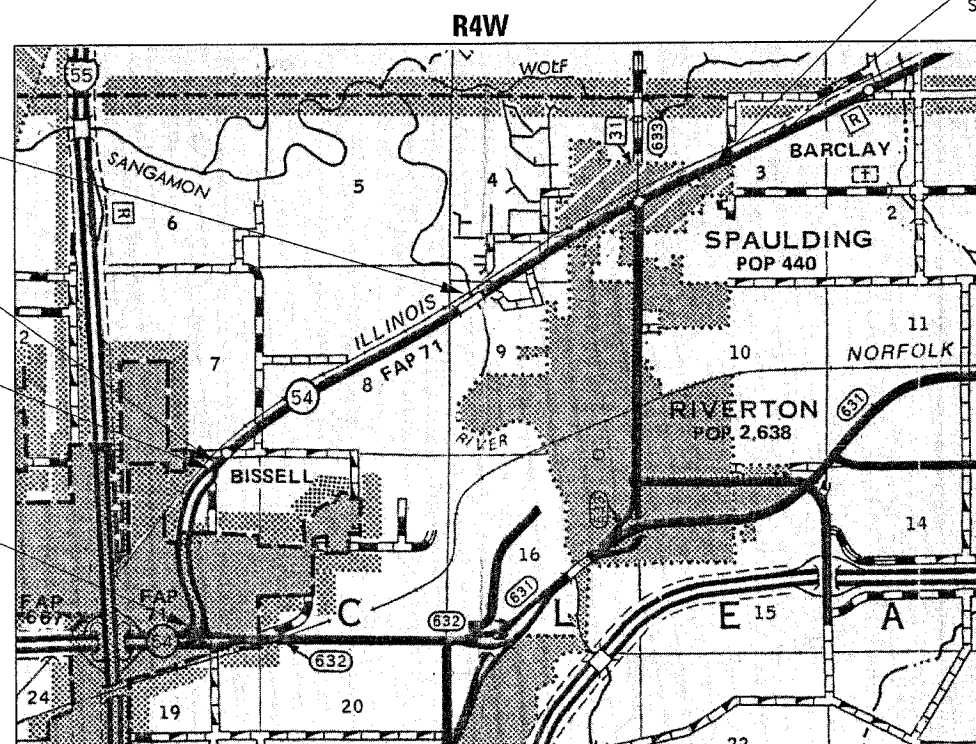


FULL SIZE PLANS HAVE BEEN PREPARED USING STANDARD  
ENGINEERING SCALES. REDUCED SIZED PLANS WILL NOT  
CONFORM TO STANDARD SCALES. IN MAKING MEASUREMENTS  
ON REDUCED PLANS, THE ABOVE SCALES MAY BE USED.

J.U.L.I.E.  
JOINT UTILITY LOCATION INFORMATION FOR EXCAVATION  
1-800-892-0123

PLANS PREPARED BY:

**JOHNSON, DEPP & QUISENBERRY**  
CONSULTING ENGINEERS  
6417 Cherylwood Drive Springfield, Illinois 62707  
Phone: (217) 529-4534 Fax: (217) 529-8278



TOTAL LENGTH OF SECTION (3R)RS-5 = 23,239.74 FEET = 4.40 MILES  
OMISSION LENGTH = 911.68 FEET = 0.17 MILES  
NET LENGTH OF PROJECT = 22,328.06 FEET = 4.23 MILES



DATE 12.03.04  
LICENSE EXPIRES 11/30/05

STATE OF ILLINOIS  
DEPARTMENT OF TRANSPORTATION  
DIVISION OF HIGHWAYS

SUBMITTED FEB. 14 20 05  
*Christ H. Reed*  
DISTRICT ENGINEER

March 25, 20 05  
*Mike Nunez*  
ENGINEER OF DESIGN AND ENVIRONMENT

March 25, 20 05  
*Victor Madler*  
DIRECTOR, DIVISION OF HIGHWAYS

**PRINTED BY THE AUTHORITY  
OF THE STATE OF ILLINOIS**

**RATES OF APPLICATION**

THE FOLLOWING RATES OF APPLICATION HAVE BEEN ASSUMED IN CALCULATING PLAN QUANTITIES:

PRIMECOAT (BITUMINOUS)  
 COLDMILLED OR EXIST. PAVEMENT- 0.00038 TONS/SQ.YD..  
 NEW BINDER- 0.00011 TONS/SQ.YD.

PRIMECOAT (AGGREGATE) - 0.002 TONS/SQ.YD.

BITUMINOUS SURFACE OR BINDER - 2.016 TONS/CY.  
 AGGREGATE- 2.05 TONS/CY.

**MIXTURE REQUIREMENTS**

THE FOLLOWING MIXTURE REQUIREMENTS ARE APPLICABLE FOR THIS PROJECT.

MIXTURE USE(S):	BITUMINOUS SURF.	LEVELING BINDER	BIT. CONC. BASE CSE.	BIT. SHOULDER	INCIDENTAL BIT. SURF.
PG:	PG 64-22	PG 64-22	PG 58-22	PG 58-22	PG 64-22
RAP % (MAX):	15%	20%	15%	15%	15%
DESIGN AIR VOIDS	4.0% @ Ndes=50	4.0% @ Ndes=50	2.0% @ Ndes=50	2.0% @ Ndes=30	4.0% @ Ndes=50
MIXTURE COMPOSITION (GRADATION MIXTURE)	IL 9.5 OR 12.5	IL 9.5	IL 19.0	BAM	IL 9.5 OR 12.5
FRICITION AGGREGATE:	MIX "D"	N/A	N/A	N/A	MIX "C"

**INDEX OF SHEETS**

1. COVER SHEET
2. INDEX OF SHEETS, HIGHWAY STANDARDS, COMMITMENTS AND GENERAL NOTES
- 3.-4. SUMMARY OF QUANTITIES
- 5.-7. TYPICAL SECTIONS
- 8.-11. SCHEDULE OF QUANTITIES
- 12.-14. ALIGNMENT LAYOUT
15. PLAN & PROFILE SHEET (ALLEN DR.)
- 16.-17. DETAIL SHEETS
- 18.-21. DISTRICT DETAILS
- 22.-26. CROSS SECTIONS (ALLEN DR.)

**HIGHWAY STANDARDS**

- 280001-02 TEMPORARY EROSION CONTROL SYSTEMS
- 406201 MAILBOX TURNOUT
- 442201-01 CLASS C AND D PATCHES
- 482011-01 BIT. SHLD. STRIPS/SHLDS. WITH RESURFACING OR WIDENING AND RESURFACING PROJECTS
- 542401 METAL END SECTION FOR PIPE CULVERTS
- 630301-03 SHOULDER WIDENING FOR TYPE 1 (SPECIAL) GUARDRAIL TERMINALS
- 701001-01 OFF-RD OPERATIONS, 2L, 2W, MORE THAN 4.5m (15') AWAY
- 701006-02 OFF-RD OPERATIONS, 2L, 2W, 4.5m (15') TO 600mm (24") FROM PAVEMENT EDGE
- 701011-01 OFF-RD MOVING OPERATIONS, 2L, 2W DAY ONLY
- 701201-02 LANE CLOSURE, 2L, 2W, DAY ONLY FOR SPEEDS ≥ 45 MPH
- 701301-02 LANE CLOSURE 2L, 2W SHORT TIME OPERATIONS
- 701306-01 LANE CLOSURE, 2L, 2W SLOW MOVING OPERATIONS DAY ONLY FOR SPEEDS ≥ 45 MPH
- 701311-02 LANE CLOSURE 2L, 2W MOVING OPERATIONS-DAY ONLY
- 701326-02 LANE CLOSURE 2L, 2W PAVEMENT WIDENING FOR SPEEDS ≥ 45 MPH
- 702001-05 TRAFFIC CONTROL DEVICES
- 720001 SIGN PANEL MOUNTING DETAILS
- 780001-01 TYPICAL PAVEMENT MARKINGS
- 781001-02 TYPICAL APPLICATIONS RAISED REFLECTIVE PAVEMENT MARKERS
- 000001-04 STANDARD SYMBOLS, ABBREVIATIONS AND PATTERNS
- 001001 AREAS OF REINFORCEMENT REBARS
- 001006 DECIMAL OF AN INCH AND OF A FOOT

**GENERAL NOTES**

THE STANDARDS AND REVISION NUMBER LISTED SHALL APPLY TO THIS PROJECT.

WHERE SECTION OR SUBSECTION MONUMENTS ARE ENCOUNTERED, THE ENGINEER SHALL BE NOTIFIED BEFORE SUCH MONUMENTS ARE REMOVED. THE CONTRACTOR SHALL PROTECT AND CAREFULLY PRESERVE ALL PROPERTY MARK AND MONUMENTS UNTIL THE OWNER AND AUTHORIZED SURVEYOR OR AGENT HAS WITNESSED OR OTHERWISE REFERENCED THEIR ACTION.

THE NOMINAL THICKNESS FOR BASE AND SURFACE COURSE IS SHOWN ON THE TYPICAL SECTIONS, STANDARDS, SCHEDULES, OR SPECIAL DETAILS. THE CONSTRUCTED THICKNESS OF THE ABOVE ITEMS SHALL NOT BE LESS THAN 90 PERCENT OF THE NOMINAL THICKNESS AT ANY LOCATION.

THE THICKNESS OF BITUMINOUS MIXTURE SHOWN ON THE PLANS IS THE NOMINAL THICKNESS. DEVIATIONS FROM THE NOMINAL THICKNESS WILL BE PERMITTED WHEN SUCH DEVIATIONS OCCUR DUE TO IRREGULARITIES IN THE EXISTING SURFACE OR BASE ON WHICH THE BITUMINOUS MIXTURE IS BEING PLACED.

CONTINUOUS PAVING OPERATIONS ON THE MAIN ROADWAY SHALL BE MAINTAINED AT ALL TIMES DURING THE CONSTRUCTION OF THE BITUMINOUS SURFACE. NO INTERRUPTIONS FOR SIDE ROADS, ENTRANCE, TURN LANES, ETC. WILL BE ALLOWED.

UP TO 4,000 TONS OF THE MATERIAL RESULTING FROM THE BITUMINOUS SURFACE REMOVAL WILL REMAIN THE PROPERTY OF THE STATE. THE CONTRACTOR SHALL STOCKPILE THIS MATERIAL AT THE IDOT DISTRICT 6 OPERATIONS: RIVERTON MAINTENANCE FACILITY AT 5204 OLD ROUTE 36 - SPRINGFIELD, IL. 62707 ANY EXCESS BEYOND THE 4,000 TONS WILL BE THE PROPERTY OF THE CONTRACTOR.

THE LOCATIONS OF EXISTING WATER MAINS, GAS MAINS, SEWERS, ELECTRIC POWER LINES, TELEPHONE LINES AND OTHER UTILITIES AS SHOWN ON THE PLANS ARE BASED ON THE BEST INFORMATION AVAILABLE, BUT THEY ARE NOT GUARANTEED. ALL UTILITY LOCATIONS SHOWN ARE SUPPLIED BY THE UTILITY COMPANIES. IT IS THE CONTRACTOR'S RESPONSIBILITY TO ASCERTAIN THEIR EXACT LOCATION FROM THE UTILITY COMPANIES AND BY FIELD INSPECTION.

ACCESS MUST BE MAINTAINED TO ALL EXISTING PROPERTIES DURING CONSTRUCTION PER ARTICLE 107.09 UNLESS ARRANGEMENTS ARE MADE IN WRITING BY THE CONTRACTOR WITH THE PROPERTY OWNERS WITH A COPY TO THE ENGINEER FOR SHORT-TERM CLOSURES.

ALL ELEVATIONS SHOWN ON THE PLANS ARE ESTABLISHED FROM U.S.C.S. MEAN SEA LEVEL DATUM.

**COMMITMENTS**

COMMITMENTS ARE NOT TO BE ALTERED WITHOUT THE WRITTEN APPROVAL OF ALL PARTIES TO WHICH THE COMMITMENT WAS MADE.

NO COMMITMENTS

<b>IDOT DISTRICT 6</b>	
EXAMINED <u>Feb 10</u> , 2005	<u>[Signature]</u> <b>OPERATIONS ENGINEER</b>
EXAMINED <u>FEB 10</u> , 2005	<u>[Signature]</u> <b>PROGRAM IMPLEMENTATION ENGINEER</b>
EXAMINED <u>Feb. 14</u> , 2005	<u>[Signature]</u> <b>PROGRAM DEVELOPMENT ENGINEER</b>

REVISIONS	
NAME	DATE
GUARDRAIL/TMJ	02-07-05

ILLINOIS DEPARTMENT OF TRANSPORTATION

INDEX, STANDARDS LIST,  
 COMMITMENTS, GENERAL NOTES,  
 DISTRICT SIGNATURE BLOCK

SCALE: VERT. \_\_\_\_\_  
 HORIZ. \_\_\_\_\_  
 DATE \_\_\_\_\_

DRAWN BY \_\_\_\_\_  
 CHECKED BY \_\_\_\_\_

SUMMARY OF QUANTITIES

URBAN  
80% FED.  
20% STATE  
1000

F.A.P. RTE.	SECTION	COUNTY	TOTAL SHEETS	SHEET NO.
71	(3R)RS-5	SANGAMON	25	3
STA.		TO STA.		
FED. ROAD DIST. NO.	ILLINOIS	FED. AID PROJECT		
<b>CONTRACT NO. 72614</b>				

CODE NO.	ITEM	UNIT	TOTAL QUANTITY	MAINLINE ROADWAY
< COL2 >	< COL3 >	< COL4 >	< COL5 >	< COL6 >
20200200	EARTH EXCAVATION	CU YD	243	243
20200500	EARTH EXCAVATION (WIDENING)	CU YD	2014.8	2014.8
* 25000200	SEEDING, CLASS 2	ACRE	0.46	0.46
* 25000400	NITROGEN FERTILIZER NUTRIENT	POUND	42	42
* 25000500	PHOSPHORUS FERTILIZER NUTRIENT	POUND	42	42
* 25000600	POTASSIUM FERTILIZER NUTRIENT	POUND	42	42
* 25100115	MULCH, METHOD 2	ACRE	0.46	0.46
* 25100630	EROSION CONTROL BLANKET	SQ YD	2210	2210
28000200	EARTH EXCAVATION FOR EROSION CONTROL	CU YD	1.2	1.2
28000250	TEMPORARY EROSION CONTROL SEEDING	POUND	46	46
28000300	TEMPORARY DITCH CHECKS	EACH	3	3
35800100	PREPARATION OF BASE	SQ YD	2664.9	2664.9
40200800	AGGREGATE SURFACE COURSE, TYPE B	TON	26.6	26.6
40600200	BITUMINOUS MATERIALS (PRIME COAT)	TON	34.1	34.1
40600300	AGGREGATE (PRIME COAT)	TON	277.2	277.2
40600895	CONSTRUCTING TEST STRIP	EACH	1	1
40600980	BITUMINOUS SURFACE REMOVAL - BUTT JOINT	SQ YD	1978.8	1978.8
40600985	PORTLAND CEMENT CONCRETE SURFACE REMOVAL - BUTT JOINT	SQ YD	218.9	218.9
40600990	TEMPORARY RAMP	SQ YD	805.2	805.2
40800020	BITUMINOUS MATERIALS (PRIME COAT)	TON	0.61	0.61
40800030	AGGREGATE (PRIME COAT)	TON	2.99	2.99
44000006	BITUMINOUS SURFACE REMOVAL 1 1/2"	SQ YD	2864	2864
44000030	BITUMINOUS SURFACE REMOVAL (VARIABLE DEPTH)	SQ YD	65705.9	65705.9
44000100	PAVEMENT REMOVAL	SQ YD	172	172
44200168	PAVEMENT PATCHING, TYPE II, 14 INCH	SQ YD	2000	2000
44200172	PAVEMENT PATCHING, TYPE III, 14 INCH	SQ YD	250	250
44200174	PAVEMENT PATCHING, TYPE IV, 14 INCH	SQ YD	250	250
48101200	AGGREGATE SHOULDERS, TYPE B	TON	1686.6	1686.6
48202400	BITUMINOUS SHOULDERS SUPERPAVE 6"	SQ YD	125	125
50105220	PIPE CULVERT REMOVAL	FOOT	44	44
54200220	PIPE CULVERTS, CLASS D, TYPE 1 15"	FOOT	190	190
54213450	END SECTIONS 15"	EACH	6	6
60500060	REMOVING INLETS	EACH	8	8
67000400	ENGINEER'S FIELD OFFICE, TYPE A	CAL MO	5	5
67100100	MOBILIZATION	L SUM	1	1
70100450	TRAFFIC CONTROL AND PROTECTION, STANDARD 701201	L SUM	1	1
70100460	TRAFFIC CONTROL AND PROTECTION, STANDARD 701306	L SUM	1	1
70100500	TRAFFIC CONTROL AND PROTECTION, STANDARD 701326	L SUM	1	1
70103815	TRAFFIC CONTROL SURVEILLANCE	CAL DA	5	5
70300100	SHORT-TERM PAVEMENT MARKING	FOOT	8292	8292
70300230	TEMPORARY PAVEMENT MARKING - LINE 5"	FOOT	68505	68505
70300260	TEMPORARY PAVEMENT MARKING - LINE 12"	FOOT	255	255
70301000	WORK ZONE PAVEMENT MARKING REMOVAL	SQ FT	29720	29720
* 72000100	SIGN PANEL - TYPE 1	SQ FT	7.5	7.5
* 72500100	OBJECT MARKER - TYPE 1	EACH	2	2
* 73000100	WOOD SIGN SUPPORT	FOOT	36	36
* 78001120	PAINT PAVEMENT MARKING - LINE 5"	FOOT	43745	43745
78003100	PREFORMED PLASTIC PAVEMENT MARKING, TYPE B - LETTERS AND SYMBOLS	SQ FT	15.6	15.6
78003120	PREFORMED PLASTIC PAVEMENT MARKING, TYPE B - LINE 5"	FOOT	2070	2070
78003150	PREFORMED PLASTIC PAVEMENT MARKING, TYPE B - LINE 12"	FOOT	255	255
* 78008220	POLYUREA PAVEMENT MARKING TYPE I - LINE 5"	FOOT	22650	22650
* 78008230	POLYUREA PAVEMENT MARKING TYPE I - LINE 6"	FOOT	40	40
* 78100100	RAISED REFLECTIVE PAVEMENT MARKER	EACH	378	378
78300200	RAISED REFLECTIVE PAVEMENT MARKER REMOVAL	EACH	378	378

\*SPECIALTY ITEMS

REVISIONS	
NAME	DATE
GUARDRAIL/TMJ	02-07-05

ILLINOIS DEPARTMENT OF TRANSPORTATION  
SUMMARY OF QUANTITIES  
SHEET 1 OF 2  
FAP 71 (IL 54)  
SECTION (3R)J-1  
SANGAMON COUNTY  
SCALE: VERT.  
HORIZ.  
DATE 02-07-05  
DRAWN BY TMJ  
CHECKED BY MEB

ca:\projects\ed52901\jdg-fina.l12-20-04\020705summqty.dgn  
2/10/2005  
\*REF01

SUMMARY OF QUANTITIES

F.A.P. RTE.	SECTION	COUNTY	TOTAL SHEETS	SHEET NO.
71	(3R)RS-5	SANGAMON	25	4
STA.		TO STA.		
FED. ROAD DIST. NO.	ILLINOIS	FED. AID PROJECT		

CONTRACT NO. 72614

URBAN  
80% FED.  
20% STATE  
1.000

CODE NO.	ITEM	UNIT	TOTAL QUANTITY	MAINLINE ROADWAY
* C2002636	SHRUB, EUONYMUS ALATA COMPACTA (DWARF WINGED EUONYMUS), 3' HEIGHT, BALLED AND BURLAPPED	EACH	1	1
X0321374	GRADE - SHAPE SHOULDERS	FOOT	3500	3500
X3560140	BITUMINOUS CONCRETE BASE COURSE WIDENING, SUPERPAVE 10 INCH	SQ YD	4406.7	4406.7
X4066424	BITUMINOUS CONCRETE SURFACE COURSE, SUPERPAVE, MIX "D", N50	TON	6183.1	6183.1
X4066765	LEVELING BINDER (MACHING METHOD), SUPERPAVE N50	TON	2952.5	2952.5
X4080020	INCIDENTAL BITUMINOUS SURFACING, SUPERPAVE, N50	TON	442.6	442.6
* XX004671	SHRUB, FORSYTHIA X 'MEADOWLARK' 3' HEIGHT, BALLED AND BURLAPPED	EACH	2	2

\*SPECIALTY ITEMS

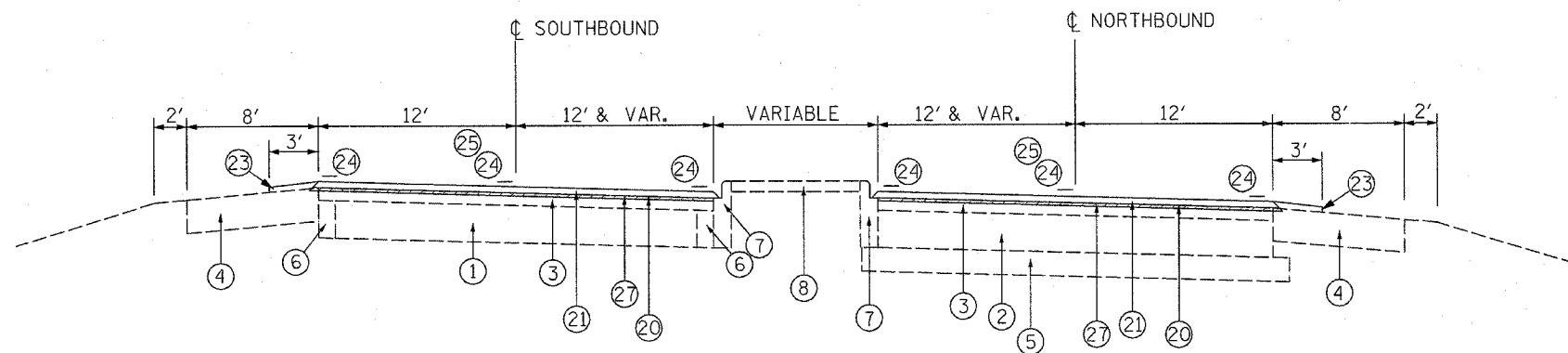
REVISIONS	
NAME	DATE
GUARDRAIL/TMJ	02-07-05

ILLINOIS DEPARTMENT OF TRANSPORTATION  
SUMMARY OF QUANTITIES  
SHEET 2 OF 2  
FAP 71 (IL 54)  
SECTION (3R)J-1  
SANGAMON COUNTY

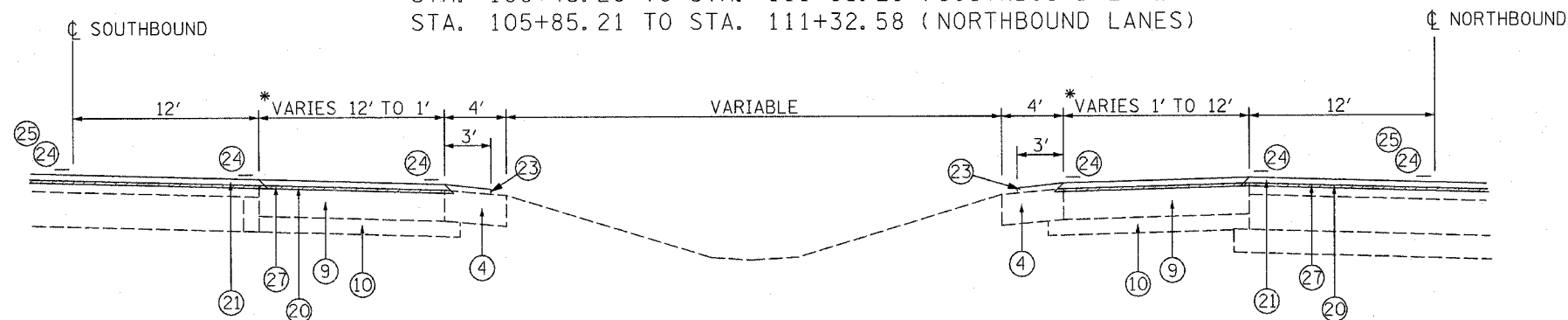
SCALE: VERT.  
HORIZ.  
DATE 02-07-05

DRAWN BY TMJ  
CHECKED BY MEB

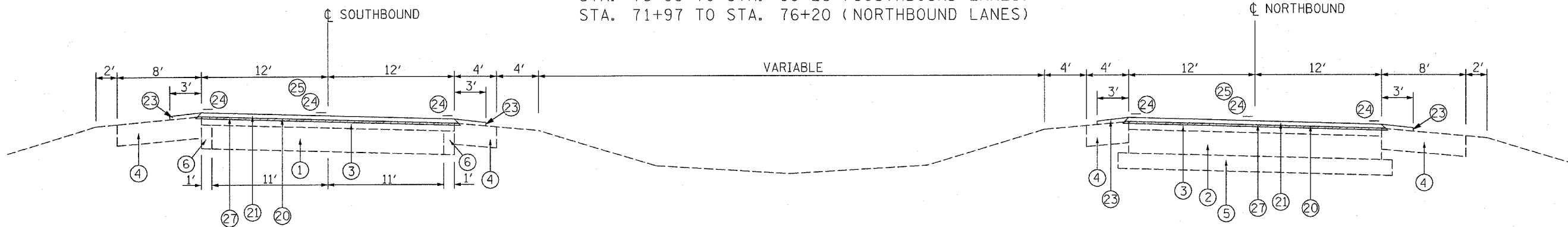
F.A.P. RTE.	SECTION	COUNTY	TOTAL SHEETS	SHEET NO.
71	(3R)RS-5	SANGAMON	25	5
STA.		TO STA.		
FED. ROAD DIST. NO.		ILLINOIS FED. AID PROJECT		
CONTRACT NO. 72614				



STA. 108+43.29 TO STA. 111+93.29 (SOUTHBOUND LANES)  
 STA. 105+85.21 TO STA. 111+32.58 (NORTHBOUND LANES)



LEFT TURN LANES FOR C.E. ENTRANCE AT STA. 76+00 (SOUTHBOUND)  
 \*200' (12' WIDTH) - 200' TAPER  
 STA. 76+00 TO STA. 80+23 (SOUTHBOUND LANES)  
 STA. 71+97 TO STA. 76+20 (NORTHBOUND LANES)

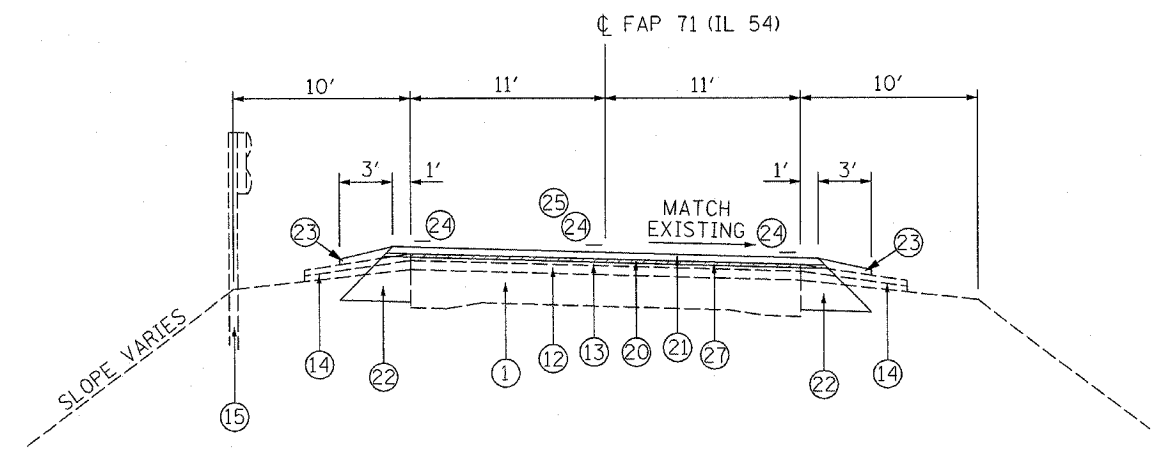


STA. 66+90.50 TO STA. 108+43.29 (SOUTHBOUND LANES)  
 STA. 64+69.41 TO STA. 105+85.21 (NORTHBOUND LANES)

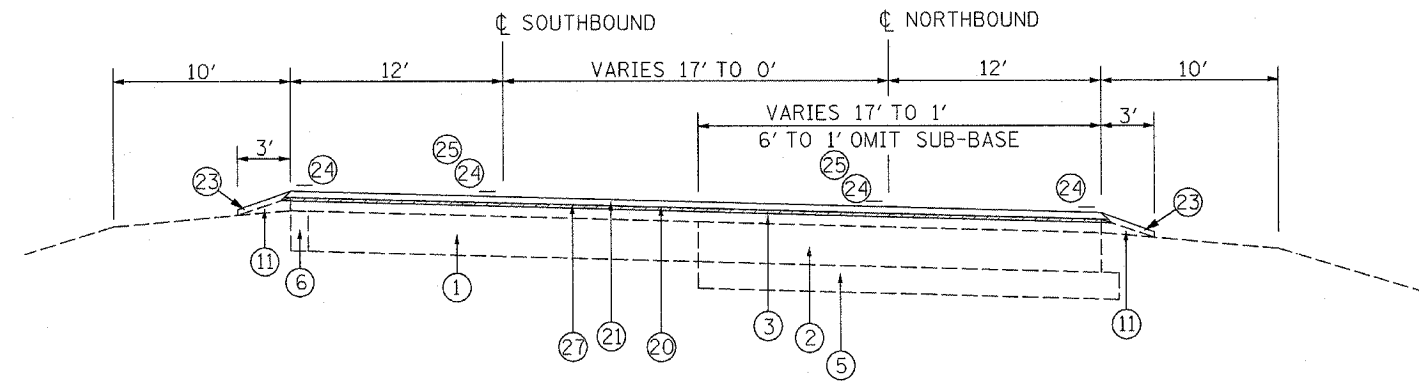
1. ORIGINAL 22' P.C. CONCRETE PAVEMENT (1940)
2. EXISTING P.C. CONCRETE BASE COURSE 9" (1962)
3. EXISTING BITUMINOUS SURFACE AND BINDER COURSE 3" (1962)
4. EXISTING AGGREGATE SHOULDER 8" (1962)
5. EXISTING SUB-BASE GRANULAR MATERIAL TYPE A 6" (1962)
6. EXISTING P.C. CONCRETE BASE COURSE WIDENING 9" (1962)
7. EXISTING CONCRETE CURB AND GUTTER (1962)
8. EXISTING P.C. CONCRETE MEDIAN SURFACE 2 1/2" OR P.C. CONCRETE MEDIAN TYPE B MODIFIED (SOLID) (1962)
9. EXISTING P.C. CONCRETE BASE 8" (1975)
10. EXISTING STABILIZED SUB-BASE 4" (1975)
11. EXISTING GRAVEL SHOULDER TYPE B (1962)
12. EXISTING BITUMINOUS CONCRETE SURFACE 2" (1977)
13. EXISTING BITUMINOUS CONCRETE SURFACE 1 1/2" (1991)
14. EXISTING AGGREGATE SHOULDERS (PLACED AT VARIOUS TIMES - NO DEFINED THICKNESS)
15. EXISTING GUARDRAIL
16. EXISTING BITUMINOUS CONCRETE SURFACE 1 1/2" (1996)
17. EXISTING BITUMINOUS CONCRETE SHOULDER 8' (1996)
18. EXISTING AGGREGATE SHOULDER, TY. B 6" (1996)
20. PROPOSED LEVELING BINDER (MACHINE METHOD), SUPERPAVE N 50 (3/4")
21. PROPOSED BITUMINOUS CONCRETE SURFACE COURSE, SUPERPAVE, MIX "D" N50 (1 1/2")
22. PROPOSED BITUMINOUS CONCRETE BASE COURSE WIDENING, SUPERPAVE 10 INCH
23. PROPOSED AGGREGATE SHOULDERS, TYPE B
24. PROPOSED PAVEMENT MARKING
25. PROPOSED RAISED REFLECTIVE PAVEMENT MARKERS
27. PROPOSED BITUMINOUS SURFACE REMOVAL (VARIABLE DEPTH) - NOMINAL DEPTH AT  $\phi$  1/2"
28. PROPOSED BITUMINOUS SURFACE REMOVAL 1 1/2"

REVISIONS		ILLINOIS DEPARTMENT OF TRANSPORTATION
NAME	DATE	
		F.A.P. RTE. 71 (IL 54) TYPICAL SECTIONS
DATE		DRAWN BY CHECKED BY

F.A.P. RTE.	SECTION	COUNTY	TOTAL SHEETS	SHEET NO.
71	(3R/RS-5)	SANGAMON	25	6
STA.		TO STA.		
FED. ROAD DIST. NO.		ILLINOIS FED. AID PROJECT		
CONTRACT NO. 72614				



STA. 117+68.70 TO STA. 118+28.70  
 EQUATION STA. 118+28.70 BK. = STA. 98+15.41 AHD.  
 STA. 98+15.41 TO STA. 103+05.94  
 STA. 120+76.74 TO STA. 132+82.60  
 STA. 166+98.70 TO STA. 173+71.15 LT./STA. 174+03.95 RT.  
 STA. 217+62.38 TO STA. 227+45.79



STA. 111+93.29 TO STA. 117+68.70 (SOUTHBOUND LANES)  
 STA. 111+32.58 TO STA. 117+07.42 (NORTHBOUND LANES ENDS)  
 EQUATION STA. 117+68.70 (S.B.) = STA. 111+07.42 (N.B.)

1. ORIGINAL 22' P.C. CONCRETE PAVEMENT (1940)
2. EXISTING P.C. CONCRETE BASE COURSE 9" (1962)
3. EXISTING BITUMINOUS SURFACE AND BINDER COURSE 3" (1962)
4. EXISTING AGGREGATE SHOULDER 8" (1962)
5. EXISTING SUB-BASE GRANULAR MATERIAL TYPE A 6" (1962)
6. EXISTING P.C. CONCRETE BASE COURSE WIDENING 9" (1962)
7. EXISTING CONCRETE CURB AND GUTTER (1962)
8. EXISTING P.C. CONCRETE MEDIAN SURFACE 2 1/2" OR P.C. CONCRETE MEDIAN TYPE B MODIFIED (SOLID) (1962)
9. EXISTING P.C. CONCRETE BASE 8" (1975)
10. EXISTING STABILIZED SUB-BASE 4" (1975)
11. EXISTING GRAVEL SHOULDER TYPE B (1962)
12. EXISTING BITUMINOUS CONCRETE SURFACE 2" (1977)
13. EXISTING BITUMINOUS CONCRETE SURFACE 1 1/2" (1991)
14. EXISTING AGGREGATE SHOULDERS (PLACED AT VARIOUS TIMES - NO DEFINED THICKNESS)
15. EXISTING GUARDRAIL

16. EXISTING BITUMINOUS CONCRETE SURFACE 1 1/2" (1996)
17. EXISTING BITUMINOUS CONCRETE SHOULDER 8' (1996)
18. EXISTING AGGREGATE SHOULDER, TY. B 6" (1996)
20. PROPOSED LEVELING BINDER (MACHINE METHOD), SUPERPAVE N 50 (3/4")
21. PROPOSED BITUMINOUS CONCRETE SURFACE COURSE, SUPERPAVE, MIX "D" N50 (1 1/2")
22. PROPOSED BITUMINOUS CONCRETE BASE COURSE WIDENING, SUPERPAVE 10 INCH
23. PROPOSED AGGREGATE SHOULDERS, TYPE B
24. PROPOSED PAVEMENT MARKING
25. PROPOSED RAISED REFLECTIVE PAVEMENT MARKERS
27. PROPOSED BITUMINOUS SURFACE REMOVAL (VARIABLE DEPTH) - NOMINAL DEPTH AT  $\phi$  1/2"
28. PROPOSED BITUMINOUS SURFACE REMOVAL 1 1/2"

REVISIONS	
NAME	DATE

ILLINOIS DEPARTMENT OF TRANSPORTATION

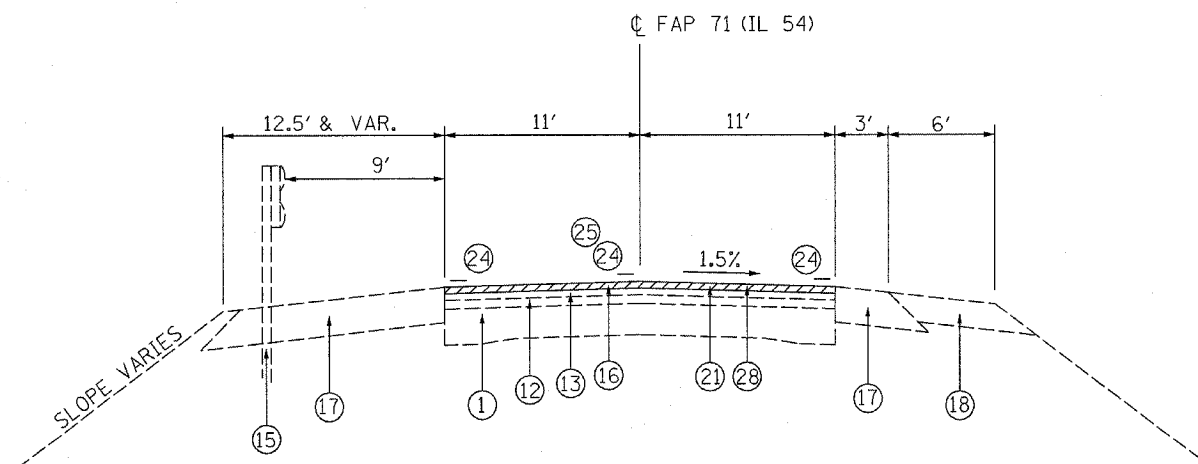
F.A.P. RTE. 71 (IL 54)  
TYPICAL SECTIONS

DRAWN BY  
CHECKED BY

DATE

c:\projects\ed52901\jdg- final-12-20-04\typicalsection.dgn  
 2/10/2005  
 \*REF01

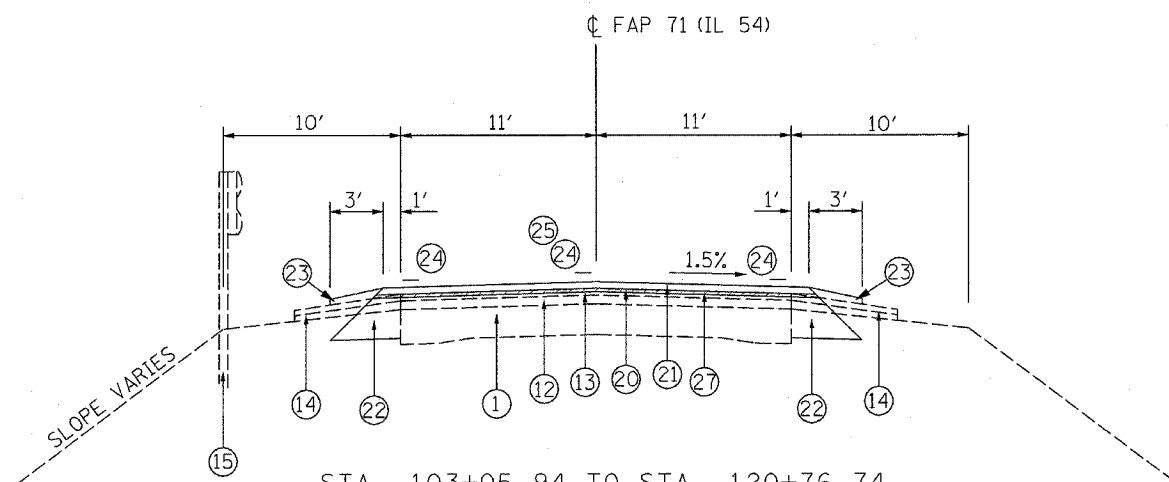
F.A.P. RTE.	SECTION	COUNTY	TOTAL SHEETS	SHEET NO.
71	(3)RS-5	SANGAMON	25	7
STA.		TO STA.		
FED. ROAD DIST. NO.		ILLINOIS FED. AID PROJECT		
CONTRACT NO. 72614				



LT. STA. 173+71.15 TO STA. 179+97.59 RT. STA. 174+03.95 TO STA. 178+06.84  
 RT. STA. 178+06.84 TO STA. 179+97.59

BRIDGE OMISSION  
 STA. 179+97.59 TO STA. 189+09.27

LT. STA. 189+09.27 TO STA. 190+84.07 LT. STA. 190+84.07 TO STA. 194+54.48  
 RT. STA. 189+09.27 TO STA. 190+33.22 RT. STA. 190+33.22 TO STA. 194+54.48



STA. 103+05.94 TO STA. 120+76.74  
 STA. 132+82.60 TO STA. 166+98.70  
 STA. 194+54.48 TO STA. 217+62.38  
 STA. 227+45.79 TO STA. 265+05.65  
 EQUATION STA. 265+05.65 BK. TO STA. 40+88.70 AHD.  
 STA. 40+88.70 TO STA. 55+00

- 1. ORIGINAL 22' P.C. CONCRETE PAVEMENT (1940)
- 2. EXISTING P.C. CONCRETE BASE COURSE 9" (1962)
- 3. EXISTING BITUMINOUS SURFACE AND BINDER COURSE 3" (1962)
- 4. EXISTING AGGREGATE SHOULDER 8" (1962)
- 5. EXISTING SUB-BASE GRANULAR MATERIAL TYPE A 6" (1962)
- 6. EXISTING P.C. CONCRETE BASE COURSE WIDENING 9" (1962)
- 7. EXISTING CONCRETE CURB AND GUTTER (1962)
- 8. EXISTING P.C. CONCRETE MEDIAN SURFACE 2 1/2" OR P.C. CONCRETE MEDIAN TYPE B MODIFIED (SOLID) (1962)
- 9. EXISTING P.C. CONCRETE BASE 8" (1975)
- 10. EXISTING STABILIZED SUB-BASE 4" (1975)
- 11. EXISTING GRAVEL SHOULDER TYPE B (1962)
- 12. EXISTING BITUMINOUS CONCRETE SURFACE 2" (1977)
- 13. EXISTING BITUMINOUS CONCRETE SURFACE 1 1/2" (1991)
- 14. EXISTING AGGREGATE SHOULDERS (PLACED AT VARIOUS TIMES - NO DEFINED THICKNESS)
- 15. EXISTING GUARDRAIL
- 16. EXISTING BITUMINOUS CONCRETE SURFACE 1 1/2" (1996)
- 17. EXISTING BITUMINOUS CONCRETE SHOULDER 8" (1996)
- 18. EXISTING AGGREGATE SHOULDER, TY. B 6" (1996)
- 20. PROPOSED LEVELING BINDER (MACHINE METHOD), SUPERPAVE N 50 (3/4")
- 21. PROPOSED BITUMINOUS CONCRETE SURFACE COURSE, SUPERPAVE, MIX "D" N50 (1 1/2")
- 22. PROPOSED BITUMINOUS CONCRETE BASE COURSE WIDENING, SUPERPAVE 10 INCH
- 23. PROPOSED AGGREGATE SHOULDERS, TYPE B
- 24. PROPOSED PAVEMENT MARKING
- 25. PROPOSED RAISED REFLECTIVE PAVEMENT MARKERS
- 27. PROPOSED BITUMINOUS SURFACE REMOVAL (VARIABLE DEPTH) - NOMINAL DEPTH AT 1/2"
- 28. PROPOSED BITUMINOUS SURFACE REMOVAL 1 1/2"

REVISIONS		ILLINOIS DEPARTMENT OF TRANSPORTATION
NAME	DATE	
		F.A.P. RTE. 71 (IL 54) TYPICAL SECTIONS
DATE		DRAWN BY
		CHECKED BY

c:\projects\ed52901\jdd\12-20-04\typicalsection.dgn  
 2/10/2005  
 \*REF01

ITEM NO. 20200100 EARTH EXCAVATION

LOCATION	EARTH EXCAVATION	EARTH EXCAVATION ADJUSTED FOR SHRINKAGE	EMBANKMENT	EARTHWORK BALANCE WASTE (+) OR SHORTAGE (-)
	CU. YD.	CU. YD.	CU. YD.	CU. YD.
IL 54 STA. 219+60 TO STA. 226+30	243	182	162	+20
TOTAL =	243	182	162	+20

ASSUME SHRINKAGE FACTOR - 25% EARTH EXCAVATION

PAY ITEMS

EARTH EXCAVATION 243 - CU. YD.

ITEM NO. 20200500 EARTH EXCAVATION (WIDENING)

LOCATION	CU. YD.
STA. 117+68.70 TO STA. 118+28.70 (EQUATION)	7.5
STA. 98+15.41 TO STA. 173+71.15 LT./STA. 174+03.95	947.9
STA. 194+54.48 TO STA. 265+05.65 (EQUATION)	882.7
STA. 40+88.70 TO STA. 55+00	176.7
TOTAL =	2014.8

ITEM NO. 25000200 SEEDING, CLASS 2

ITEM NO. 25000400 NITROGEN FERTILIZER NUTRIENT

ITEM NO. 25000500 PHOSPHORUS FERTILIZER NUTRIENT

ITEM NO. 25000600 POTASSIUM FERTILIZER NUTRIENT

ITEM NO. 25100115 MULCH, METHOD 2

ITEM NO. 25100630 EROSION CONTROL BLANKET

ITEM NO. 28000250 TEMPORARY EROSION CONTROL SEEDING

LOCATION	SEEDING						
	CLASS 2	TEMP. EROS. CONTR. SEEDING	FERTILIZER NUTRIENT			MULCH METHOD 2	EROS. CONTR. BLANKET
			NITROGEN	PHOSPHORUS	POTASSIUM		
ACRE	LBS.	LBS.	LBS.	LBS.	ACRE	SQ. YD.	
IL 54 STA. 219+60 TO STA. 226+30	0.46	46	42	42	42	0.46	2210
TOTAL =	0.46	46	42	42	42	0.46	2210

ITEM NO. 28000200 EARTH EXCAVATION FOR EROSION CONTROL

ITEM NO. 28000300 TEMPORARY DITCH CHECKS

LOCATION	EARTH EX. FOR EROS. CONTR. CU. YD.	TEMP. DITCH CHECKS EACH
222+65 RT.	0.4	1
225+60 RT.	0.4	1
TOTAL =	1.2	3

ITEM NO. X3560140 BITUMINOUS CONCRETE BASE COURSE WIDENING, SUPERPAVE 10 INCH

LOCATION	SQ. YD.
STA. 117+68.70 TO STA. 118+28.70 (EQUATION)	15.9
STA. 98+15.41 TO STA. 173+71.15 LT./STA. 174+03.95	2002.4
STA. 194+54.48 TO STA. 265+05.65 (EQUATION)	1864.6
STA. 40+88.70 TO STA. 55+00	373.2
INTERSECTION IL 54 & S. ALLEN DR. (STA. 225+21.85)	150.6
TOTAL =	4406.7

ITEM NO. 35800100 PREPARATION OF BASE

LOCATION	SQ. YD.
P.E., C.E. & S.R. (SEE ENTRANCE DETAIL SCHEDULE)	2664.9
TOTAL =	2664.9

ITEM NO. 40200800 AGGREGATE SURFACE COURSE - TYPE B

LOCATION	TON
P.E., C.E. & S.R. (SEE ENTRANCE DETAIL SCHEDULE)	26.6
TOTAL =	26.6

ITEM NO. 40600200 BITUMINOUS MATERIALS (PRIME COAT)

COLD MILLED OR EXIST. PAVEMENT - 0.00038 TONS/SQ. YD.  
NEW BINDER - 0.00011 TONS/SQ. YD.

LOCATION	TON
STA. 64+69.41 TO STA. 105+83.21 (N.B.)	5.4
STA. 66+90.50 TO STA. 68+00.00 (S.B.)	0.2
STA. 68+00.00 TO STA. 117+68.70 (S.B.)	6.5
STA. 105+83.21 TO STA. 111+32.58 (N.B.)	0.6
STA. 111+32.58 TO STA. 117+07.41 (N.B.)	0.3
STA. 117+68.70 TO STA. 118+28.70 (S.B.)	0.1
EQUATION	
STA. 98+15.41 TO STA. 179+97.59	9.8
BRIDGE OMISSION	
STA. 189+09.27 TO STA. 265+05.65	9.1
EQUATION	
STA. 40+88.70 TO STA. 55+00.00	1.7
INTERSECTION IL 54 & S. ALLEN DR. (STA. 225+21.85)	0.4
TOTAL =	34.1

ITEM NO. 40600300 AGGREGATE (PRIME COAT)

BASED ON 2 COATS - 0.002 TONS/SQ. YD.

LOCATION	TON
STA. 64+69.41 TO STA. 105+83.21 (N.B.)	43.9
STA. 66+90.50 TO STA. 68+00.00 (S.B.)	1.6
STA. 68+00.00 TO STA. 117+68.70 (S.B.)	53.0
STA. 105+83.21 TO STA. 111+32.58 (N.B.)	5.0
STA. 111+32.58 TO STA. 117+07.41 (N.B.)	2.2
STA. 117+68.70 TO STA. 118+28.70 (S.B.)	0.6
EQUATION	
STA. 98+15.41 TO STA. 179+97.59	80.0
BRIDGE OMISSION	
STA. 189+09.27 TO STA. 265+05.65	74.3
EQUATION	
STA. 40+88.70 TO STA. 55+00.00	13.8
INTERSECTION IL 54 & S. ALLEN DR. (STA. 255+21.85)	2.8
TOTAL =	277.2

ITEM NO. 40600895 CONSTRUCTING TEST STRIP

1 EACH

ITEM NO. 40600980 BITUMINOUS SURFACE REMOVAL-BUTT JOINT

LOCATION	SQ. YD.
STA. 64+69.41 TO STA. 65+14.41 (N.B.)	120
STA. 66+90.50 TO STA. 67+35.50 (S.B.)	120
STA. 179+30.09 TO STA. 179+97.59	165
STA. 189+09.27 TO STA. 189+76.77	165
STA. 54+73.75 TO STA. 55+00.00	64.2
P.E., C.E. & S.R. (SEE ENTRANCE DETAIL SCHEDULE)	1263.6
END OF S. ALLEN DR. (RT. STA. 225+21.85)	45
END OF SCHNEIDER (RT. STA. 225+21.85)	36
TOTAL =	1978.8

ITEM NO. 40600985 PORTLAND CEMENT CONCRETE SURFACE REMOVAL - BUTT JOINT

LOCATION	SQ. YD.
P.E., C.E. & S.R. (SEE ENTRANCE DETAIL SCHEDULE)	218.9
TOTAL =	218.9

ITEM NO. 40600990 TEMPORARY RAMP

LOCATION	SQ. YD.
STA. 64+69.91 TO STA. 64+74.41 (N.B.)	13.3
STA. 66+90.50 TO STA. 66+95.50 (S.B.)	13.3
STA. 179+92.59 TO STA. 179+97.59	12.2
STA. 189+09.27 TO STA. 189+14.27	12.2
STA. 54+95.00 TO STA. 55+00.00	12.2
P.E., C.E. & S.R. (SEE ENTRANCE DETAIL SCHEDULE)	722.0
END OF S. ALLEN DR. (RT. STA. 225+21.85)	11.1
END OF SCHNEIDER (RT. STA. 225+21.85)	8.9
TOTAL =	805.2

ITEM NO. 40800020 BITUMINOUS MATERIALS (PRIME COAT)

LOCATION	TON
P.E., C.E. & S.R. (SEE ENTRANCE DETAIL SCHEDULE)	0.61
TOTAL =	0.61

ITEM NO. 40800030 AGGREGATE (PRIME COAT)

LOCATION	TON
P.E., C.E. & S.R. (SEE ENTRANCE DETAIL SCHEDULE)	2.99
TOTAL =	2.99

ITEM NO. X4080020 INCIDENTAL BITUMINOUS SURFACING, SUPERPAVE, N50

LOCATION	TON
P.E., C.E. & S.R. (SEE ENTRANCE DETAIL SCHEDULE)	442.6
TOTAL =	442.6

ITEM NO. 44000006 BITUMINOUS SURFACE REMOVAL 1 1/2"

LOCATION	SQ. YD.
STA. 173+71.15 TO STA. 179+97.59	1531.3
BRIDGE OMISSION	
STA. 189+09.27 TO STA. 194+54.48	1332.7
TOTAL =	2864.0

ITEM NO. 44000030 BITUMINOUS SURFACE REMOVAL (VARIABLE DEPTH)

LOCATION	SQ. YD.
STA. 64+69.41 TO STA. 105+83.21 (N.B.)	10970.1
STA. 66+90.50 TO STA. 68+00.00 (S.B.)	389.3
STA. 68+00.00 TO STA. 117+68.70 (S.B.)	13249.9
STA. 105+83.21 TO STA. 111+32.58 (N.B.)	1251.4
STA. 111+32.58 TO STA. 117+07.41 (N.B.)	542.9
STA. 117+68.70 TO STA. 118+28.70 (S.B.)	146.7
EQUATION	
STA. 98+15.41 TO STA. 173+71.15	18469.6
SEE BIT. SURF. REM. 1 1/2" & TYPICAL SECTION	
STA. 194+54.48 TO STA. 265+05.65	17236.2
EQUATION	
STA. 40+88.70 TO STA. 55+00.00	3449.8
TOTAL =	65705.9

SHEET 1 OF 4

REVISIONS	
NAME	DATE
GUARDRAIL/TMJ	02-08-05

ILLINOIS DEPARTMENT OF TRANSPORTATION

SCHEDULE OF QUANTITIES

SCALE: VERT. HORIZ. DATE 02-08-05

DRAWN BY TMJ CHECKED BY MEB



ITEM NO. 44000100 PAVEMENT REMOVAL

LOCATION	SQ. YD.
SCHNEIDER (RT. STA. 223+50)	172
TOTAL = 172	

ITEM NO. 44200168 PAVEMENT PATCHING, TYPE II, 14 INCH

2000 SQ. YD. (QTY. PROVIDED BY THE DISTRICT)

ITEM NO. 44200172 PAVEMENT PATCHING, TYPE III, 14 INCH

250 SQ. YD. (QTY. PROVIDED BY THE DISTRICT)

ITEM NO. 44200174 PAVEMENT PATCHING, TYPE IV, 14 INCH

250 SQ. YD. (QTY. PROVIDED BY THE DISTRICT)

ITEM NO. 48101200 AGGREGATE SHOULDERS, TYPE B

LOCATION	TON
STA. 64+69.41 TO STA. 105+83.21 (N.B.)	273.3
STA. 66+90.50 TO STA. 68+00.00 (S.B.)	7.3
STA. 68+00.00 TO STA. 117+68.70 (S.B.)	299.4
STA. 105+83.21 TO STA. 111+32.58 (N.B.)	18.2
STA. 111+32.58 TO STA. 117+07.41 (N.B.)	19.1
STA. 117+68.70 TO STA. 118+28.70 (S.B.)	4.0
EQUATION	
STA. 98+15.41 TO STA. 179+97.59	503.1
BRIDGE OMISSION	
STA. 189+09.27 TO STA. 265+05.65	468.4
EQUATION	
STA. 40+88.70 TO STA. 55+00.00	93.8
TOTAL = 1686.6	

ITEM NO. 48202400 BITUMINOUS SHOULDERS SUPERPAVE 6"

LOCATION	SQ YD
INTERSECTION OF IL 54 & S. ALLEN DR. (STA. 225+21.85)	125
TOTAL = 125	

ITEM NO. 50105220 PIPE CULVERT REMOVAL

LOCATION	TYPE	FOOT
RT. STA. 220+73	15" CMP	44
TOTAL = 44		

ITEM NO. 542D0220 PIPE CULVERTS, CLASS D, TYPE 1 15"

LOCATION	FOOT
31' RT. STA. 220+73	50
36' RT. STA. 222+29	50
38' RT. STA. 225+00	90
TOTAL = 190	

ITEM NO. 54213450 END SECTIONS 15"

LOCATION	EACH
31' RT. STA. 220+73	2
36' RT. STA. 222+29	2
38' RT. STA. 225+00	2
TOTAL = 6	

ITEM NO. 60500060 REMOVING INLETS

LOCATION (ALL LOCATED IN THE SHOULDER)	EACH
RT. STA. 157+52	1
LT. STA. 158+15	1
RT. STA. 160+15	1
LT. STA. 161+18	1
RT. STA. 163+16	1
LT. STA. 164+34	1
RT. STA. 166+16	1
LT. STA. 167+39	1
TOTAL = 8	

ITEM NO. 67000400 ENGINEER'S FIELD OFFICE, TYPE A

5 CAL. MO.

ITEM NO. 67100100 MOBILIZATION

1 LUMP SUM

ITEM NO. 70100450 TRAFFIC CONTROL AND PROTECTION, STANDARD 701201

1 LUMP SUM

ITEM NO. 70100460 TRAFFIC CONTROL AND PROTECTION, STANDARD 701306

1 LUMP SUM

ITEM NO. 70100500 TRAFFIC CONTROL AND PROTECTION, STANDARD 701326

1 LUMP SUM

ITEM NO. 70103815 TRAFFIC CONTROL SURVEILLANCE

5 CAL. DA.

REVISIONS	
NAME	DATE
GUARDRAIL/TMJ	02-08-05

ILLINOIS DEPARTMENT OF TRANSPORTATION

SCHEDULE OF QUANTITIES

SCALE: VERT.  
HORIZ.  
DATE 02-08-05

DRAWN BY TMJ  
CHECKED BY MEB

**ITEM NO. 72000100 SIGN PANEL - TYPE 1**

LOCATION	TYPE	SQ FT
END OF SCHNEIDER (RT. STA. 223+85)	R11-I100	7.5
TOTAL = 7.5		

**ITEM NO. 72500100 OBJECT MARKER - TYPE 1 (RED)**

LOCATION	EACH
END OF SCHNEIDER (RT. STA. 223+85)	2
TOTAL = 2	

**ITEM NO. 73000100 WOOD SIGN SUPPORT**

LOCATION	FOOT
END OF SCHNEIDER (RT. STA. 223+85)	3 POST @ 12' 36
TOTAL = 36	

- ITEM NO. 70300100 SHORT-TERM PAVEMENT MARKING
- ITEM NO. 70300230 TEMPORARY PAVEMENT MARKING - LINE 5"
- ITEM NO. 70300260 TEMPORARY PAVEMENT MARKING - LINE 12"
- ITEM NO. 70301000 WORK ZONE PAVEMENT MARKING REMOVAL
- ITEM NO. 78001120 PAINT PAVEMENT MARKING - LINE 5"
- ITEM NO. 78003120 PREFORMED PLASTIC PAVEMENT MARKING, TYPE B - LINE 5"
- ITEM NO. 78003150 PREFORMED PLASTIC PAVEMENT MARKING, TYPE B - LINE 12"
- ITEM NO. 78008220 POLYUREA PAVEMENT MARKING TYPE I - LINE 5"
- ITEM NO. 78008230 POLYUREA PAVEMENT MARKING TYPE I - LINE 6"
- ITEM NO. 78100100 RAISED REFLECTIVE PAVEMENT MARKER
- ITEM NO. 78300200 RAISED REFLECTIVE PAVEMENT MARKER REMOVAL

PAVEMENT MARKING SCHEDULE	2 LANE SECTION		4 LANE CENTER OF PAVEMENT		GORE-TRANS 4 LANE TO 2 LANE		4 LANE SECTION										
	SHORT-TERM PAVEMENT MARKING	TEMPORARY PAVEMENT MARKING-LINE 5"	TEMPORARY PAVEMENT MARKING-LINE 12"	WORK ZONE PAVEMENT MARKING REMOVAL	PAINT PAVEMENT MARKING-LINE 5" WHITE EDGELINES	PAINT PAVEMENT MARKING-LINE 5" YELLOW SKIP-DASH	PAINT PAVEMENT MARKING-LINE 5" YELLOW NO-PASSING	PREFORMED PLASTIC PAVEMENT MARKING, TYPE B - LINE 5" WHITE SKIP-DASH	POLYUREA PAVEMENT MARKING TYPE I LINE 5" YELLOW EDGELINES	POLYUREA PAVEMENT MARKING TYPE I LINE 6" WHITE EDGELINES LT-TURN	PREFORMED PLASTIC PAVEMENT MARKING, TYPE B - LINE 12" YELLOW DIAGONALS	POLYUREA PAVEMENT MARKING TYPE I LINE 5" WHITE EDGELINES	POLYUREA PAVEMENT MARKING TYPE I LINE 5" YELLOW EDGELINES	RAISED REFLECTIVE PAVEMENT MARKER ONE-WAY AMBER	RAISED REFLECTIVE PAVEMENT MARKER ONE-WAY CRYSTAL	RAISED REFLECTIVE PAVEMENT MARKER TWO-WAY AMBER	RAISED REFLECTIVE PAVEMENT MARKER REMOVAL
	FOOT	FOOT	FOOT	SQ. FT.	FOOT	FOOT	FOOT	FOOT	FOOT	FOOT	FOOT	FOOT	FOOT	EACH	EACH	EACH	EACH
STA. 64+69.41 TO STA. 76+00 (N.B.)	336	2640		1137				280				1280	1080		14		14
STA. 66+90.50 TO STA. 76+00 (S.B.)	276	1950		844				230				860	860		16*		16
STA. 76+00 TO STA. 105+85 (N.B.)	900	6720		2900				750				2985	2985		37		37
STA. 76+00 TO STA. 108+40 (S.B.)	972	7490		3229				810				3440	3240		46*		46
STA. 105+85 TO STA. 111+92 (N.B.)	180	1400		603					795			605		15			15
STA. 108+40 TO STA. 112+50 (S.B.)	120	1230	180	526					820	180		410		10			10
STA. 111+92 TO STA. 117+07.42 (N.B. ENDS)	156	1545		661					1030			515		10		3	13
STA. 112+50 TO STA. 117+68.70 (S.B.)	156	1545	75	661					950	40	75	555		10		3	13
STA. 117+68.70 TO STA. 118+28.70 (S.B.)	24	240		103					120			120				1	1
(EQUATION)																	
STA. 98+15.41 TO STA. 122+00	720	5370		2318	4770	600										30	30
STA. 122+00 TO STA. 142+85	624	7010		2990	4170	450	2390									26	26
STA. 142+85 TO STA. 179+97.59	1116	8355		3605	7425	930										46	46
(BRIDGE OMISSION)																	
STA. 189+09.27 TO STA. 215+80	804	6010		2593	5340	670										33	33
STA. 215+80 TO STA. 235+15	576	6580		2806	3870	390	2320									24	24
STA. 235+15 TO STA. 265+05.65	900	6730		2904	5980	750										37	37
(EQUATION)																	
STA. 40+88.70 TO STA. 48+35	228	1680		725	1490	190										9	9
STA. 48+35 TO STA. 53+45	156	1660		709	1020	130	510									6	6
STA. 53+45 TO STA. 55+00	48	350		151	310	40										2	2
+12" DIAGONALS				255													
<b>TOTAL</b>	<b>8292</b>	<b>68505</b>	<b>255</b>	<b>29720</b>	<b>34375</b>	<b>4150</b>	<b>5220</b>	<b>2070</b>	<b>3715</b>	<b>40</b>	<b>255</b>	<b>10770</b>	<b>8165</b>	<b>45</b>	<b>113</b>	<b>220</b>	<b>378</b>

\* INCLUDES LEFT TURN LANES FOR COMM./S.R. @ STA. 76+00

**ITEM NO. 78003100 PREFORMED PLASTIC PAVEMENT MARKING, TYPE B - LETTERS AND SYMBOLS**

LOCATION	TYPE	SQ. FT.
RT. STA. 113+00 (S.B.)	LT. TURN ARROW	15.6
TOTAL = 15.6		

REVISIONS	
NAME	DATE
GUARDRAIL/TMJ	02-08-05

ILLINOIS DEPARTMENT OF TRANSPORTATION

## SCHEDULE OF QUANTITIES

SCALE: VERT.      DRAWN BY TMJ  
 HORIZ.              CHECKED BY MCB  
 DATE 02-08-05

c:\projects\ed52901\jda\_fina1.12-20-04\_schedules.dgn  
 2/10/2005  
 \*REF01

ITEM NO. X4066424 BITUMINOUS CONCRETE SURFACE COURSE, SUPERPAVE, MIX "D", N50

LOCATION	TON
STA. 64+69.41 TO STA. 105+83.21 (N.B.)	926.3
STA. 66+90.50 TO STA. 68+00.00 (S.B.)	24.7
STA. 68+00.00 TO STA. 117+68.70 (S.B.)	1118.8
STA. 105+83.21 TO STA. 111+32.58 (N.B.)	123.7
STA. 111+32.58 TO STA. 117+07.42 (N.B.)	45.9
STA. 117+68.70 TO STA. 118+28.70 (S.B.)	13.5
(EQUATION)	
STA. 98+15.41 TO STA. 179+97.59	1842.4
(BRIDGE OMISSION)	
STA. 189+09.27 TO STA. 265+05.65	1710.5
(EQUATION)	
STA. 40+88.70 TO STA. 55+00.00	317.8
INTERSECTION IL 54 & S. ALLEN DR. (RT. STA. 225+21.85)	59.5
(INCLUDES SCHNEIDER)	
TOTAL =	6183.1

ITEM NO. X4066765 LEVELING BINDER (MACHINE METHOD), SUPERPAVE N50

LOCATION	TON
STA. 64+69.41 TO STA. 105+83.21 (N.B.)	466.7
STA. 66+90.50 TO STA. 68+00.00 (S.B.)	12.4
STA. 68+00.00 TO STA. 117+68.70 (S.B.)	563.7
STA. 105+83.21 TO STA. 111+32.58 (N.B.)	62.3
STA. 111+32.58 TO STA. 117+07.42 (N.B.)	23.2
STA. 117+68.70 TO STA. 118+28.70 (S.B.)	6.8
(EQUATION)	
STA. 98+15.41 TO STA. 173+71.15	857.3
(SEE TYPICAL SECTION)	
STA. 194+54.48 TO STA. 265+05.65	800.0
(EQUATION)	
STA. 40+88.70 TO STA. 55+00.00	160.1
INTERSECTION IL 54 & S. ALLEN DR. (RT. STA. 225+21.85)	29.7
(INCLUDES SCHNEIDER)	
TOTAL =	2952.5

ITEM NO. X6330103 REMOVE AND RE-ERECT TRAFFIC BARRIER TERMINAL, TYPE 1 SPECIAL (TANGENT)

FROM	LOCATION	TO	EACH
LT. STA. 112+13 TO LT. STA. 112+63		LT. STA. 109+42 TO LT. STA. 109+92	1
LT. BRICKLER RD	(LOCATION TO BE DETERMINED BY ENGINEER - SEE RADIUS GUARDRAIL DETAIL)		1
RT. BRICKLER RD.	(LOCATION TO BE DETERMINED BY ENGINEER - SEE RADIUS GUARDRAIL DETAIL)		1
LT. STA. 116+85 TO LT. STA. 117+35		RT. STA. 122+55 TO RT. STA. 123+05	1
LT. STA. 122+17 TO LT. STA. 122+67		RT. STA. 123+05 TO RT. STA. 123+55	1
LT. STA. 153+01 TO LT. STA. 153+51		LT. STA. 252+87.5 TO LT. STA. 253+37.5	1
LT. STA. 173+76 TO LT. STA. 174+26		RT. STA. 177+50 TO RT. STA. 178+00	1
LT. STA. 176+13.5 TO LT. STA. 176+63.5		LT. STA. 176+13.5 TO LT. STA. 176+63.5	1
TOTAL =			8

ITEM NO. C2002636 SHRUB, EUONYMUS ALATA COMPACTA (DWARF WINGED EUONYMUS), 3' HEIGHT, BALLED AND BURLAPPED

LOCATION	EACH
END OF SCHNEIDER (RT. STA. 223+85)	1
TOTAL =	1

ITEM NO. XX004671 SHRUB, FORSYTHIA X 'MEADOWLARK' 3' HEIGHT, BALLED AND BURLAPPED

LOCATION	EACH
END OF SCHNEIDER (RT. STA. 223+85)	2
TOTAL =	2

ITEM NO. X0321374 GRADE & SHAPE SHOULDERS

LOCATION	FOOT
TO BE DETERMINED BY THE ENGINEER	3500
(QUANTITY PROVIDED BY THE DISTRICT)	

REVISIONS	
NAME	DATE
GUARDRAIL/TMJ	02-08-05

ILLINOIS DEPARTMENT OF TRANSPORTATION

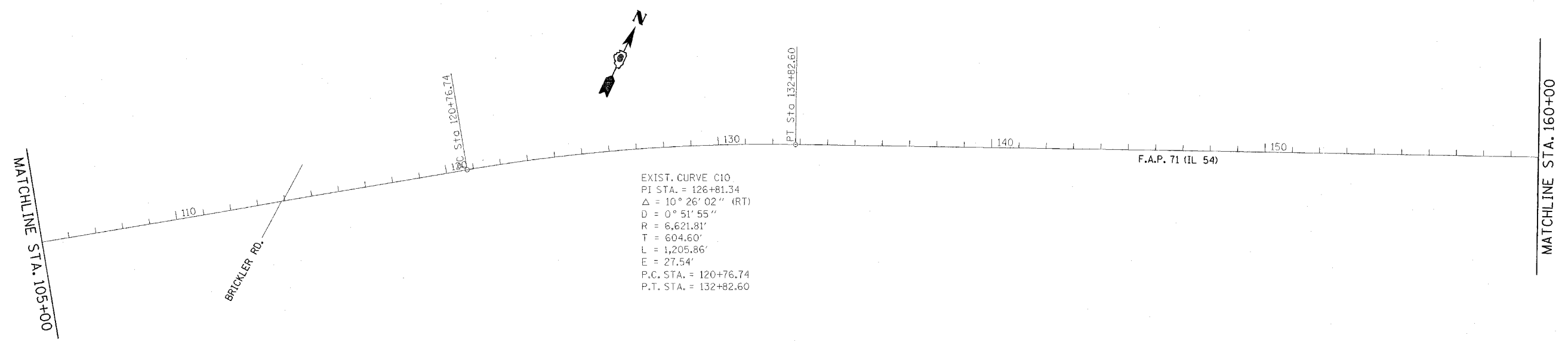
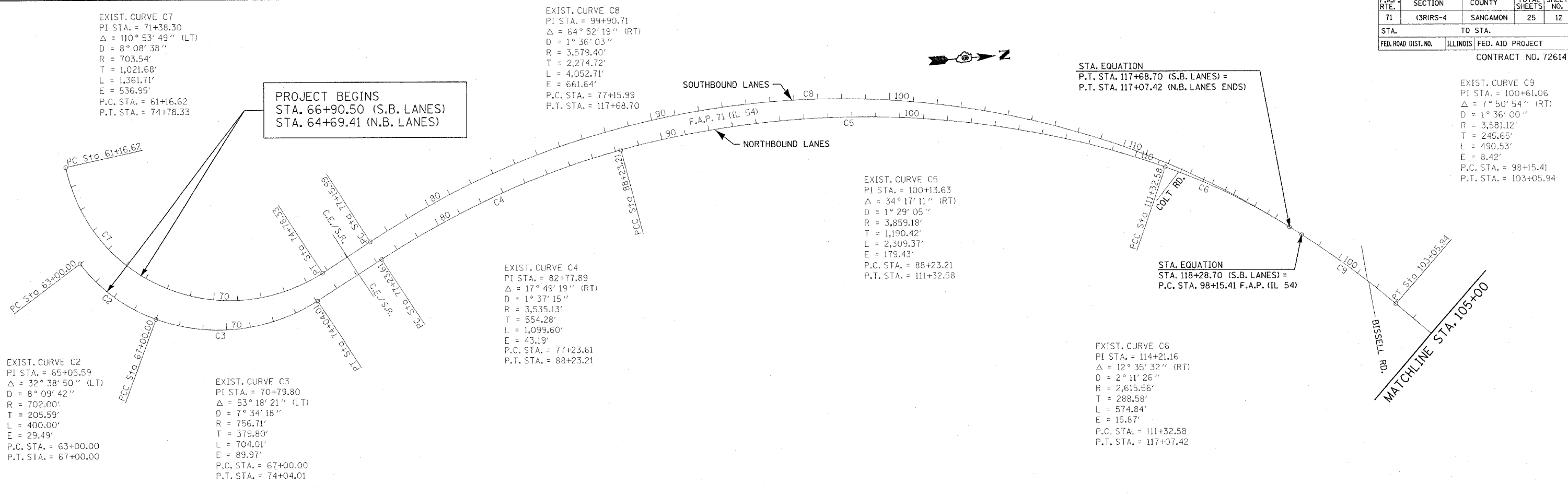
SCHEDULE OF QUANTITIES

SCALE: VERT. HORIZ. DATE 02-08-05

DRAWN BY TMJ CHECKED BY MEB

cs:\projects\ed52901\jdg-f.inl.12-20-04-schedules.dgn  
2/10/2005  
\*REF 01

F.A.P. RTE.	SECTION	COUNTY	TOTAL SHEETS	SHEET NO.
71	3R(RS-4)	SANGAMON	25	12
STA.		TO STA.		
FED. ROAD DIST. NO.		ILLINOIS	FED. AID PROJECT	
CONTRACT NO. 72614				



REVISIONS	
NAME	DATE
GUARDRAIL/TMJ	02-08-05

ILLINOIS DEPARTMENT OF TRANSPORTATION

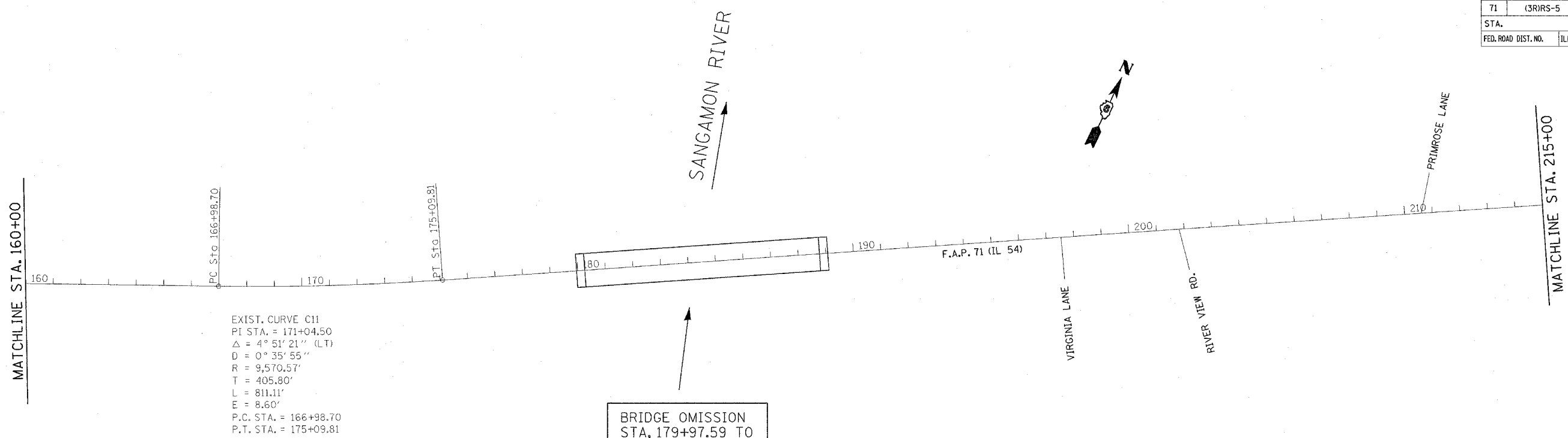
**ALIGNMENT LAYOUT**

SCALE: VERT.  
 HORIZ.  
 DATE 02-08-05

DRAWN BY TMJ  
 CHECKED BY MEB

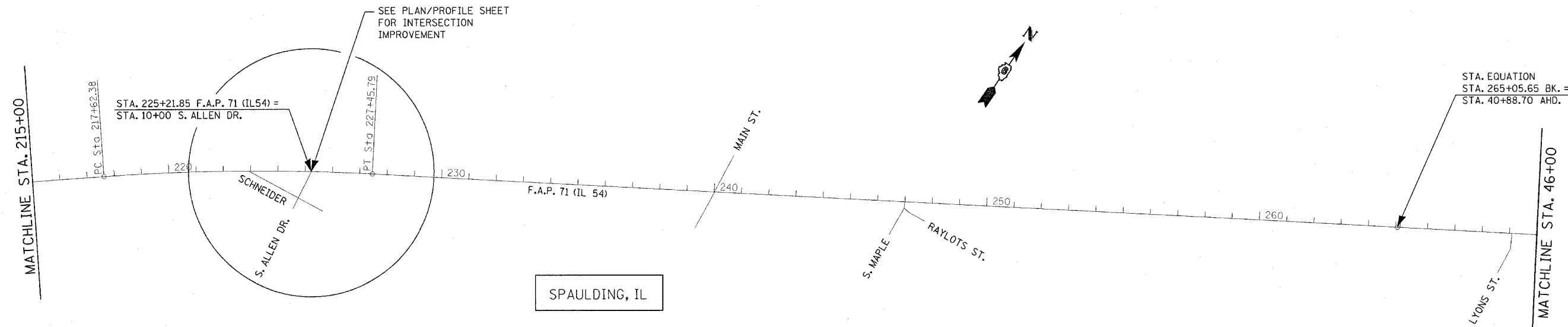
cr:\projects\ed52901\ldq-final\12-20-04\plans-200.dgn  
 2/10/2005  
 REF01

F.A.P. RTE.	SECTION	COUNTY	TOTAL SHEETS	SHEET NO.
71	(3R)RS-5	SANGAMON	25	13
STA.		TO STA.		
FED. ROAD DIST. NO.	ILLINOIS	FED. AID PROJECT		
CONTRACT NO. 72614				



EXIST. CURVE C11  
 PI STA. = 171+04.50  
 $\Delta = 4^\circ 51' 21''$  (LT)  
 $D = 0^\circ 35' 55''$   
 $R = 9,570.57'$   
 $T = 405.80'$   
 $L = 811.11'$   
 $E = 8.60'$   
 P.C. STA. = 166+98.70  
 P.T. STA. = 175+09.81

BRIDGE OMISSION  
 STA. 179+97.59 TO  
 STA. 189+09.27



STA. 225+21.85 F.A.P. 71 (IL54) =  
 STA. 10+00 S. ALLEN DR.

EXIST. CURVE C12  
 PI STA. = 222+54.68  
 $\Delta = 6^\circ 52' 46''$  (RT)  
 $D = 0^\circ 41' 58''$   
 $R = 8,190.59'$   
 $T = 492.30'$   
 $L = 983.42'$   
 $E = 14.78'$   
 P.C. STA. = 217+62.38  
 P.T. STA. = 227+45.79

SPAULDING, IL

STA. EQUATION  
 STA. 265+05.65 BK. =  
 STA. 40+88.70 AHD.

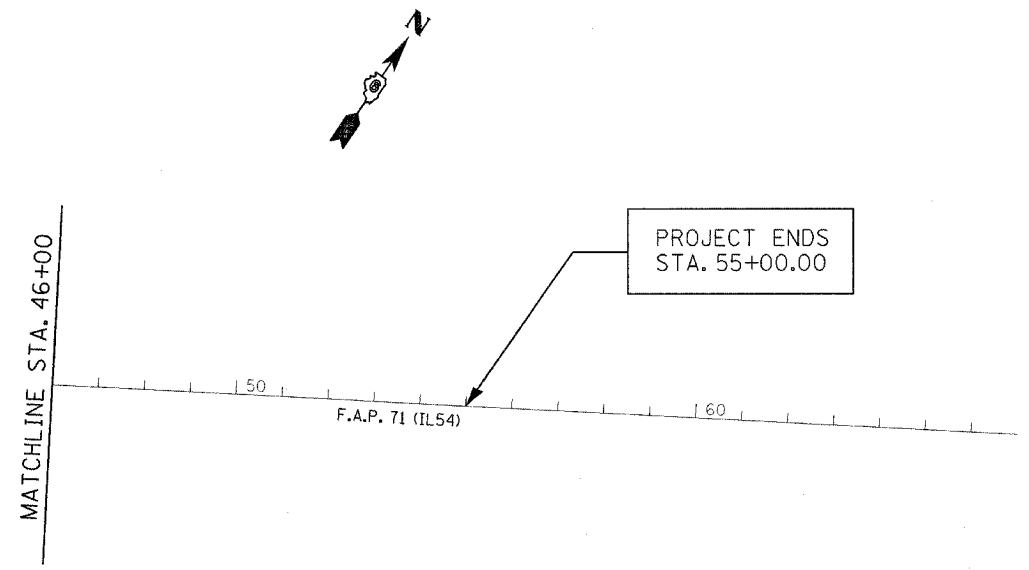
REVISIONS	
NAME	DATE
GUARDRAIL/TMJ	02-08-05

ILLINOIS DEPARTMENT OF TRANSPORTATION  
  
 ALIGNMENT LAYOUT

SCALE: VERT.      DRAWN BY    TMJ  
 HORIZ.              CHECKED BY    MEB  
 DATE    02-08-05

ct:\projects\ed52901\jdg-final\12-20-04\plans\_200.dgn  
 2/10/2005  
 \*REF01  
 PLANS\_200.DGN

F.A.P. RTE.	SECTION	COUNTY	TOTAL SHEETS	SHEET NO.
71	(3R)RS-5	SANGAMON	25	14
STA.		TO STA.		
FED. ROAD DIST. NO.	ILLINOIS	FED. AID PROJECT		
CONTRACT NO. 72614				



REVISIONS	
NAME	DATE
GUARDRAIL/TMJ	02-08-05

ILLINOIS DEPARTMENT OF TRANSPORTATION

ALIGNMENT LAYOUT

SCALE: VERT.      DRAWN BY    TMJ  
 HORIZ.              CHECKED BY    MEB  
 DATE 02-08-05

c:\projects\ed52901\jdg-f.msl.12-20-04\plans.200.dgn  
 2/10/2005  
 \*REF 01  
 PLANS 200.DGN

F.A.P. RTE.	SECTION	COUNTY	TOTAL SHEETS	SHEET NO.
71	13RIRS-5	SANGAMON	25	15
STA.		TO STA.		
FED. ROAD DIST. NO.		ILLINOIS FED. AID PROJECT		
CONTRACT NO. 72614				

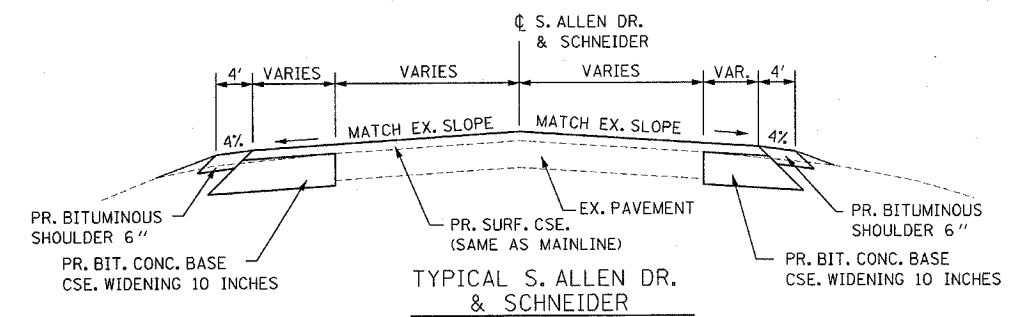
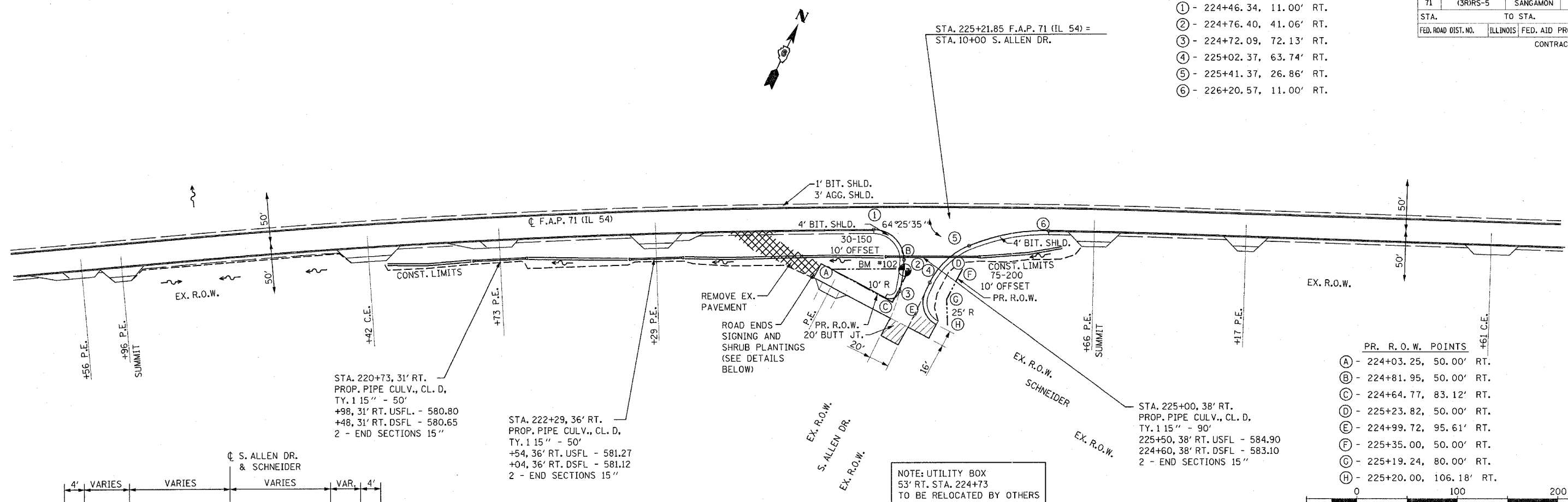
**RADIUS STAKING CONTROL POINTS**

- ① - 224+46.34, 11.00' RT.
- ② - 224+76.40, 41.06' RT.
- ③ - 224+72.09, 72.13' RT.
- ④ - 225+02.37, 63.74' RT.
- ⑤ - 225+41.37, 26.86' RT.
- ⑥ - 226+20.57, 11.00' RT.

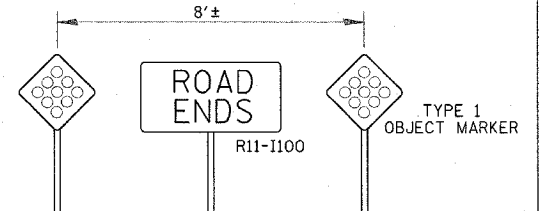
PLAN	DATE
SURVEYED	
DESIGNED	
CHECKED	
BY	
DATE	

PROFILE	DATE
SURVEYED	
DESIGNED	
CHECKED	
BY	
DATE	

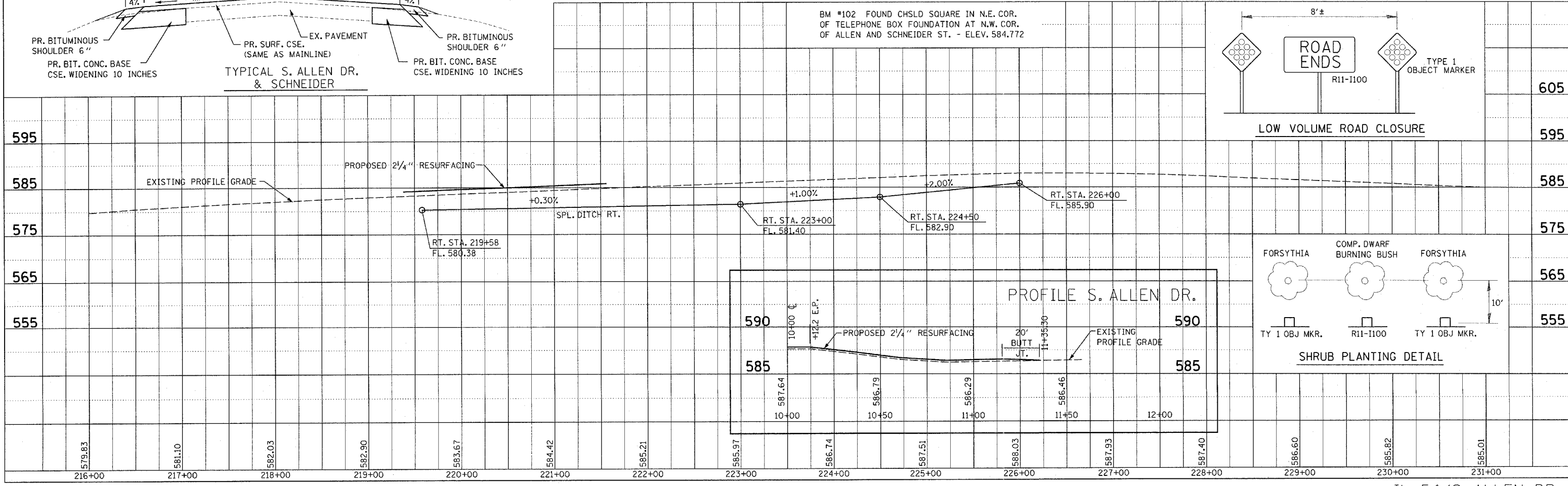
projects\ed52981\del\_f.mal.12-20-04\allendr.dgn  
2/10/2005  
REF B1



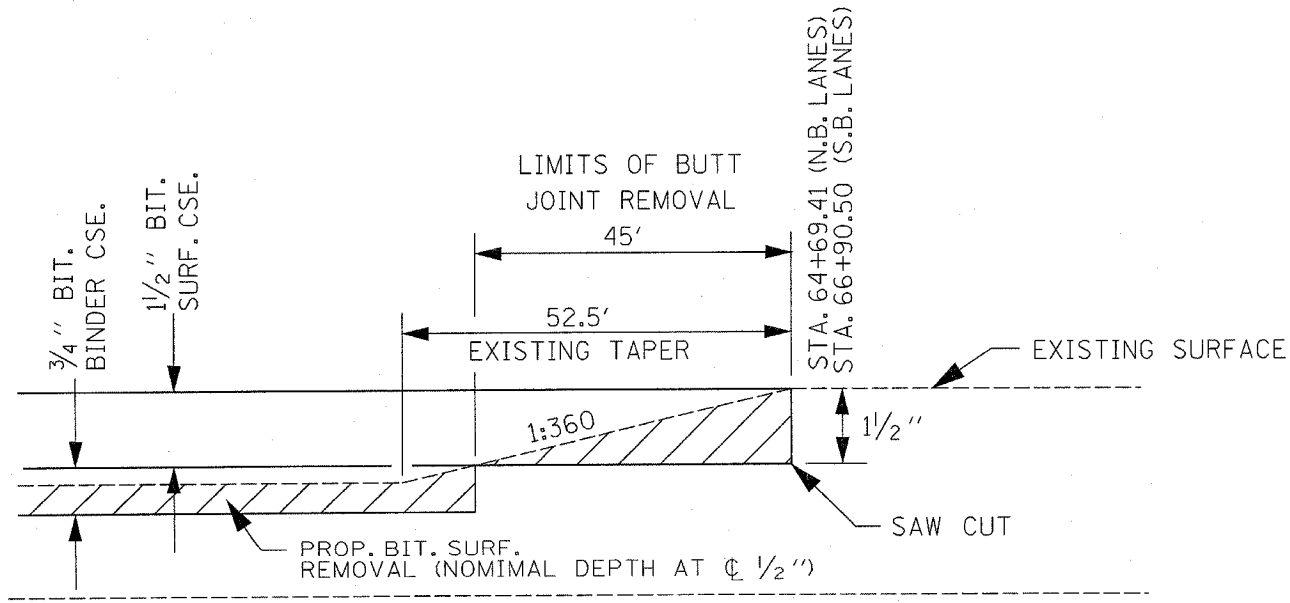
BM #102 FOUND CHSLD SQUARE IN N.E. COR. OF TELEPHONE BOX FOUNDATION AT N.W. COR. OF ALLEN AND SCHNEIDER ST. - ELEV. 584.772



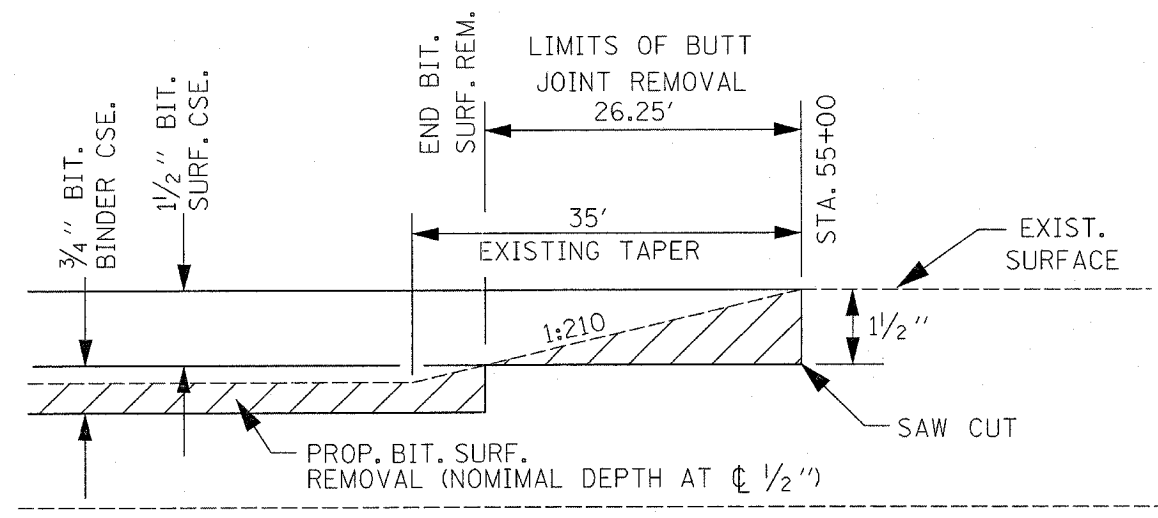
LOW VOLUME ROAD CLOSURE



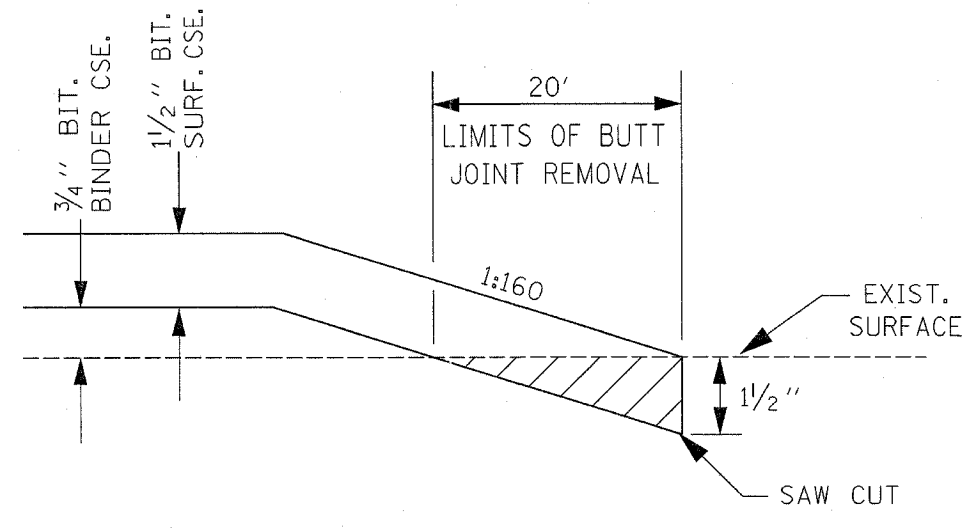
F.A.P. RTE.	SECTION	COUNTY	TOTAL SHEETS	SHEET NO.
71	(3R)RS-5	SANGAMON	25	16
STA.		TO STA.		
FED. ROAD DIST. NO.	ILLINOIS	FED. AID PROJECT		
CONTRACT NO. 72614				



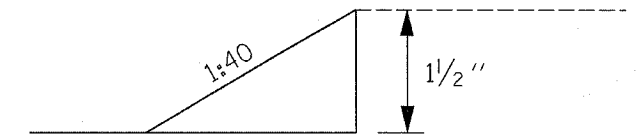
F.A.P. 71 (IL 54)  
 STA. 64+69.41 TO STA. 65+14.41 (N.B. LANES)  
 STA. 66+90.50 TO STA. 67+35.50 (S.B. LANES)



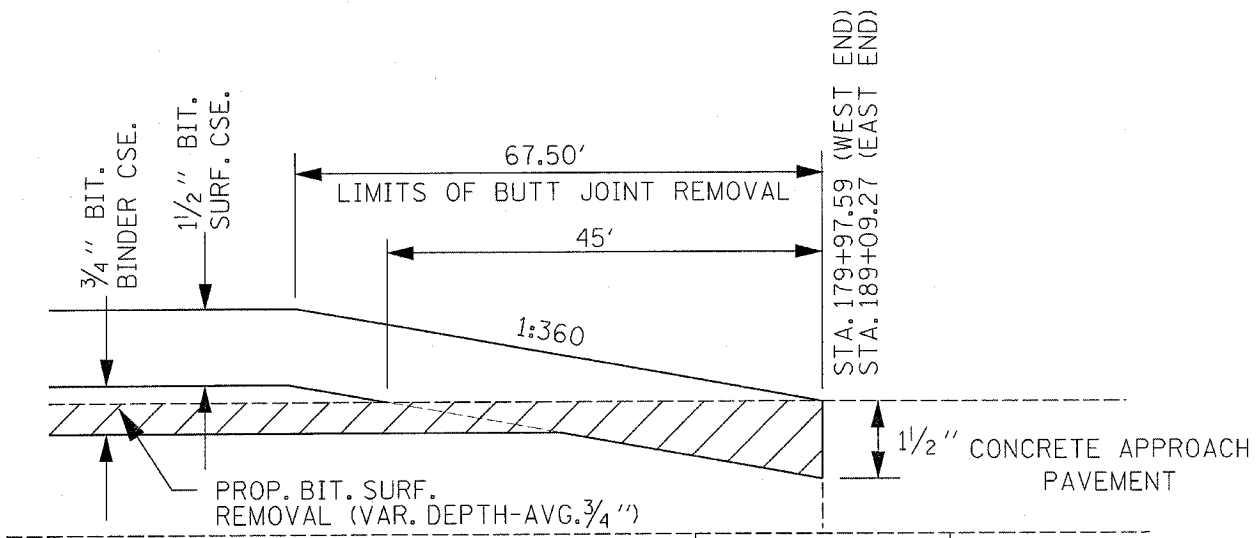
F.A.P. 71 (IL 54)  
 STA. 54+73.75 TO STA. 55+00.00



S. ALLEN DR. & SCHNEIDER



TEMPORARY RAMP DETAIL  
 STA. 64+69.91 TO STA. 64+74.91 (NB)  
 STA. 66+90.50 TO STA. 66+95.50 (SB)  
 STA. 179+92.59 TO STA. 179+97.59  
 STA. 189+09.27 TO STA. 189+14.27  
 STA. 54+95.00 TO STA. 55+00



F.A.P. 71 (IL 54)  
 STA. 179+30.09 TO STA. 179+97.59  
 STA. 189+09.27 TO STA. 189+76.77

REVISIONS	
NAME	DATE
GUARDRAIL/TMJ	02-08-05

ILLINOIS DEPARTMENT OF TRANSPORTATION

**BUTT JOINT DETAILS**

SCALE: VERT. HORIZ. DATE 02-08-05

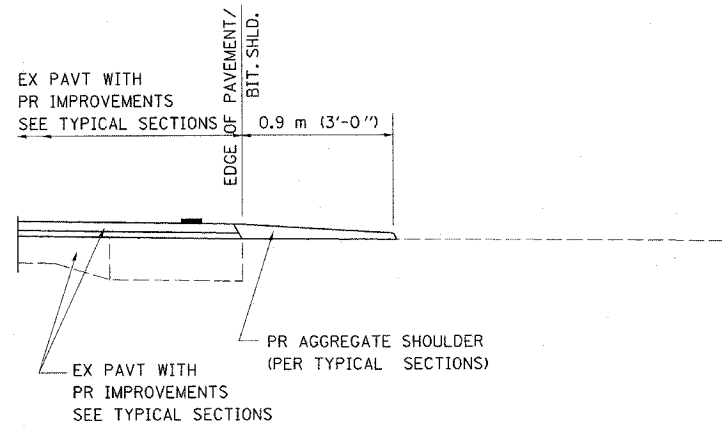
DRAWN BY TMJ  
 CHECKED BY MEB

c:\projects\ed52901\jda.final.12-20-04\buttjointdetail.dgn  
 2/10/2005  
 \*REF01

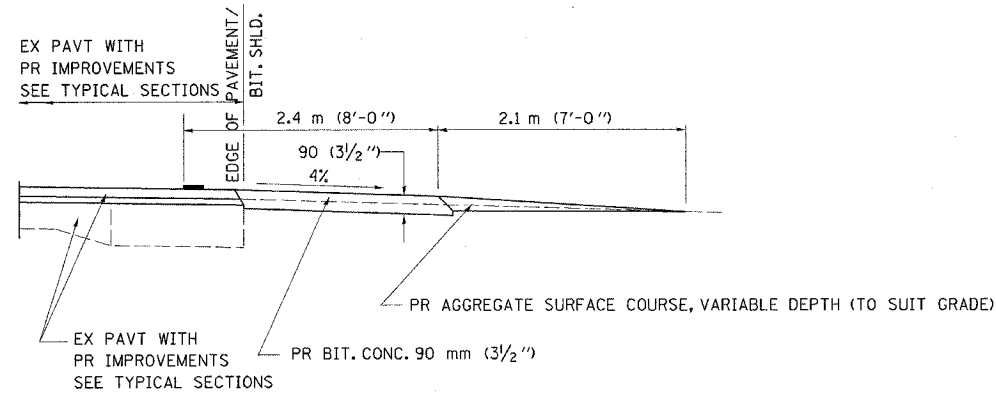


F.A.P. RTE.	SECTION	COUNTY	TOTAL SHEETS	SHEET NO.
71	(3)RIS-5	SANGAMON	25	17
STA.		TO STA.		
FED. ROAD DIST. NO.	ILLINOIS	FED. AID PROJECT		

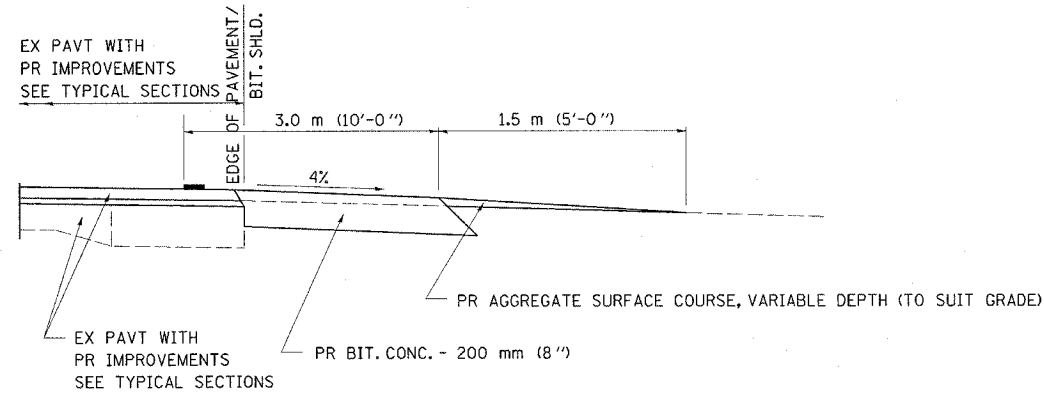
CONTRACT NO. 72614



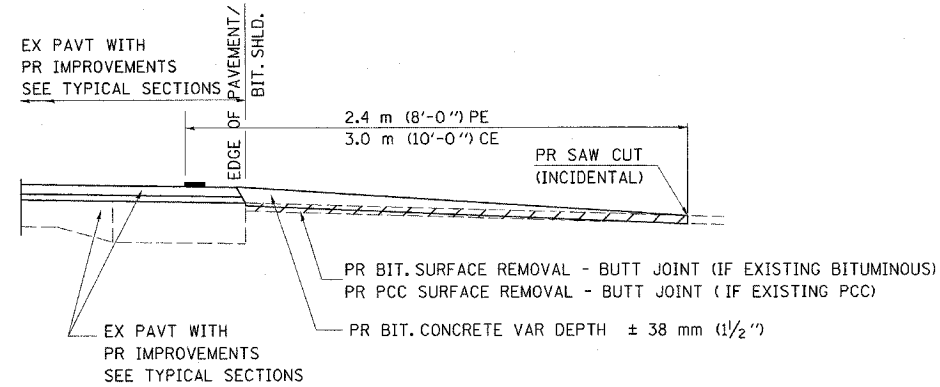
**SECTION A-A FOR EX EARTH/AGGREGATE FE**



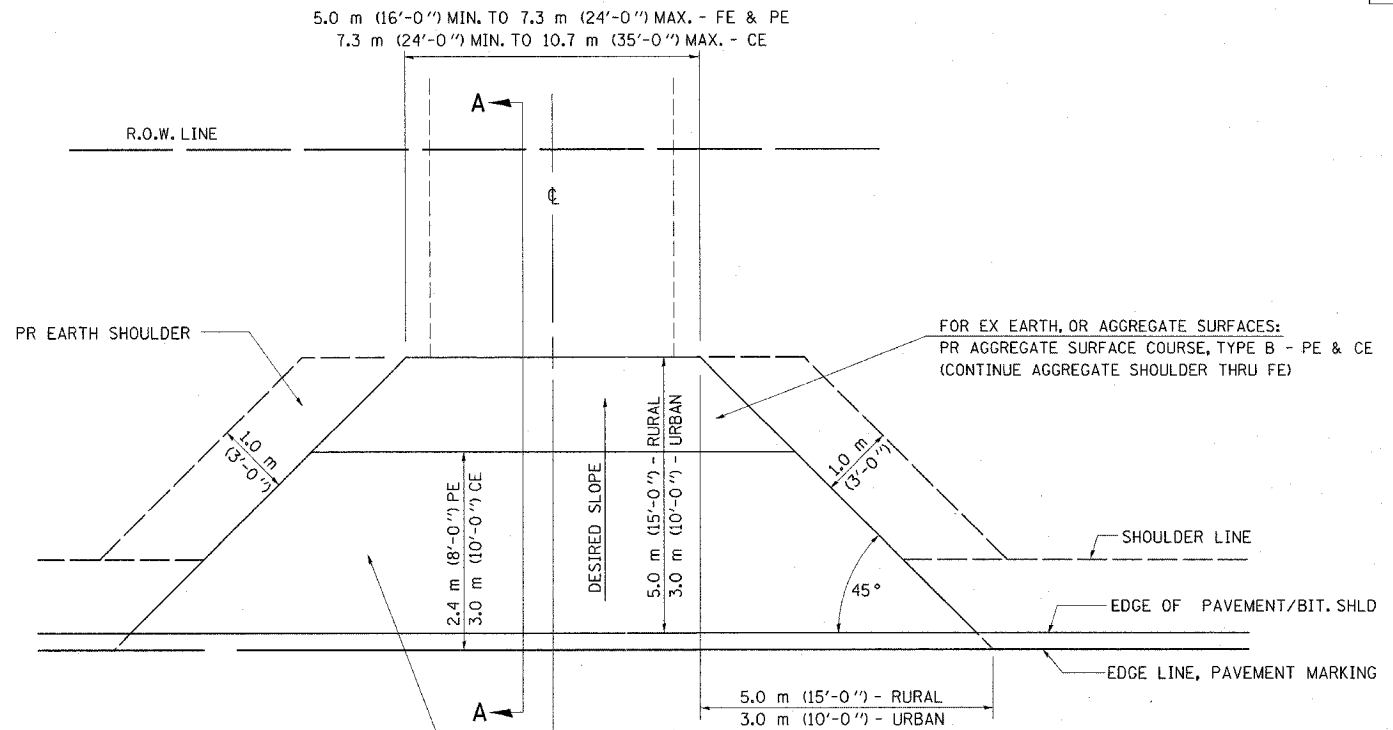
**SECTION A-A FOR EX EARTH/AGGREGATE PE**



**SECTION A-A FOR EX EARTH/AGGREGATE CE & SIDE ROAD**



**SECTION A-A FOR EX BITUMINOUS/PC CONCRETE PE, CE & SIDE ROAD**



FOR EX EARTH OR AGGREGATE SURFACES:  
 PR BIT SURFACE REMOVAL (IF APPLICABLE)  
 PR AGGREGATE SHOULDER THRU - FE  
 PR BITUMINOUS CONCRETE 90 mm (3 1/2") - PE  
 PR BITUMINOUS CONCRETE 200mm (8") - CE

FOR EX BITUMINOUS CONCRETE SURFACES:  
 PR BITUMINOUS SURFACE REMOVAL-BUTT JOINT

FOR EX PCC SURFACES:  
 PR PCC SURFACE REMOVAL-BUTT JOINT

**GENERAL NOTES:**

THE RESIDENT ENGINEER WILL DETERMINE THE EXACT TYPE OF IMPROVEMENT TO BE COMPLETED FOR ALL ENTRANCES, SIDEROADS AND MAILBOX TURNOUTS ON THIS PROJECT.

THE PLAN DETAILS AND SCHEDULES SHOULD BE USED AS A GUIDE FOR THE ENGINEER TO IMPLEMENT THE FINAL DESIGN. THE ENGINEER MAY DECIDE TO SALVAGE PORTIONS OF THE EXISTING ENTRANCE PAVEMENT STRUCTURE; THEREFORE, REDUCING PAY ITEM QUANTITIES. NO ADDITIONAL PAYMENT WILL BE ALLOWED FOR THIS REDUCTION IN QUANTITIES.

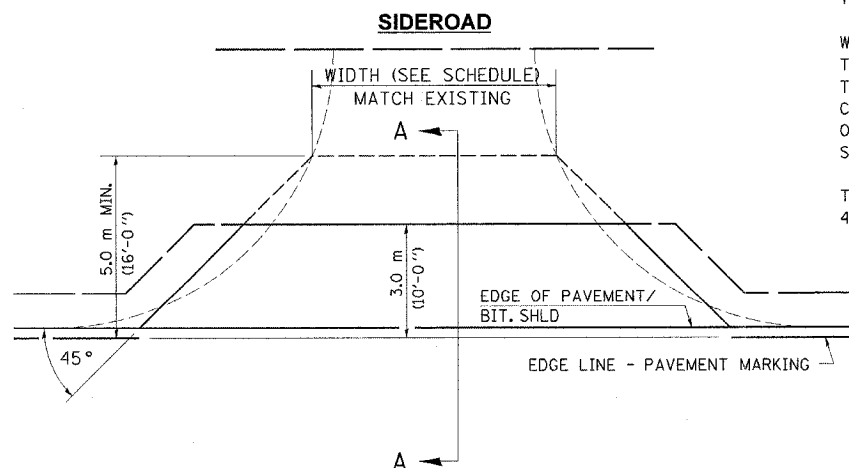
ANY WORK THE ENGINEER REQUIRES WHICH IS NOT COVERED BY A PAY ITEM CONTAINED IN THE PLANS WILL BE PAID FOR IN ACCORDANCE WITH ARTICLE 109.04 OF THE STANDARD SPECIFICATIONS.

BITUMINOUS CONCRETE REQUIRED TO CONSTRUCT THE ENTRANCES SHALL BE IN ACCORDANCE WITH THE APPLICABLE PORTIONS OF SECTION 406 AND 408 OF THE STANDARD SPECIFICATIONS AND AS DIRECTED BY THE ENGINEER.

WHEN THE BITUMINOUS CONCRETE PROPOSED FOR THE IMPROVEMENT IS THICKER THAN 75 mm (3 INCHES) AND REQUIRE PLACEMENT IN MORE THAN ONE LIFT. THE BOTTOM LIFT(S) SHALL MEET THE REQUIREMENTS OF BITUMINOUS BASE COURSE IN SECTION 406 OF THE STANDARD SPECIFICATIONS AND THE TOP LIFT OF 50 mm (2 INCHES) SHALL MEET THE REQUIREMENTS OF BITUMINOUS CONCRETE SURFACE COURSE, SUPERPAVE.

THIS WORK WILL BE PAID FOR IN ACCORDANCE WITH SECTIONS 351, 358, 408, 423 AND 440 OF THE STANDARD SPECIFICATIONS.

ALL DIMENSIONS ARE IN MILLIMETERS (INCHES) UNLESS OTHERWISE SHOWN.



NOTE: IF BIT. SHLDS ARE PROPOSED THEY SHOULD NOT EXTEND THROUGH SIDEROADS

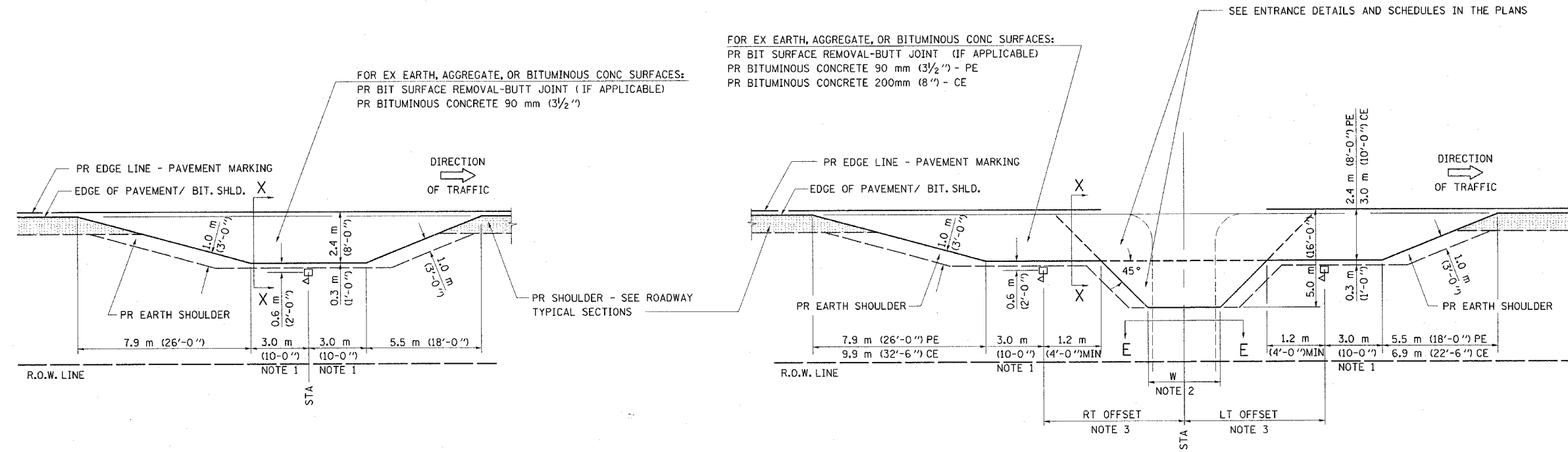
REVISIONS	
NAME	DATE
JCN	2/19/03

ILLINOIS DEPARTMENT OF TRANSPORTATION  
**DISTRICT SIX**  
**DETAILS FOR RURAL / URBAN**  
**ENTRANCE, MAILBOX TURNOUT**  
**& SIDEROADS**  
**W / O CONCRETE GUTTER**  
**(PPP - PROJECTS)**

SCALE: VERT.      DRAWN BY CADD  
 HORIZ.              CHECKED BY JCN  
 DATE: FEBRUARY 23, 1999

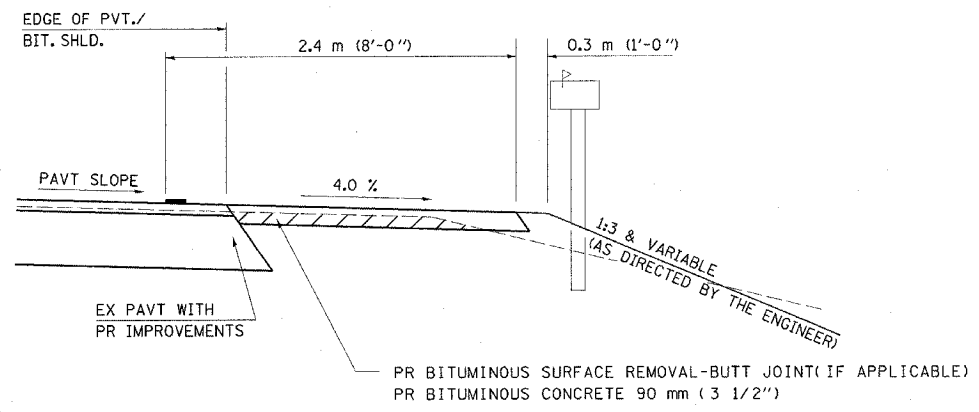
c:\projects\ed52901\jdg-final-12-20-04\ent3p.dgn  
 2/10/2005  
 REF01

## DETAILS OF MAILBOX TURNOUTS



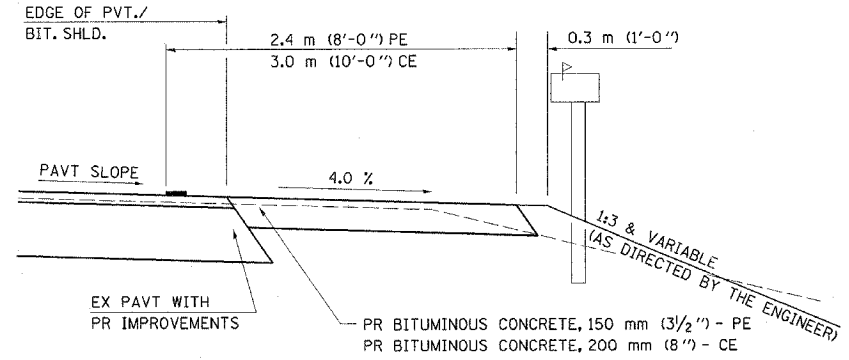
**PLAN - MAILBOX TURNOUTS**

**PLAN - COMBINED MAILBOX TURNOUT WITH TRAILING OR LEADING ENTRANCE**



**SECTION X-X THRU MAILBOX TURNOUT**  
 ALSO APPLIES TO MAILBOX TURNOUTS COMBINED WITH EX EARTH, AGGREGATE, OR BITUMINOUS PE & FE

(DETAIL APPLIES WHEN M.B. TURNOUT DOES NOT EXIST.  
 IF EXISTING, TREAT SAME AS ENTRANCE.)



**SECTION X-X THRU MAILBOX TURNOUT**  
 COMBINED WITH EX BITUMINOUS CONC & PC CONC PE & CE

(DETAIL APPLIES WHEN M.B. TURNOUT DOES NOT EXIST.  
 IF EXISTING, TREAT SAME AS ENTRANCE.)

- NOTE 1 IF MORE THAN ONE MAILBOX IS PRESENT, DIMENSION FROM CENTER OF END MAILBOX.
- NOTE 2 FOR ENTRANCE LAYOUT DIMENSIONS AND SECTIONS A-A & E-E REFER TO THE SCHEDULES IN THE PLANS.
- NOTE 3 BOTH LT OR RT OFFSETS FOR MAILBOX SHOWN USE OFFSET DIMENSION PER SCHEDULE AND REFER TO LAYOUT SHOWN ON THE PLAN.

ALL DIMENSIONS ARE IN MILLIMETERS (INCHES)  
 UNLESS OTHERWISE SHOWN.

SHEET 2 OF 4

REVISIONS	
NAME	DATE
JCN	2/19/03

ILLINOIS DEPARTMENT OF TRANSPORTATION  
**DISTRICT SIX**  
**DETAILS FOR RURAL / URBAN**  
**ENTRANCE, MAILBOX TURNOUT**  
**& SIDEROADS**  
**W / O CONCRETE GUTTER**  
**(PPP - PROJECTS)**

VERT. SCALE: HORIZ. SCALE: DATE: FEBRUARY 23, 1999  
 DRAWN BY CADD  
 CHECKED BY JCN

c:\projects\ed52901\jdg.fina.12-20-04\ent3p.dgn  
 2/10/2005  
 \*REF:01

CONTRACT NO. 72614

ENTRANCE IMPROVEMENT SCHEDULE FOR RURAL / URBAN "PPP" PROJECTS

LOCATION (LT / RT) (STA) ( + )	TYPE OF ENTRANCE (FE / PE / CE / MB) (RURAL / URBAN)	EX MATERIAL TYPE (EARTH / AGG. / BIT. / P.C.C.)	WIDTH FOOT	RT OFFSET FOOT	LT OFFSET FOOT	LENGTH (FROM EDGE OF PVT/ BIT SHLD TO LIMITS OF IMPROVEMENT) FOOT	PR BIT. CONC. THICKNESS INCH	BIT. SURF. REM. - BUTT JOINT SQ. YD.	P.C.C. SURF. REM. - BUTT JOINT SQ. YD.	PREP OF BASE SQ. YD.	AGG. BASE REPAIR TON	AGGREGATE SURFACE COURSE TY - B TON	BIT (P.C.) TON	AGG (P.C.) TON	INCIDENTAL BIT. SURF. TON
* LT. STA. 76+00 (S.B.)	C.E./S.R.	P.C.C.	95			10	2.25		116.7	116.7			0.04	0.23	14.7
* RT. STA. 76+00 (N.B.)	C.E./S.R.	P.C.C.	82			10	2.25		102.2	102.2			0.04	0.20	12.9
LT. STA. 82+09 (S.B.)	F.E	EARTH													
RT. STA. 91+90 (N.B.)	F.E	EARTH													
RT. STA. 111+92 (N.B.)	S.R.	BIT.	115			10	2.25	138.9		138.9			0.05	0.28	17.5
LT. STA. 113+66 (S.B.)	F.E	EARTH													
LT. STA. 101+53	S.R.	BIT.	57			9	2.25	66.0		66.0			0.03	0.13	8.3
RT. STA. 101+60	S.R.	BIT.	50			9	2.25	59.0		59.0			0.02	0.12	7.4
RT. STA. 103+32	C.E.	AGG.	35			14	8			76.2		0.90			24.2
RT. STA. 104+88	C.E. & M.B.	AGG.	35	26.5		14	8			76.2		0.90			35.8
RT. STA. 113+87	S.R.	BIT.	54			9	2.25	63.0		63.0			0.03	0.13	7.9
LT. STA. 113+93	S.R.	BIT.	81			9	2.25	90.0		90.0			0.04	0.18	11.3
RT. STA. 118+24	P.E. & M.B.	BIT.	24		16	7	2.25	24.1		24.1			0.01	0.05	6.0
RT. STA. 119+54	P.E. & M.B.	AGG.	16	19		14	3.5			46.7		1.10			9.2
RT. STA. 123+88	P.E. & M.B.	P.C.C.	24	16		7	2.25	24.1		24.1			0.01	0.05	6.6
RT. STA. 129+36	P.E. & M.B.	BIT.	24		16	7	2.25	24.1		24.1			0.01	0.05	6.0
RT. STA. 130+10	F.E	AGG.													
RT. STA. 135+26	F.E	EARTH													
RT. STA. 148+26	F.E	AGG.													
RT. STA. 178+29	F.E	EARTH													
RT. STA. 197+45	S.R.	BIT.	29			9	2.25	38.0		38.0			0.02	0.08	4.8
RT. STA. 201+82	S.R.	BIT.	90			9	2.25	99.0		99.0			0.04	0.20	12.5
RT. STA. 204+17	P.E.	AGG.	24			14	3.5			59.1		1.50			6.9
RT. STA. 206+48	P.E. & M.B.	AGG.	16		19	14	3.5			46.7		1.10			8.6
RT. STA. 210+43	P.E. & M.B.	BIT.	24	16		7	2.25	24.1		24.1			0.01	0.05	6.6
LT. STA. 210+61	S.R.	BIT.	69			9	2.25	78.0		78.0			0.03	0.16	9.8
RT. STA. 212+14	P.E. & M.B.	AGG.	16	19		14	3.5			46.7		1.10			9.2
RT. STA. 213+63	P.E. & M.B.	AGG.	24		23	14	3.5			59.1		1.50			9.9
RT. STA. 216+56	P.E. & M.B.	BIT.	24	16		7	2.25	24.1		24.1			0.01	0.05	6.6
RT. STA. 216+96	P.E.	EARTH	16			14	3.5			46.7		1.10			5.6
RT. STA. 219+42	C.E.	AGG.	35			14	8			76.2		0.90			24.2
RT. STA. 220+73	P.E. & M.B.	BIT.	24	16		7	2.25	24.1		24.1			0.01	0.05	6.6
RT. STA. 222+29	P.E. & M.B.	AGG.	24		23	14	3.5			59.1		1.50			9.9
(FOR SCHNEIDER AND S. ALLEN DR. - SEE PLAN/PROFILE SHEET)															
RT. STA. 226+66	P.E.	AGG.	24			14	3.5			59.1		1.50			6.9
RT. STA. 228+17	P.E.	EARTH	16			14	3.5			46.7		1.10			5.6
RT. STA. 230+61	C.E.	BIT.	35			9	2.25	44.0		44.0			0.02	0.09	5.5
RT. STA. 236+12	C.E.	BIT.	35			9	2.25	44.0		44.0			0.02	0.09	5.5
RT. STA. 237+08	P.E.	AGG.	22			14	3.5			56.0		1.40			6.6
LT. STA. 240+00	S.R.	BIT.	82			9	2.25	91.0		91.0			0.04	0.18	11.5
** RT. STA. 240+00	S.R.	BIT.	136			9	2.25	145.0		145.0			0.06	0.29	18.3
RT. STA. 241+66	P.E.	BIT.	24			7	2.25	24.1		24.1			0.01	0.05	3.0
RT. STA. 242+86	P.E. & M.B.	AGG.	18		20	14	3.5			49.8		1.20			8.9
RT. STA. 246+69	S.R.	BIT.	66			9	2.25	75.0		75.0			0.03	0.15	9.5
RT. STA. 253+17	P.E. & M.B.	AGG.	22	22		14	3.5			56.0		1.40			10.2
RT. STA. 254+31	P.E. & M.B.	AGG.	18	20		14	3.5			49.8		1.20			9.5
CONTINUED															

COLT RD.  
BISSELL RD.  
BISSELL RD.  
BRICKLER RD.  
BRICKLER RD.  
VIRGINIA LANE  
RIVERVIEW RD.  
PRIMROSE LANE  
MAIN ST.  
MAIN ST.  
RAYLOTS ST.

SHEET 3 OF 4

- \* ENTRANCE TO INDUSTRIAL SITE
- \*\* INCLUDES P.E. ENTR. RT. STA. 240+54 (BIT.)
- ALL FIELD ENTRANCES (NO WORK) CARRY AGGREGATE SHOULDER THROUGH ENTRANCE (SEE ENTRANCE DETAIL) - SHOWN FOR INFORMATION

REVISIONS	
NAME	DATE
JCN	2/19/03

ILLINOIS DEPARTMENT OF TRANSPORTATION  
**DISTRICT SIX**  
**SCHEDULES FOR RURAL / URBAN**  
**ENTRANCE, MAILBOX TURNOUT**  
**& SIDEROADS**  
**W / O CONCRETE GUTTER**  
**(PPP - PROJECTS)**  
SCALE: VERT. HORIZ.  
DATE: FEBRUARY 23, 1999  
DRAWN BY CADD  
CHECKED BY JCN

c:\projects\ed52901\ed52901.dwg, final\_12-20-04\ent3p.dgn 2/10/2005 \*REF 01

ENTRANCE IMPROVEMENT SCHEDULE FOR RURAL / URBAN "PPP" PROJECTS

LOCATION	TYPE OF ENTRANCE	EX MATERIAL TYPE	WIDTH	RT OFFSET	LT OFFSET	LENGTH (FROM EDGE OF PVT/ BIT SHLD TO LIMITS OF IMPROVEMENT)	PR BIT. CONC. THICKNESS	BIT. SURF. REM. - BUTT JOINT	P. C. C. SURF. REM. - BUTT JOINT	PREP OF BASE	AGG. BASE REPAIR	AGGREGATE SURFACE COURSE TY - B	BIT (P. C.)	AGG (P. C.)	INCIDENTAL BIT. SURF.
(LT / RT) (STA) ( + )	(FE / PE / CE / MB) (RURAL / URBAN)	EARTH / AGG. / BIT. / P. C. C.)	FOOT	FOOT	FOOT	FOOT	INCH	SQ. YD.	SQ. YD.	SQ. YD.	TON	TON	TON	TON	TON
RT. STA. 256+29	P.E.	EARTH	16			14	3.5			46.7		1.10			5.6
RT. STA. 257+43	P.E. & M.B.	AGG.	16		19	14	3.5			46.7		1.10			8.6
RT. STA. 259+72	P.E. & M.B.	AGG.	16		19	14	3.5			46.7		1.10			8.6
RT. STA. 261+32	P.E. & M.B.	AGG.	20		21	14	3.5			52.9		1.30			9.2
RT. STA. 262+90	P.E.	AGG.	22			14	3.5			56.0		1.40			6.6
RT. STA. 45+13	S.R.	BIT.	55			9	2.25	64.0		64.0			0.03	0.13	8.1
ENTR. @ SCHNEIDER RT. STA. 224+00	P.E.	AGG.	18			8	3.5			23.1		1.20			5.9
TOTAL =								1,263.6	218.9	2,664.9	--	26.6	0.61	2.99	442.6

LYONS ST.

SHEET 4 OF 4

REVISIONS	
NAME	DATE
JCN	2/19/03

ILLINOIS DEPARTMENT OF TRANSPORTATION  
**DISTRICT SIX**  
**SCHEDULES FOR RURAL / URBAN**  
**ENTRANCE, MAILBOX TURNOUT**  
**& SIDEROADS**  
**W / O CONCRETE GUTTER**  
**(PPP - PROJECTS)**

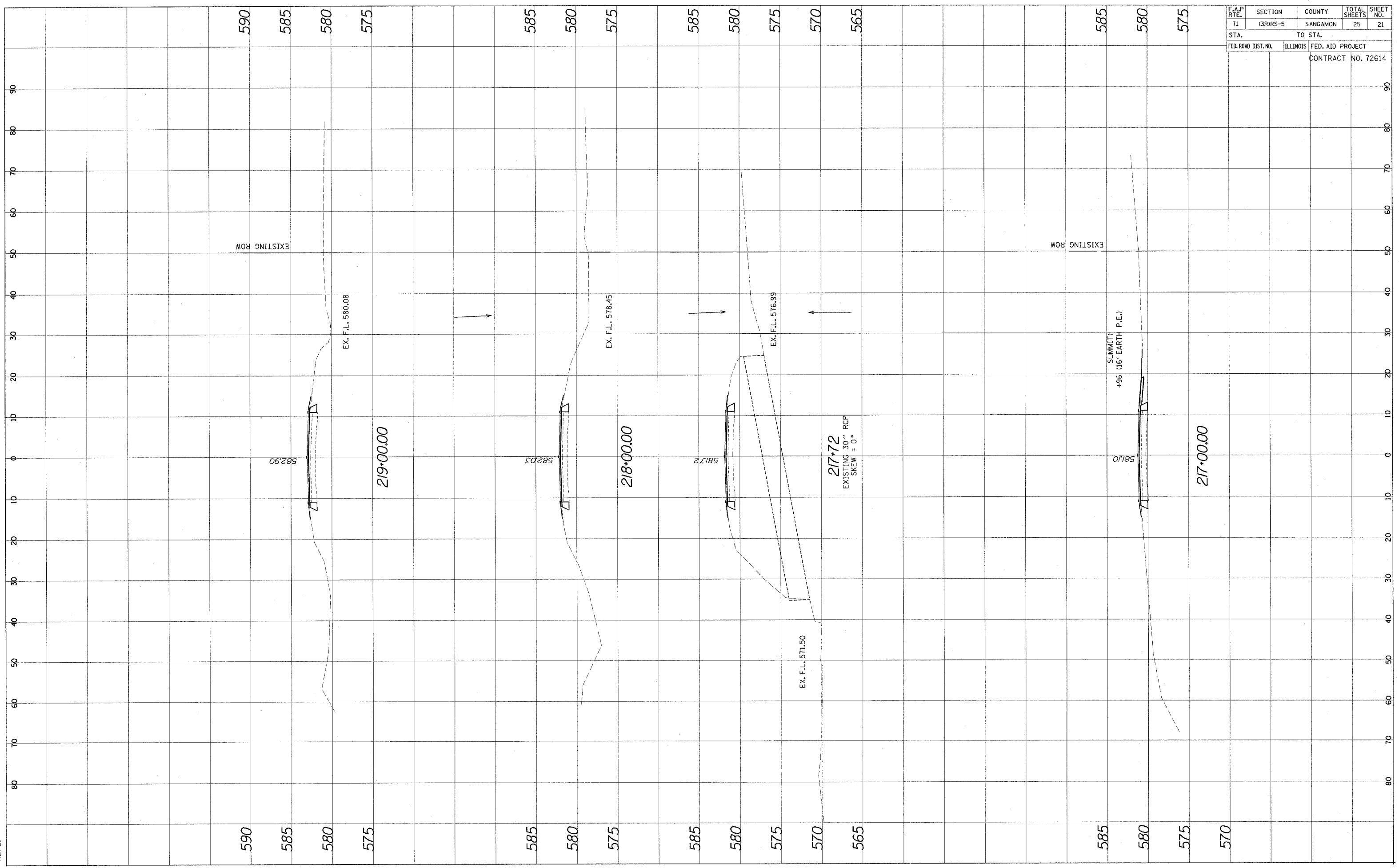
SCALE: VERT.      DRAWN BY CADD  
HORIZ.              CHECKED BY JCN  
DATE: FEBRUARY 23, 1999

ct:\projects\ed52901\jdc-finol.12-20-04\ent3p.dgn  
2/10/2005  
\*REF01

SURVEY PLOTTED  
 NOTE BOOK TEMPLATE  
 AREAS CHECKED

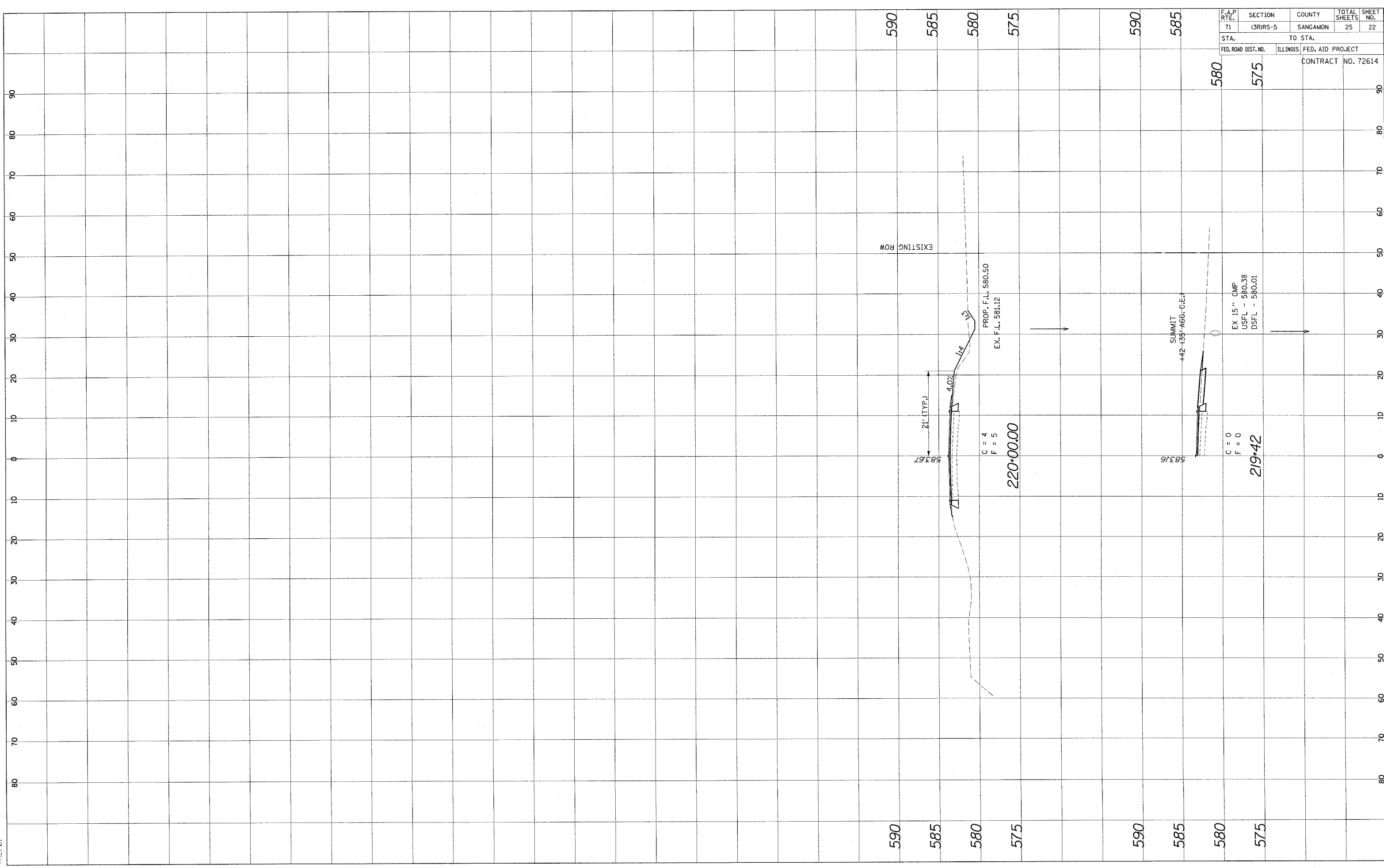
SURVEY PLOTTED  
 NOTE BOOK TEMPLATE  
 AREAS CHECKED

F.A.P. NO.	SECTION	COUNTY	TOTAL SHEETS	SHEET NO.
71	(3R)RS-5	SANGAMON	25	21
STA.		TO STA.		
FED. ROAD DIST. NO.		ILLINOIS FED. AID PROJECT		
CONTRACT NO. 72614				



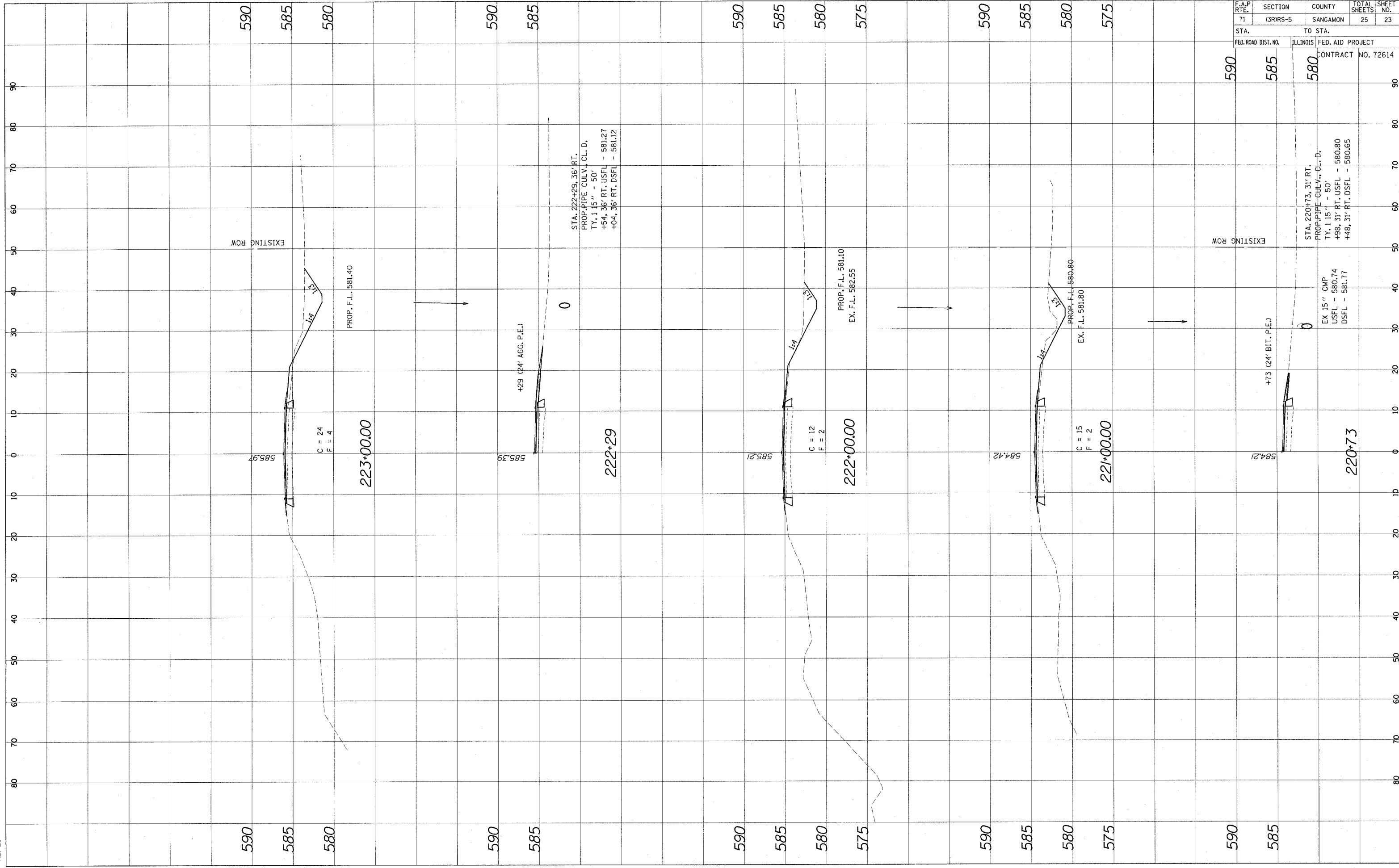
SURVEY PLOTTED  
 NOTE BOOK TEMPLATE  
 AREAS CHECKED  
 NO.

c:\projects\ed52901\jda\_final\2 SURVEY PLOTTED  
 2/10/2005 11:00 AM ATTORNEY - XS.DGN  
 AREAS CHECKED  
 NO.



F.A.P. RTE.	SECTION	COUNTY	TOTAL SHEETS	SHEET NO.
71	13RDRS-5	SANGAMON	25	22
STA.		TO STA.		
FED. ROAD DIST. NO.		ILLINOIS	FED. AID PROJECT	
		CONTRACT NO. 72614		

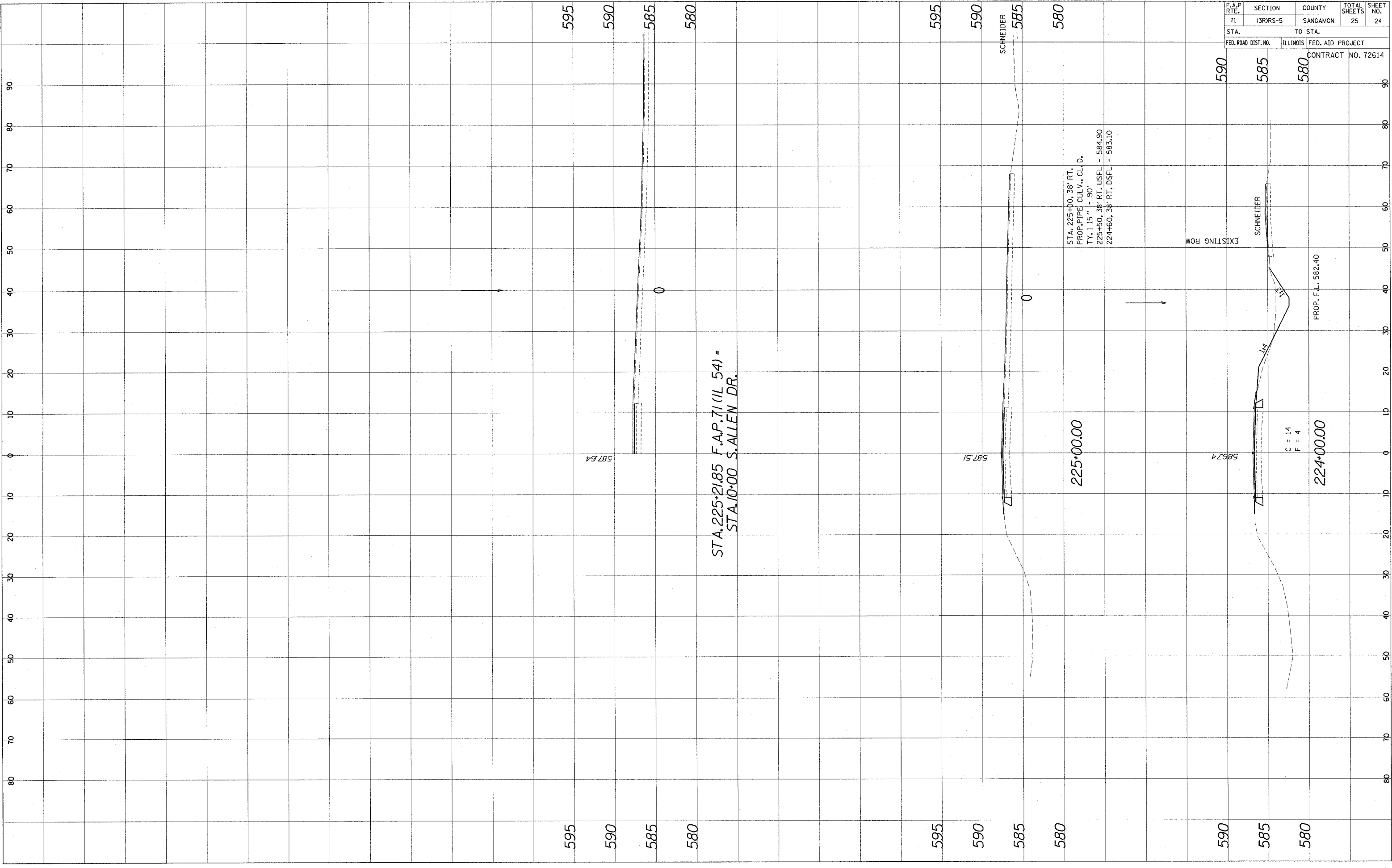
ca:\projects\es52901\jdk\_f\final\2005\2/10/2005\REF01.dwg  
 PROJECTED  
 TEMPLATE  
 AREAS CHECKED  
 NO. AREAS CHECKED  
 NO. AREAS CHECKED



e:\projects\ed52901\jdg\_final.12-28-04.dwg  
 2/10/2005  
 #REF01

SURVEYED  
 SURVEY  
 NOTE BOOK  
 NO. \_\_\_\_\_

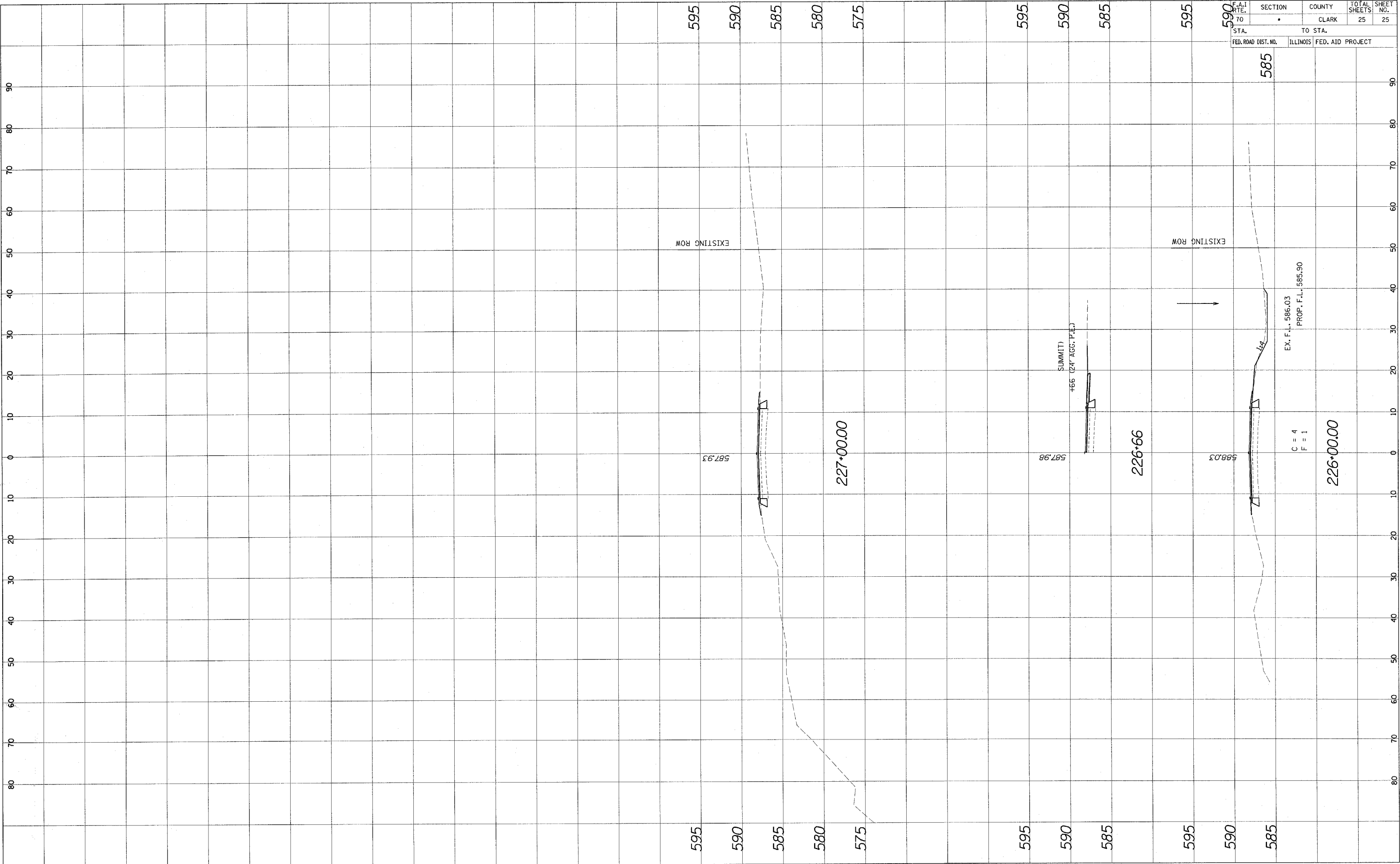
SURVEYED  
 SURVEY  
 NOTE BOOK  
 NO. \_\_\_\_\_



F.A.P. RTE.	SECTION	COUNTY	TOTAL SHEETS	SHEET NO.
71	3RRS-5	SANGAMON	25	24
STA.		TO STA.		
FED. ROAD DIST. NO.		ILLINOIS	FED. AID PROJECT	
		CONTRACT NO. 72614		



SURVEYED TO DATE: 2/10/2005  
 SURVEYED BY: [Name]  
 CHECKED BY: [Name]  
 SURVEY NO.: [Number]  
 NOTE BOOK NO.: [Number]  
 AREAS CHECKED: [List]



F.A.I. R.T.E. NO.	SECTION	COUNTY	TOTAL SHEETS	SHEET NO.
70	CLARK	CLARK	25	25
STA. TO STA.		FED. ROAD DIST. NO. ILLINOIS FED. AID PROJECT		
590		585		

72614