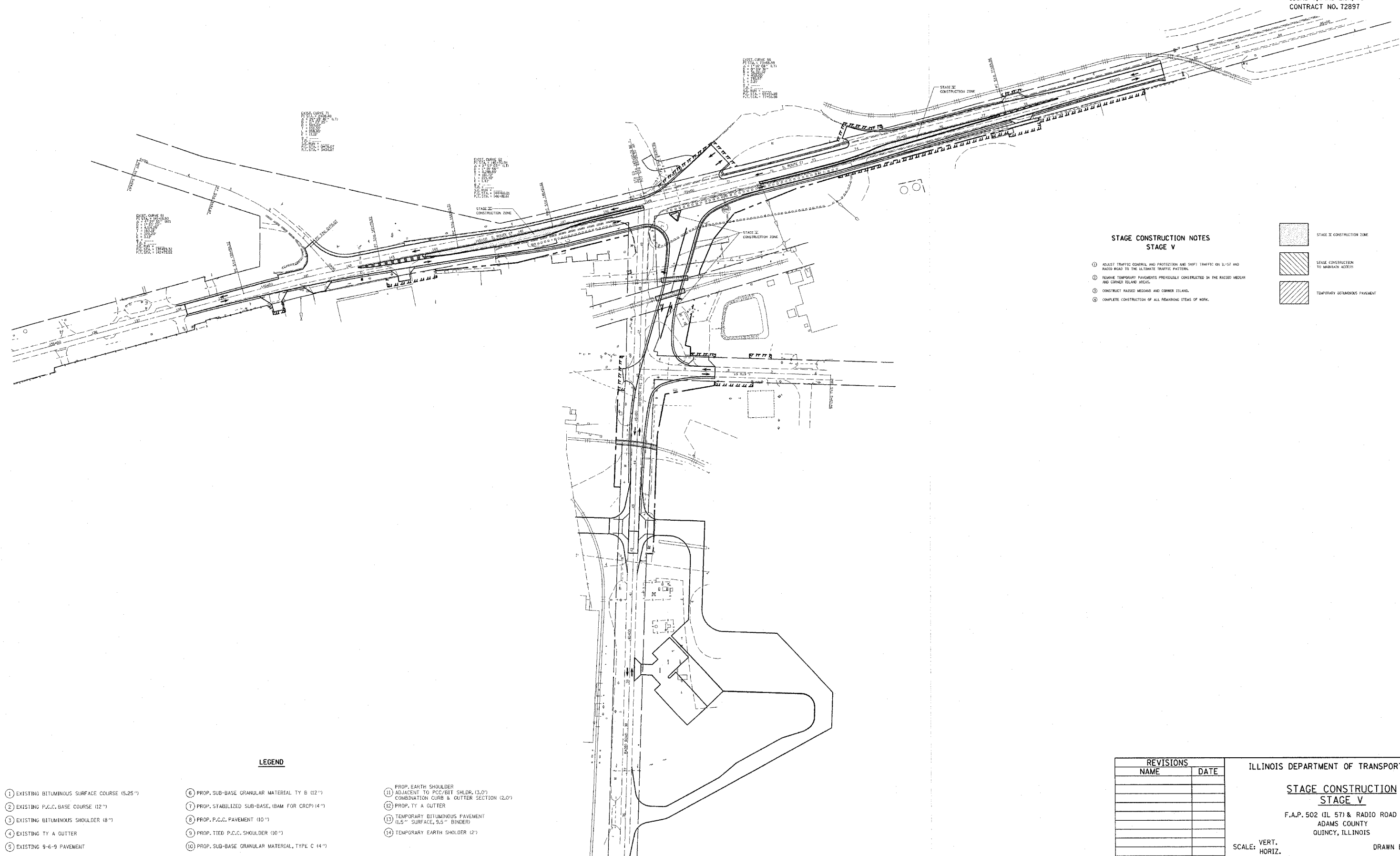


F.A.P. RTE.	SECTION	COUNTY	TOTAL SHEETS	SHEET NO.
502		ADAMS	315	31
STA.		TO STA.		
FED. ROAD DIST. NO.	ILLINOIS	FED. AID PROJECT		
[53RS-7, PIRS-2]N, TS CONTRACT NO. 72897				



**STAGE CONSTRUCTION NOTES
STAGE V**

- 1 ADJUST TRAFFIC CONTROL AND PROTECTION AND SHIFT TRAFFIC ON IL-57 AND RADIO ROAD TO THE ULTIMATE TRAFFIC PATTERN.
- 2 REMOVE TEMPORARY PAVEMENTS PREVIOUSLY CONSTRUCTED IN THE RAISED MEDIUM AND CORNER ISLAND AREAS.
- 3 CONSTRUCT RAISED MEDIANS AND CORNER ISLAND.
- 4 COMPLETE CONSTRUCTION OF ALL REMAINING ITEMS OF WORK.

	STAGE II CONSTRUCTION ZONE
	STAGE CONSTRUCTION TO MAINTAIN ACCESS
	TEMPORARY RETARDANT PAVEMENT

LEGEND

- | | | |
|--|---|--|
| 1 EXISTING BITUMINOUS SURFACE COURSE (5.25") | 6 PROP. SUB-BASE GRANULAR MATERIAL TY B (12") | 11 PROP. EARTH SHOULDER ADJACENT TO PCC/BIT SHLDR. (3.0') |
| 2 EXISTING P.C.C. BASE COURSE (12") | 7 PROP. STABILIZED SUB-BASE, (BAM FOR CRCP) (14") | 12 COMBINATION CURB & GUTTER SECTION (2.0') |
| 3 EXISTING BITUMINOUS SHOULDER (8") | 8 PROP. P.C.C. PAVEMENT (10") | 13 PROP. TY A GUTTER |
| 4 EXISTING TY A GUTTER | 9 PROP. TIED P.C.C. SHOULDER (10") | 14 TEMPORARY BITUMINOUS PAVEMENT (1.5" SURFACE, 9.5" BINDER) |
| 5 EXISTING 9-6-9 PAVEMENT | 10 PROP. SUB-BASE GRANULAR MATERIAL, TYPE C (4") | 15 TEMPORARY EARTH SHOULDER (2') |

REVISIONS	
NAME	DATE

ILLINOIS DEPARTMENT OF TRANSPORTATION

**STAGE CONSTRUCTION
STAGE V**

F.A.P. 502 (IL 57) & RADIO ROAD
ADAMS COUNTY
QUINCY, ILLINOIS

SCALE: VERT. _____
HORIZ. _____

DATE _____

DRAWN BY _____
CHECKED BY _____

c:\projects\653004\woolpert_080204\radio rd stage 5.dgn
 2/2/2005
 REF 01