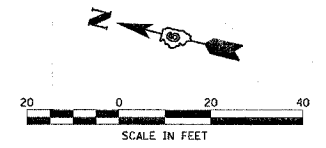


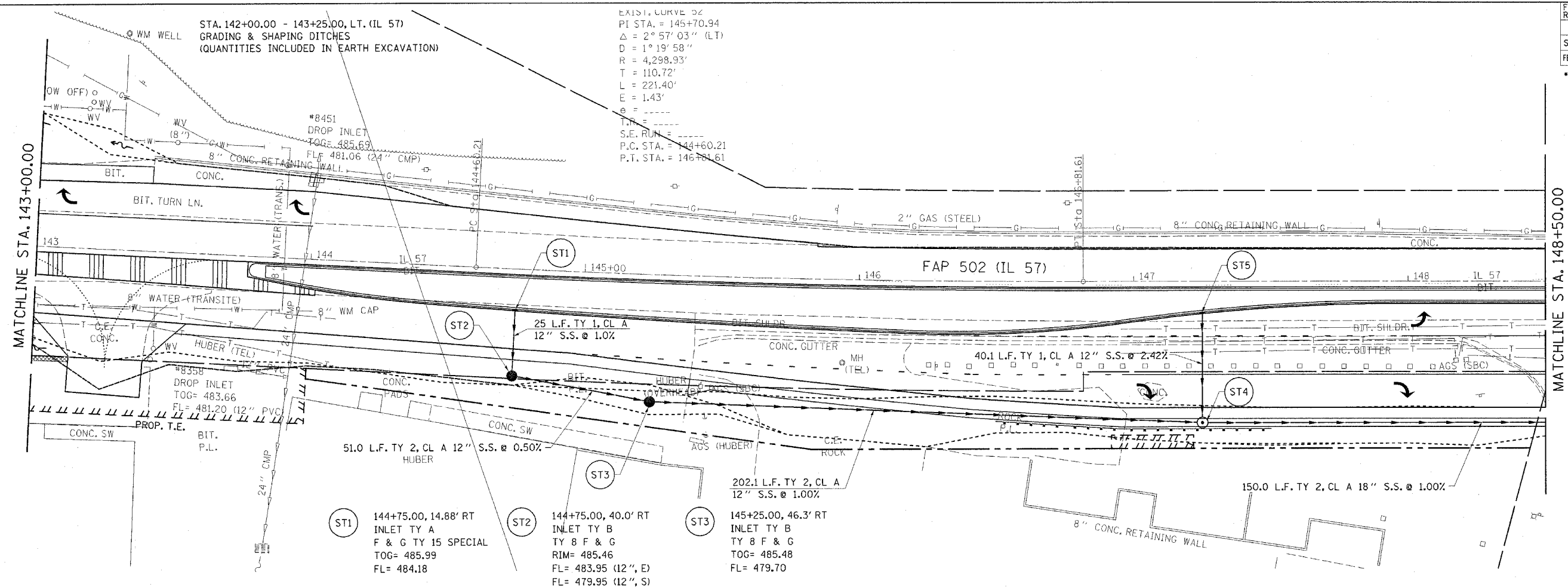
F.A.P. RTE.	SECTION	COUNTY	TOTAL SHEETS	SHEET NO.
502	*	ADAMS	315	44
STA.		TO STA.		
FED. ROAD DIST. NO.		ILLINOIS FED. AID PROJECT		

* (53RS-7, PIR5-2) IN, TS
CONTRACT NO. 72897



EXIST. CURVE DATA
PI STA. = 145+70.94
 $\Delta = 2^\circ 57' 03''$ (LT)
 $D = 1^\circ 19' 58''$
 $R = 4,298.93'$
 $T = 110.72'$
 $L = 221.40'$
 $E = 1.43'$
 $\theta =$
T.P. =
S.E. RUN =
P.C. STA. = 144+60.21
P.T. STA. = 146+81.61

STA. 142+00.00 - 143+25.00, LT. (IL 57)
GRADING & SHAPING DITCHES
(QUANTITIES INCLUDED IN EARTH EXCAVATION)



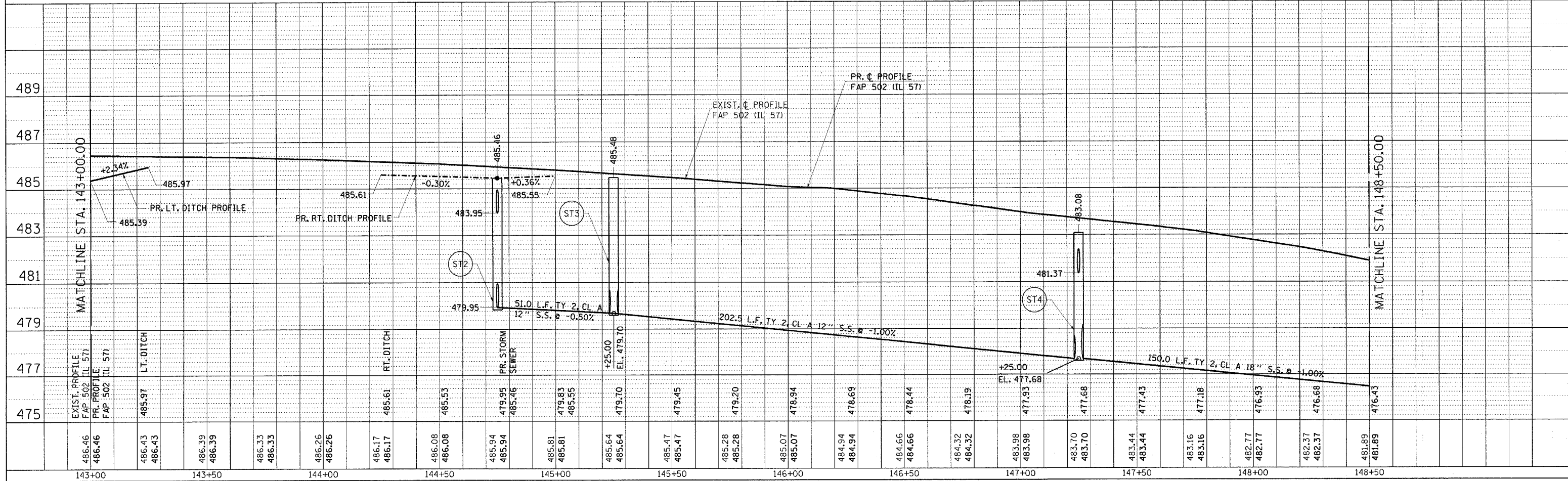
- ST5 147+25.00, 11.4' RT INLET TY A F & G TY 15 SPECIAL TOG= 483.70 FL= 481.75
- ST4 147+25.00, 51.50' RT MANHOLE TY A 4' DIA., TY 9 F & G RIM= 483.08 FL= 481.37 (E) FL= 477.68 (N,S)

- ST1 144+75.00, 14.88' RT INLET TY A F & G TY 15 SPECIAL TOG= 485.99 FL= 484.18
- ST2 144+75.00, 40.0' RT INLET TY B TY 8 F & G RIM= 485.46 FL= 483.95 (12", E) FL= 479.95 (12", S)
- ST3 145+25.00, 46.3' RT INLET TY B TY 8 F & G TOG= 485.48 FL= 479.70

DATE	BY	REVISION

DATE	BY	REVISION

c:\projects\653004\653004.dwg.dgn
2/3/2005
*REF01



489
487
485
483
481
479
477
475

143+00 143+50 144+00 144+50 145+00 145+50 146+00 146+50 147+00 147+50 148+00 148+50