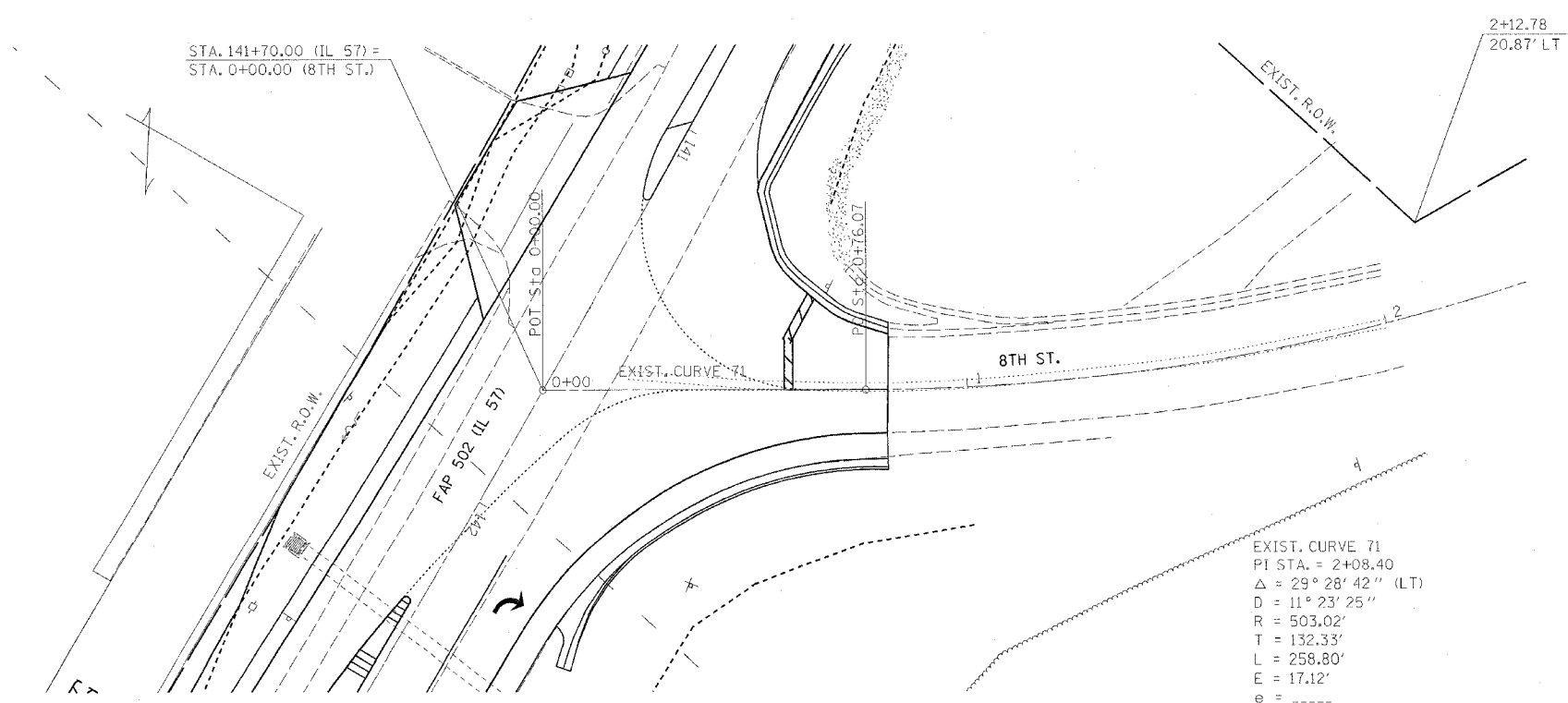
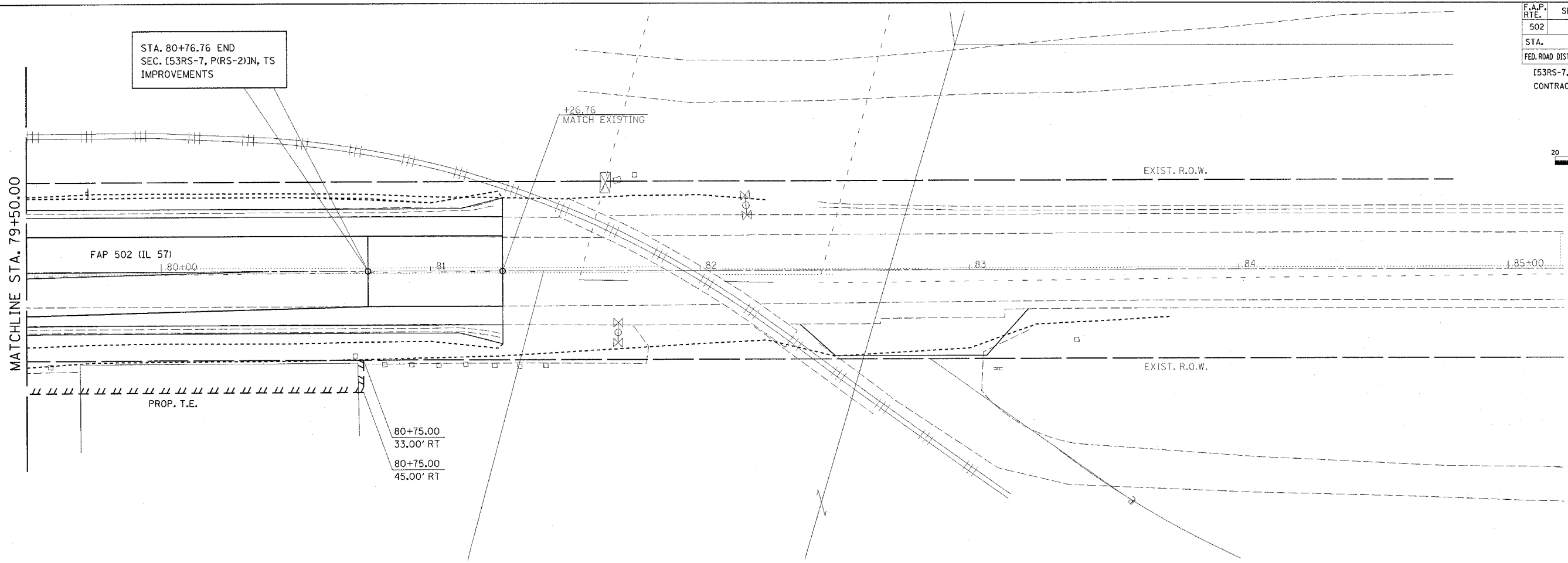
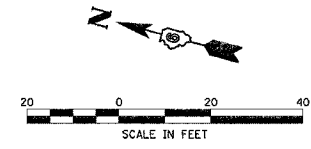


F.A.P. RTE.	SECTION	COUNTY	TOTAL SHEETS	SHEET NO.
502	*	ADAMS	315	55
STA.		TO STA.		
FED. ROAD DIST. NO.		ILLINOIS FED. AID PROJECT		
		[53RS-7, P[RS-2]N, TS		
		CONTRACT NO. 72897		



EXIST. CURVE 71  
 PI STA. = 2+08.40  
 $\Delta = 29^\circ 28' 42''$  (LT)  
 D =  $11^\circ 23' 25''$   
 R = 503.02'  
 T = 132.33'  
 L = 258.80'  
 E = 17.12'  
 e = -----  
 T.R. = -----  
 S.E. RUN = -----  
 P.C. STA. = 0+76.07  
 P.T. STA. = 3+34.87

REVISIONS	
NAME	DATE

ILLINOIS DEPARTMENT OF TRANSPORTATION  
**RIGHT OF WAY DETAILS**  
 FAP 502 (IL 57) & RADIO ROAD  
 SEC. [53RS-7, P[RS-2]N, TS  
 ADAMS COUNTY  
 QUINCY, IL.

SCALE: VERT. \_\_\_\_\_  
 HORIZ. \_\_\_\_\_  
 DATE 08-02-04

DRAWN BY TMJ  
 CHECKED BY MEB

c:\projects\0653004\prowp\sheet5.dgn  
 2/3/2005  
 \*REF 01