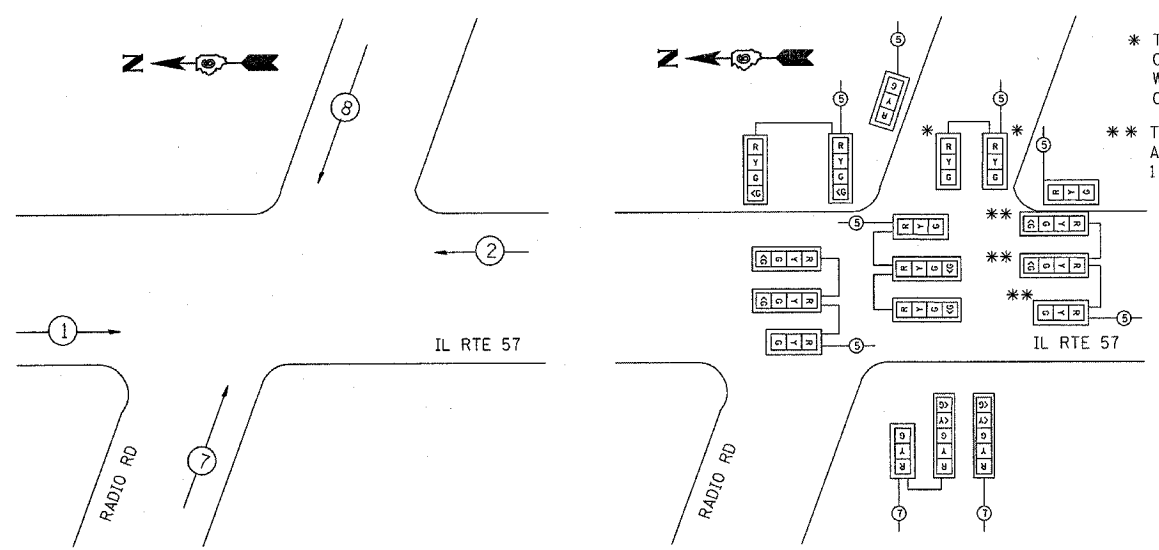


\* TEMPORARY SIGNAL HEADS FOR PROPOSED WEST APPROACH SHALL NOT OPERATE DURING STAGES 1, 2 & 3 AND SHALL BE COVERED. SIGNAL HEAD WIRING SHALL BE LANDED TO PHASE 4 OF TEMPORARY TRAFFIC SIGNAL CONTROLLER CABINET.

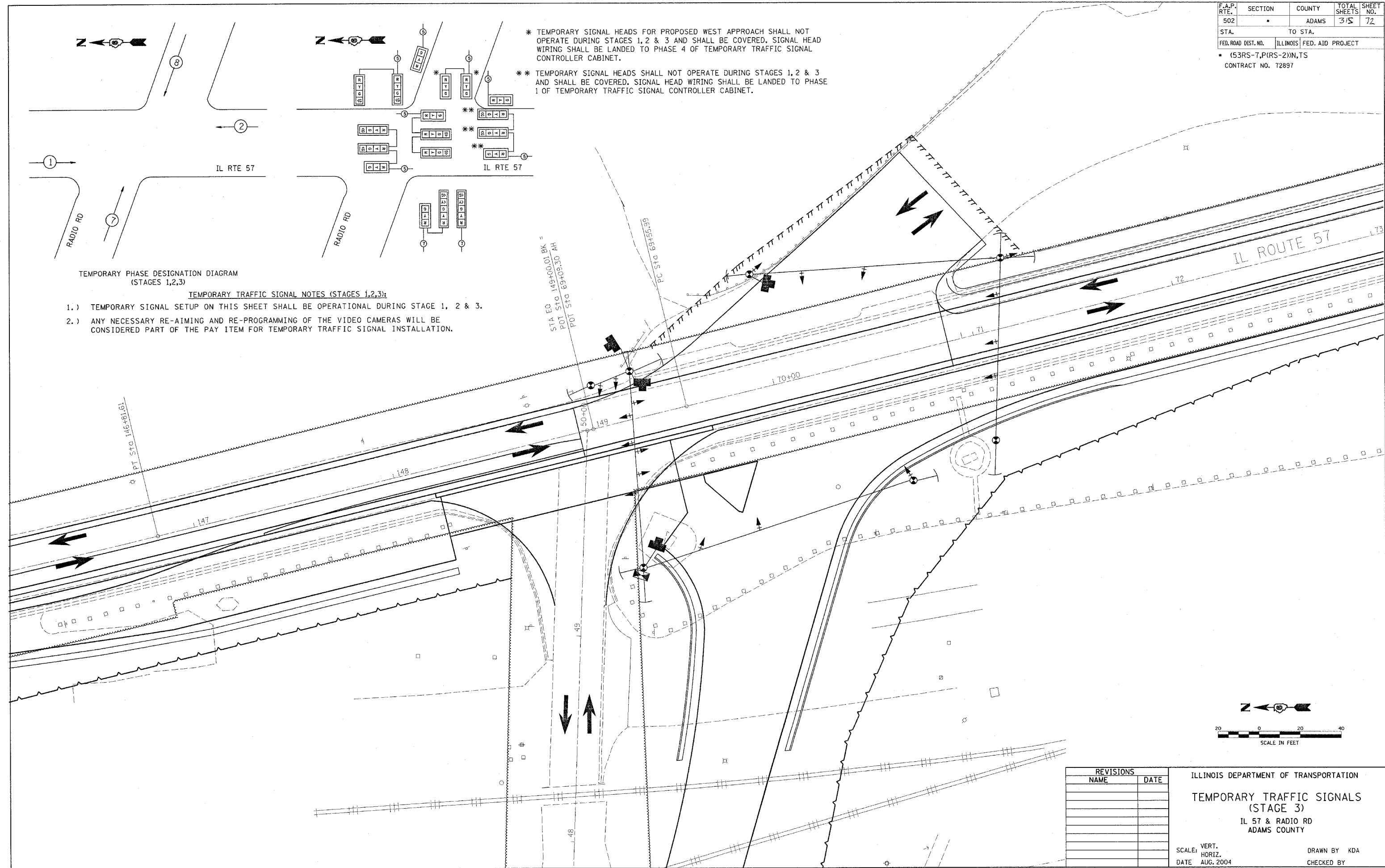
\*\* TEMPORARY SIGNAL HEADS SHALL NOT OPERATE DURING STAGES 1, 2 & 3 AND SHALL BE COVERED. SIGNAL HEAD WIRING SHALL BE LANDED TO PHASE 1 OF TEMPORARY TRAFFIC SIGNAL CONTROLLER CABINET.



TEMPORARY PHASE DESIGNATION DIAGRAM (STAGES 1,2,3)

TEMPORARY TRAFFIC SIGNAL NOTES (STAGES 1,2,3):

- 1.) TEMPORARY SIGNAL SETUP ON THIS SHEET SHALL BE OPERATIONAL DURING STAGE 1, 2 & 3.
- 2.) ANY NECESSARY RE-AIMING AND RE-PROGRAMMING OF THE VIDEO CAMERAS WILL BE CONSIDERED PART OF THE PAY ITEM FOR TEMPORARY TRAFFIC SIGNAL INSTALLATION.



REVISIONS	
NAME	DATE

ILLINOIS DEPARTMENT OF TRANSPORTATION  
 TEMPORARY TRAFFIC SIGNALS  
 (STAGE 3)  
 IL 57 & RADIO RD  
 ADAMS COUNTY

SCALE: VERT. \_\_\_\_\_  
 HORIZ. \_\_\_\_\_  
 DATE AUG. 2004

DRAWN BY KDA  
 CHECKED BY \_\_\_\_\_