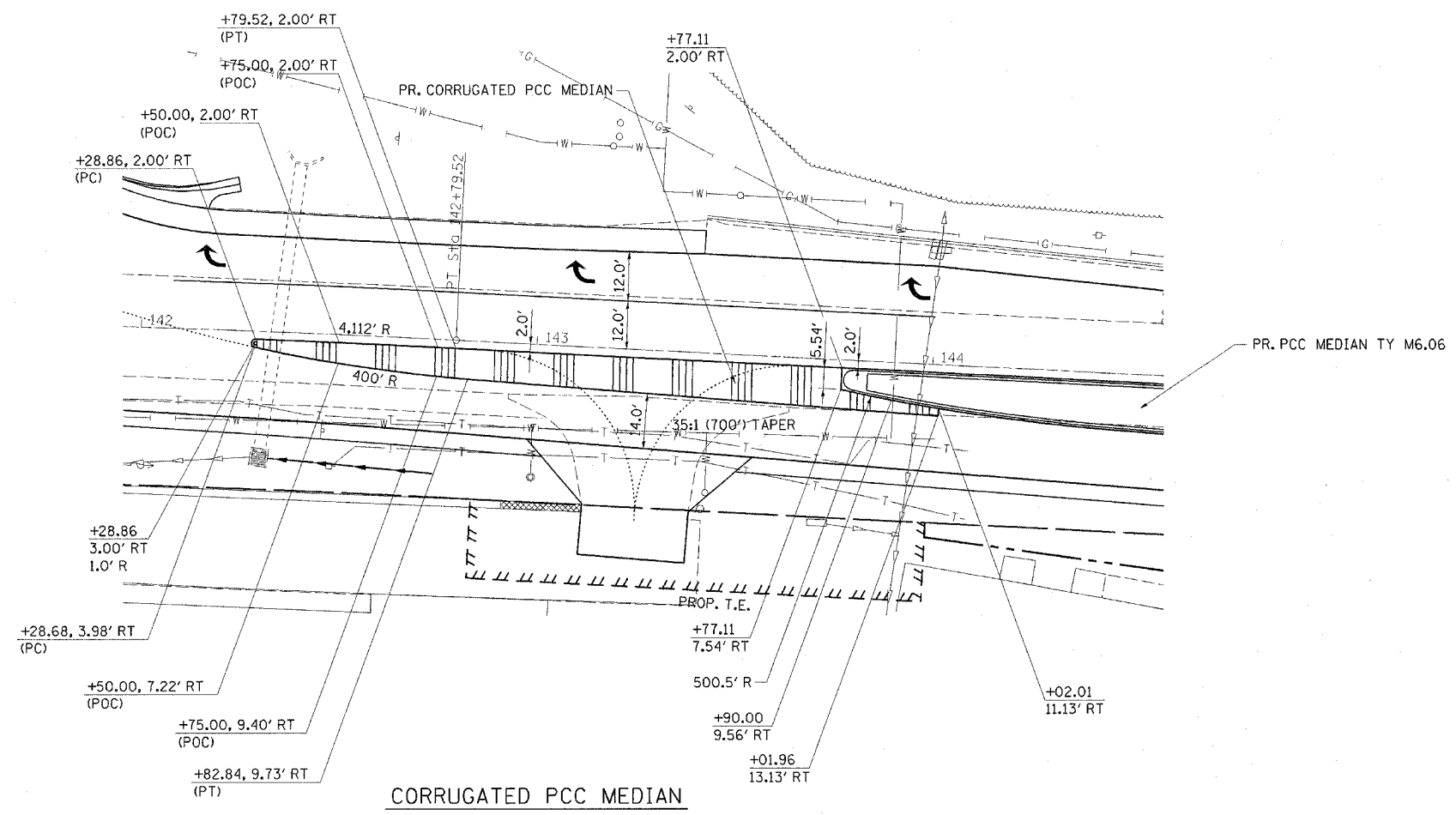
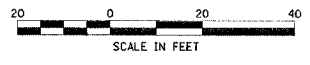


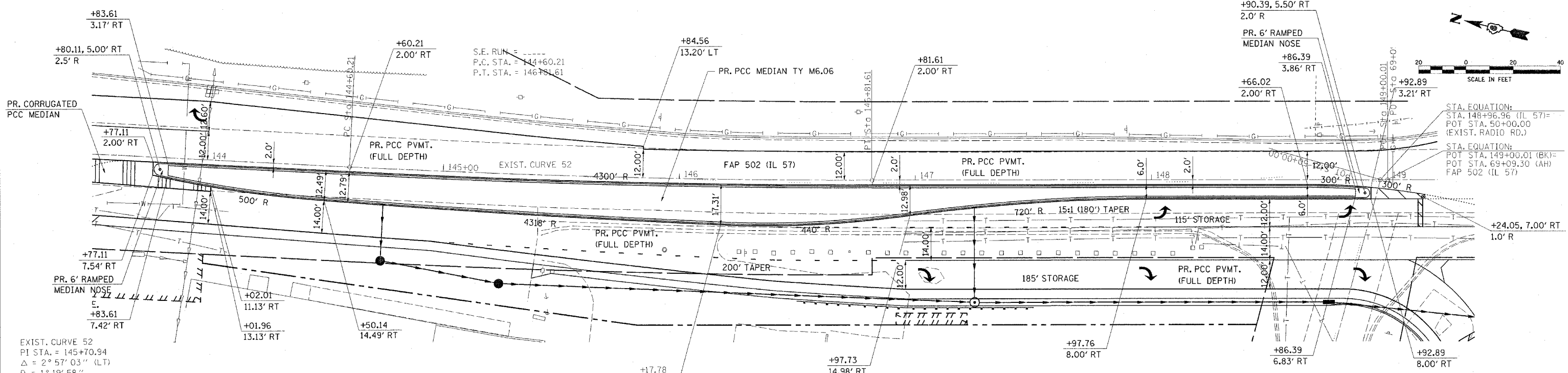
F.A.P. RTE.	SECTION	COUNTY	TOTAL SHEETS	SHEET NO.
502	.	ADAMS	315	91

STA.	TO STA.
FED. ROAD DIST. NO.	ILLINOIS FED. AID PROJECT

• [53RS-7, PIRS-2]N, TS
CONTRACT NO. 72897



CORRUGATED PCC MEDIAN



PCC MEDIAN TY M6.06

EXIST. CURVE 52
PI STA. = 145+70.94
 $\Delta = 2^\circ 57' 03''$ (LT)
 $D = 1^\circ 19' 58''$
 $R = 4,298.93'$
 $T = 110.72'$
 $L = 221.40'$
 $E = 1.43'$
 $e =$
 $T.R. =$
S.E. RUN = -----
P.C. STA. = 144+60.21
P.T. STA. = 146+81.61

REVISIONS	
NAME	DATE

ILLINOIS DEPARTMENT OF TRANSPORTATION
MEDIAN DETAIL
PR. PCC MEDIAN TY M6.06
PR. CORRUGATED PCC MEDIAN
STA. 142+27.86 - 148+92.89
FAP 502 (IL 57)
SCALE: VERT. _____
HORIZ. _____
DATE 07-27-04
DRAWN BY TMJ
CHECKED BY MEB

c:\projects\653004\ppsheets.dgn
2/27/2005
*REF01