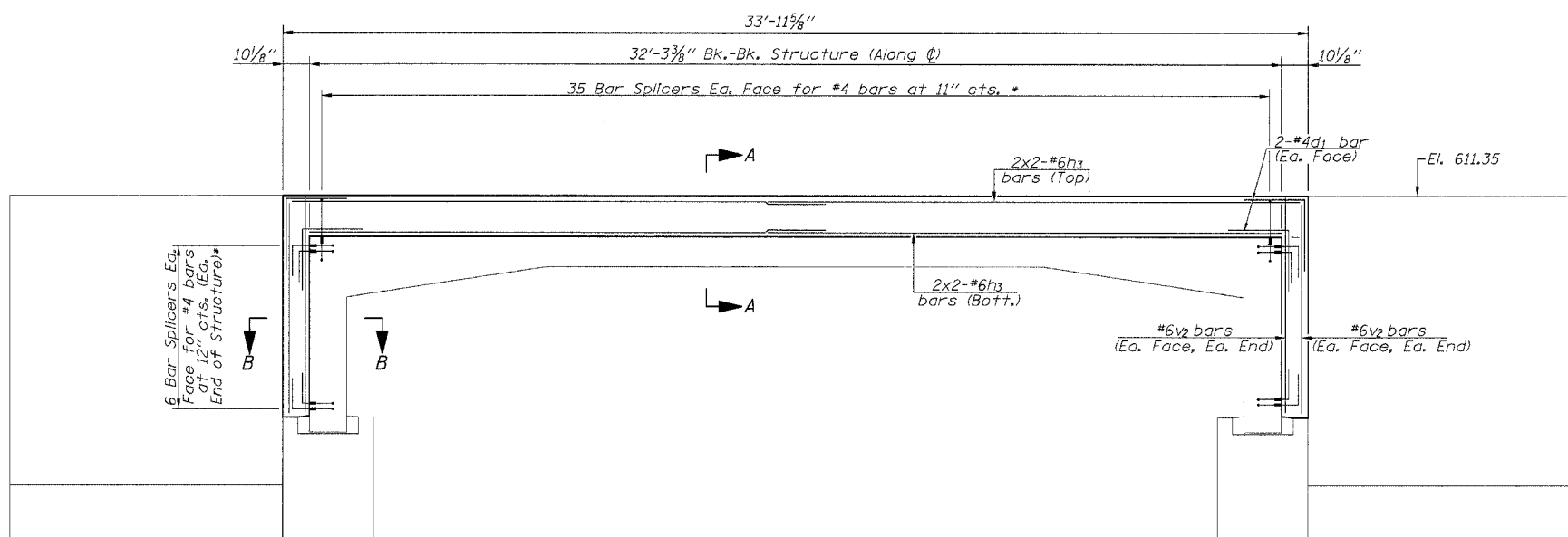
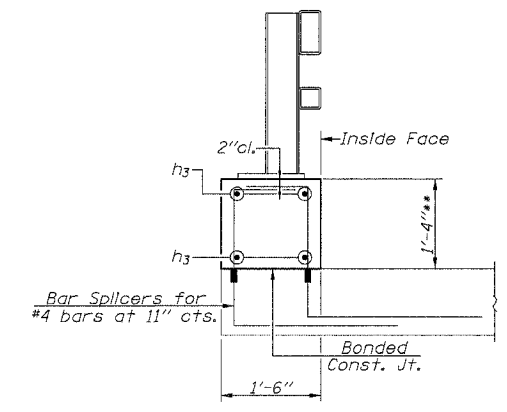


ROUTE NO.	SECTION	COUNTY	TOTAL SHEETS	SHEET NO.
F.A.P. 714	134B	CHRISTIAN	23	19
FED. ROAD DIST. NO.	ILLINOIS	FED. AID PROJECT		

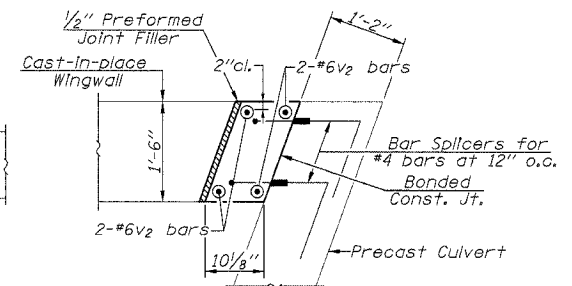
SHEET NO. 6 OF 10 SHEETS



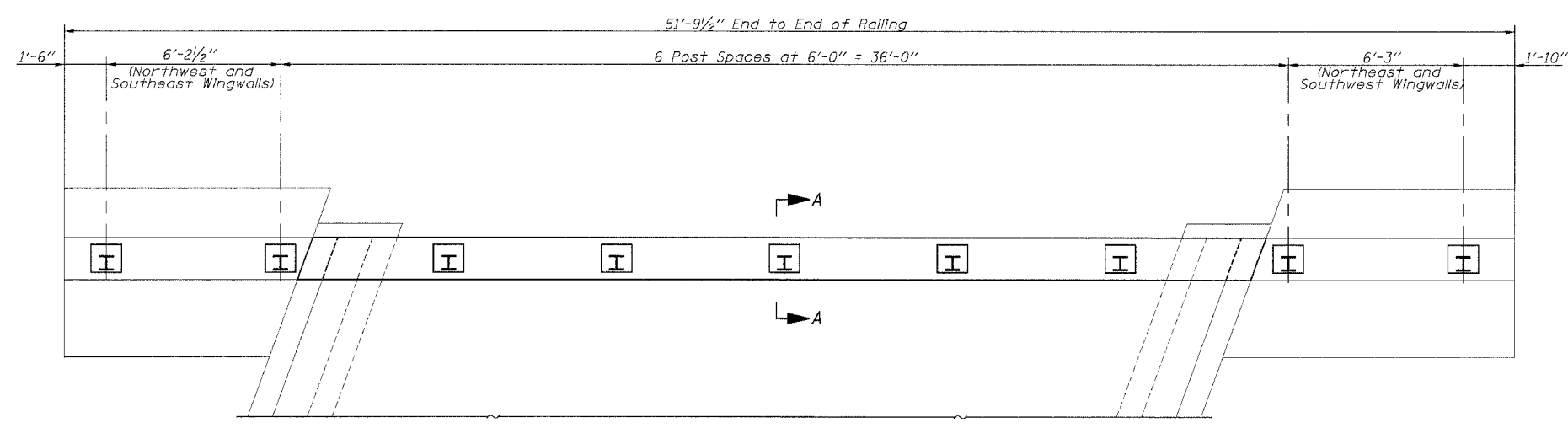
ELEVATION



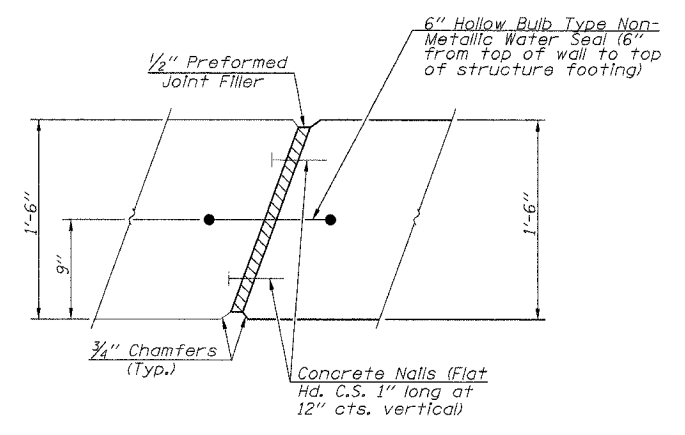
SECTION A-A
 ** Dimension may vary depending on top slab thickness of three-sided Precast Concrete Structure.



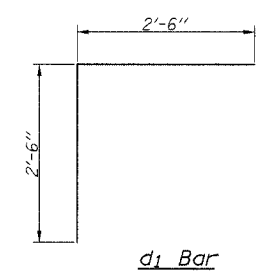
SECTION B-B



PLAN



CORNER SEAL DETAIL



MIN. BAR LAP
 *6 bar = 2'-7"

TWO HEADWALLS BILL OF MATERIAL

BAR	NO.	SIZE	LENGTH	SHAPE
d ₁	16	#6	5'-0"	┌
h ₃	16	#6	18'-2"	—
v ₂	16	#6	7'-4"	—
Concrete Structures		Cu. Yd.	6.2	
Reinforcement Bars		Pound	735	

Bars indicated thus 2x2-#6 etc. indicates 2 lines of bars with 2 lengths per line.

* Cost of Bar Splicers are included in the cost of "Three Sided Precast Concrete Structures".

HEADWALL DETAILS
 IL. ROUTE 48 OVER BUCKHART CREEK
 F.A.P. ROUTE 714 - SECTION 134B
 CHRISTIAN COUNTY
 STA. 432+32
 S.N. 011-2505

FILE NAME: 134B-STRUCTURE (REV. 2/4/05)