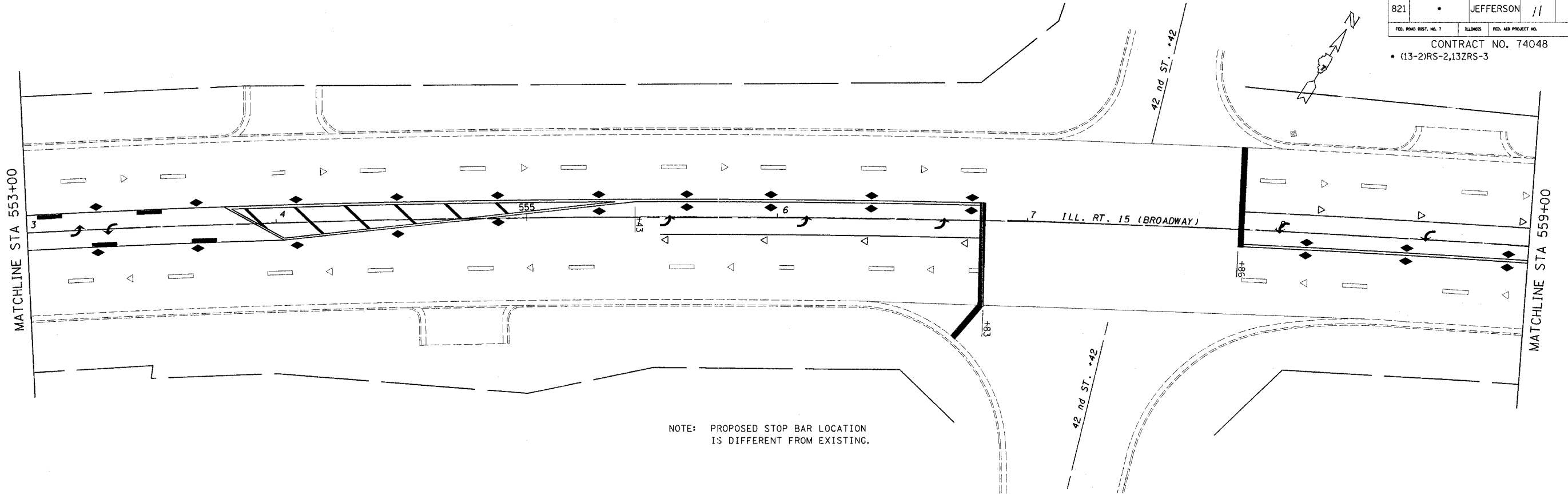
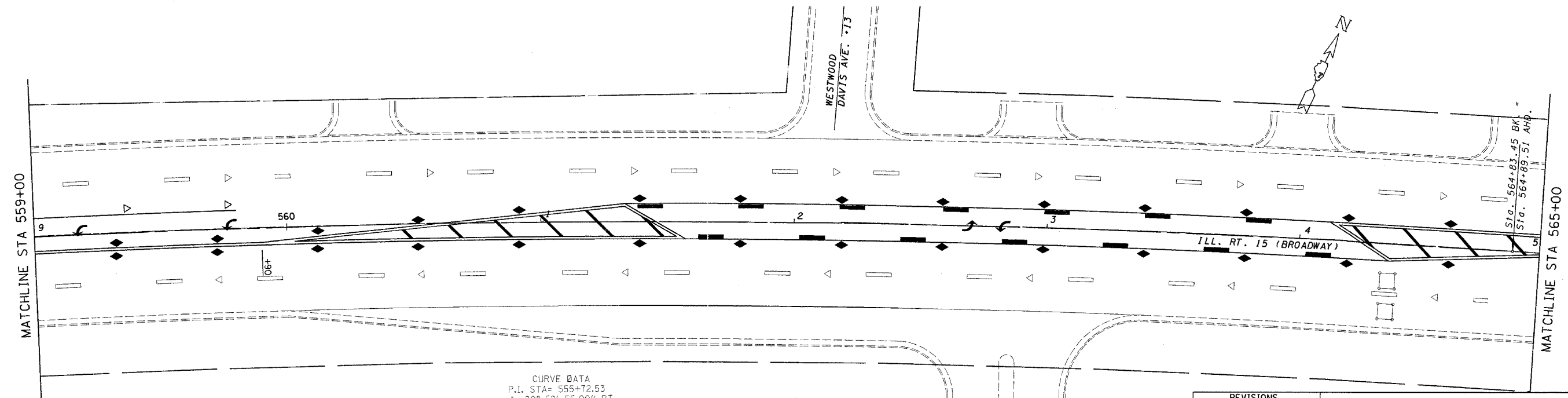


steffenmk
 10/26/2004
 c:\projects\74048d\02904po.dgn

FAP NO.	SECTION	COUNTY	TOTAL SHEETS	SHEET NO.
821		JEFFERSON	11	6
FED. ROAD DIST. NO. 7 ILLINOIS FED. AID PROJECT NO.				
CONTRACT NO. 74048				
• (13-2)RS-2,13ZRS-3				



NOTE: PROPOSED STOP BAR LOCATION IS DIFFERENT FROM EXISTING.



CURVE DATA
 P.I. STA= 555+72.53
 $\Delta = 20^{\circ} 52' 55.00''$ RT
 $D = 1^{\circ} 07' 60.00''$
 $R = 5,055.51$
 $T = 931.60$
 $L = 1,842.52$
 $E = 85.12$
 $S.E. =$
 P.C. STA= 546+40.93
 P.T. STA= 564+83.45

REVISIONS	
NAME	DATE

ILLINOIS DEPARTMENT OF TRANSPORTATION

**STA. 553 + 00
 TO
 STA. 565 + 00**

SCALE: VERT. _____
 HORIZ. _____

DATE _____

DRAWN BY _____
 CHECKED BY _____