

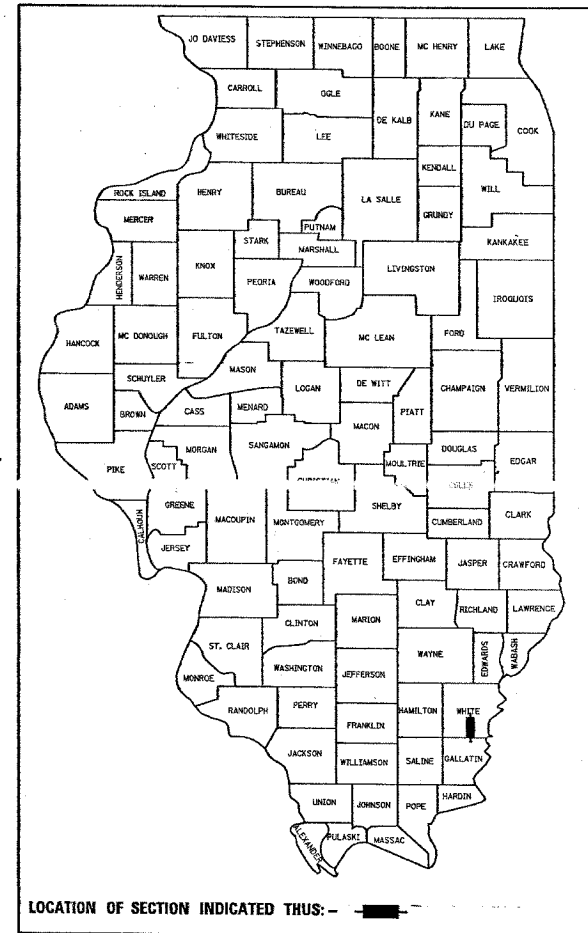
teesleyck
2/9/2005
c:\projects\74069\d05004pe.dgn
TYP

F.A.P. RTE.	SECTION	COUNTY	TOTAL SHEETS	SHEET NO.
332		WHITE	7	1

CONTRACT NO. 74069

D-7 BIT RESURF 2005-1

D-97-050-04



LOCATION OF SECTION INDICATED THUS: ———

STATE OF ILLINOIS
DEPARTMENT OF TRANSPORTATION
DIVISION OF HIGHWAYS

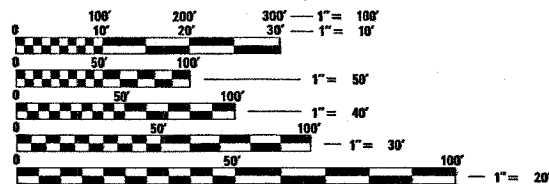
PLANS FOR PROPOSED FEDERAL HIGHWAY PROJECT

FAP ROUTE 332 (IL 1)
SECTION D-7 BIT RESURF 2005-1
WHITE COUNTY

C-97-090-04

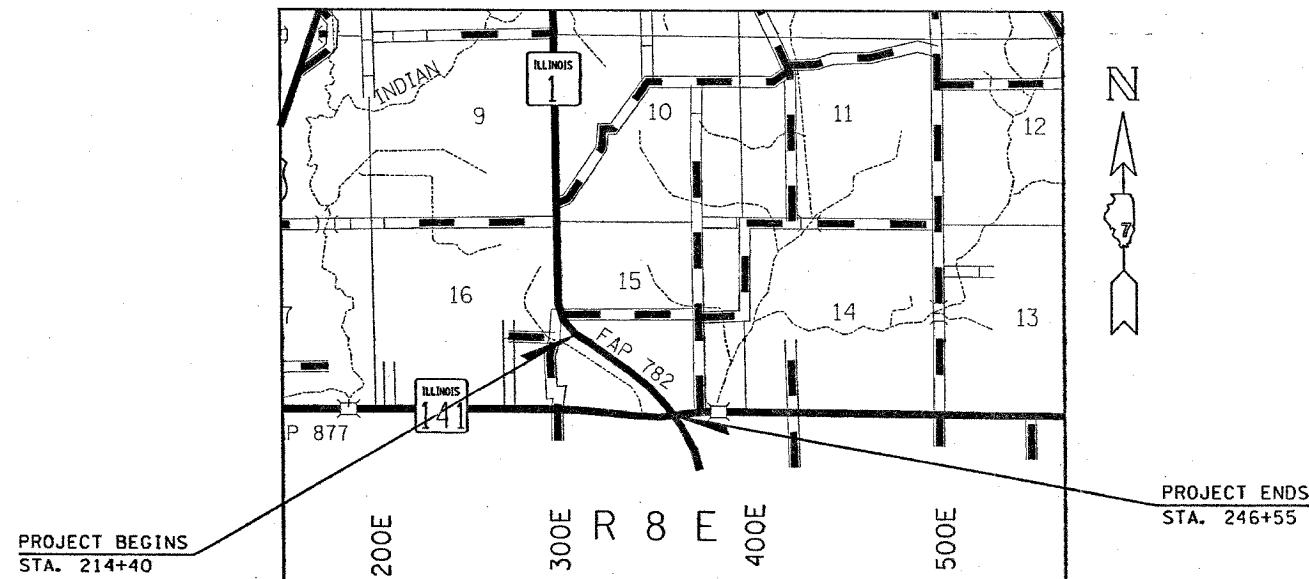
FOR INDEX OF SHEETS, SEE SHEET NO. 2

ADT (2003) = 1750



FULL SIZE PLANS HAVE BEEN PREPARED USING STANDARD ENGINEERING SCALES. REDUCED SIZED PLANS WILL NOT CONFORM TO STANDARD SCALES. IN MAKING MEASUREMENTS ON REDUCED PLANS, THE ABOVE SCALES MAY BE USED.

J.U.L.I.E.
JOINT UTILITY LOCATION INFORMATION FOR EXCAVATION
1-800-892-0123



PROJECT BEGINS
STA. 214+40

PROJECT ENDS
STA. 246+55

GROSS LENGTH = 3215 FEET = 0.61 MILES
NET LENGTH = 3215 FEET = 0.61 MILES

CONTRACT NO. 74069 TOWNSHIP : INDIAN CREEK

STATE OF ILLINOIS
DEPARTMENT OF TRANSPORTATION
DIVISION OF HIGHWAYS

SUBMITTED FEB 9 2005
Christine M. Reed
DEPUTY DIRECTOR OF HIGHWAYS, REGION ENGINEER

March 25, 2005
Mike Hine
ENGINEER OF DESIGN AND ENVIRONMENT

March 25, 2005
Victor Moderski
DIRECTOR OF HIGHWAYS, CHIEF ENGINEER

**PRINTED BY THE AUTHORITY
OF THE STATE OF ILLINOIS**

teesleyck
2/9/2005
c:\projects\74069a\d05004pa.dgn
GN& I

CONTRACT NO. 74069

F.A.P. RTE.	SECTION	COUNTY	TOTAL SHEETS	SHEET NO.
332	*	WHITE		2
STA.		TO STA.		
FED. ROAD DIST. NO.	ILLINOIS	FED. AID PROJECT		

* D-7 BIT RESURF 2005-1

GENERAL NOTES

THE WORK INCLUDED IN SECTION D-7 BITUMINOUS RESURFACING 2005-1 CONSISTS OF 0.61 MILES OF BITUMINOUS SURFACE REMOVAL, RESURFACING WITH BITUMINOUS CONCRETE, BITUMINOUS SHOULDERS SUPERPAVE, PAVEMENT MARKING AND ANY OTHER WORK NECESSARY TO COMPLETE THIS SECTION.

SHORT-TERM MARKINGS ON THE MILLED SURFACE SHALL BE PAINT.

ALL COLD MILLINGS FROM THIS PROJECT WILL BECOME PROPERTY OF THE STATE OF ILLINOIS. TWO WEEKS PRIOR TO ANY COLD MILLING ACTIVITY, PLEASE CONTACT BILL RANKIN OF THE ENFIELD MAINTENANCE YARD AT 611 N. FIRST ST. IN ENFIELD, IL (PHONE 618/963-2812) FOR SPECIFICS.

NO MAINLINE OR SHOULDER DROP-OFF EXCEEDING 1.5" WILL BE PERMITTED OVERNIGHT.

EXCAVATION FOR BITUMINOUS SHOULDERS, SUPERPAVE 6.5" SHALL BE INCLUDED IN THE COST OF THE PAY ITEM BITUMINOUS SHOULDERS, SUPERPAVE 6.5".

110 TONS OF AGGREGATE SHOULDERS, TYPE B HAS BEEN ADDED TO THE PROJECT TO CORRECT ANY EXISTING AGGREGATE SHOULDER DROP-OFFS. AGGREGATE SHOULDERS, TYPE B SHALL BE PLACED AS DIRECTED BY THE ENGINEER.

THE RESIDENT ENGINEER SHALL BE THE SOLE JUDGE CONCERNING THE CURING TIME FOR THE VARIOUS BITUMINOUS LIFTS.

THE CONTRACTOR SHALL PROVIDE INTERNET ACCESS TO THE BITUMINOUS PLANT QUALITY CONTROL LAB SO THAT BITUMINOUS PLANT REPORTS CAN BE E-MAILED TO THE DISTRICT HEADQUARTERS. THIS WORK WILL NOT BE PAID FOR SEPARATELY BUT SHALL BE INCLUDED IN THE UNIT PRICES FOR OTHER ITEMS IN THE CONTRACT.

BITUMINOUS MATERIALS (PRIME COAT) SHALL BE EITHER RC-70 OR SS-1HP.

THE FOLLOWING MIXTURE REQUIREMENTS ARE APPLICABLE FOR THIS PROJECT:

APPLICATION	FRICION AGGREGATE	AC/PG	RAP%(MAX)	DESIGN AIR Voids	MIXTURE COMPOSITION
SURF. COURSE	MIX C	64-22	15	4.0% NDESIGN = 50	IL-9.5 OR IL-12.5
BIT. SHLDS.: FIRST LIFT	N/A	58-22	25	4.0% NDESIGN = 70	IL-19.0
BIT. SHLDS.: SECOND LIFT	N/A	58-22	25	4.0% NDESIGN = 30	IL-9.5

INDEX OF SHEETS

SHEET NO	TITLE
1	COVER SHEET
2	INDEX OF SHEETS, GENERAL NOTES
3	SUMMARY OF QUANTITIES
4-5	TYPICAL SECTIONS
6	SCHEDULES
7	PLAN SHEET

THE FOLLOWING STANDARDS ARE PART OF THESE PLANS AND ARE INCLUDED AFTER SHEET NUMBER 7:

000001-04	STANDARD SYMBOLS, ABBREVIATIONS, AND PATTERNS
701006-02	OFF-ROAD OPERATIONS, 2L 2W, 15' TO 24" AWAY, FOR SPEEDS >= 45 MPH
701301-02	LANE CLOSURE, 2L 2W, SHORT TIME OPERATIONS
701306-01	LANE CLOSURE, 2L 2W, SLOW MOVING OPERATIONS, DAY ONLY FOR SPEEDS >= 45 MPH
701311-02	LANE CLOSURE, 2L 2W, MOVING OPERATIONS, DAY ONLY
701326-02	LANE CLOSURE, 2L 2W, PAVEMENT WIDENING, FOR SPEEDS >= 45 MPH
702001-05	TRAFFIC CONTROL DEVICES
780001-01	TYPICAL PAVEMENT MARKINGS

PLOT DATE = 2/9/2005
FILE NAME = #FILEL4
PLOT SCALE = #SCALE
REFERENCE = #REF4

REVISIONS		ILLINOIS DEPARTMENT OF TRANSPORTATION
NAME	DATE	
		GENERAL NOTES & INDEX OF SHEETS
SCALE:	VERT. DATE	HORIZ. CHECKED BY
		DRAWN BY

F.A.P. RTE.	SECTION	COUNTY	TOTAL SHEETS	SHEET NO.
332	*	WHITE		3
STA.		TO STA.		
FED. ROAD DIST. NO.	ILLINOIS	FED. AID PROJECT		
* D-7 BIT RESURF 2005-1				

SUMMARY OF QUANTITIES			TOTAL QUANTITIES	CONSTRUCTION TYPE CODE		
CODE NO	ITEM	UNIT		1000		
40600100	BITUMINOUS MATERIALS (PRIME COAT)	GALLON	890	890		
40600300	AGGREGATE (PRIME COAT)	TON	20	20		
40600990	TEMPORARY RAMP	SQ YD	30	30		
44000006	BITUMINOUS SURFACE REMOVAL 1 1/2"	SQ YD	8850	8850		
48101200	AGGREGATE SHOULDERS, TYPE B	TON	110	110		
48202410	BITUMINOUS SHOULDERS SUPERPAVE 6 1/2"	SQ YD	50	50		
67100100	MOBILIZATION	L SUM	1	1		
70100460	TRAFFIC CONTROL AND PROTECTION, STANDARD 701306	L SUM	1	1		
70100500	TRAFFIC CONTROL AND PROTECTION, STANDARD 701326	L SUM	1	1		
70300100	SHORT-TERM PAVEMENT MARKING	FOOT	960	960		
70301000	WORK ZONE PAVEMENT MARKING REMOVAL	SQ FT	110	110		
* 78001110	PAINT PAVEMENT MARKING - LINE 4"	FOOT	7440	7440		
* 78100100	RAISED REFLECTIVE PAVEMENT MARKER	EACH	41	41		
X4066414	BITUMINOUS CONCRETE SURFACE COURSE, SUPERPAVE, MIX "C", N50	TON	750	750		

teasleyck
 2/9/2005
 ct\projects\74069d\05004pa.dgn
 TYP

PLOT DATE * 2/9/2005
 FILE NAME * #FILE#
 PLOT SCALE * #SCALE#
 REFERENCE * #REF#

* SPECIALTY ITEMS

REVISIONS	
NAME	DATE

ILLINOIS DEPARTMENT OF TRANSPORTATION

SUMMARY OF QUANTITIES

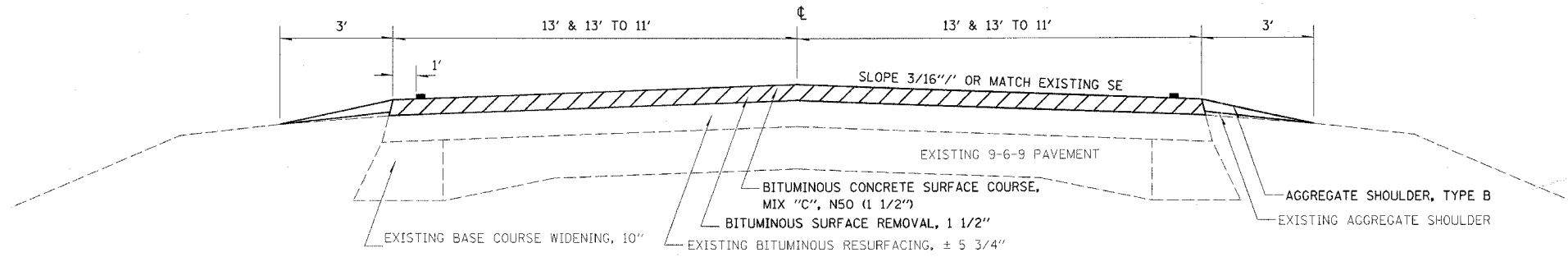
SCALE: VERT. _____
 DATE _____

DRAWN BY _____
 CHECKED BY _____

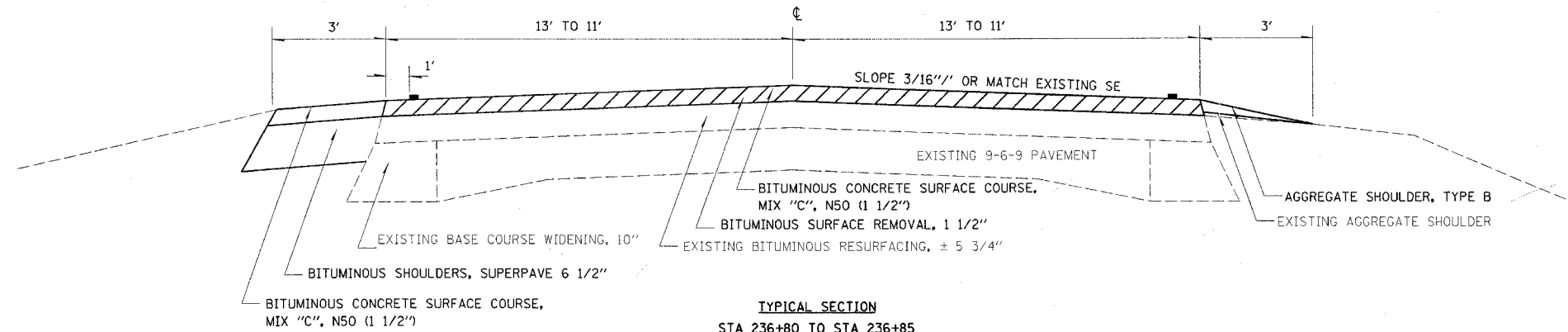
F.A.P. RTE.	SECTION	COUNTY	TOTAL SHEETS	SHEET NO.
332	*	WHITE		4
STA.		TO STA.		
FED. ROAD DIST. NO.	ILLINOIS	FED. AID PROJECT		

D-7 BIT RESURF 2005-1

teasleyok
 2/9/2005
 c:\projects\74069\d05004pa.dgn
 TYP



TYPICAL SECTION
STA 214+40 TO STA 236+80



TYPICAL SECTION
STA 236+80 TO STA 236+85

REVISIONS	
NAME	DATE

ILLINOIS DEPARTMENT OF TRANSPORTATION

TYPICAL SECTIONS

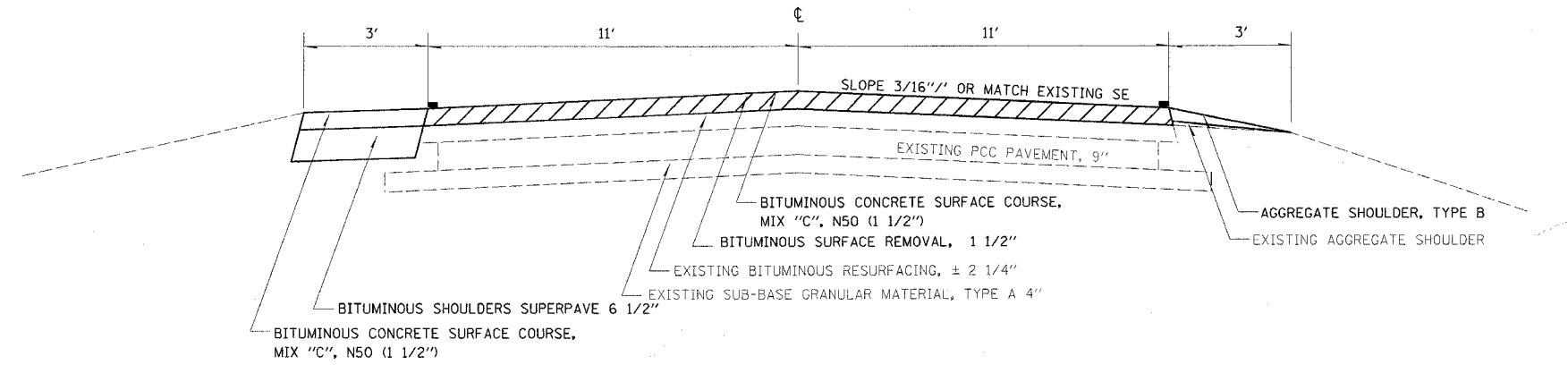
SCALE: VERT.
HORIZ.
DATE

DRAWN BY
CHECKED BY

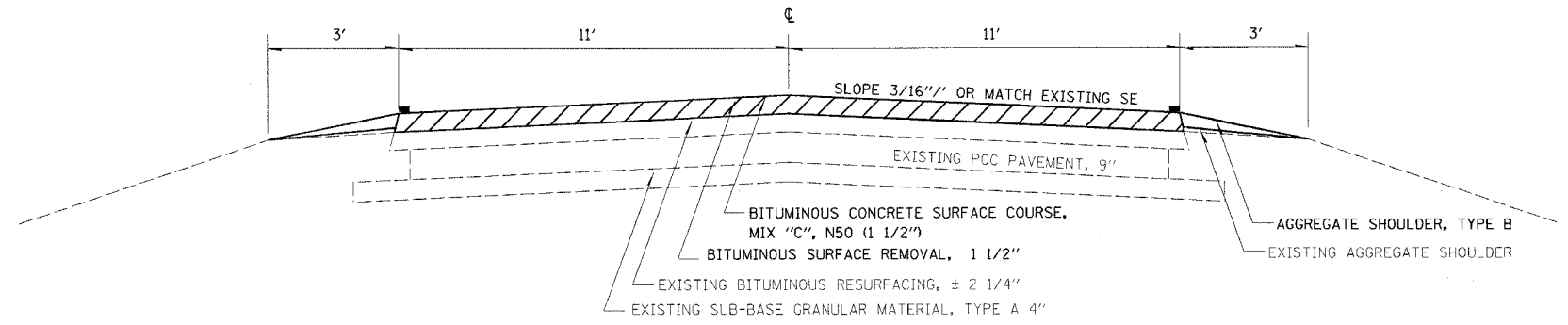
PLOT DATE = 2/9/2005
 FILE NAME = *FILEL*
 PLOT SCALE = *SCALE*
 REFERENCE = *REF*

F.A.P. RTE.	SECTION	COUNTY	TOTAL SHEETS	SHEET NO.
332		WHITE		5
STA.		TO STA.		
FED. ROAD DIST. NO.	ILLINOIS	FED. AID PROJECT		

* D-7 BIT RESURF 2005-1



TYPICAL SECTION
STA 236+85 TO STA 238+30



TYPICAL SECTION
STA 238+30 TO STA 246+55

teasleyok
 2/9/2005
 c:\projects\74069d\05004pa.dgn
TYP 2

PLOT DATE : 2/9/2005
 FILE NAME : #FILE#
 PLOT SCALE : #SCALE#
 REFERENCE : #REF#

REVISIONS	
NAME	DATE

ILLINOIS DEPARTMENT OF TRANSPORTATION

TYPICAL SECTIONS

SCALE: VERT. _____
 HORIZ. _____

DATE _____ DRAWN BY _____
 CHECKED BY _____

teesleyck
2/9/2005
c:\projects\74069d\05004pa.dgn
TYP

CONTRACT NO. 74069

F.A.P. RTE.	SECTION	COUNTY	TOTAL SHEETS	SHEET NO.
332	*	WHITE		6
STA.		TO STA.		
FED. ROAD DIST. NO.		ILLINOIS FED. AID PROJECT		

• D-7 BIT RESURF 2005-1

MARKING SCHEDULE

STATION TO STATION	LENGTH	SHORT TERM PAVEMENT MARKING	WORK ZONE PAVEMENT MARKING REMOVAL	PAINT PAVEMENT MARKING - LINE 4"	RAISED REFLECTIVE PAVEMENT MARKERS
	LIN FT	FEET	SQ FT	FEET	EACH
214+40 TO 218+25	385	115	13	1251	5
218+25 TO 246+55	2830	845	96	6188	36
TOTALS		960	110	7440	41

PAVING SCHEDULE

STATION TO STATION	LENGTH	AVERAGE PAVEMENT WIDTH	AREA	BITUMINOUS MATERIALS (PRIME COAT)	AGGREGATE (PRIME COAT)	TEMPORARY RAMP	BITUMINOUS SURFACE REMOVAL 1 1/2"	AGGREGATE SHOULDERS, TYPE B	BITUMINOUS SHOULDERS SUPERPAVE 6 1/2"	BITUMINOUS CONCRETE SURFACE COURSE, SUPERPAVE, MIX "C", N50
	LIN FT	FEET	SQ YD	GAL	TON	SQ YD	SQ YD	TON	SQ YD	TON
214+40 TO 214+45	5	26	14	1	0.03	16	14	0.2		1
214+45 TO 235+85	2140	26	6182	620	13.7		6193	78.8		522
235+85 TO 236+85	100	24	267	27	0.6		267	3.8		23
236+85 TO 246+50	965	22	2359	236	5.2		2363	26.8	50	199
246+50 TO 246+55	5	22	12	1	0.03	14	12	0.2		1
LT 236+80 TO LT 238+30	150	3	50	5	0.1					4
TOTALS				890	20	30	8850	110	50	750

PLOT DATE = 2/9/2005
FILE NAME = #FILE#
PLOT SCALE = #SCALE#
REFERENCE = #REF#

REVISIONS	
NAME	DATE

ILLINOIS DEPARTMENT OF TRANSPORTATION

SCHEDULES

SCALE: VERT.
DATE:

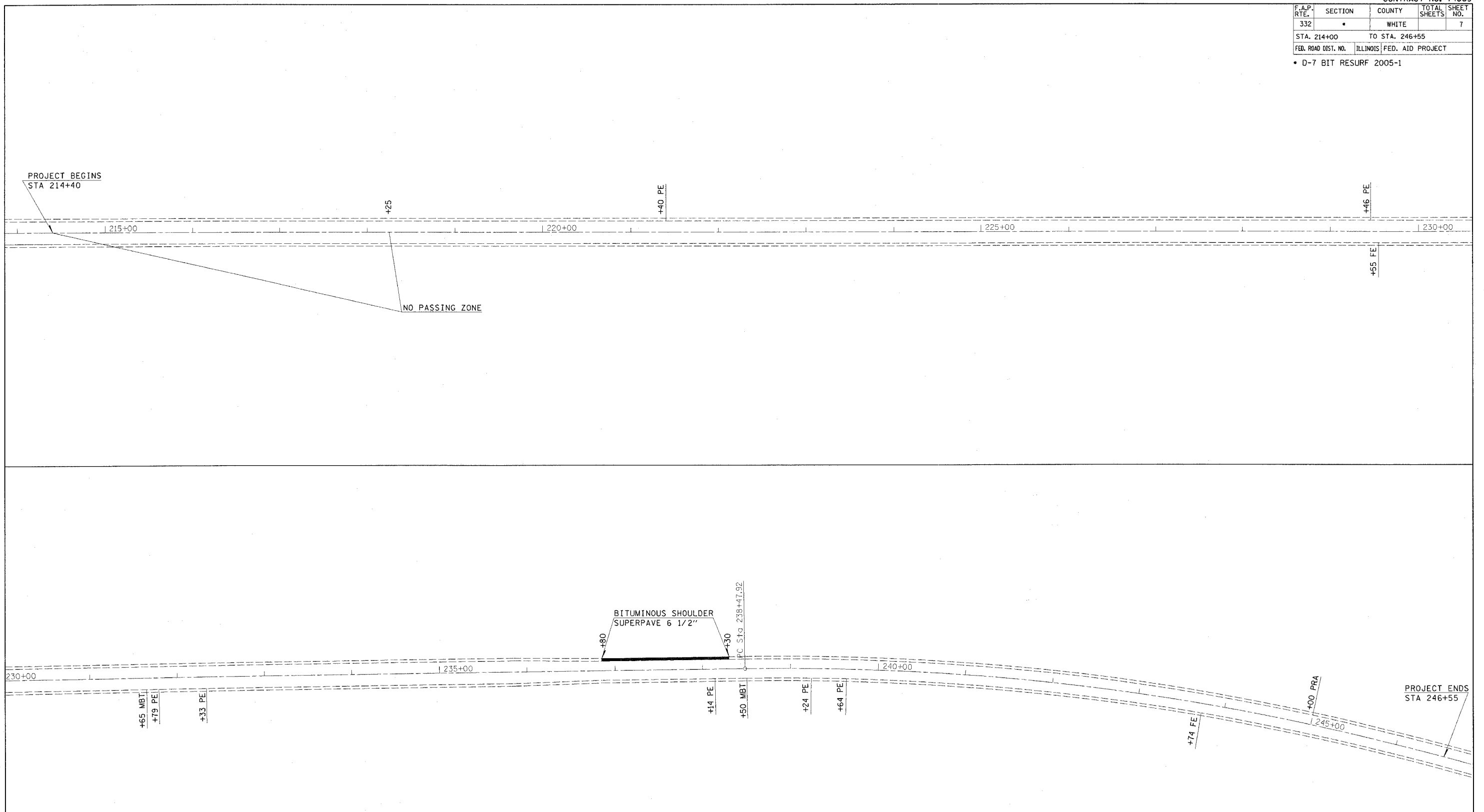
DRAWN BY
CHECKED BY

teasleyck
2/9/2005
c:\projects\74069d\05004pa.dgn
TYP

CONTRACT NO. 74069

F.A.P. RTE.	SECTION	COUNTY	TOTAL SHEETS	SHEET NO.
332	*	WHITE		7
STA. 214+00		TO STA. 246+55		
FED. ROAD DIST. NO.	ILLINOIS	FED. AID PROJECT		

D-7 BIT RESURF 2005-1



PLOT DATE : 2/9/2005
FILE NAME : #FILEL#
SCALE : #REF#
REFERENCE : #REF#

REVISIONS	
NAME	DATE

ILLINOIS DEPARTMENT OF TRANSPORTATION

PLAN SHEET
STA 214+00 TO STA 246+55

SCALE: VERT. _____
HORIZ. _____
DATE _____

DRAWN BY _____
CHECKED BY _____