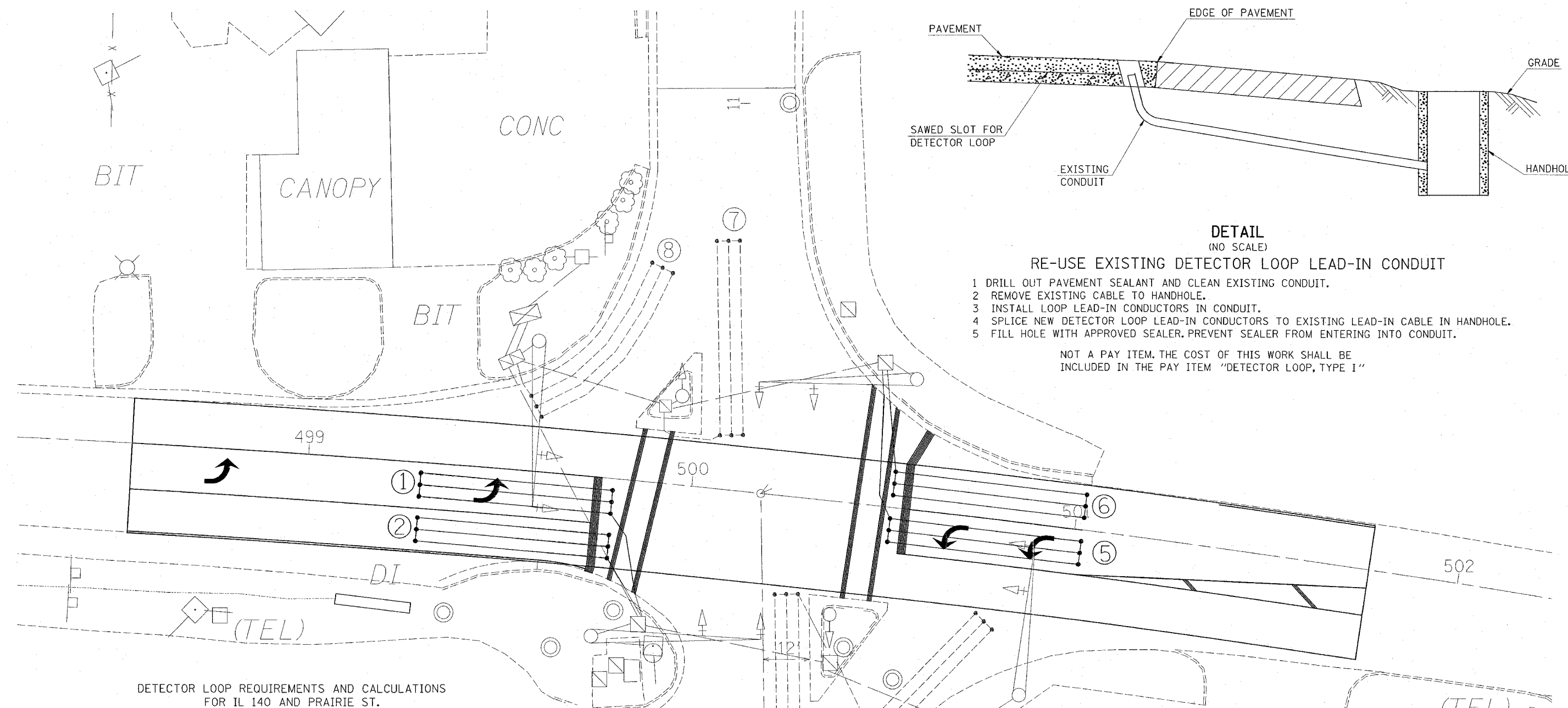


PLAN	SURVEYED	DATE
NOTE BOOK	PLOTTED	
NO. 1	RT. OF WAY CHECKED	
	CADD FILE NAME	



**DETAIL**  
(NO SCALE)  
**RE-USE EXISTING DETECTOR LOOP LEAD-IN CONDUIT**

- 1 DRILL OUT PAVEMENT SEALANT AND CLEAN EXISTING CONDUIT.
- 2 REMOVE EXISTING CABLE TO HANDHOLE.
- 3 INSTALL LOOP LEAD-IN CONDUCTORS IN CONDUIT.
- 4 SPLICE NEW DETECTOR LOOP LEAD-IN CONDUCTORS TO EXISTING LEAD-IN CABLE IN HANDHOLE.
- 5 FILL HOLE WITH APPROVED SEALER. PREVENT SEALER FROM ENTERING INTO CONDUIT.

NOT A PAY ITEM. THE COST OF THIS WORK SHALL BE INCLUDED IN THE PAY ITEM "DETECTOR LOOP, TYPE 1"

DETECTOR LOOP REQUIREMENTS AND CALCULATIONS FOR IL 140 AND PRAIRIE ST.

LOOP	PHASE (Ø)	LOOP SIZE(FT)	REQUIRED # OF TURNS	CALCULATED INDUCTANCE MICROHENRIES (µH)	CALCULATED RESISTANCE OHMS (Ω)
1. EB LT CD	1	6' X 50'	3-6-3	663.3	1.9
2. EB THRU CD	6	6' X 50'	3-6-3	810.2	2.1
3. NB THRU-LT CD	4	NA	NA	NA	NA
4. NB RT CD	4	NA	NA	NA	NA
5. WB LT CD	5	6' X 50'	3-6-3	820.1	2.4
6. WB THRU-LT CD	2	6' X 50'	3-6-3	817.2	2.3
7. SB THRU-LT CD	8	NA	NA	NA	NA
8. SB RT CD	8	NA	NA	NA	NA

THE ABOVE VALUES ARE CALCULATED OF COMBINED LOOP AND LEAD-IN INDUCTANCE AND RESISTANCE. ACTUAL MEASURED VALUES SHOULD BE WITHIN +/- 20% OF THESE VALUES.



REVISIONS	
NAME	DATE

ILLINOIS DEPARTMENT OF TRANSPORTATION  
**DETECTOR LOOP REPLACEMENT PLAN**  
LOCATION 2  
IL 140 AND PRAIRIE STREET  
FAP 785  
SECTION 132-31, 133RS-5  
MADISON COUNTY

DRAWN BY: \_\_\_\_\_

2/8/2005 3:53:47 PM Tuesday February 08, 2005 @ 3:53:47 PM at \\projects\mva\m067694\electrical\spain067694.dgn v1-63