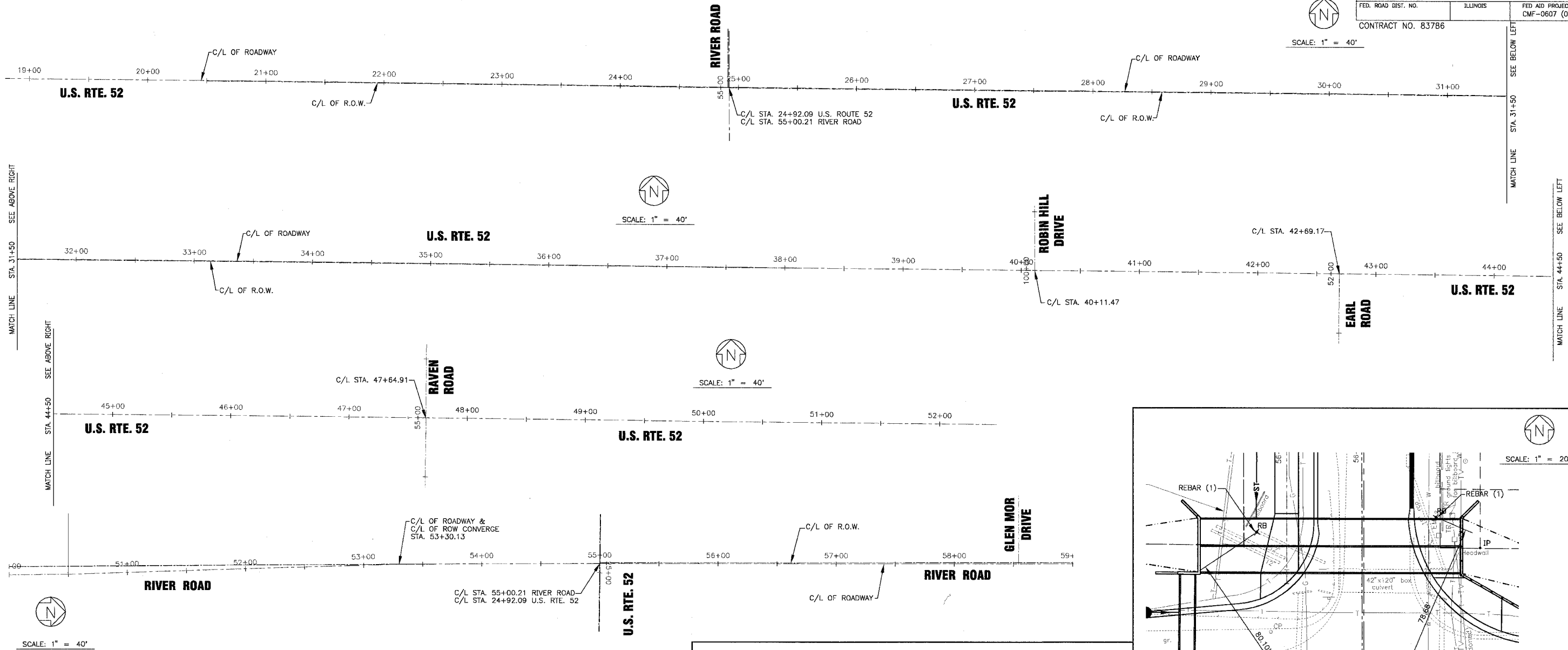


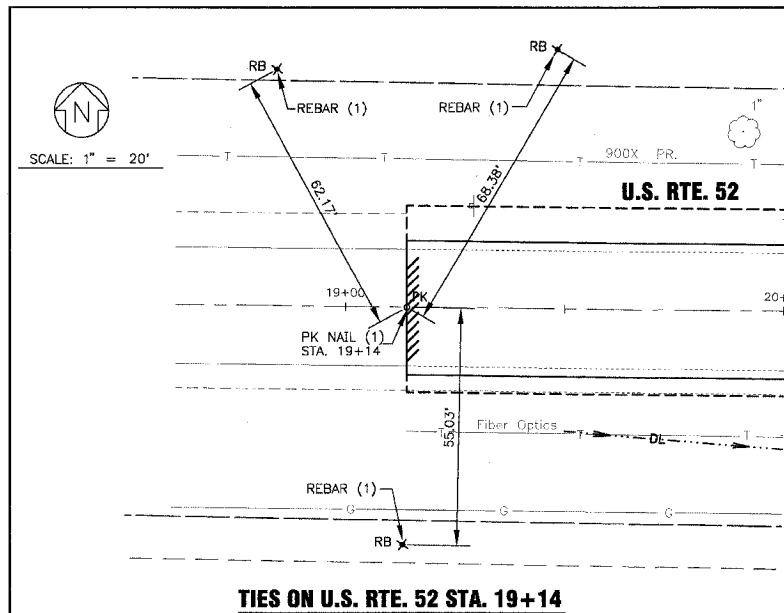
F.A.P. ROUTE NO.	SECTION	COUNTY	TOTAL SHEETS	SHEET NO.
0607	01-00014-00-FP	WILL	85	10
STA.	TO STA.			
FED. ROAD DIST. NO.	ILLINOIS	FED AID PROJECT CMF-0607 (070)		

CONTRACT NO. 83786

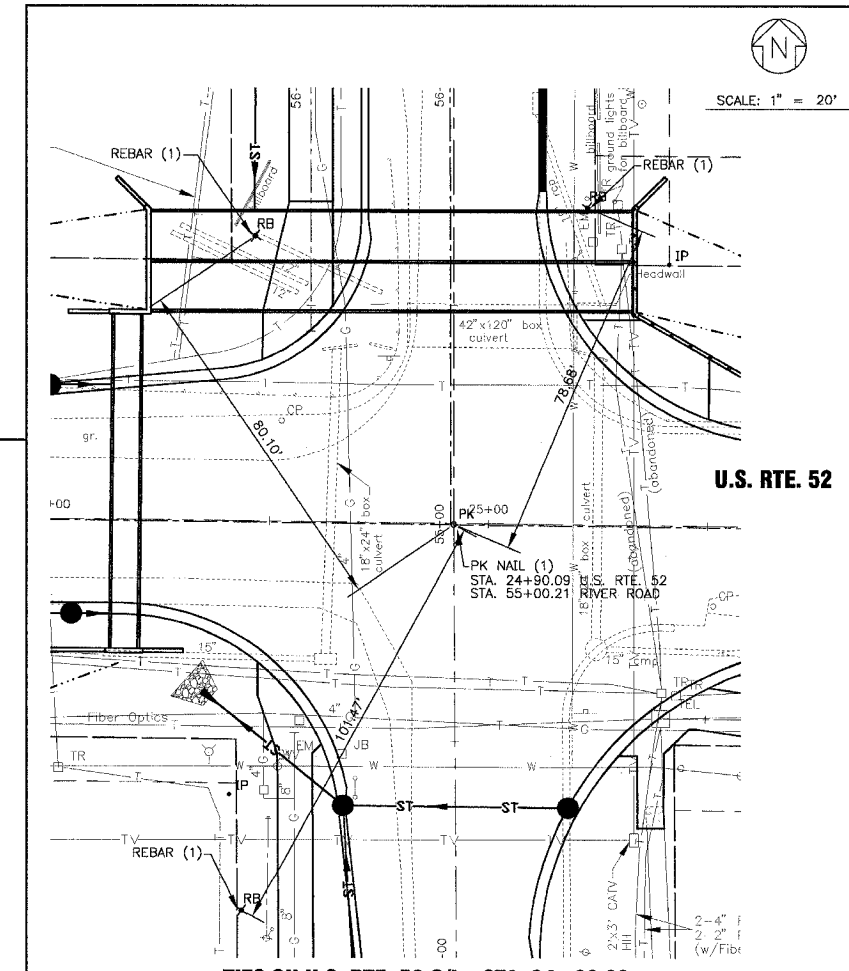
SCALE: 1" = 40'



SCALE: 1" = 40'



TIES ON U.S. RTE. 52 STA. 19+14



TIES ON U.S. RTE. 52 C/L - STA. 24+90.09
TIES ON RIVER ROAD C/L - STA. 55+00.21

BENCHMARK LIST

- BM#6 SQUARE CUT IN TOP OF HEADWALL AT SOUTHWEST CORNER OF HEADWALL AT NORTHEAST CORNER OF RTE. 52 AND RIVER ROAD. ELEV. = 618.19
- BM#7 "X" MARKED IN WEST HEADWALL AT DRIVEWAY 15± 60' LT. AND 3± FROM SOUTHEAST OF HEADWALL. ELEV. = 616.15
- BM#8 PAINTED "X" ON CONCRETE PAD BY PHONE CABINET SOUTHEAST CORNER OF EARL AND RTE. 52 NEAR NORTH-WEST CORNER OF PAD. ELEV. = 615.21

I:\SHEDDY\010665\DWG\510665-115.dwg
 Plotted: 12-15-04 @ 10:11am By: 231kub
 Copyright © 2004, By Baxter & Woodman, Inc.
 State of Illinois - Professional Design Firm
 License No. 164-001121 - Expires 4-30-05

CONSULTANTS	REV. NO.	DATE	DESCRIPTION
	1	12-21-04	PER I.D.O.T. REVIEW

* REFER TO EQUIPMENT MANUFACTURER'S SHOP DRAWINGS



Baxter & Woodman
 Crystal Lake, Illinois 815.459.1260
 Burlington, Wisconsin 262.763.7834
 Mokena, Illinois 708.478.2090
 DeKalb, Illinois 815.787.3111
 Crystal Lake, Illinois 847.223.5088
 Rockford, Illinois 815.489.1551

**VILLAGE OF SHOREWOOD, ILLINOIS
 U.S. ROUTE 52 IMPROVEMENTS**

**ALIGNMENT AND TIES
 AND BENCHMARK LIST
 U.S. RTE. 52 AND RIVER ROAD**

DESIGNED BY	LDH	SCALE	HORIZ: 1"=40'
DRAWN BY	UKB	PROJECT NO.	010665
CHECKED BY	LDH	SHEET NO.	
DATE	10-05-04		