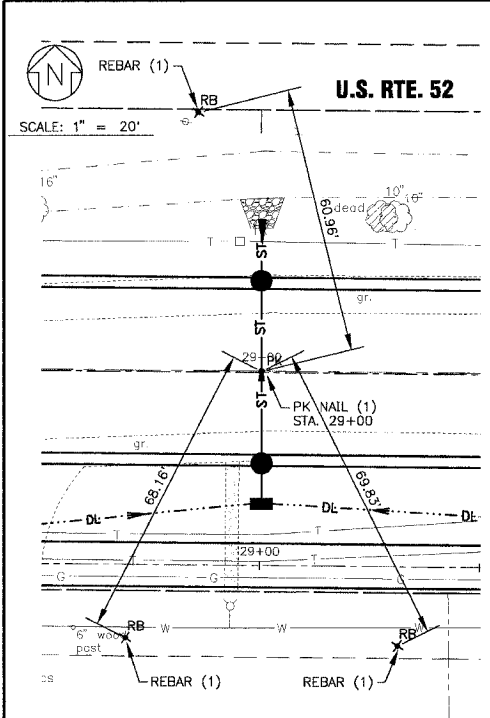
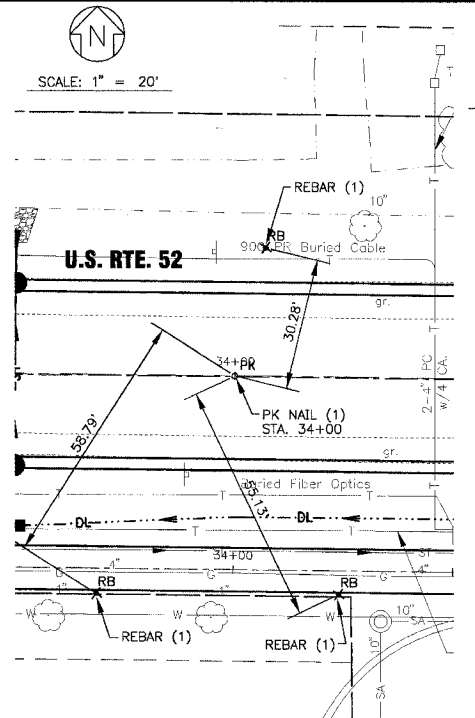


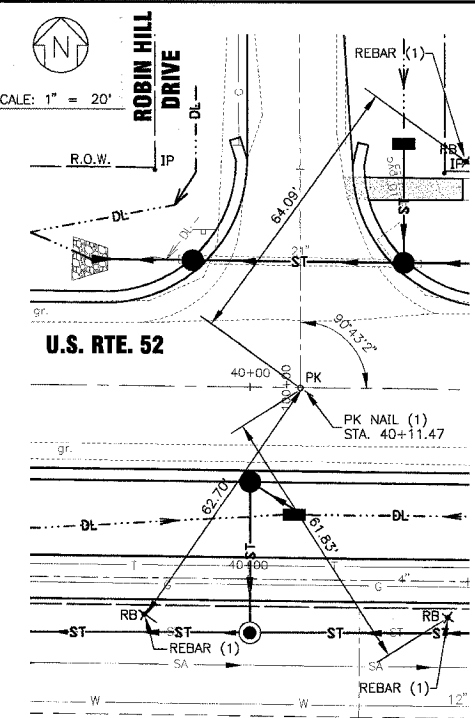
F.A.P. ROUTE NO.	SECTION	COUNTY	TOTAL SHEETS	SHEET NO.
0607	01-00014-00-FP	WILL	85	11
STA.	TO STA.	ILLINOIS	FED AID PROJECT	
			CMF-0607 (070)	
CONTRACT NO. 83786				



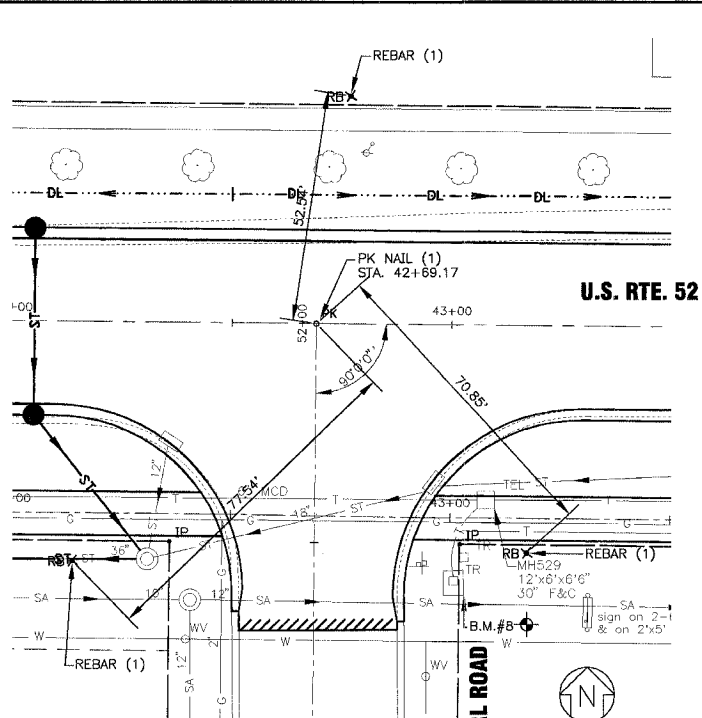
TIES ON U.S. RTE. 52 STA. 29+00



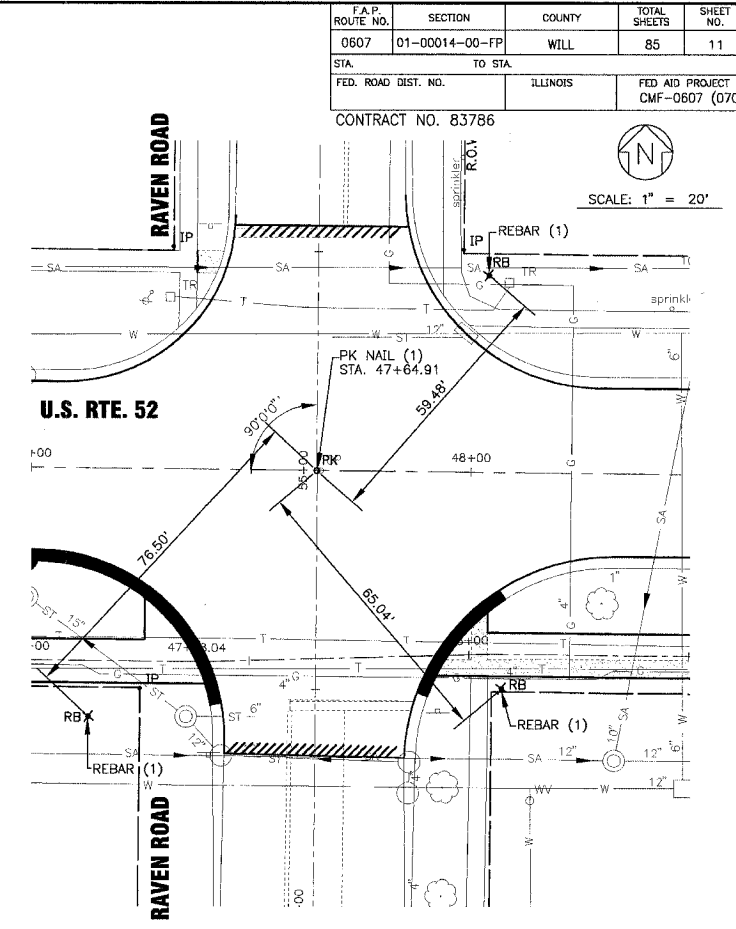
TIES ON U.S. RTE. 52 STA. 34+00



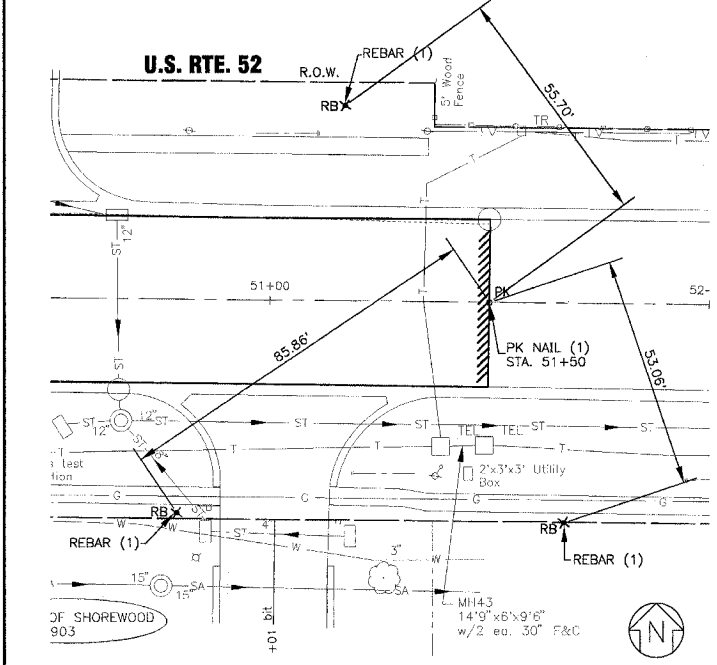
TIES ON U.S. RTE. 52 STA. 40+11.47



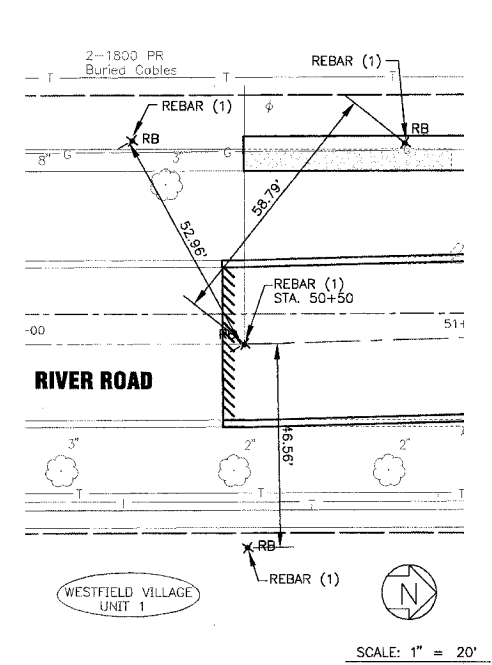
TIES ON U.S. RTE. 52 STA. 42+69.17



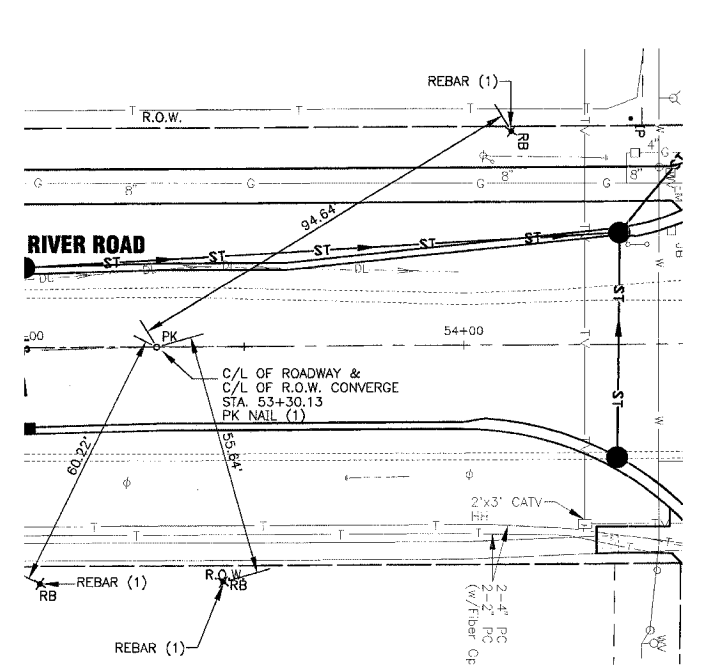
TIES ON U.S. RTE. 52 STA. 47+64.91



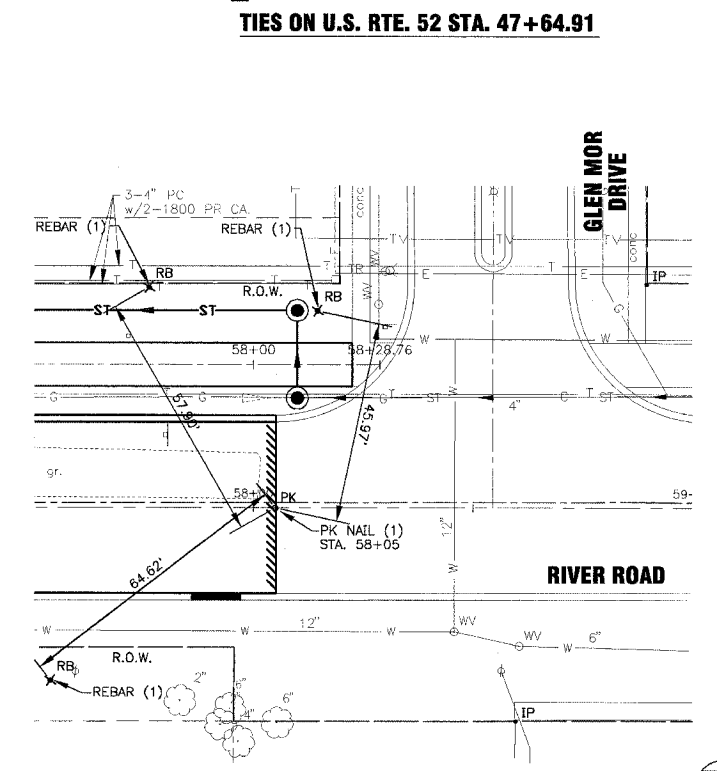
TIES ON U.S. RTE. 52 STA. 51+50



TIES ON RIVER ROAD STA. 50+50



TIES ON RIVER ROAD STA. 50+50



TIES ON RIVER ROAD STA. 58+05

I:\SHRWD\010665\DWGS\10665-TIES.dwg
 Plotted: 12-15-04 @ 10:12am By: 231ukb
 Copyright © 2004, By: Baxter & Woodman, Inc.
 State of Illinois - Professional Design Firm
 License No. - 154-001121 - Expires 4-30-05

CONSULTANTS	REV. NO.	DATE	DESCRIPTION
	1	12-21-04	PER I.D.O.T. REVIEW

DRAWING FILE: PLOTTED BY:

BAXTER & WOODMAN
 Consulting Engineers

Baxter & Woodman
 Crystal Lake, Illinois 815.459.1260
 Burlington, Wisconsin 262.763.7834
 Mokena, Illinois 708.478.2090
 DeKalb, Illinois 815.787.3111
 Grayslake, Illinois 847.223.5088
 Rockford, Illinois 815.489.1551

VILLAGE OF SHOREWOOD, ILLINOIS
U.S. ROUTE 52 IMPROVEMENTS

ALIGNMENT AND TIES
ON U.S. ROUTE 52 AND
RIVER ROAD

DESIGNED BY	SCALE
LDH	HORIZ: 1" = 40'
DRAWN BY	PROJECT NO.
LKB	010665
CHECKED BY	SHEET NO.
LDH	11 OF 85
DATE	
10-05-04	