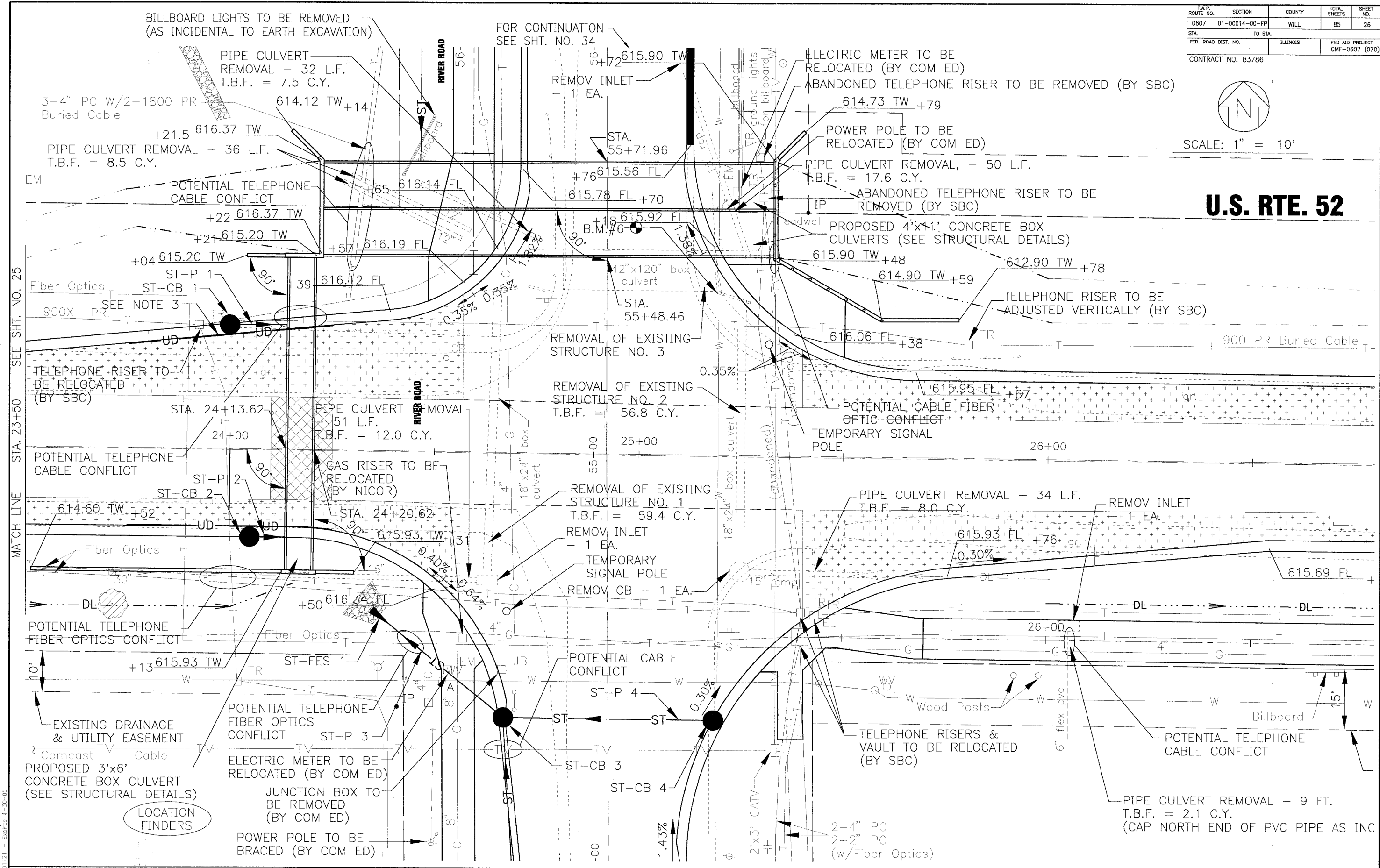


F.A.P. ROUTE NO.	SECTION	COUNTY	TOTAL SHEETS	SHEET NO.
0607	01-00014-00-FP	WILL	85	26
STA.	TO STA.	ILLINOIS	FED AID PROJECT	CMF-0607 (070)
FED. ROAD DIST. NO.		CONTRACT NO. 83786		



SCALE: 1" = 10'

U.S. RTE. 52



CONSULTANTS	REV. NO.	DATE	DESCRIPTION
	1	12-21-04	PER I.D.O.T. REVIEW



Baxter & Woodman
 Crystal Lake, Illinois 815.459.1260
 Burlington, Wisconsin 262.763.7834
 Mokena, Illinois 708.478.2090
 DeKalb, Illinois 815.797.3111
 Graylake, Illinois 847.223.5088
 Rockford, Illinois 815.489.1561

VILLAGE OF SHOREWOOD, ILLINOIS
U.S. ROUTE 52 IMPROVEMENTS

US. ROUTE 52
STA. 23+50 TO STA. 29+00
DRAINAGE & UTILITY PLAN

DESIGNED BY	LDH	SCALE	HORIZ: 1"=10'
DRAWN BY	UKB	PROJECT NO.	010665
CHECKED BY	LDH	SHEET NO.	
DATE	10-05-04		

\\SHREWD\010665\DWG\10665-PRF.dwg
 Plotted: 10-05-04 10:53am By: 23:ukb
 Copyright © 2004, By Baxter & Woodman, Inc.
 State of Illinois - Professional Design Firm
 License No. - 04-001721 - Expires 4-30-05

* REFER TO EQUIPMENT MANUFACTURER'S SHOP DRAWINGS DRAWING FILE: PLOTTED BY: