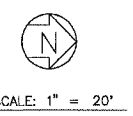
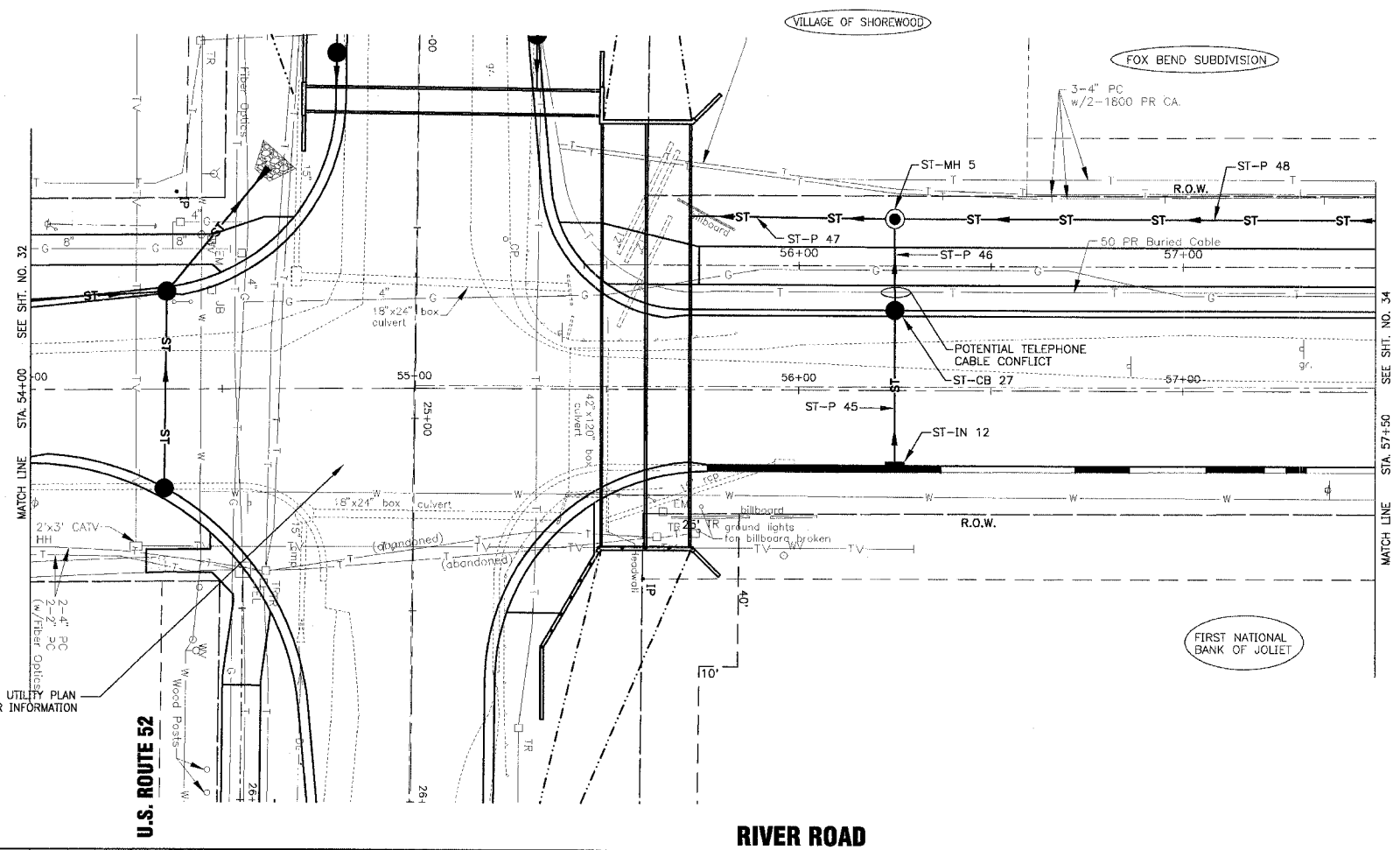


F.A.P. ROUTE NO.	SECTION	COUNTY	TOTAL SHEETS	SHEET NO.
0607	01-00014-00-FP	WILL	85	33
STA.	TO STA.			
FED. ROAD DIST. NO.	ILLINOIS	FED. AID PROJECT	CMF-0607 (070)	
CONTRACT NO. 83786				



MANHOLES

ST-MH 5
 41 L.F. OF 12" STRG. CL A, TY 1 FR CL
 4' DIA.
 STA. 56+25, 45' LT.
 RIM = 614.70±
 INV. 611.39 12' E
 INV. 611.40 12' N
 INV. 611.19 15' S

STORM SEWER PIPES

ST-P 45
 41 L.F. OF 12" STRG. CL A, TY 1 @ 1.30%
 T.B.F. = 11.4 C.Y.

ST-P 46
 25 L.F. OF 12" STRG. CL A, TY 2 @ 1.30%
 T.B.F. = 7.0 C.Y.

ST-P 47
 53 L.F. OF 15" STRG. CL A, TY 1 @ 0.35%
 T.B.F. = 13.5 C.Y.

ST-P 48
 185 L.F. OF 12" STRG. CL A, TY 2 @ 0.70%
 T.B.F. = 61.0 C.Y.

INLETS

ST-IN 12
 INLET, TY A, TY 11 F&G
 STA. 56+25 21' RT.
 FL = 615.26
 INV. 612.25 12' W

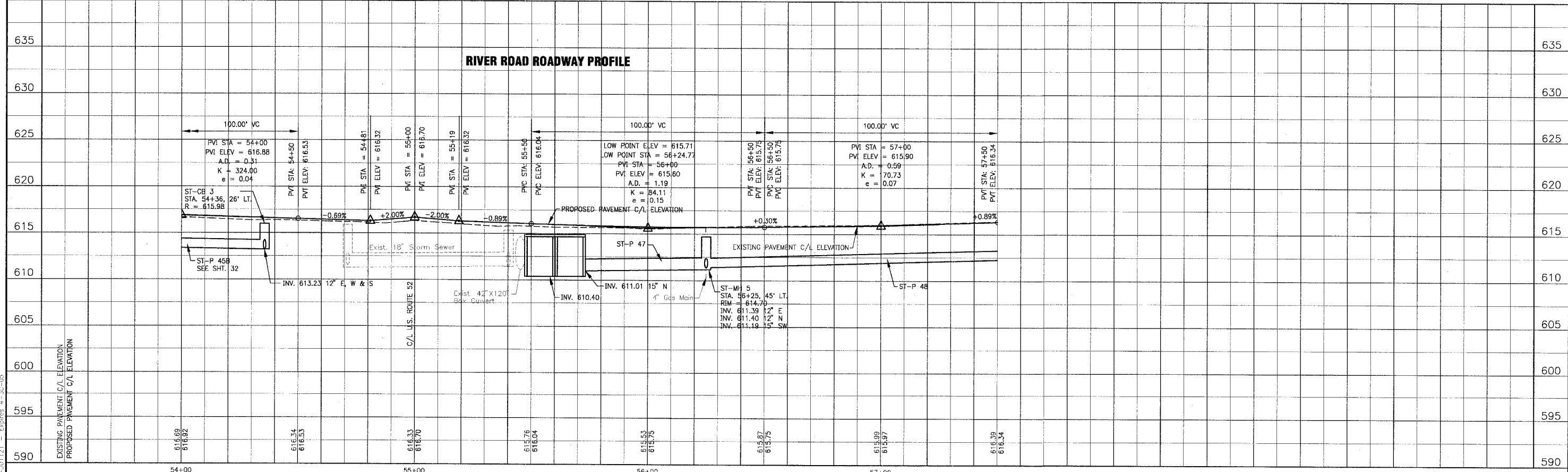
CATCH BASINS

ST-CB 27
 CATCH BASIN, TY C, TY 11 F&G
 2' DIA.
 STA. 56+25 21' LT.
 FL = 615.26
 INV. 611.72 12' E & W

- NOTE:
- FOR CONTINUATION SEE SHT. NO. 23 FOR GEOMETRIC INFORMATION.
 - DATUM CORRELATION: BAXTER & WOODMAN, INC. SURVEY DATA SHOULD BE ADJUSTED BY -0.12' TO MATCH FEMA REFERENCE MARK DATUM.

SEE U.S. RTE. 52 DRAINAGE AND UTILITY PLAN SHT. NO. 26A FOR STORM SEWER INFORMATION IN INTERSECTION.

RIVER ROAD



T:\SHR\01\0665\DWG\10665-EPF.dwg
 Plotted: 12-15-04 @ 11:07am by 331ukb
 Copyright © 2004 by Baxter & Woodman, Inc.
 State of Illinois - Professional Design Firm
 License No. - 184-001121 - Expires 4-30-05

CONSULTANTS	REV. NO. DATE DESCRIPTION	1 12-21-04 PER I.D.O.T. REVIEW	BAXTER & WOODMAN Consulting Engineers	Baxter & Woodman Crystal Lake, Illinois 815.459.1280 Burlington, Wisconsin 262.768.7834 Makeno, Illinois 708.478.2090 DeKalb, Illinois 815.787.3111 Crayslake, Illinois 847.223.6088 Rockford, Illinois 815.489.1551	VILLAGE OF SHOREWOOD, ILLINOIS U.S. ROUTE 52 IMPROVEMENTS	RIVER ROAD STA. 54+00 TO STA. 57+50 DRAINAGE & UTILITY PLAN	DESIGNED BY LDH DRAWN BY UKB CHECKED BY LDH DATE 10-05-04	SCALE VERT: 1"=5' HORIZ: 1"=20' PROJECT NO. 010665 SHEET NO. 33 OF 85
-------------	---------------------------	--------------------------------	--	---	--	--	--	--