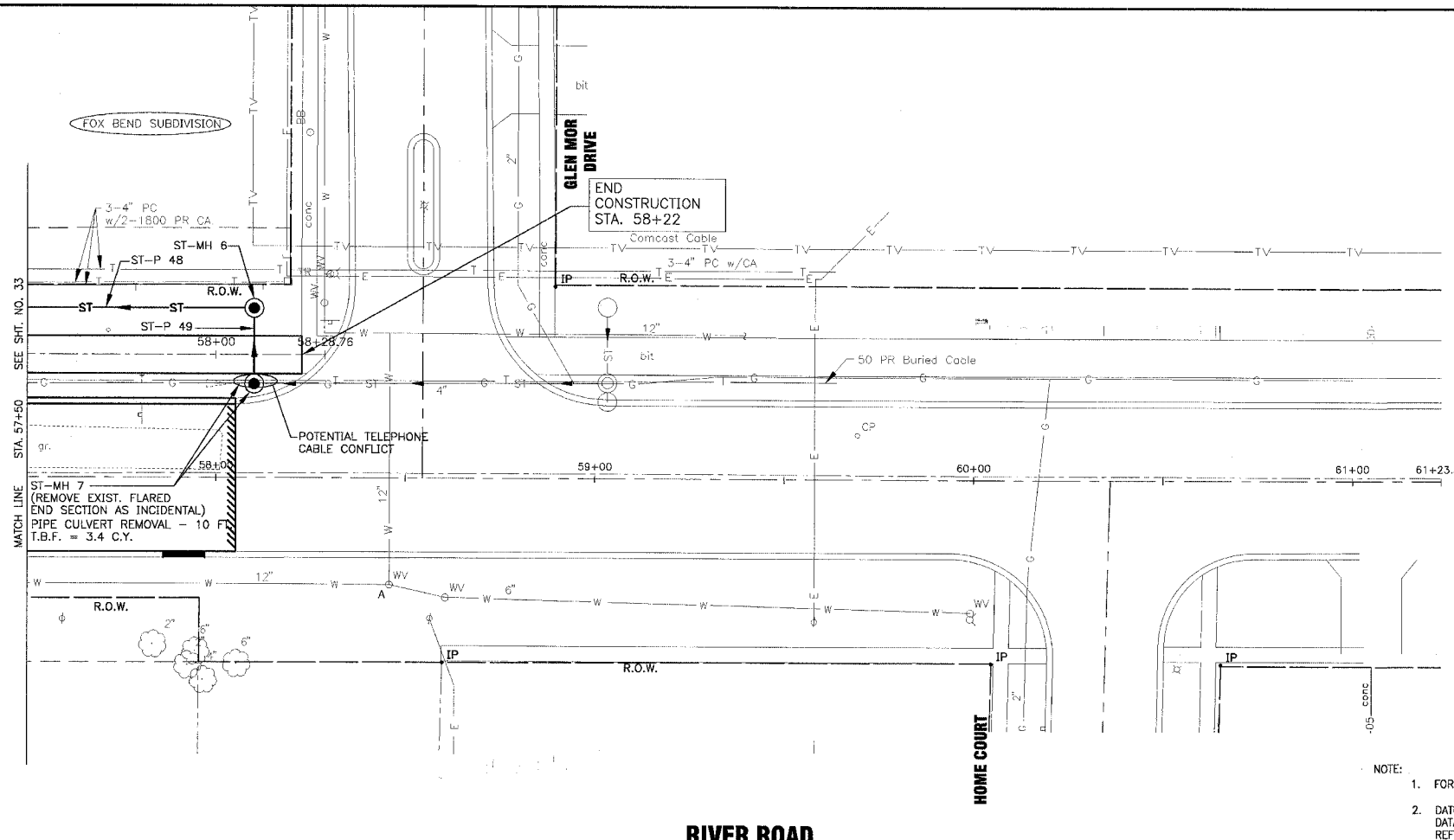


F.A.P. ROUTE NO.	SECTION	COUNTY	TOTAL SHEETS	SHEET NO.
0607	01-00014-00-FP	WILL	85	34
STA.	TO STA.		ILLINOIS	
FED. ROAD DIST. NO.	ILLINOIS		FED. AID PROJECT CMF-0607 (070)	

CONTRACT NO. 83786



SCALE: 1" = 20'

MANHOLES

ST-MH 6
MANHOLE, TY A, TY 1 FR CL
4' DIA.
STA. 58+10, 45' LT.
RIM = 617.15±
INV. 612.69 12" E & S

ST-MH 7
MANHOLE, TY A, TY 1 FR CL
4' DIA.
STA. 58+10, 25' LT.
RIM = 616.85±
INV. 612.93 12" N
INV. 612.83 12" W

STORM SEWER PIPES

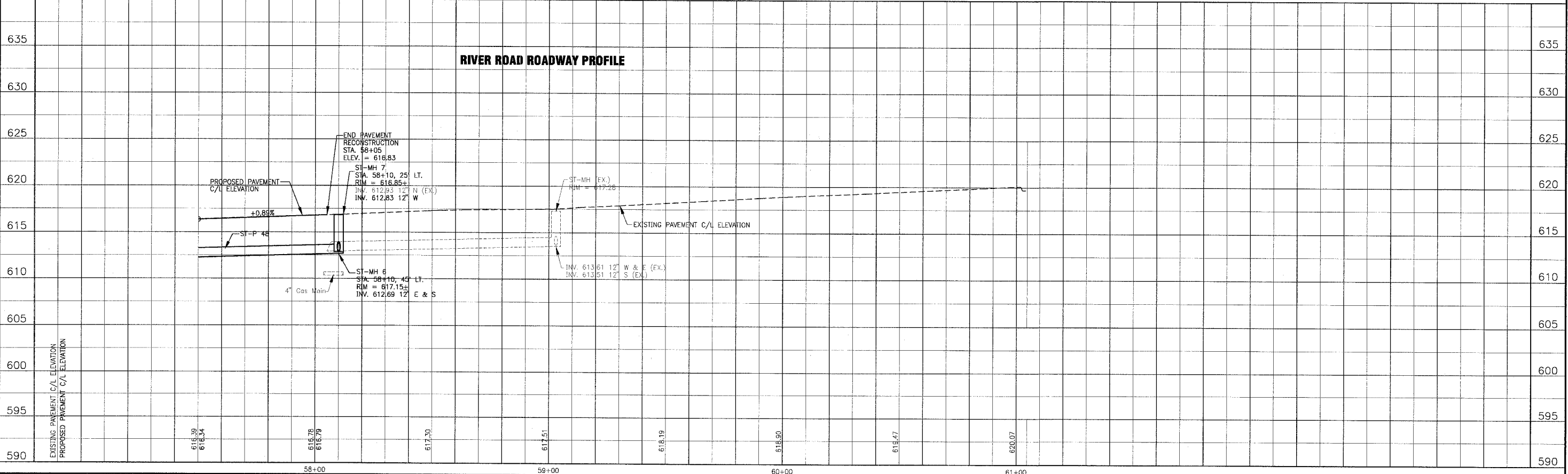
ST-P 48
SEE SHT. 33 FOR INFORMATION

ST-P 49
20 L.F. OF 12" STRG. CL A, TY 2 @ 0.70%
T.B.F. = 7.2 C.Y.

- NOTE:
- FOR CONTINUATION SEE SHT. NO. 24 FOR GEOMETRIC INFORMATION.
 - DATUM CORRELATION: BAXTER & WOODMAN, INC. SURVEY DATA SHOULD BE ADJUSTED BY -0.12' TO MATCH FEMA REFERENCE MARK DATUM.

RIVER ROAD

RIVER ROAD ROADWAY PROFILE



I:\SHERMAN\010665\DWG\10665-PRF.dwg
 Plotted: 12-15-04 @ 11:03am by: 231ulb
 Copyright © 2004, by Baxter & Woodman, Inc.
 State of Illinois Professional Design Firm
 License No. 184-001021 - Expires 11-30-05

CONSULTANTS	REV. NO.	DATE	DESCRIPTION
	1	12-21-04	PER I.D.O.T. REVIEW

* REFER TO EQUIPMENT MANUFACTURER'S SHOP DRAWINGS

DRAWING FILE: PLOTTED BY:

BAXTER & WOODMAN
Consulting Engineers

Baxter & Woodman
Crystal Lake, Illinois 815.459.1280
Burlington, Wisconsin 262.763.7834
Mokena, Illinois 708.478.2090
DeKalb, Illinois 815.787.3111
Crayslake, Illinois 847.223.5088
Rockford, Illinois 815.489.1551

VILLAGE OF SHOREWOOD, ILLINOIS
U.S. ROUTE 52 IMPROVEMENTS

RIVER ROAD
STA. 57+50 TO STA. 61+00
DRAINAGE & UTILITY PLAN

DESIGNED BY	LDH	SCALE VERT: 1"=5'
DRAWN BY	LDH	HORIZ: 1"=20'
CHECKED BY	LDH	PROJECT NO. 010665
DATE	10-05-04	SHEET NO.

34 OF 85