

F.A.P. ROUTE NO.	SECTION	COUNTY	TOTAL SHEETS	SHEET NO.
0607	01-00014-00-FP	WILL	85	50
STA.	TO STA.	ILLINOIS	FED. AID PROJECT	
			CMF-0607 (070)	

CONTRACT NO. 83786



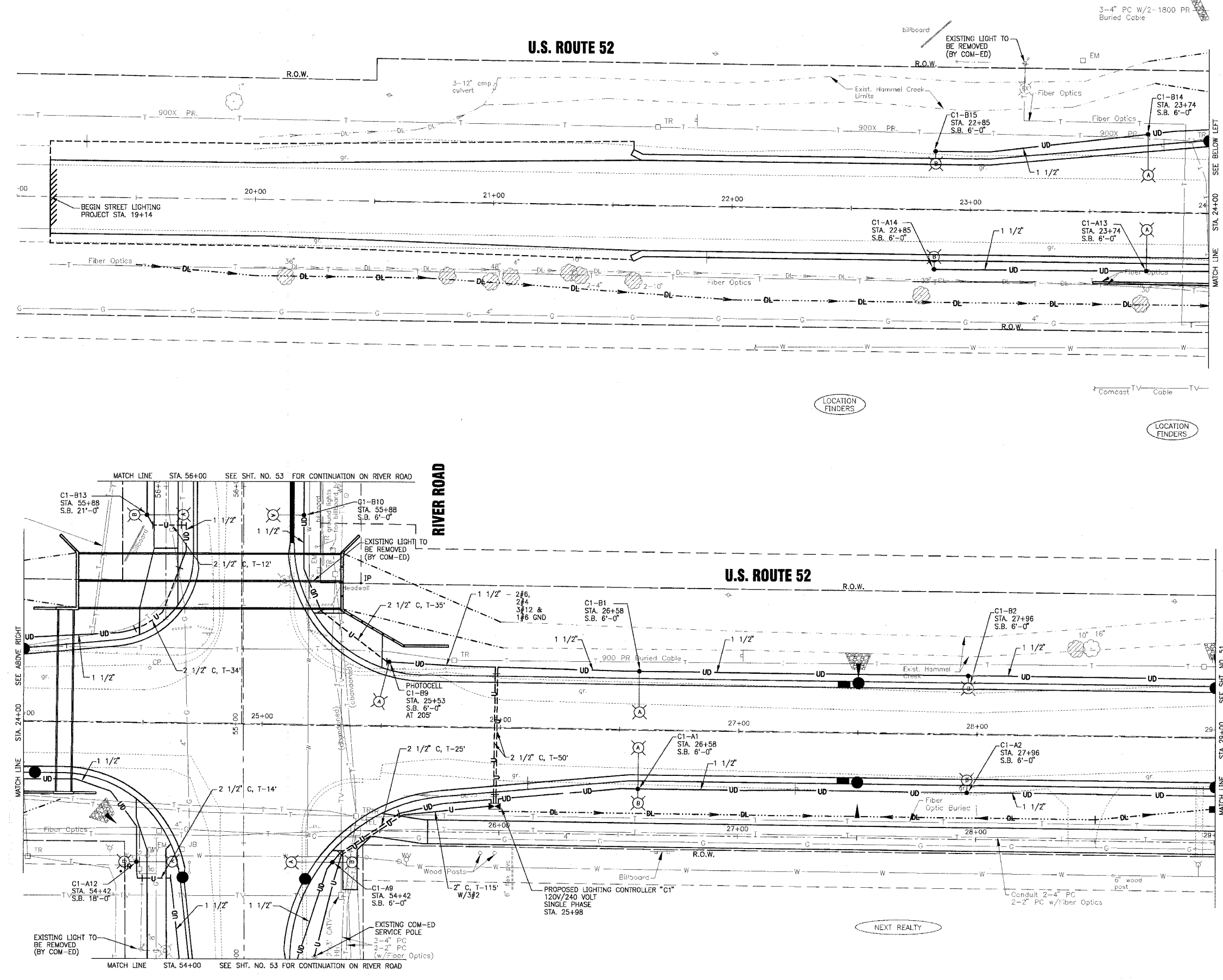
SCALE: 1" = 20'

LEGEND

- 2 1/2" C, P-20'
- 2 1/2" C, T-20'
- 1 1/2" UD
- LIGHT POLE WITH 310 WATT HPS LUMINAIRE MOUNTED AT 35' MOUNTING HEIGHT
- LIGHT POLE WITH 70 WATT HPS LUMINAIRE MOUNTED AT 16' MOUNTING HEIGHT
- LIGHTING CONTROLLER C1, CIRCUIT B1 SETBACK 6'-0" FROM FRONT OF CURB
- EXISTING LIGHTING CONTROLLER
- LIGHTING CONTROLLER



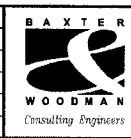
SCALE: 1" = 20'



A. SHAWBY 010666A CIVIL ENGINEER, LICENSE NO. 011-00014-00-FP
 Printed 12-22-04 @ 3:11pm By: J. Woodman, Inc.
 Copyright © 2004, By: Baxter & Woodman, Inc.
 State of Illinois - Professional Design Firm
 License No. 184-001121 - Expires 4-30-05

CONSULTANTS	REV. NO.	DATE	DESCRIPTION
	1	11-29-04	PER I.D.O.T. REVIEW
	2	12-21-04	PER I.D.O.T. REVIEW

DRAWING FILE: _____ PLOTTED BY: _____



Baxter & Woodman
 Crystal Lake, Illinois 815.459.1280
 Burlington, Wisconsin 262.763.7834
 Mokena, Illinois 708.478.8090
 DeKalb, Illinois 815.787.3111
 Graystone, Illinois 847.223.5088
 Rockford, Illinois 815.489.1551

VILLAGE OF SHOREWOOD, ILLINOIS
U.S. ROUTE 52 IMPROVEMENTS

U.S. ROUTE 52
STREET LIGHTING
STA. 19+00 TO STA. 29+00

DESIGNED BY	JLR	SCALE	HORIZ: 1"=20'
DRAWN BY	UKB	PROJECT NO.	010665
CHECKED BY	JLR	SHEET NO.	50 OF 85
DATE	10-05-04		



"LICENSE EXPIRES 11-30-05"