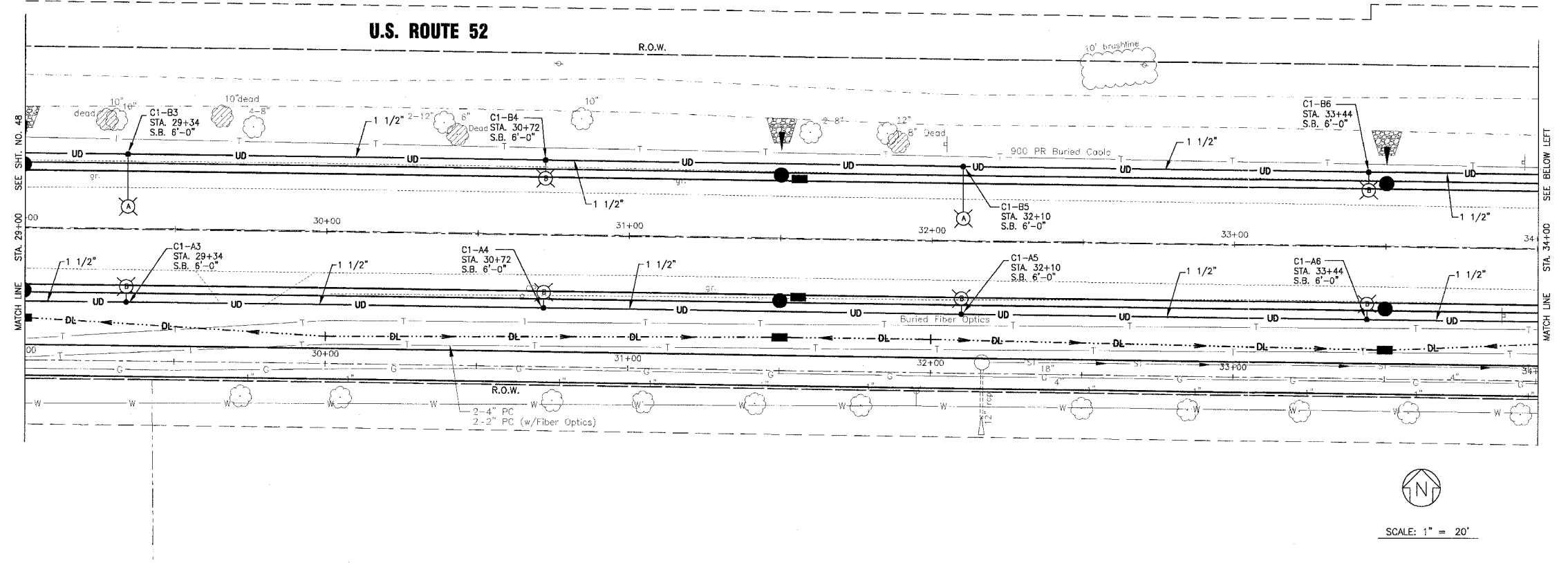
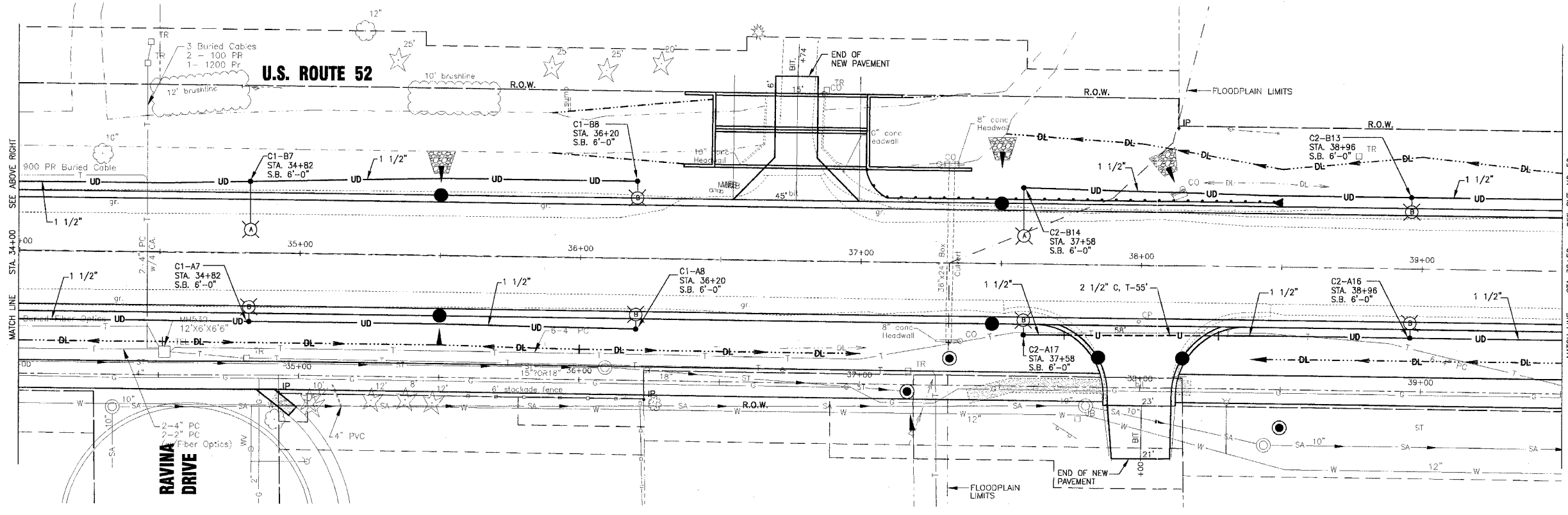


F.P. ROUTE NO.	SECTION	COUNTY	TOTAL SHEETS	SHEET NO.
0607	01-00014-00-FP	WILL	85	51
STA.	TO STA.	ILLINOIS		FED AID PROJECT
				CMF-0607 (070)
CONTRACT NO. 83786				



- LEGEND**
- 2 1/2" C, P-20'
 - 2 1/2" C, T-20'
 - 1 1/2" UD
 - LIGHT POLE WITH 310 WATT HPS LUMINAIRE MOUNTED AT 35' MOUNTING HEIGHT
 - LIGHT POLE WITH 70 WATT HPS LUMINAIRE MOUNTED AT 16' MOUNTING HEIGHT
 - LIGHTING CONTROLLER C1, CIRCUIT B1 SETBACK 6'-0" FROM FRONT OF CURB
 - EXISTING LIGHTING CONTROLLER
 - LIGHTING CONTROLLER



- LEGEND**
- SCALE: 1" = 20'

C:\Land Projects\2004\shw\010665\dwg\10665LGH1.dwg
 Plotted: 12-28-04 @ 2:33pm By: 231ukb
 Copyright © 2004, by Baxter & Woodman, Inc.
 State of Illinois Professional Design Firm
 License No. 184-001721 - Expires 4-30-05

CONSULTANTS	REV. NO.	DATE	DESCRIPTION
	1	11-29-04	PER I.D.O.T. REVIEW
	2	12-21-04	PER I.D.O.T. REVIEW

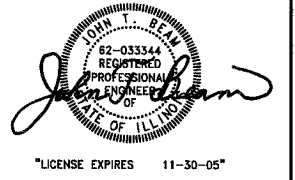
* REFER TO EQUIPMENT MANUFACTURER'S SHOP DRAWINGS
 DRAWING FILE: PLOTTED BY:



Baxter & Woodman
 Crystal Lake, Illinois 815.459.1260
 Burlington, Wisconsin 262.763.7834
 Mokena, Illinois 708.478.2090
 DeKalb, Illinois 815.787.3111
 Grayslake, Illinois 847.223.5088
 Rockford, Illinois 815.489.1551

VILLAGE OF SHOREWOOD, ILLINOIS
U.S. ROUTE 52 IMPROVEMENTS

U.S. ROUTE 52
STREET LIGHTING
STA. 29+00 TO STA. 39+50



DESIGNED BY	JLR	SCALE	HORIZ: 1"=20'
DRAWN BY	UKB	PROJECT NO.	010665
CHECKED BY	JLR	SHEET NO.	51 OF 85
DATE	10-05-04		