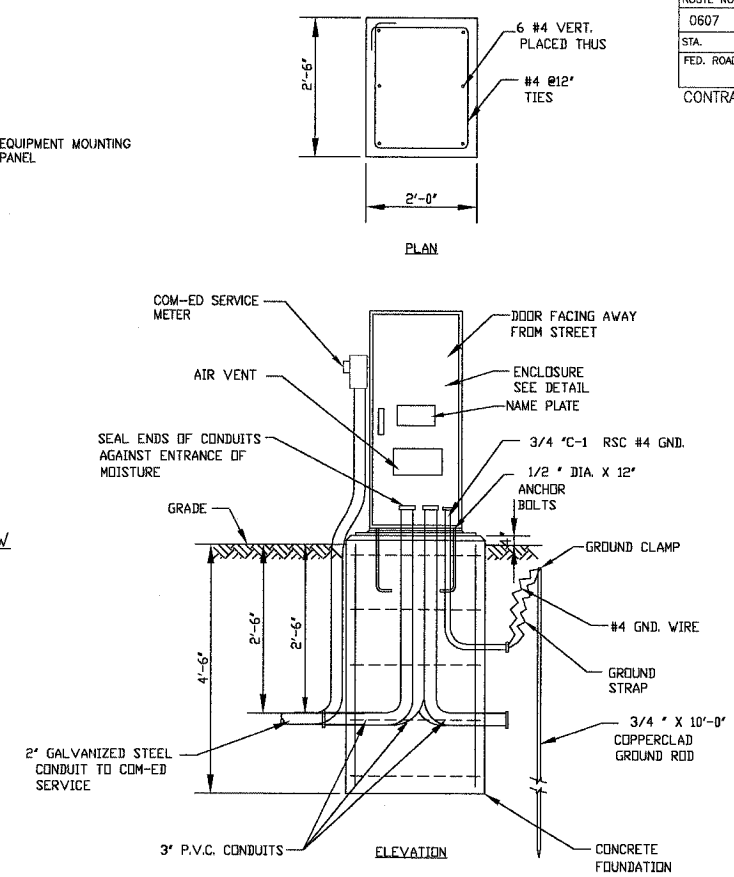
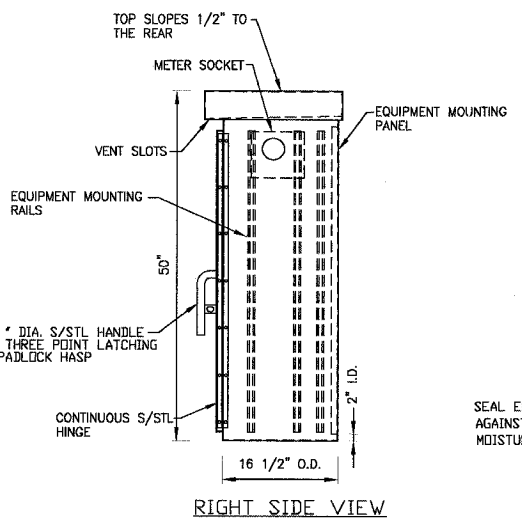
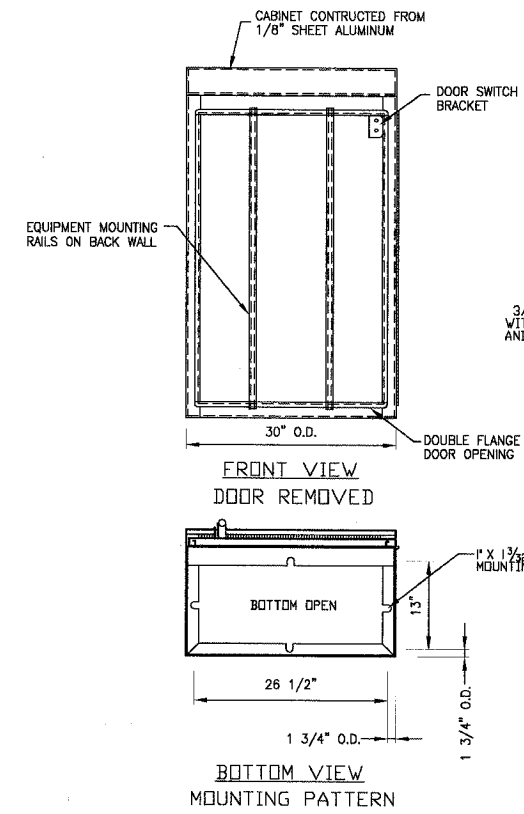
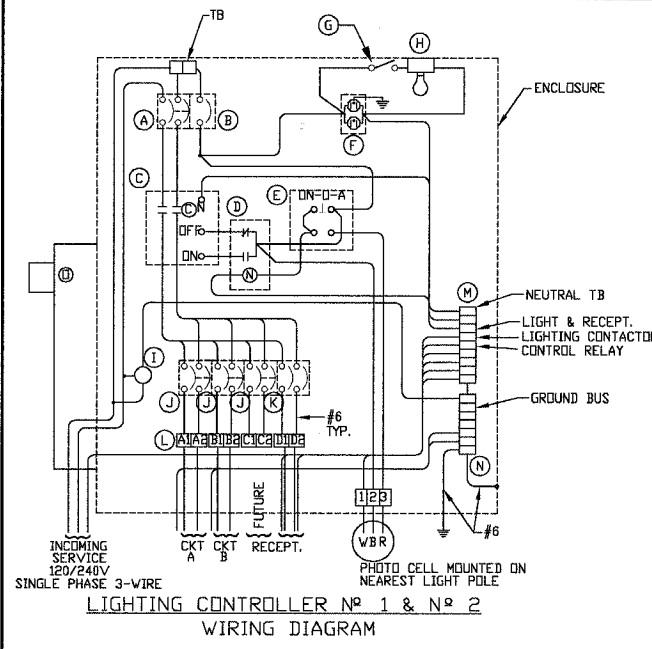


F.A.P. ROUTE NO.	SECTION	COUNTY	TOTAL SHEETS	SHEET NO.
0607	01-00014-00-FP	WILL	85	54
STA.	TO STA.			
FED. ROAD DIST. NO.	ILLINOIS		FED AID PROJECT CMF-0607 (070)	
CONTRACT NO. 83786				

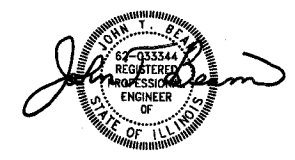


LIGHTING CONTROLLER AND FOUNDATION DETAIL  
NO SCALE

NOTES

- CABINET SHALL BE FABRICATED FROM 0.125-INCH SHEET ALUMINUM #3003H14, FORMED AND ARC WELDED ASSEMBLY.
- ALL SCREWS AND HARDWARE SHALL BE PLATED, GALVANIZED, OR MADE OF BRASS, ALUMINUM OR STAINLESS STEEL.
- NAME PLATE SHALL HAVE ENGRAVED 0.75-INCH HIGH LETTERS FILLED IN BLACK "STREET LIGHTING".
- CABINET SHALL BE PRIMED AND PAINTED AS SPECIFIED.
- ELECTRIC UTILITY METER BOX SHALL BE MOUNTED ON THE SIDE OF CONTROL CABINET AS SHOWN ON THE PANEL LAYOUT DIAGRAM.
- THE COMPLETED CONTROLLER SHALL BE UL LISTED AS AN INDUSTRIAL CONTROL PANEL UNDER UL508.
- METAL MOUNTING PANEL SHALL BE #10 GAUGE GALVANIZED SHEET STEEL FLANGED BACK 0.75-INCHES I.D. ON 4 SIDES.
- CIRCUIT BREAKERS AND CONTACTORS AND OTHER COMPONENTS SHALL BE MOUNTED ON 0.125-INCH THICK GLASTIC INSULATION BACK PANEL.
- ALL DEVICES SHALL BE FRONT REMOVABLE.
- BUS BAR SHALL HAVE 22 LUG TERMINALS SIZED TO ACCOMMODATE REQUIRED WIRE SIZES. NEUTRAL BUS SHALL BE PAINTED WHITE. GROUND BUS SHALL BE PAINTED GREEN.
- ALL LUGS SHALL BE COPPER SCREWS AND CONNECTORS, SPRING HELD.
- ALL WIRING TERMINATIONS SHALL BE RATED NOT LESS THAN 75 DEGREE CENTIGRADE.
- ALL CONTROL WIRING SHALL BE 600V MACHINE TOOL WIRE TYPE MTW.
- ALL POWER WIRING SHALL BE 600V TYPE RHW.
- A LAMINATED COPY OF THE CIRCUIT SCHEMATIC DIAGRAM SHALL BE ATTACHED TO THE INSIDE OF THE CONTROLLER.
- ALL 120 VOLT SYSTEM AND ALL CONTROL WIRING SHALL BE #12 AWG STRANDED UNLESS OTHERWISE INDICATED.
- ALL WIRING SHALL BE NEATLY DRESSED AND SUPPORTED.

ITEM	QTY.	DESCRIPTION
A	1	MAIN CIRCUIT BREAKER, MOLDED CASE, THERMAL MAGNETIC, 2-POLE, 240 V. SINGLE-PHASE, 100 A., BOLT-ON TYPE, TRIP INTERRUPTING RATING OF 22,000 RMS SYMMETICAL AMPERES AT 240 V.
B	1	CONTROL CIRCUIT BREAKER, MOLDED CASE, THERMAL MAGNETIC, SINGLE-POLE, 120 V. SINGLE-PHASE 20 A. BOLT-ON TYPE, TRIP INTERRUPTING RATING OF 14,000 RMS SYMMETICAL AMPERES AT 120 V.
C	1	LIGHTING CONTACTOR MECHANICALLY HELD, CUTLER HAMMER A20K3BMM 100 A. 2-POLE, 600 V. WITH 120 COIL
D	1	CONTROL RELAY CUTLER HAMMER D3PR2 RATED 12 A. AT 120 VAC
E	1	DN-OFF-AUTO 3-POSITION SELECTOR SWITCH GE CR104P HEAVY DUTY SWITCH, RATED FOR 10 A. AT 600 VAC.
F	1	GFCI RECEPTACLE, 120 V., 20 A. SPEC. GRADE, NEMA CONFIG. 5-20R
G	1	SPDT MOMENTARY NORMALLY OPEN, NORMALLY CLOSED PUSHBUTTON SWITCH CUTLER HAMMER 84F1063 RATED 15 A. AT 120 V.
H	1	60 WATT LIGHT FIXTURE, VAPDR TIGHT, WITH GLOBE, GUARD AND MOUNTING BOX.
I	4	SECONDARY SURGE ARRESTER SQUARE D SDSA1175, 175 VAC PHASE-TO-GROUND MAXIMUM
J	3	BRANCH LIGHTING CIRCUIT BREAKER, MOLDED CASE, THERMAL MAGNETIC, 2-POLE, 240 V. SINGLE-PHASE, 30 A. TRIP INTERRUPTING RATING 10,000 RMS SYMMETICAL AMPERES AT 240 V.
K	2	BRANCH RECEPTACLE CIRCUIT BREAKER, MOLDED CASE, THERMAL MAGNETIC, SINGLE POLE 120 V. SINGLE-PHASE, 40 A. TRIP INTERRUPTING RATING 10,000 RMC SYMMETRICAL AMPERES AT 120 V
L	1	TERMINAL BLOCK RATED 600 V., 85 A.
M	1	COPPER NEUTRAL BUS
N	1	COPPER GROUND BUS
O	1	COM-ED SERVICE METER



\*LICENSE EXPIRES 11-30-05\*

C:\land Projects 2004\shw\010685\dwg\10685-LIGHT-DETAILS.DWG  
 Plotted: 12-28-04 @ 2:07pm By: 231ukb  
 Copyright © 2004, by Baxter & Woodman, Inc.  
 State of Illinois Professional Engineer Firm  
 License No. 184-001211 - Expires 11-30-05

CONSULTANTS	REV. NO.	DATE	DESCRIPTION
	1	12-21-04	PER I.D.O.T. REVIEW

**BAXTER & WOODMAN**  
 Consulting Engineers

*Baxter & Woodman*  
 Crystal Lake, Illinois 815.459.1260  
 Burlington, Wisconsin 262.763.7834  
 Mokena, Illinois 708.478.2090  
 DeKalb, Illinois 815.787.3111  
 Grayslake, Illinois 847.223.5088  
 Rockford, Illinois 815.489.1551

**VILLAGE OF SHOREWOOD, ILLINOIS**  
**U.S. ROUTE 52 IMPROVEMENTS**

**LIGHTING DETAILS**

DESIGNED BY	JLR	SCALE	NONE
DRAWN BY	UKB	PROJECT NO.	010685
CHECKED BY	MDK	SHEET NO.	
DATE	10-05-04		