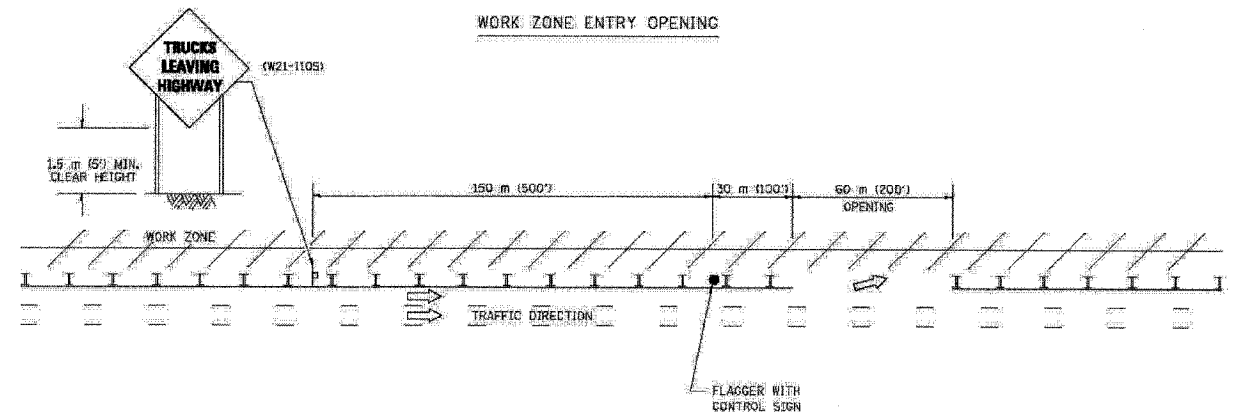
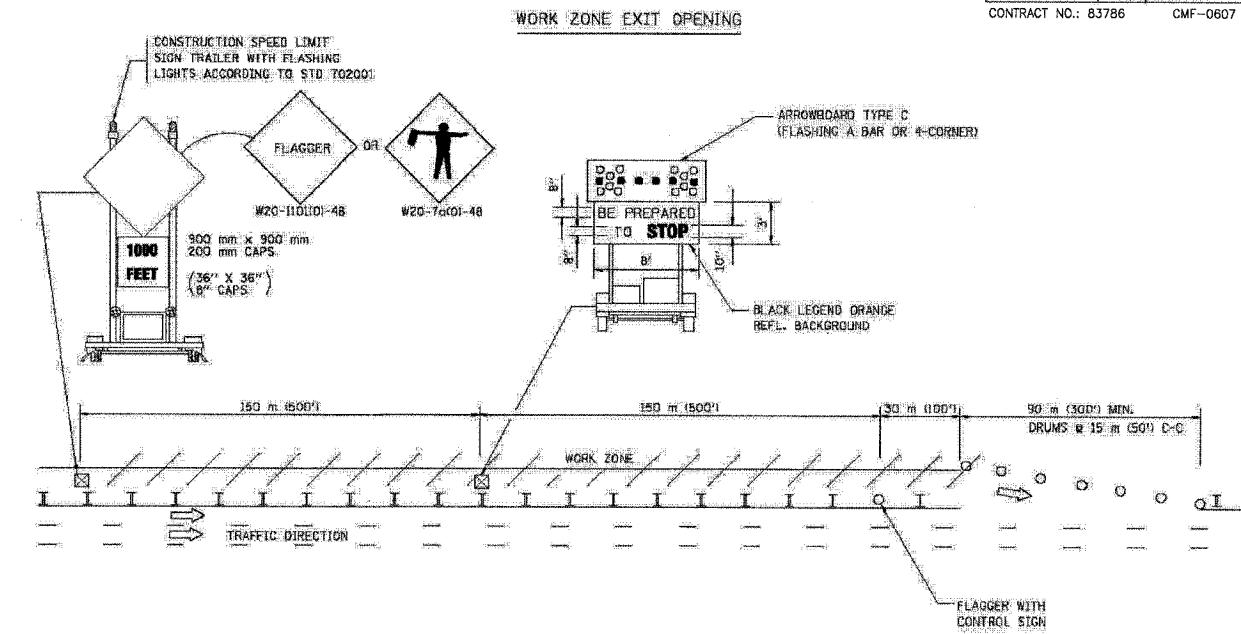


F.A. RTE.	SECTION	COUNTY	TOTAL SHEETS	SHEET NO.
0607	01-0014-00-FP	WILL	85	71
STA.	TO STA.			
FED. ROAD DIST. NO.	ILLINOIS	FED. AID PROJECT		
CONTRACT NO.: 83786	CMF-0607 (070)			

SIGNING FOR FLAGGING OPERATIONS AT WORK ZONE OPENINGS



- NOTES:
1. The Arrowboard, the flagger Ahead trailer mounted sign, and the Trucks Leaving Highway sign shall be removed or turned away from traffic and the exit and entry openings shall be closed when the flagging operation ceases.
 2. Work Zone Exit Openings should be a minimum of one half mile apart.
 3. Exiting the work zone at any place other than at a Work Zone Exit Opening will be prohibited.
 4. All vehicles shall enter the work zone at entry openings, using their turn signals to warn motorists.

ALL DIMENSIONS ARE IN MILLIMETERS (INCHES) UNLESS OTHERWISE SHOWN

ILLINOIS DEPARTMENT OF TRANSPORTATION

SIGNING FOR FLAGGING OPERATIONS AT WORK ZONE OPENINGS.

REVISIONS	
NAME	DATE
DWS	8/98
JAF	4/03

SCALE: NONE
 DATE: 05/06/2003
 DRAWN BY: CADD
 CHECKED BY: TC-16

REVISION DATE: 04/24/03

05/06/2003
 c:\projects\dist1\dist1.dwg
 1/15/03

COPYRIGHT © 2003 BY BAKER & MCKIM, INC.
 STATE OF ILLINOIS - PROFESSIONAL DESIGN FIRM
 LICENSE NO. 04-00121 - EXP. 03/31/2005