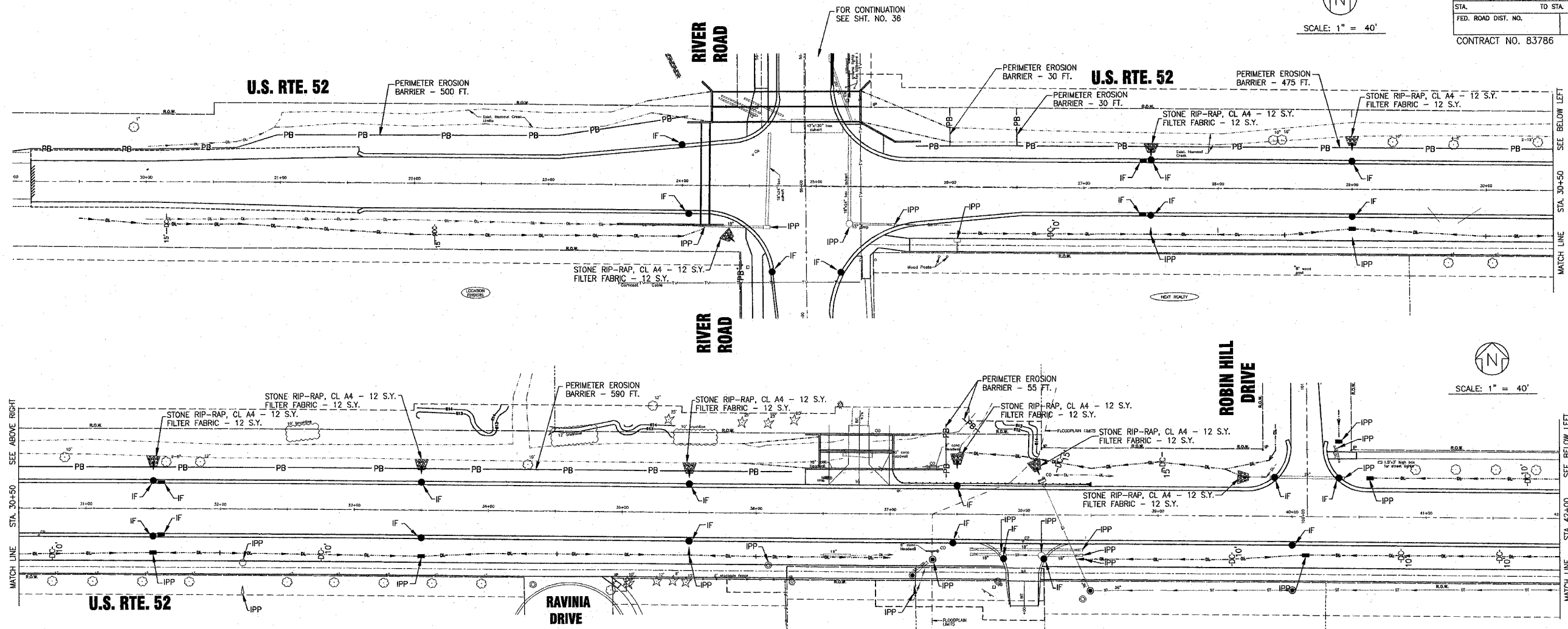


F.A.P. ROUTE NO.	SECTION	COUNTY	TOTAL SHEETS	SHEET NO.
0607	01-00014-00-FP	WILL	85	35
STA. TO STA.	ILLINOIS		FED AID PROJECT	
FED. ROAD DIST. NO.			CMF-0607 (070)	
CONTRACT NO. 83786				

SCALE: 1" = 40'



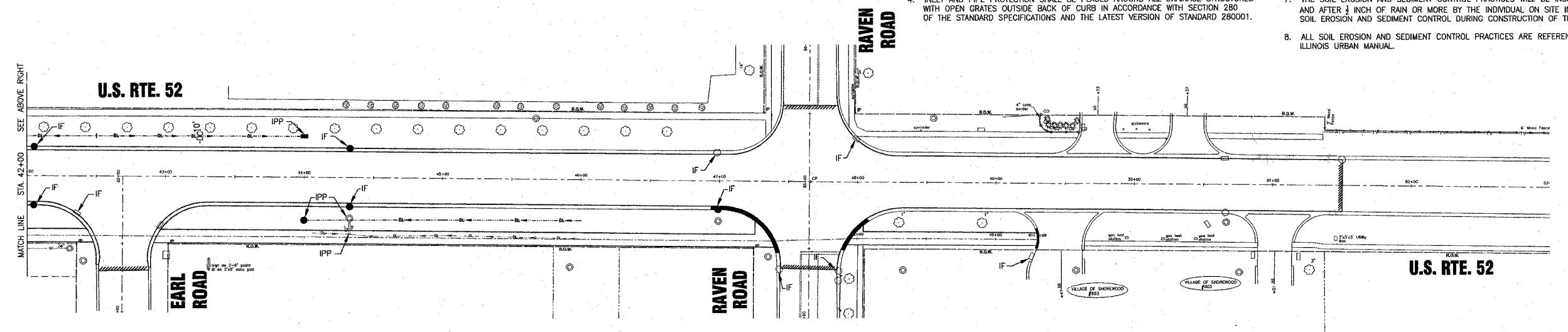
SCHEDULE OF EROSION CONTROL QUANTITIES

PERIMETER EROSION BARRIER	FOOT	2280
TEMPORARY DITCH CHECKS	EACH	12
INLET AND PIPE PROTECTION	EACH	31
STONE RIP-RAP, CLASS A4	SQ. YD.	106
FILTER FABRIC FOR USE WITH RIP-RAP	SQ. YD.	106
INLET FILTERS	EACH	39

LEGEND

DC	TEMPORARY DITCH CHECKS
PB	PERIMETER EROSION BARRIER
IPP	INLET AND PIPE PROTECTION
IF	DRAINAGE STRUCTURE INLET FILTER

- SOIL EROSION AND SEDIMENT CONTROL NOTES
1. SOIL EROSION AND SEDIMENT CONTROL FEATURES SHALL BE CONSTRUCTED PRIOR TO THE COMMENCEMENT OF UPLAND DISTURBANCE.
  2. ALL STORM SEWER FACILITIES THAT ARE OR WILL BE FUNCTIONING DURING CONSTRUCTION SHALL BE PROTECTED, FILTERED, OR OTHERWISE TREATED TO REMOVE SEDIMENT.
  3. ALL TEMPORARY AND PERMANENT EROSION CONTROL MEASURES MUST BE MAINTAINED AND REPAIRED AS NEEDED. THE GENERAL CONTRACTOR WILL BE RESPONSIBLE FOR INSPECTION AND REPAIR DURING CONSTRUCTION.
  4. INLET AND PIPE PROTECTION SHALL BE PLACED AROUND ALL DRAINAGE STRUCTURES WITH OPEN GRATES OUTSIDE BACK OF CURB IN ACCORDANCE WITH SECTION 280 OF THE STANDARD SPECIFICATIONS AND THE LATEST VERSION OF STANDARD 280001.
  5. THE SOIL AND WATER CONSERVATION DISTRICT IS RESPONSIBLE FOR CONDUCTING SITE VISITS AND VERIFYING THAT THE PRACTICES ARE WORKING PROPERLY AND DETERMINE IF ADDITIONAL PRACTICES ARE NEEDED FOR BETTER SOIL EROSION AND SEDIMENT CONTROL. IF ADDITIONAL PRACTICES ARE DEEMED NECESSARY BY THE SWCD THE CONTRACTOR WILL IMPLEMENT THE PRACTICES IN A TIMELY MANNER.
  6. THE WILL/SOUTH COOK SOIL AND WATER CONSERVATION DISTRICT MUST BE NOTIFIED ONE WEEK PRIOR TO THE PRE-CONSTRUCTION CONFERENCE, ONE WEEK PRIOR TO THE COMMENCEMENT OF LAND DISTURBING ACTIVITIES, AND ONE WEEK PRIOR TO FINAL INSPECTION.
  7. THE SOIL EROSION AND SEDIMENT CONTROL PRACTICES WILL BE INSPECTED WEEKLY AND AFTER 1/2 INCH OF RAIN OR MORE BY THE INDIVIDUAL ON SITE IN CHARGE OF SOIL EROSION AND SEDIMENT CONTROL DURING CONSTRUCTION OF THE PROJECT.
  8. ALL SOIL EROSION AND SEDIMENT CONTROL PRACTICES ARE REFERENCED FROM THE ILLINOIS URBAN MANUAL.



SCALE: 1" = 40'

I:\SHRWD\010665\DWGS\10665-FROS.dwg  
 Plotted: 3-31-05 @ 11:13am By: 231ukb  
 Copyright © 2004, By Baxter & Woodman, Inc.  
 State of Illinois - Professional Design Firm  
 License No. - 184-001121 - Expires 4-30-05

CONSULTANTS	REV. NO.	DATE	DESCRIPTION	 <b>Baxter &amp; Woodman</b> Crystal Lake, Illinois 815.459.1260 Burlington, Wisconsin 262.788.7834 Mokena, Illinois 708.478.2090 DeKalb, Illinois 815.787.3111 Graylake, Illinois 847.223.5088 Rockford, Illinois 815.489.1551	<b>VILLAGE OF SHOREWOOD, ILLINOIS</b> <b>U.S. ROUTE 52 IMPROVEMENTS</b>	<b>TEMPORARY EROSION CONTROL PLAN</b> <b>U.S. RTE. 52</b>	DESIGNED BY	SCALE
	1	12-21-04	PER I.D.O.T. REVIEW				LDH	HORIZ: 1"=40'
	2	4-5-05			PROJECT NO.		UKB	010665
					CHECKED BY		LDH	
					DATE		10-05-04	
								<b>35 OF 85</b>

Revised 4-5-05