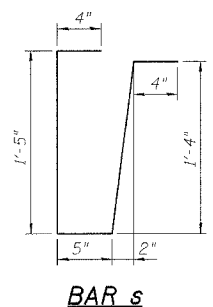
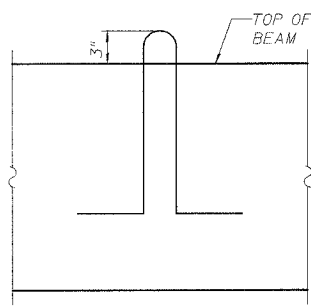
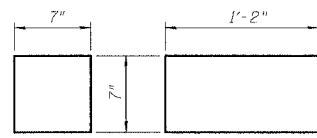
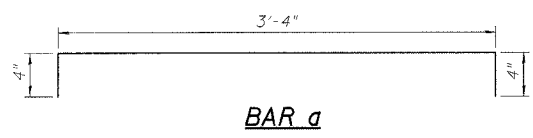
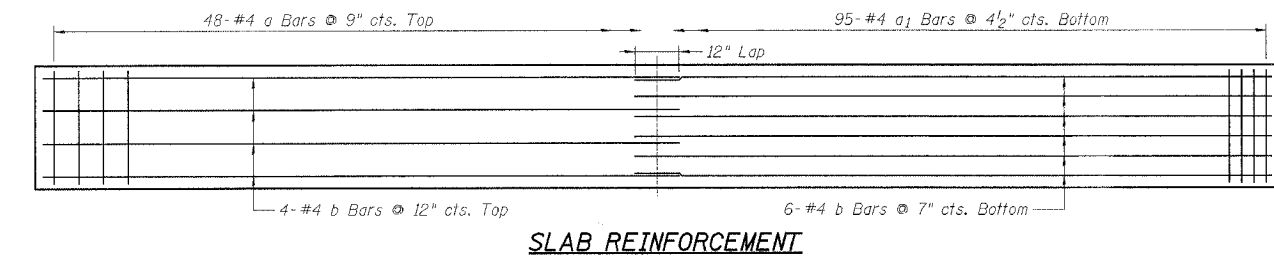
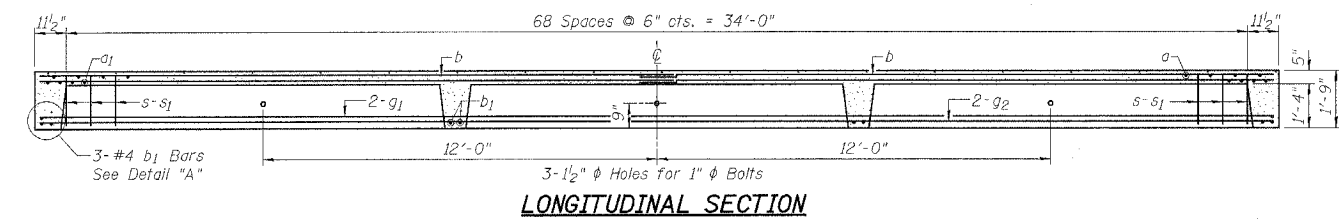
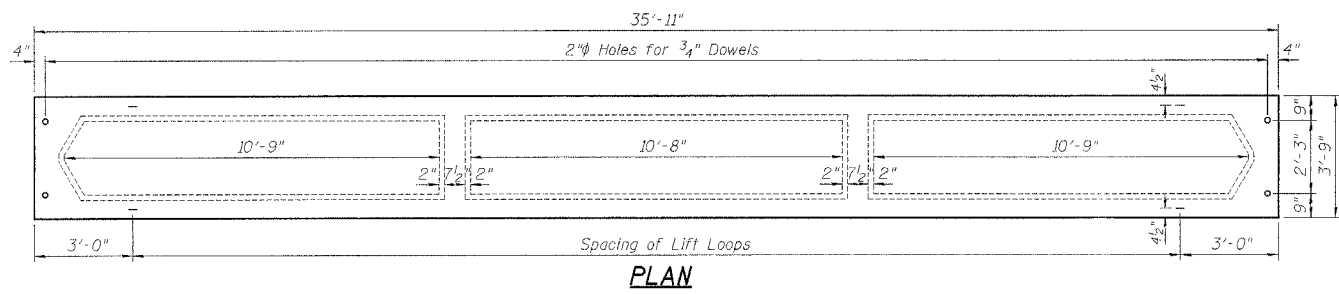
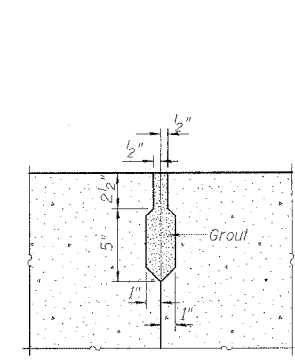


ROUTE NO.	SECTION 03-08111-00-BR	SHEET	6
N.B.S.	COUNTY OGLE	JO	
ILLINOIS PROJECT BRGS-141160			

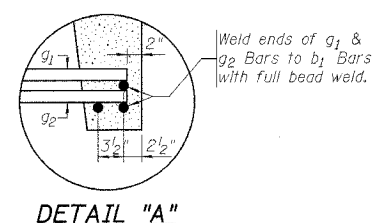
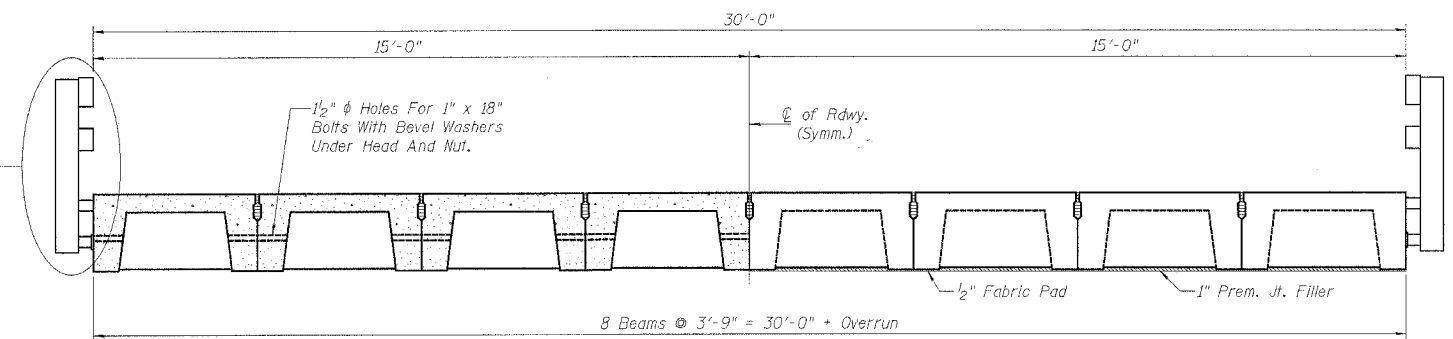
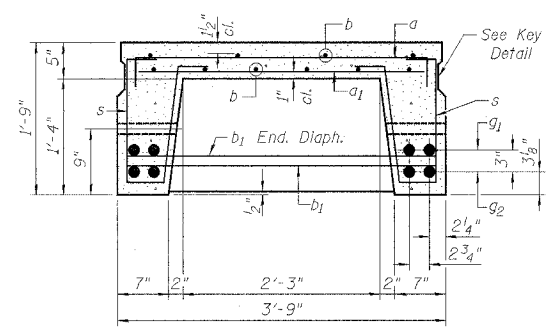


DESIGN STRESSES
 $f'_c = 4,500$ psi.
 $f_c = 1,800$ psi.
 $f_y = 60,000$ psi.
 $n = 8$

LOADING HS20-44



Note:
Omit Key On Exterior Face
Of Outside Beams



PRECAST NOTES

All Transverse Tie Assemblies (Nuts, Bolts, And Washers) Shall Be Hot Dipped Galvanized In Accordance With AASHTO Designation M-232.
 Cost Of Reinforcement Bars And Accessories Cast Into Slab Unit, Of Bearing Pads, Furnishing, Drilling For, Placing And Grouting Anchor Dowels, Of Furnishing And Assembling Of 1" Bolts And Of Grouting Longitudinal Shear Key Is Included In The Unit Bid Price For "Precast Concrete Bridge Slab."
 Tack Welding Of Stirrups To The Bottom Longitudinal Reinforcement Bars Will Not Be Permitted Except As Otherwise Authorized In Writing By The Engineer.
 Reinforcement Bars Shall Conform To The Requirements Of AASHTO M-31, M-42 Or M-53 Grade 60.
 Unless Otherwise Noted by Engineer, Lifting Loops Shall Be 1/2" 6x19 Class Wire Rope With Fiber Core And Shall Have A Minimum Ultimate Tensile Strength Of 18,700 Lbs. Loops Shall Be Burned Off After Slab/Cap Have Been Erected.

MATERIAL LIST - ONE BEAM

Bars	No.	Size	Length	Weight
a	48	#4	4'-0"	128
a ₁	95	#4	3'-3"	206
b	20	#4	18'-4"	245
b ₁	10	#4	3'-6"	23
g ₁	4	#11	35'-7"	756
g ₂	4	#11	35'-7"	756
s	138	#3	3'-10"	199
Class SI Concrete			Cu. Yds.	4.9
Reinforcement Bars			Lbs.	2,314
Total Weight			Lbs.	19,724

BILL OF MATERIAL

Precast Concrete Bridge Slab	Sq. Ft.	1077.5
------------------------------	---------	--------

PRECAST CONCRETE BRIDGE SLAB
ANTERIOR ROAD OVER UNNAMED STREAM
 SECTION 03-08111-00-BR
 OGLE COUNTY
 WHA # 1024D03