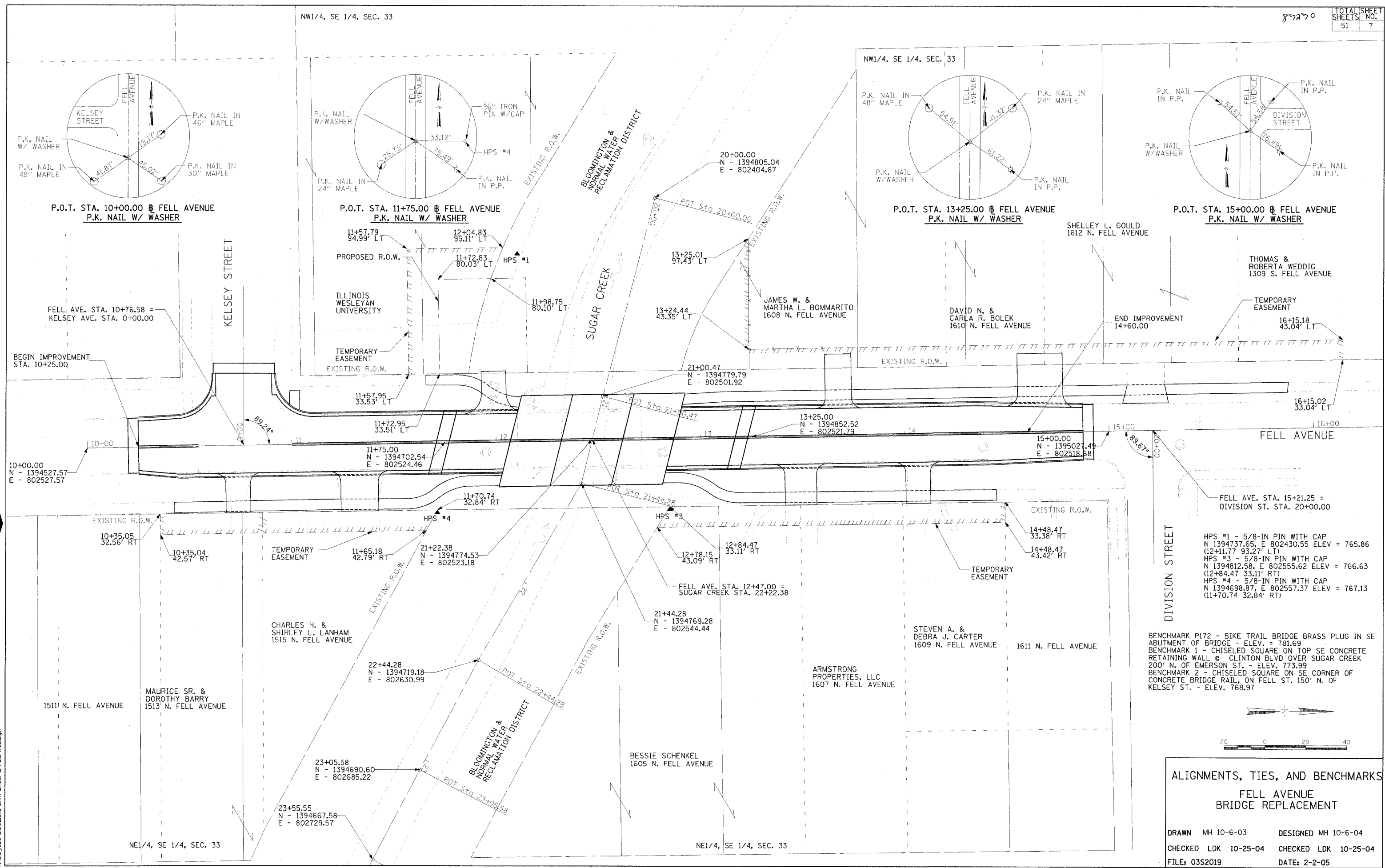


87270

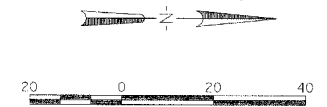


HPS #1 - 5/8-IN PIN WITH CAP
N 1394737.65, E 802430.55 ELEV = 765.86
(12+11.77 93.27' LT)

HPS #3 - 5/8-IN PIN WITH CAP
N 1394812.58, E 802555.62 ELEV = 766.63
(12+84.47 33.11' RT)

HPS #4 - 5/8-IN PIN WITH CAP
N 1394698.87, E 802557.37 ELEV = 767.13
(11+70.74 32.84' RT)

BENCHMARK P172 - BIKE TRAIL BRIDGE BRASS PLUG IN SE ABUTMENT OF BRIDGE - ELEV. = 781.69
BENCHMARK 1 - CHISELED SQUARE ON TOP SE CONCRETE RETAINING WALL @ CLINTON BLVD OVER SUGAR CREEK 200' N. OF EMERSON ST. - ELEV. 773.99
BENCHMARK 2 - CHISELED SQUARE ON SE CORNER OF CONCRETE BRIDGE RAIL, ON FELL ST. 150' N. OF KELSEY ST. - ELEV. 768.97



ALIGNMENTS, TIES, AND BENCHMARKS
FELL AVENUE
BRIDGE REPLACEMENT

DRAWN MH 10-6-03 DESIGNED MH 10-6-04
CHECKED LDK 10-25-04 CHECKED LDK 10-25-04
FILE: 03S2019 DATE: 2-2-05

02/03/2005 I:\03\jobs\03s2019\civil\sheet\c705-f1es.dgn