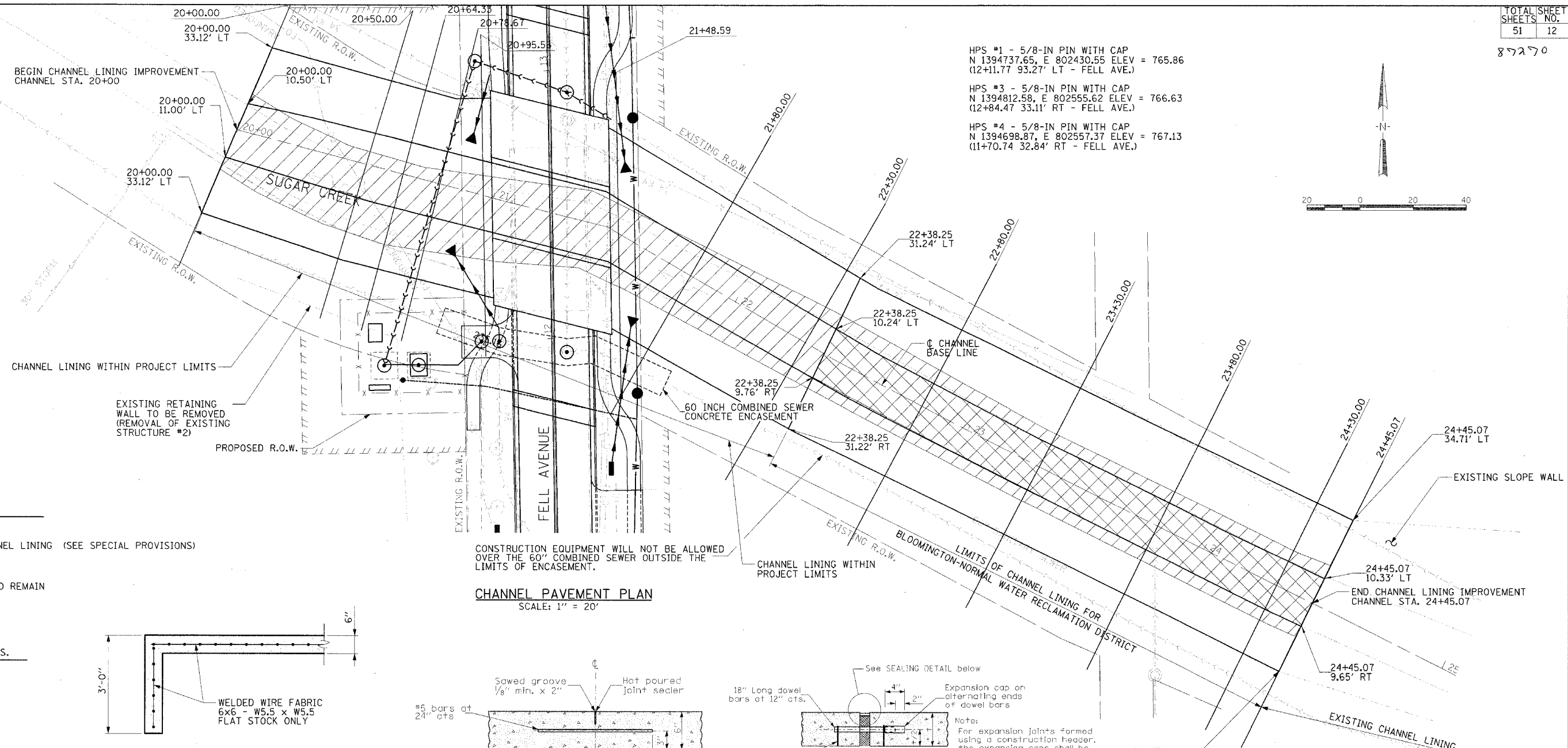




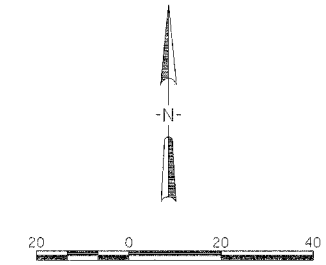
02/03/2005 14:03:03 job:03s2019 sheet:103-attach.dgn



HPS #1 - 5/8-IN PIN WITH CAP  
N 1394737.65, E 802430.55 ELEV = 765.86  
(12+11.77 93.27' LT - FELL AVE.)

HPS #3 - 5/8-IN PIN WITH CAP  
N 1394812.58, E 802555.62 ELEV = 766.63  
(12+84.47 33.11' RT - FELL AVE.)

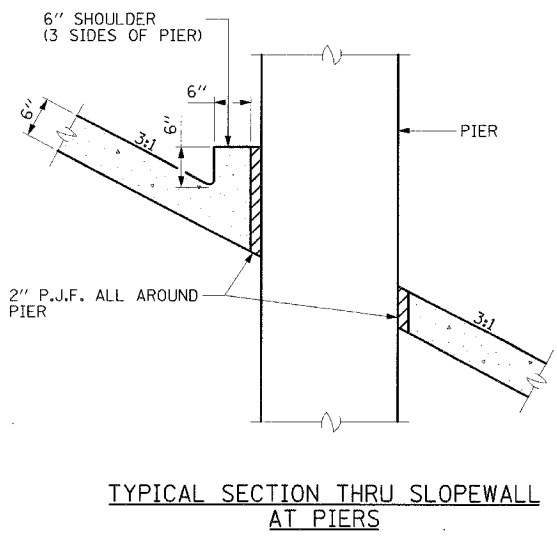
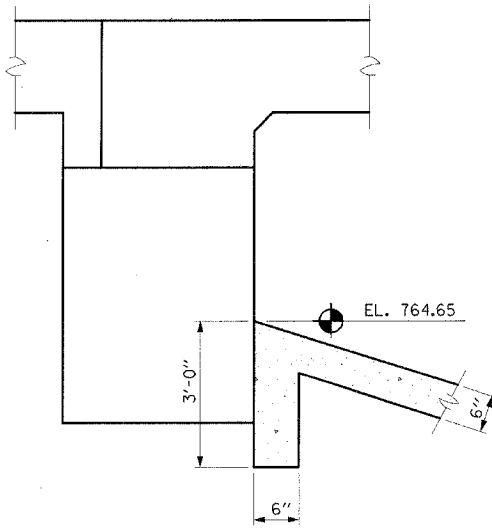
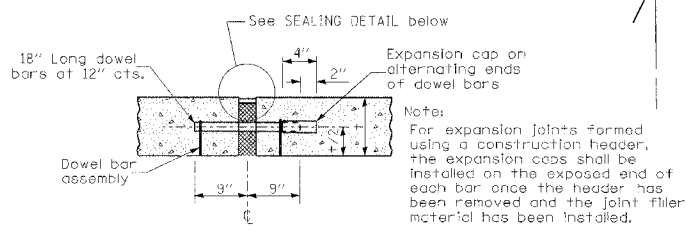
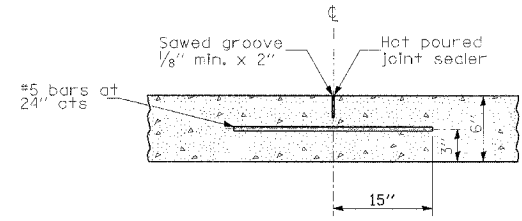
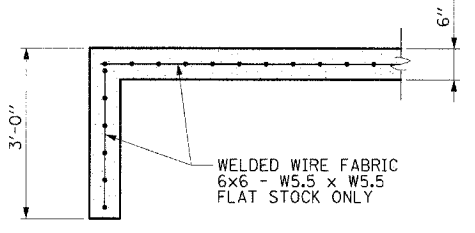
HPS #4 - 5/8-IN PIN WITH CAP  
N 1394698.87, E 802557.37 ELEV = 767.13  
(11+70.74 32.84' RT - FELL AVE.)



**LEGEND**

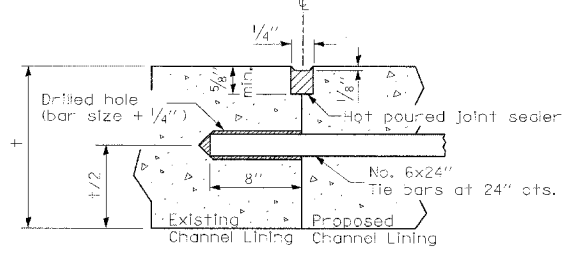
- REMOVAL OF EXISTING CHANNEL LINING (SEE SPECIAL PROVISIONS) (1012 SQ. YDS.)
- EXISTING CHANNEL LINING TO REMAIN

**SLOPEWALL SPECIAL - 3250 SQ. YDS.**  
(SEE SPECIAL PROVISIONS)



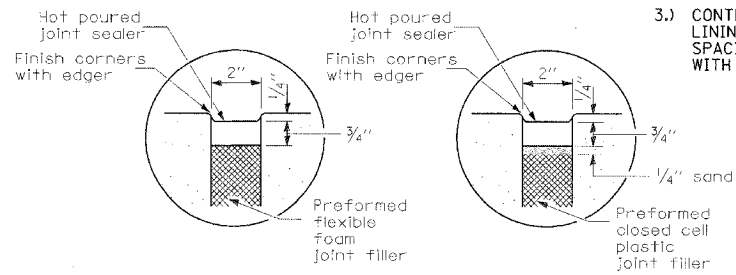
**CONTRACTION JOINT DETAIL FOR CHANNEL LINING**

**TRANSVERSE EXPANSION JOINT DETAIL FOR CHANNEL LINING**



**\*CONSTRUCTION JOINT BETWEEN PROPOSED AND EXISTING CHANNEL LINING**  
(TIE BAR GROUTED IN PLACE)

\*NO. 6 BARS SHALL BE EPOXY GROUTED PER SECTION 584 OF THE STANDARD SPECIFICATIONS. THE COST OF THE CONSTRUCTION JOINT IS INCLUDED WITH SLOPEWALL SPECIAL.



**CHANNEL LINING PLAN  
FELL AVENUE  
BRIDGE REPLACEMENT**

DRAWN RSJ 10-22-04 DESIGNED MH 10-5-04  
CHECKED LDK 10-25-04 CHECKED LDK 10-25-04  
FILE: 03S2019 DATE: 2-2-05