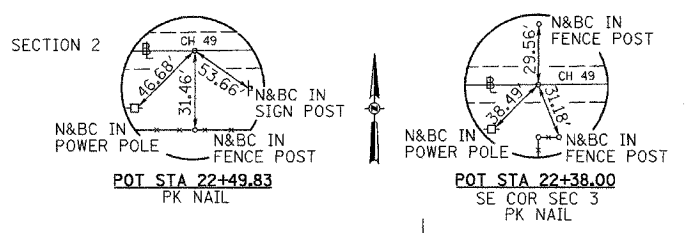
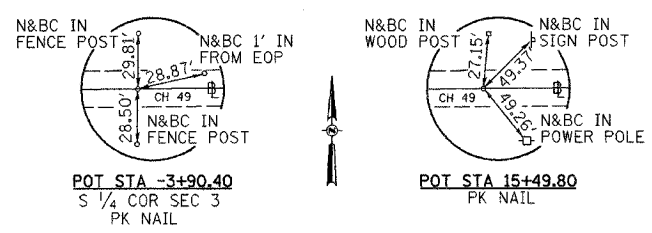


T 31 N, R 7 E, 3rd PM

RTE.	SECTION	COUNTY	TOTAL SHEETS	SHEET NO.
*	03-00127-00-BR	GRUNDY	17	6
STA. 13+00 TO STA. 27+00				
FED. ROAD DIST. NO. 7 ILLINOIS PROJ. NO. BR5-292(01)				
* FAS 292 (CH 49) CONTRACT #87282				

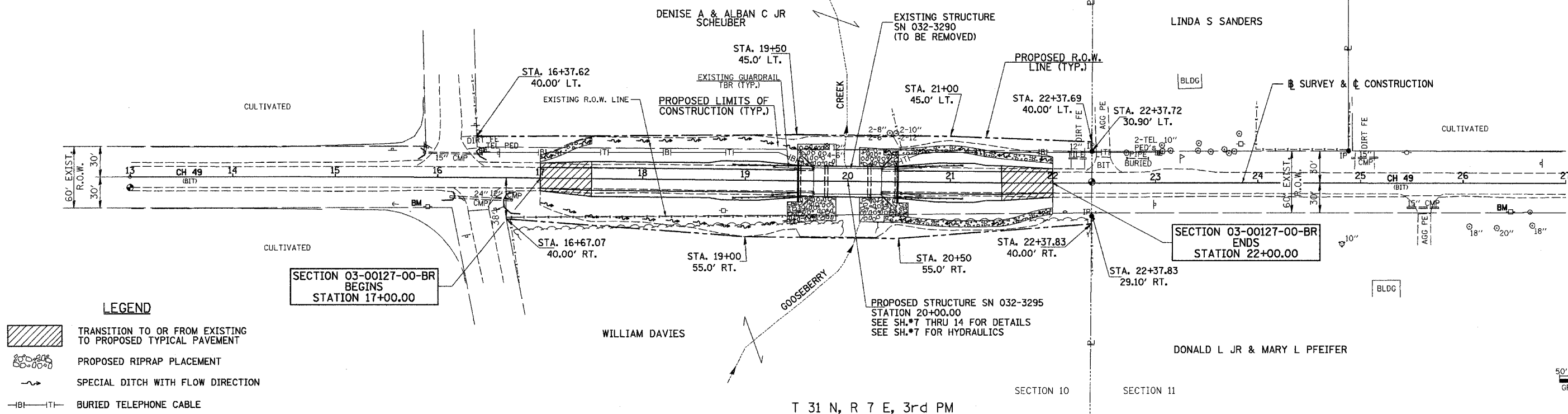


POT STA -3+90.40  
S 1/4 COR SEC 3  
PK NAIL

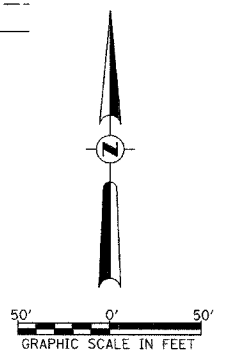
POT STA 15+49.80  
PK NAIL

POT STA 22+49.83  
PK NAIL

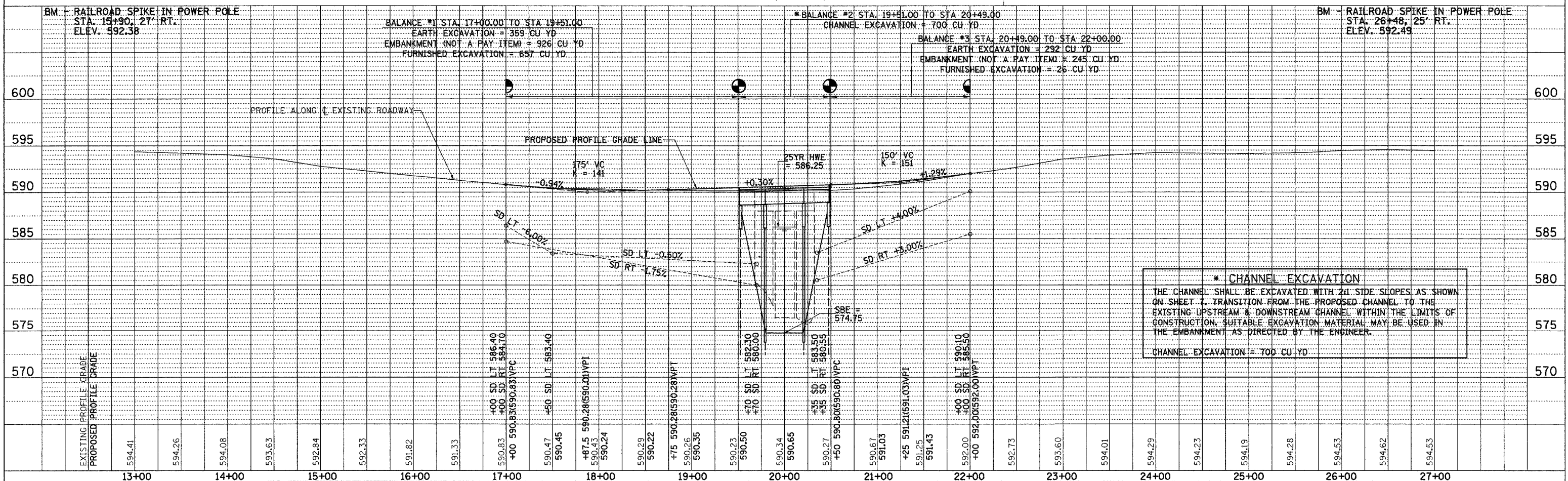
POT STA 22+38.00  
SE COR SEC 3  
PK NAIL



- LEGEND**
- TRANSITION TO OR FROM EXISTING TO PROPOSED TYPICAL PAVEMENT
  - PROPOSED RIPRAP PLACEMENT
  - SPECIAL DITCH WITH FLOW DIRECTION
  - BURIED TELEPHONE CABLE



T 31 N, R 7 E, 3rd PM



EXISTING PROFILE GRADE	594.41	594.26	594.08	593.63	592.84	592.33	591.82	591.33	590.83	590.47	590.45	590.29	590.22	590.23	590.50	590.34	590.65	590.27	590.67	591.03	591.25	591.43	592.00	592.73	593.60	594.01	594.29	594.23	594.19	594.28	594.53	594.62	594.53	
PROPOSED PROFILE GRADE																																		
	13+00	14+00	15+00	16+00	17+00	18+00	19+00	20+00	21+00	22+00	23+00	24+00	25+00	26+00	27+00																			