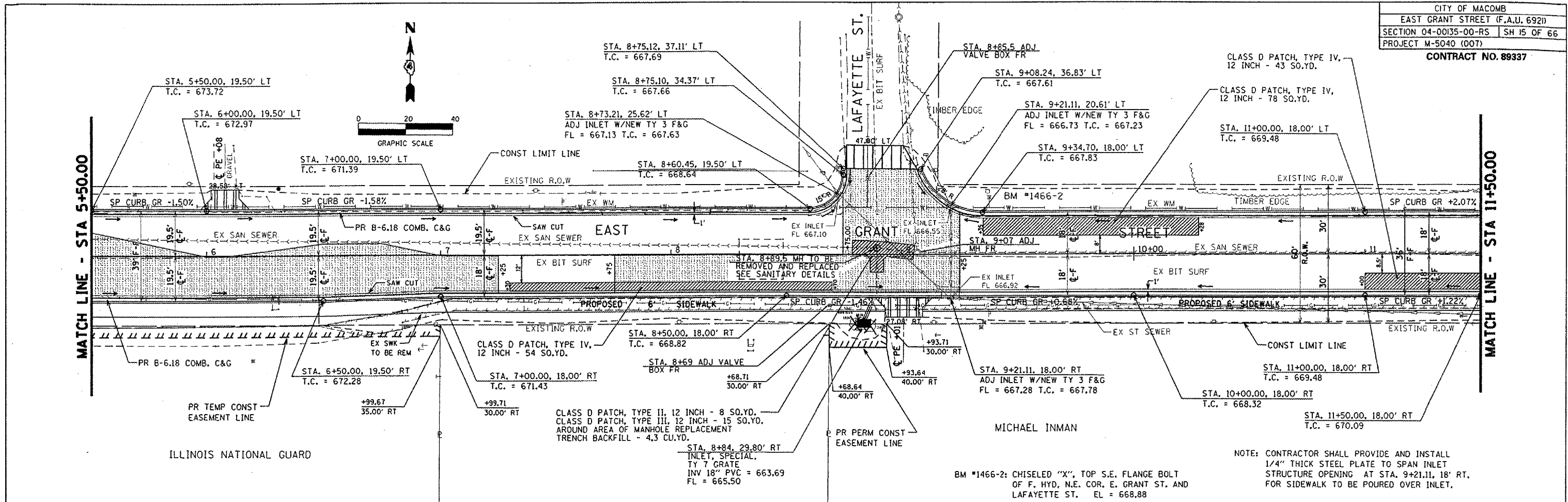
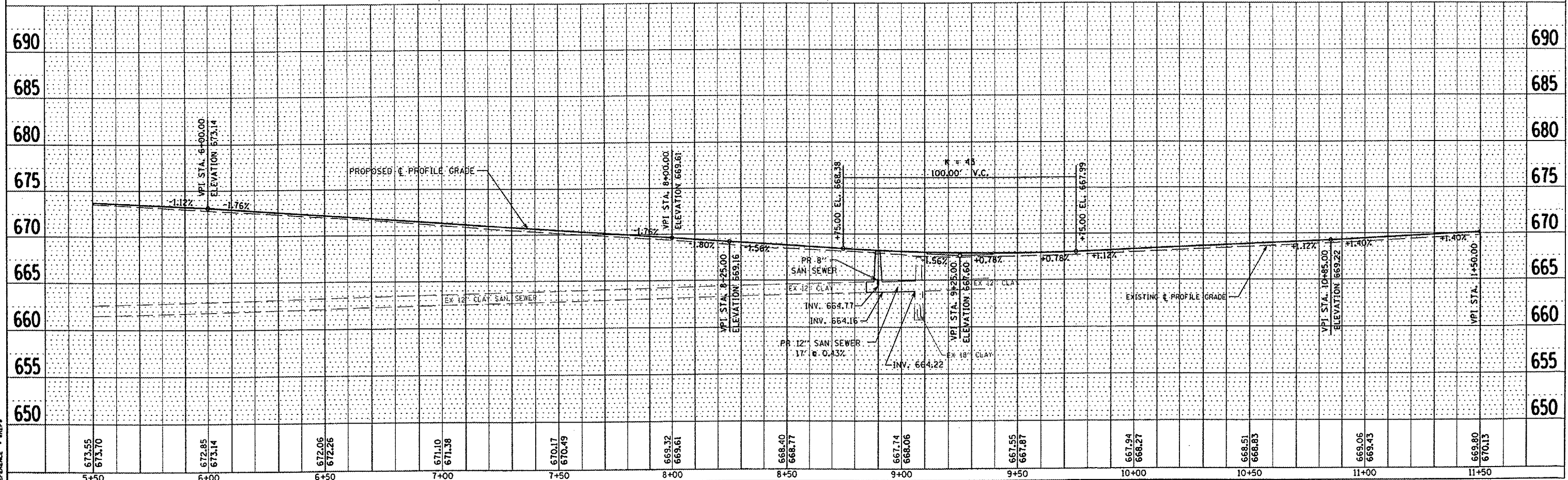


DATE	
BY	
NO.	
NO.	
NO.	
NO.	
NO.	



DATE	
BY	
NO.	
NO.	
NO.	
NO.	
NO.	



PLOT DATE • 2/24/2005
 PLOT SCALE • 1/4" = 1'-0"
 REFERENCE • SHEET 15 OF 66

NOTE: CONTRACTOR SHALL PROVIDE AND INSTALL 1/4" THICK STEEL PLATE TO SPAN INLET STRUCTURE OPENING AT STA. 9+21.11, 18' RT. FOR SIDEWALK TO BE POURED OVER INLET.

BM #1466-2: CHISELED "X", TOP S.E. FLANGE BOLT OF F. HYD. N.E. COR. E. GRANT ST. AND LAFAYETTE ST. EL = 668.88

CLASS D PATCH, TYPE II, 12 INCH - 8 SQ.YD.
 CLASS D PATCH, TYPE III, 12 INCH - 15 SQ.YD.
 AROUND AREA OF MANHOLE REPLACEMENT
 TRENCH BACKFILL - 4.3 CU.YD.

ILLINOIS NATIONAL GUARD

MICHAEL INMAN