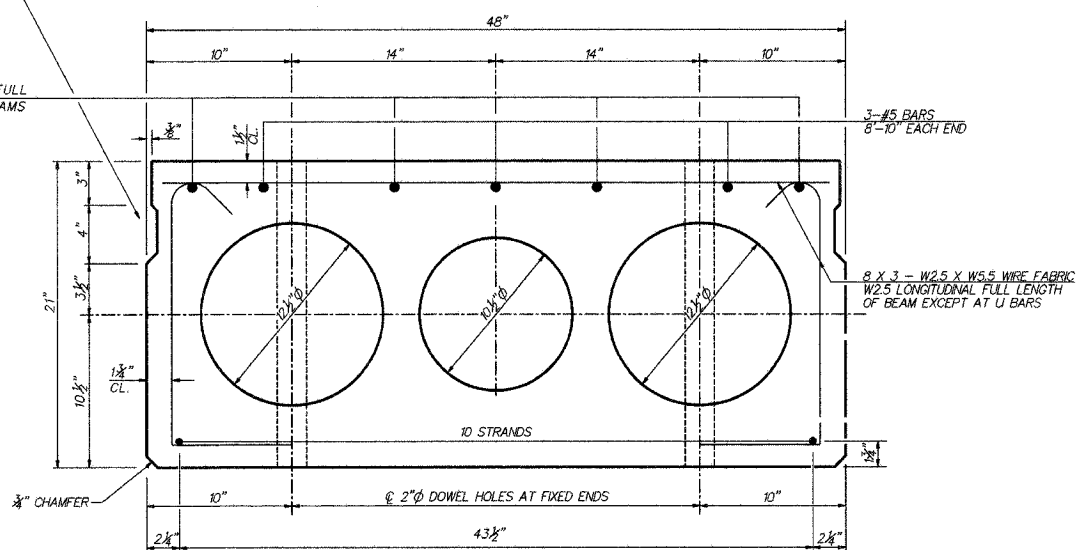


CROSS SECTION

OMIT KEY ON OUTSIDE FACE OF EXTERIOR BEAMS.

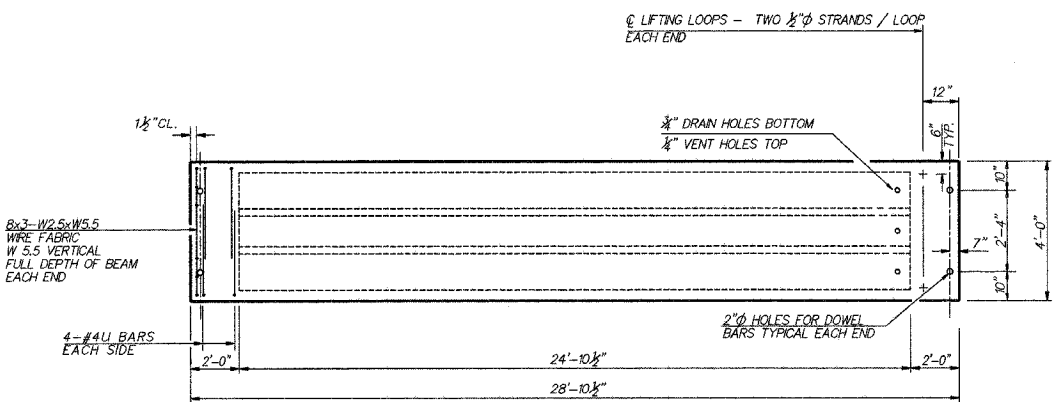
SEE SHEET 5 FOR COMPLETE RAIL DETAILS

4-#5D BARS FULL LENGTH OF BEAMS

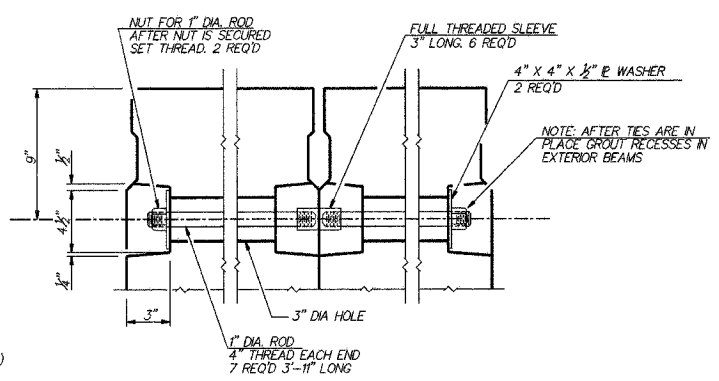


TYPICAL SECTION

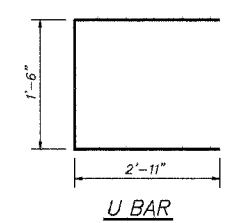
13 - 7 WIRE 1/2" STRANDS STRESSED TO 28,900 POUNDS 1 1/4" UP. USE STANDARD GRID PATTERN



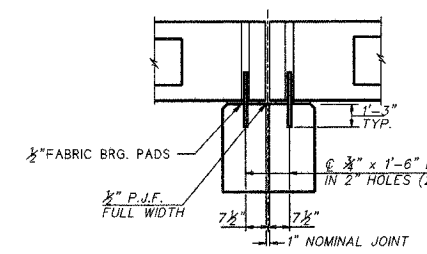
TYPICAL PLAN OF BEAMS



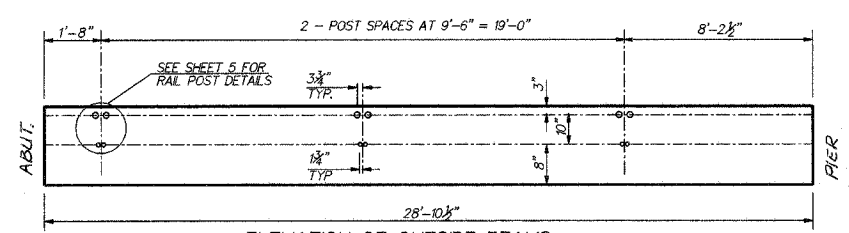
TRANSVERSE TIE BAR DETAIL



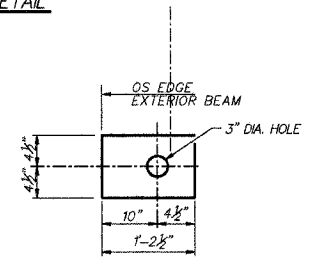
U BAR



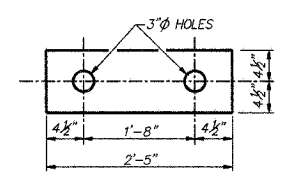
SECTION AT PIERS ALONG Q BEAMS



ELEVATION OF OUTSIDE BEAMS SHOWING RAIL POST SPACING

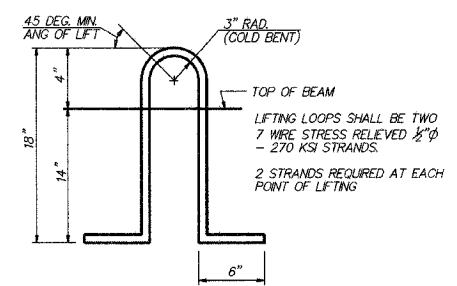


BRG. PAD DETAIL EXTERIOR (8 REOD)

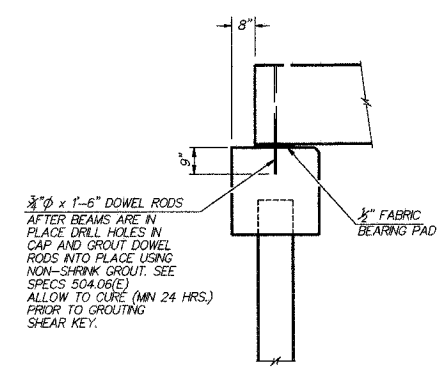


BRG. PAD DETAIL INTERIOR (24 REOD)

PRESTRESSING STEEL SHALL BE NON-GALVANIZED HIGH STRENGTH, STRESS-RELIEVED 7-WIRE STRAND, GRADE 270.
 THE NOMINAL DIAMETER SHALL BE 1/2" AND THE NOMINAL CROSS-SECTIONAL AREA SHALL BE 0.153 SQ. IN.
 LIFTING LOOPS SHALL BE 3/8" DIAMETER, 6x25 CLASS WIRE ROPE WITH FIBER CORE AND SHALL HAVE A MINIMUM ULTIMATE TENSILE STRENGTH OF 33,000 LBS, OR 2-1/2" - 270 KSI STRANDS, AS SHOWN.
 KEYWAY SURFACES SHALL BE CLEANED TO REMOVE FORM OIL OR OTHER BOND BREAKING MATERIAL PRIOR TO SHIPMENT OF THE BEAMS. CLEANING SHALL BE DONE BY SANDBLASTING THE KEYWAY AREAS BETWEEN TOP OF THE BEAM AND THE BOTTOM EDGE OF THE KEY.
 THE 1" DIA RODS IN THE TRANSVERSE TIE ASSEMBLY SHALL BE TIGHTENED TO A SNUG FIT AND THE THREADS SET. POCKETS THAT RECEIVE TRANSVERSE TIE ASSEMBLY SHALL BE FILLED WITH GROUT AFTER TRANSVERSE TIE ASSEMBLY IS IN PLACE.
 REINFORCEMENT BARS SHALL CONFORM TO AASHTO: M-31, M-42 OR M-53, GRADE 60.
 THE BEARING SEAT SURFACES SHALL BE ADJUSTED BY SHIMMING TO ASSURE FIRM AND EVEN BEARING. TWO 1/2" FABRIC ADJUSTING SHIMS OF THE DIMENSIONS OF THE EXTERIOR BEARING PAD SHALL BE PROVIDED FOR EACH BEARING.
 AN EQUAL SUBSTITUTION OF THE LOW-RELAXATION STRANDS FOR THE STRESS-RELIEVED STRANDS WILL BE PERMITTED.
 A CALCIUM NITRIDE CORROSION INHIBITOR, AS COVERED IN THE SPECIAL PROVISIONS SHALL BE USED IN THE CONCRETE FOR PRECAST PRESTRESSED CONCRETE DECK BEAMS.
 THE INITIAL PRESTRESSING FORCE APPLIED TO EACH STRAND SHALL BE THE SAME AS FOR THE STRESS RELIEVED STRANDS (28,900 LBS.)
 RAIL POST ANCHOR DEVICES SHALL BE CAST INTO OUTSIDE BEAM AS ELSEWHERE SPECIFIED
 REQUIRED RELEASE STRENGTH, 1'ci, SHALL BE 4,000 PSI



LIFTING LOOP DETAIL APPROVED ALTERNATE MAY BE SUBSTITUTED FOR ABOVE



SECTION AT ABUTMENT

BILL OF MATERIAL

ITEM	UNIT	QUANTITY
PRECAST PRESTRESSED CONCRETE		
DECK BEAMS (21" DEPTH)	SQ. FT.	1617

SUPERSTRUCTURE DETAILS
 END SPANS
 SECTION 99-13116-00-BR
 STRATTON TOWNSHIP
 EDGAR COUNTY

McCLINTOCK
 CIVIL ENGINEERING SERVICE
 404 SHAW AVE. PARIS, L. 69444
 PHONE (217) 466-010

DRN TLC DATE 4/22/03
 CK SCALE

SHEET 5 OF 11
 JOB NO. 3137-500-00