

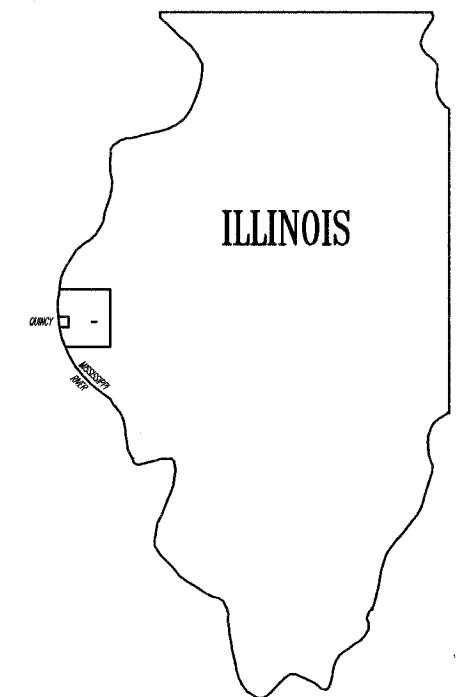
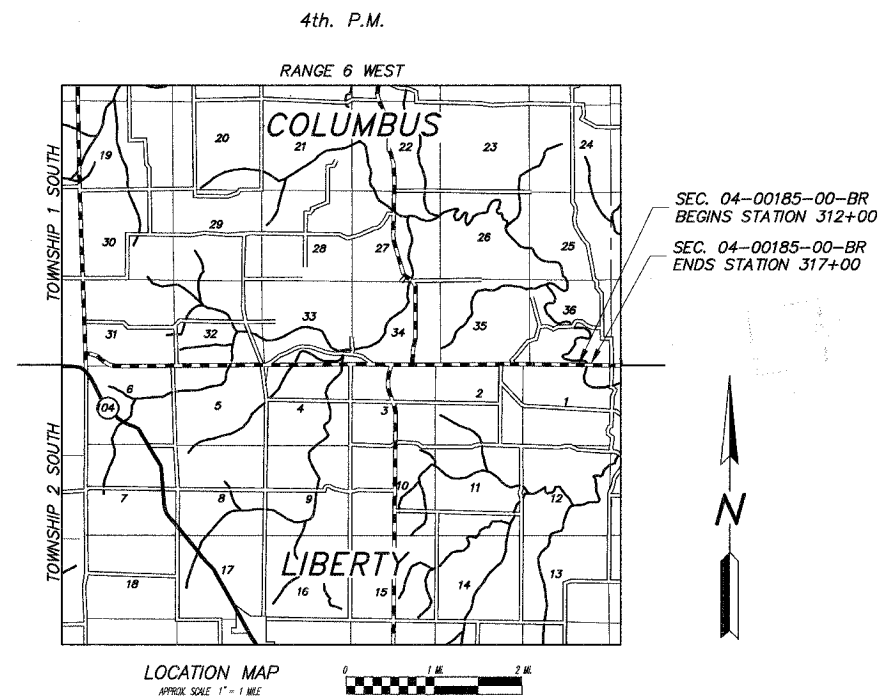
COUNTY	ROUTE	SECTION	TOTAL SHEETS	SHEET NO.
ADAMS	FAS 1588	04-00185-00-BR	20	1

STATE OF ILLINOIS
DEPARTMENT OF TRANSPORTATION
DIVISION OF HIGHWAYS
PLANS FOR PROPOSED
SURFACE TRANSPORTATION / RURAL PROGRAM
FAS ROUTE 1588 (CH #48) SECTION 04-00185-00-BR ADAMS COUNTY
PROJECT NQACRS-1588(106)
EXISTING STRUCTURE NO. 001-3026

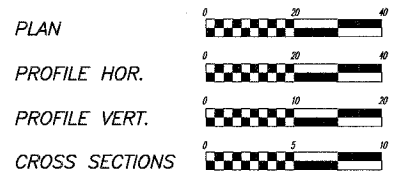
INDEX OF SHEETS:

SHEET NO.	SHEET
1	TITLE SHEET
2	SUMMARY OF QUANTITIES GENERAL NOTES SIGNING FOR ROAD CLOSURE TYPICAL CROSS SECTIONS
3	PLAN & PROFILE
4-7	ROADWAY CROSS SECTIONS
8	BIT. SURFACE REMOVAL AND RESURFACING DETAILS END OF BRIDGE APPROACH PAVEMENT DETAIL
<u>BRIDGE SHEETS</u>	
9	BRIDGE GENERAL PLAN AND ELEVATION
10-11	TOP OF SLAB ELEVATIONS
12-13	SUPERSTRUCTURE
14	STEEL BRIDGE RAIL (SPECIAL)
15	STRUCTURAL STEEL DETAILS
16	MOMENT AND REACTION TABLES JACK AND REMOVE EXISTING BEARINGS
17	TYPE I ELASTOMERIC BEARING
18	TYPE II ELASTOMERIC BEARING
19	ANCHOR BOLT DETAILS FOR BEARINGS
20	BRIDGE APPROACH PAVEMENT (SPECIAL)
<u>HIGHWAY STANDARDS</u>	
STANDARD 515001-02 NAME PLATE	
STANDARD 630001-05 STEEL PLATE BEAM GUARDRAIL	
STANDARD 631026-02 TRAFFIC TERMINAL BARRIER, TYPE 5 & 5A	
STANDARD 701001-01 TRAFFIC CONTROL	
STANDARD 701006-02 TRAFFIC CONTROL	
STANDARD 701011-01 TRAFFIC CONTROL	
STANDARD 702001-05 TRAFFIC CONTROL DEVICES	
STANDARD BLR 21-6 TRAFFIC CONTROL	
STANDARD BLR 23-1 TRAFFIC TERMINAL BARRIER, TYPE 1	

SECTION 04-00185-00-BR CONSISTS OF:
THE REMOVAL OF THE EXISTING REINF. CONCRETE DECK; THE REPAIR AND MODIFICATION OF THE EXISTING SUBSTRUCTURE AND BEARINGS; THE REPLACEMENT OF THE REINFORCED CONCRETE DECK WITH ASSOCIATED TRAFFIC BARRIER TERMINALS AND GUARD RAIL; AND THE NECESSARY ROADWAY ADJUSTMENTS.
EXISTING STRUCTURE NO. 001-3026 IS A REINFORCED CONCRETE DECK ON STEEL BEAMS WITH SOLID CONC. PIERS AND ABUTMENT CAPS.



PROPOSED IMPROVEMENT MARKED THUS —



FULL SIZE PLANS HAVE BEEN PREPARED USING STANDARD ENGINEERING SCALES. REDUCED SIZED PLANS WILL NOT CONFORM TO STANDARD SCALES, IN MAKING MEASUREMENTS ON REDUCED PLANS, THE ABOVE SCALES MAY BE USED.

UTILITIES:
J.U.L.I.E. 1-800-892-0123
ABS WATER DISTRICT CAMP POINT, IL.
ADAMS ELECTRICAL CO-OP.....CAMP POINT, IL.

COLLECTOR - ADT 900
NET LENGTH OF IMPROVEMENT = 500.00 FT. = 0.095 MI.
STRUCTURE NO. 001-3026 LENGTH = 191.50' (BK.-BK. ABUTMENT)

SUBMITTED BY *James R. Frankenhoff* DATE *4/17/04*
JAMES R. FRANKENHOFF, P.E.
LIC. NO. 062-044792
LIC. EXPIRES 11/30/05

APPROVED	<i>April 19, 2004</i> <i>Robert G. Flanagan</i> COUNTY ENGINEER
PASSED	<i>May 21, 2004</i> <i>William E. Martens</i> DISTRICT ENGINEER - CONSTRUCTION
PASSED	<i>MAY 18, 2004</i> <i>William E. Martens</i> DISTRICT ENGINEER OF LOCAL ROADS AND SHEETS - TRF
APPROVED	<i>May 24, 2004</i> <i>Christ H. Reed</i> DISTRICT ENGINEER

STATE OF ILLINOIS
DEPARTMENT OF TRANSPORTATION