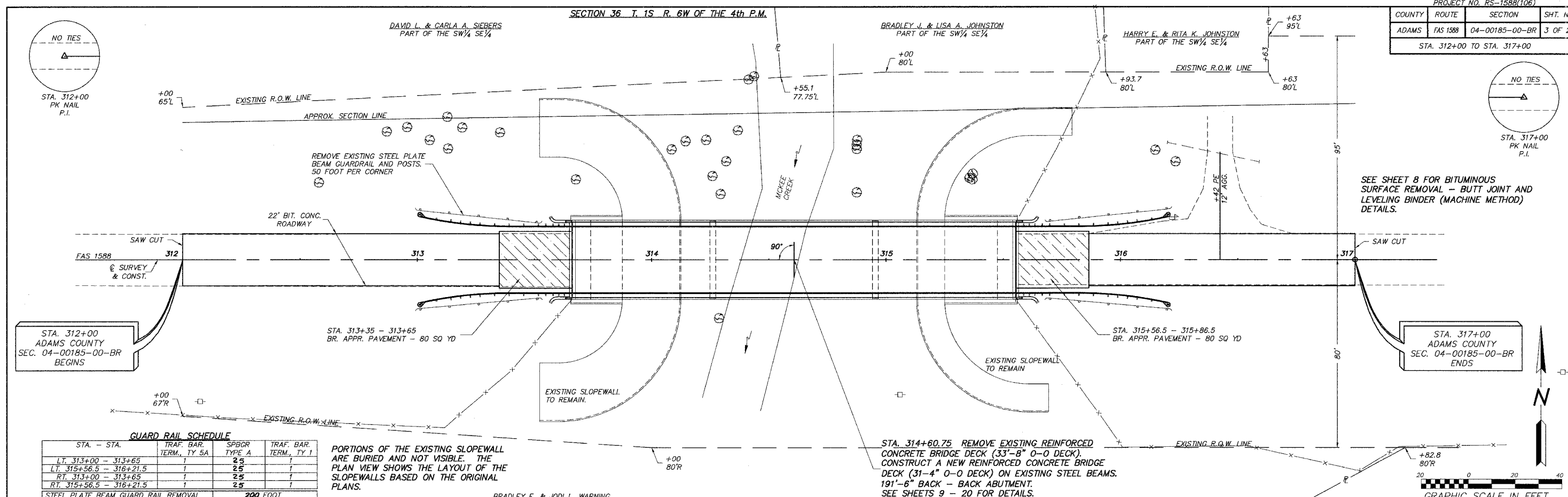


COUNTY	ROUTE	SECTION	SHT. NO.
ADAMS	FAS 1588	04-00185-00-BR	3 OF 20

STA. 312+00 TO STA. 317+00



GUARD RAIL SCHEDULE

STA. - STA.	TRAF. BAR. TERM. TY SA	SPBGR TYPE A	TRAF. BAR. TERM. TY 1
LT. 313+00 - 313+65	1	25	1
LT. 315+56.5 - 316+21.5	1	25	1
RT. 313+00 - 313+65	1	25	1
RT. 315+56.5 - 316+21.5	1	25	1

STEEL PLATE BEAM GUARD RAIL REMOVAL 200 FOOT

PORTIONS OF THE EXISTING SLOPEWALL ARE BURIED AND NOT VISIBLE. THE PLAN VIEW SHOWS THE LAYOUT OF THE SLOPEWALLS BASED ON THE ORIGINAL PLANS.

STA. 314+60.75 REMOVE EXISTING REINFORCED CONCRETE BRIDGE DECK (33'-8" O-O DECK). CONSTRUCT A NEW REINFORCED CONCRETE BRIDGE DECK (31'-4" O-O DECK) ON EXISTING STEEL BEAMS. 191'-6" BACK - BACK ABUTMENT. SEE SHEETS 9 - 20 FOR DETAILS.

