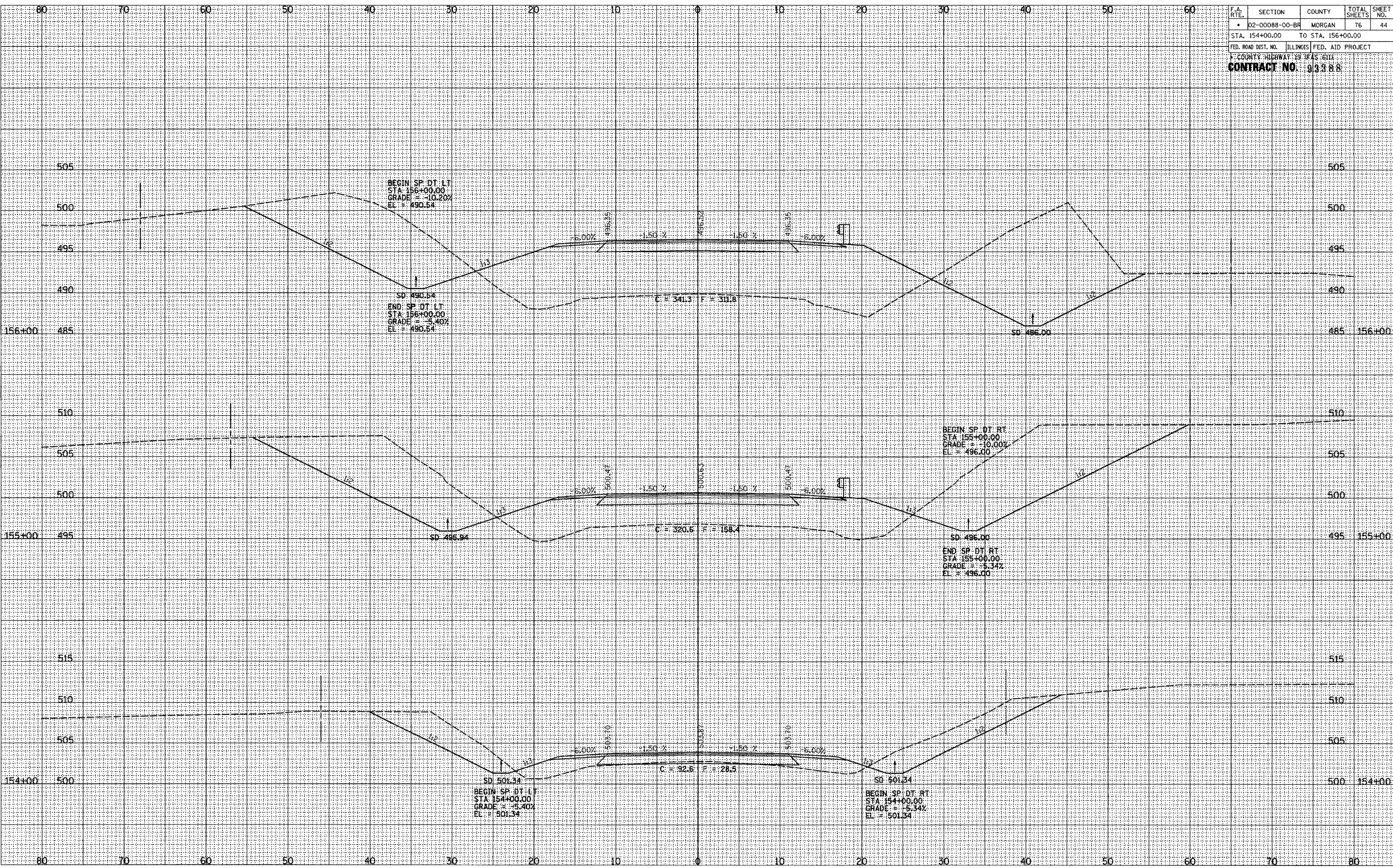


F.A. RTE.	SECTION	COUNTY	TOTAL SHEETS	SHEET NO.
02-00088-00-BR		MORGAN	76	44
STA. 154+00.00 TO STA. 156+00.00				
FED. ROAD DIST. NO. ILLINOIS FED. AID PROJECT				
COUNTY HIGHWAY 19 CHAS. 611E				
CONTRACT NO. 93388				



ROADWAY CROSS SECTIONS LITERBERRY-PRENTICE ROAD (CH 19)

SURVEYED
DATE
SCALE
NOTE BOOK
NO.

SURVEYED
DATE
SCALE
NOTE BOOK
NO.

SURVEYED
DATE
SCALE
NOTE BOOK
NO.