

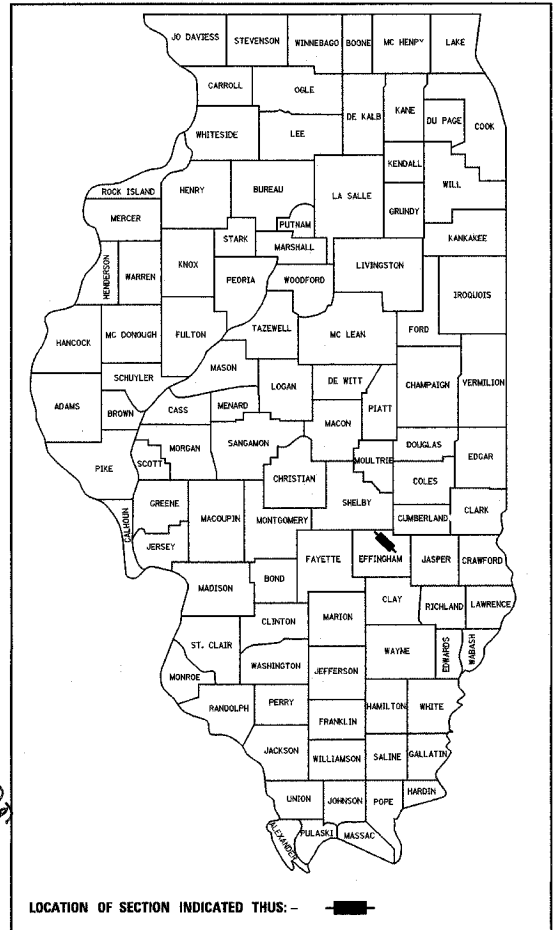
STATE OF ILLINOIS
DEPARTMENT OF TRANSPORTATION
DIVISION OF HIGHWAYS

PLANS FOR PROPOSED FEDERAL HIGHWAY PROJECT

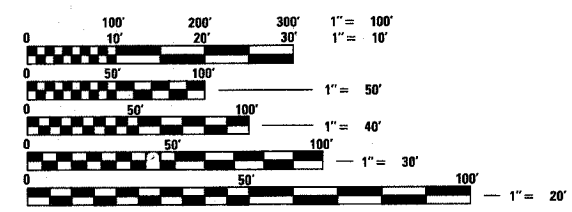
FOR INDEX OF SHEETS, SEE SHEET NO. 2
FOR SUMMARY OF QUANTITIES, SEE SHEET NO'S 4-9

F.A.P. RTE.	SECTION	COUNTY	TOTAL SHEETS	SHEET NO.
774	*	EFFINGHAM	273	1
FED. ROAD DIST. NO. 7 ILLINOIS FED. AID PROJECT				
*107WRS-1, 107BY, 107BY-1 & 107B-2				
CONTRACT NO. 94827				

D-97-012-01

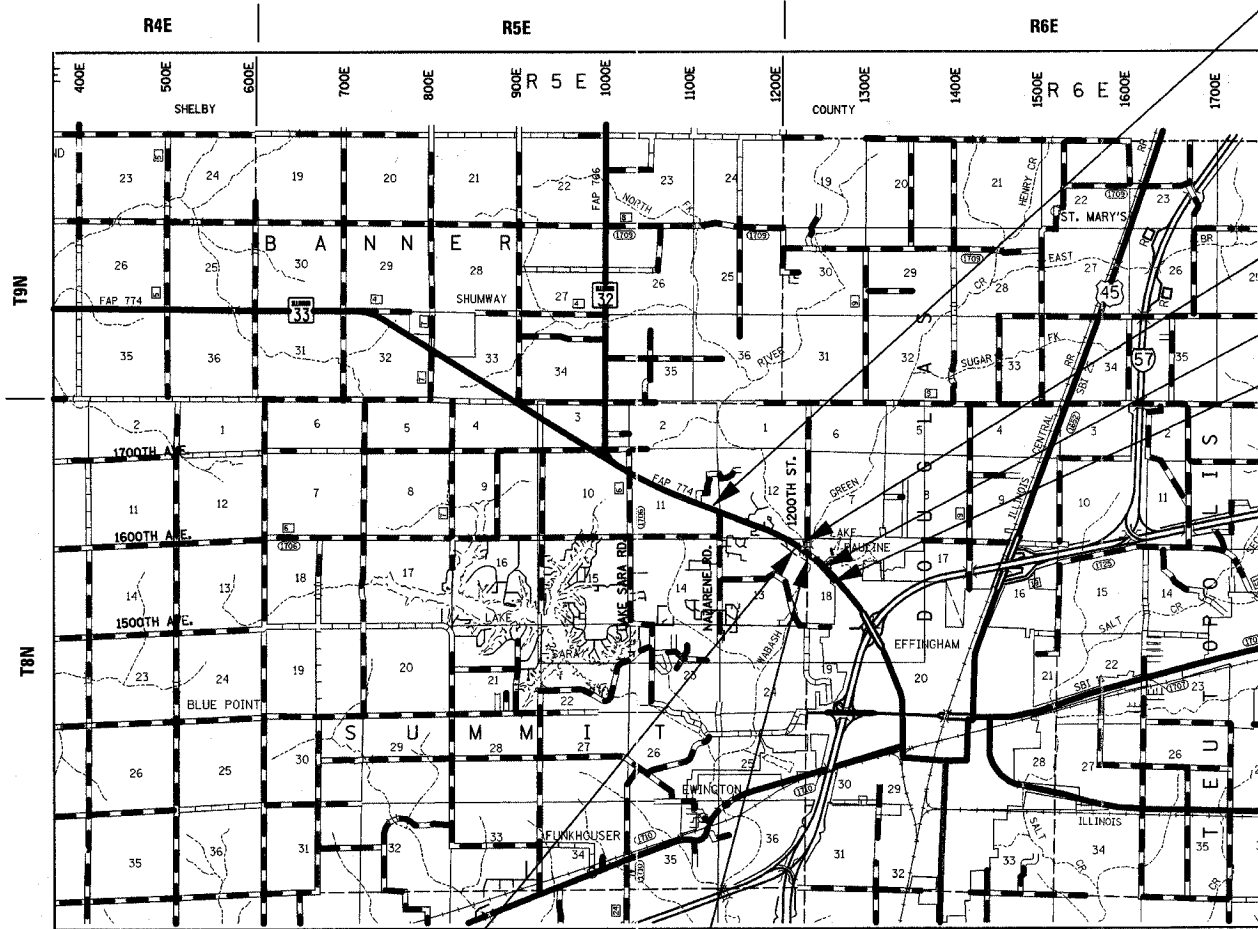


F.A.P. ROUTE 774 (ILLINOIS ROUTE 32/33)
SECTION 107WRS-1, 107BY, 107BY-1 & 107B-2
PROJECT: ACF-0774-(023)
EFFINGHAM COUNTY
C- 97-099-01



FULL SIZE PLANS HAVE BEEN PREPARED USING STANDARD ENGINEERING SCALES, REDUCED SIZED PLANS WILL NOT CONFORM TO STANDARD SCALES, IN MAKING MEASUREMENTS ON REDUCED PLANS, THE ABOVE SCALES MAY BE USED.

FOR UNDERGROUND UTILITY LOCATIONS CALL J.U.L.I.E. TOLL FREE 1-800-892-0123 SUMMIT TOWNSHIP DOUGLAS TOWNSHIP



PROPOSED IMPROVEMENT BEGINS STA. 942 + 50.00

STRUCTURE NO. 025-3161 (EX) BRIDGE SECTION 107B-2 BEGINS STA. 203 + 77.58 ENDS STA. 204 + 90.24

STATION EQUATION STA. 1039 + 00.00 (BK) = STA. 39 + 00.00 (AH)

PROPOSED IMPROVEMENT ENDS STA. 46 + 80.05

STRUCTURE NO. 025-0078 BRIDGE SECTION 107BY BEGINS STA. 1010 + 18.59 ENDS STA. 1012 + 82.59

STRUCTURE NO. 025-0077 BRIDGE SECTION 107BY-1 BEGINS STA. 1017 + 74.09 ENDS STA. 1019 + 99.75



GROSS AND NET LENGTH OF PROJECT = 10,430 FT. = 1.98 MILES

PROJECT ENGINEER: BILL STANLEY
SQUAD LEADER:
TELEPHONE: 217-342-8320

DESIGN DESIGNATION: 1803 (24) ARTERIAL 3.87 (FD 20)
ADT = 13300 (2001)

CONTRACT NO. 94827
SUMMIT TOWNSHIP
DOUGLAS TOWNSHIP

SHEILA J. KIMLINGER
062-049175
REGISTERED
PROFESSIONAL
ENGINEER
STATE OF ILLINOIS

Sheila Kimlinger
SHEILA J. KIMLINGER, P.E.
DATE: March 2, 2005
EXPIRES: 11/30/2008

STATE OF ILLINOIS
DEPARTMENT OF TRANSPORTATION
DIVISION OF HIGHWAYS

SUBMITTED MARCH 9 2005
Christine M. Reed
DEPUTY DIRECTOR OF HIGHWAYS, REGION ENGINEER

20

ENGINEER OF PROJECT DEVELOPMENT AND IMPLEMENTATION
March 25, 2005
Mike Hine
ENGINEER OF DESIGN AND ENVIRONMENT

March 25, 2005
Victor Maden
DIRECTOR, DIVISION OF HIGHWAYS

FHWA _____ 23 _____
DIVISION ADMINISTRATOR

PRINTED BY AUTHORITY
OF THE STATE OF ILLINOIS