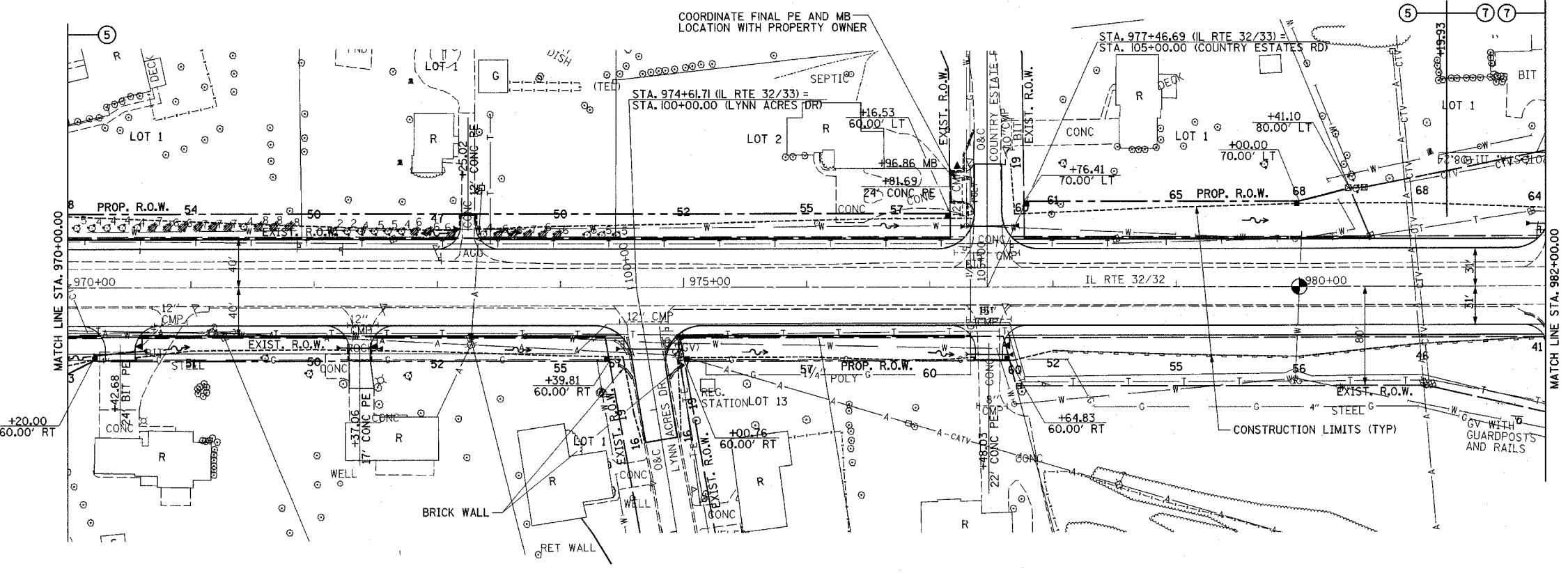
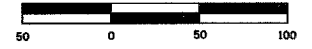


F.A.P. RTE.	SECTION	COUNTY	TOTAL SHEETS	SHEET NO.
774	•	EFFINGHAM	273	58
STA. 970+00.00 TO STA. 982+00.00				
FED. ROAD DIST. NO. 7 ILLINOIS FED. AID PROJECT				
• 107WRS-1, 107BY, 107BY-1 & 107B-2				
CONTRACT NO. 94827				



- PERMANENT SURVEY MARKERS, TYPE J
STA. 980+00.00 1 EACH
- VALVE BOXES TO BE ADJUSTED
LT STA. 979+96.71 1 EACH
- COMBINATION CONCRETE CURB AND GUTTER REMOVAL
RT STA 981+83.27 - STA. 982+01.11 86'
- GUTTER REMOVAL
LT STA. 98+75.00 - STA. 99+61.31 86'
RT STA. 98+75.00 - STA. 99+56.50 82'
TOTAL 168'
- BRICK WALL REMOVAL
RT STA. 974+44.08 - 974+54.73 16'
RT STA. 974+85.93 - 974+94.43 15'
TOTAL 31'
- BRICK WALL
RT STA. 974+47.70 - 974+58.80 16'
RT STA. 974+88.60 - 974+99.80 16'
TOTAL 32'
(SEE SHEET 113 FOR BRICK WALL DETAILS)

PLAN	SURVEYED	DATE
	ALIGNMENT CHECKED	
	BY	
	NOTE BOOK	
	NO. OF PAGES CHECKED	
	DATE	

PROFILE	SURVEYED	DATE
	GRADES CHECKED	
	BY	
	NOTE BOOK	
	NO. OF PAGES CHECKED	
	DATE	

