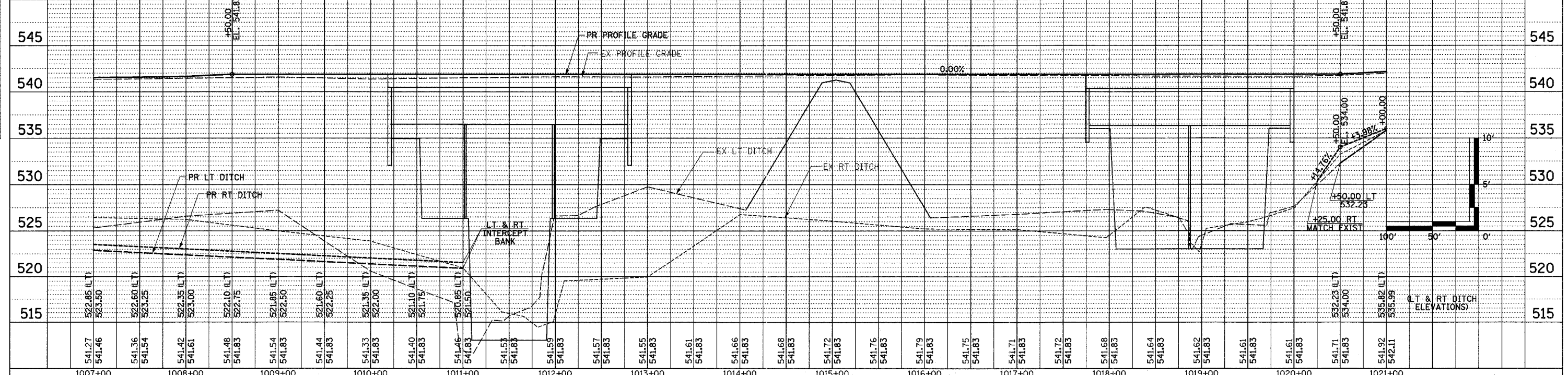
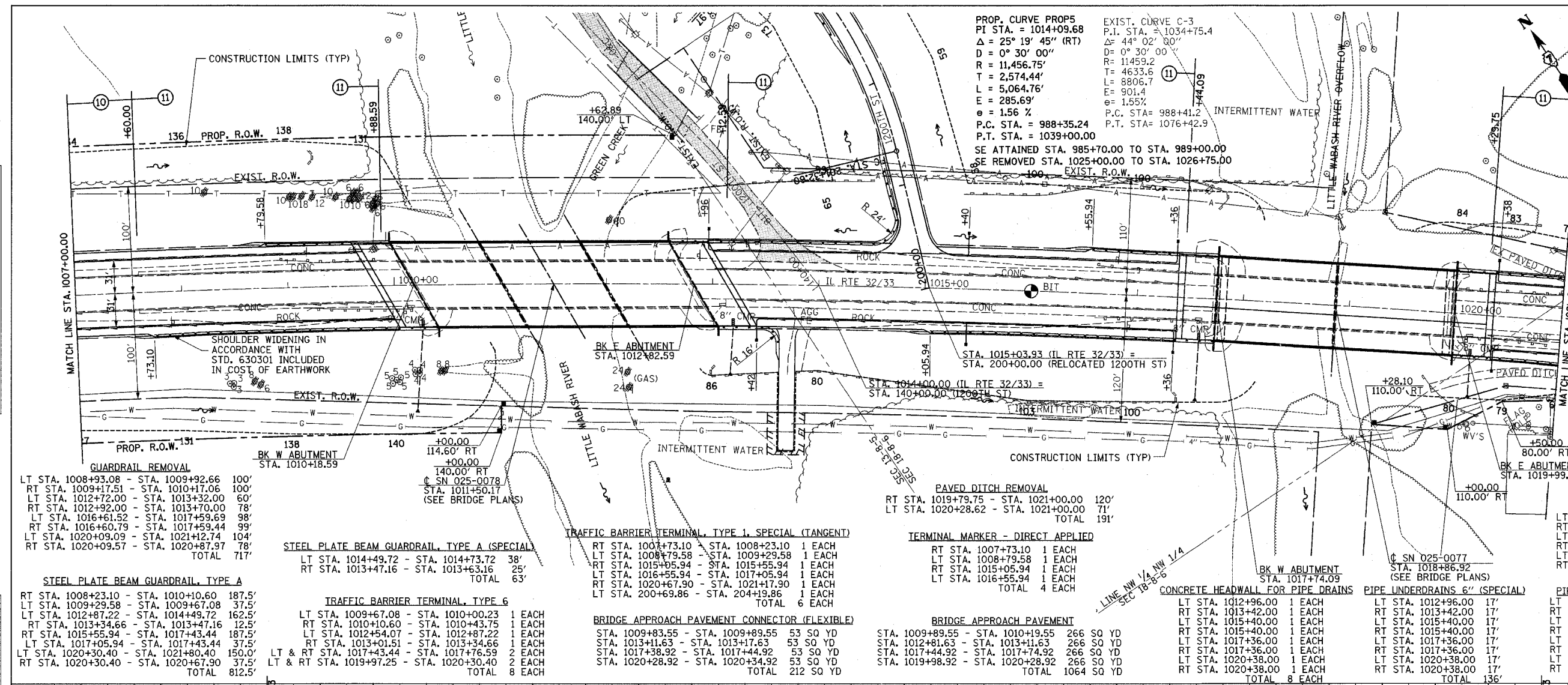


F.A.P. RTE.	SECTION	COUNTY	TOTAL SHEETS	SHEET NO.
774		EFFINGHAM	273	61

STA. 1007+00.00 TO STA. 1021+00.00
 FED. ROAD DIST. NO. 7 ILLINOIS FED. AID PROJECT
 * 107WRS-1, 107BY, 107BY-1 & 107B-2
CONTRACT NO. 94827

- PERMANENT SURVEY MARKERS, TYPE I**
 STA. 1016+00.00 1 EACH
- TYPE D INLET BOX, STANDARD 609006**
 RT STA. 1010+26.80 1 EACH
 RT STA. 1013+19.80 1 EACH
 RT STA. 1017+59.66 1 EACH
 RT STA. 1020+16.30 1 EACH
 TOTAL 4 EACH
- REMOVE INLET BOX**
 RT STA. 1010+15.85 1 EACH
 RT STA. 1013+09.67 1 EACH
 RT STA. 1017+58.81 1 EACH
 RT STA. 1020+14.91 1 EACH
 TOTAL 4 EACH
- PIPE DRAINS, 12"**
 RT STA. 1010+26.80 80'
 RT STA. 1013+19.80 60'
 RT STA. 1017+59.66 65'
 RT STA. 1020+16.30 56'
 TOTAL 261'
- CONCRETE THRUST BLOCKS**
 RT STA. 1010+26.80 1 EACH
 RT STA. 1013+19.80 1 EACH
 RT STA. 1017+59.66 1 EACH
 RT STA. 1020+16.30 1 EACH
 TOTAL 4 EACH
- END SECTIONS, 12"**
 RT STA. 1010+26.80 1 EACH
 RT STA. 1013+19.80 1 EACH
 RT STA. 1017+59.66 1 EACH
 RT STA. 1020+16.30 1 EACH
 TOTAL 4 EACH
- PIPE UNDERDRAIN REMOVAL**
 LT STA. 1007+00.00 - STA. 1009+80.00 280'
 RT STA. 1007+00.00 - STA. 1009+98.00 298'
 LT STA. 1013+02.00 - STA. 1017+44.00 422'
 RT STA. 1013+22.00 - STA. 1017+44.00 422'
 LT STA. 1020+32.00 - STA. 1021+00.00 68'
 RT STA. 1020+32.00 - STA. 1021+00.00 68'
 TOTAL 1578'
- PIPE UNDERDRAINS FABRIC LINED TRENCH, 6"**
 LT STA. 1007+00.00 - STA. 1009+70.00 270'
 RT STA. 1007+00.00 - STA. 1010+08.00 308'
 LT STA. 1012+96.00 - STA. 1016+00.00 304'
 RT STA. 1013+42.00 - STA. 1016+00.00 258'
 LT STA. 1016+00.00 - STA. 1017+36.00 136'
 RT STA. 1016+00.00 - STA. 1017+36.00 136'
 LT STA. 1020+38.00 - STA. 1021+00.00 62'
 RT STA. 1020+38.00 - STA. 1021+00.00 62'
 TOTAL 1536'



DATE	BY	REVISION

DATE	BY	REVISION

- GUARDRAIL REMOVAL**
 LT STA. 1008+93.08 - STA. 1009+92.66 100'
 RT STA. 1009+17.51 - STA. 1010+17.06 100'
 LT STA. 1012+72.00 - STA. 1013+32.00 60'
 RT STA. 1012+92.00 - STA. 1013+70.00 78'
 LT STA. 1016+61.52 - STA. 1017+59.69 98'
 RT STA. 1016+60.79 - STA. 1017+59.44 99'
 LT STA. 1020+09.09 - STA. 1021+12.74 104'
 RT STA. 1020+09.57 - STA. 1020+87.97 78'
 TOTAL 717'
- STEEL PLATE BEAM GUARDRAIL, TYPE A (SPECIAL)**
 LT STA. 1014+49.72 - STA. 1014+73.72 38'
 RT STA. 1013+47.16 - STA. 1013+63.16 25'
 TOTAL 63'
- TRAFFIC BARRIER TERMINAL, TYPE 6**
 LT STA. 1009+67.08 - STA. 1010+00.23 1 EACH
 RT STA. 1010+10.60 - STA. 1010+43.75 1 EACH
 LT STA. 1012+54.07 - STA. 1012+87.22 1 EACH
 RT STA. 1013+01.51 - STA. 1013+34.66 1 EACH
 LT & RT STA. 1017+43.44 - STA. 1017+76.59 2 EACH
 LT & RT STA. 1019+97.25 - STA. 1020+30.40 2 EACH
 TOTAL 8 EACH
- BRIDGE APPROACH PAVEMENT CONNECTOR (FLEXIBLE)**
 STA. 1009+83.55 - STA. 1009+89.55 53 SQ YD
 STA. 1013+11.63 - STA. 1013+17.63 53 SQ YD
 STA. 1017+38.92 - STA. 1017+44.92 53 SQ YD
 STA. 1020+28.92 - STA. 1020+34.92 53 SQ YD
 TOTAL 212 SQ YD
- BRIDGE APPROACH PAVEMENT**
 STA. 1009+89.55 - STA. 1010+19.55 266 SQ YD
 STA. 1012+81.63 - STA. 1013+11.63 266 SQ YD
 STA. 1017+44.92 - STA. 1017+74.92 266 SQ YD
 STA. 1019+98.92 - STA. 1020+28.92 266 SQ YD
 TOTAL 1064 SQ YD
- CONCRETE HEADWALL FOR PIPE DRAINS**
 LT STA. 1012+96.00 1 EACH
 RT STA. 1013+42.00 1 EACH
 LT STA. 1015+40.00 1 EACH
 RT STA. 1015+40.00 1 EACH
 LT STA. 1017+36.00 1 EACH
 RT STA. 1017+36.00 1 EACH
 LT STA. 1020+38.00 1 EACH
 RT STA. 1020+38.00 1 EACH
 TOTAL 8 EACH
- PIPE UNDERDRAINS 6" (SPECIAL)**
 LT STA. 1012+96.00 17'
 RT STA. 1013+42.00 17'
 LT STA. 1015+40.00 17'
 RT STA. 1015+40.00 17'
 LT STA. 1017+36.00 17'
 RT STA. 1017+36.00 17'
 LT STA. 1020+38.00 17'
 RT STA. 1020+38.00 17'
 TOTAL 136'