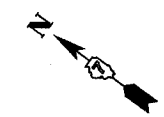


F.A.P. RTE.	SECTION	COUNTY	TOTAL SHEETS	SHEET NO.
774		EFFINGHAM	273	66
STA. 44+00.00 TO STA. 49+20.13				
FED. ROAD DIST. NO. 7 ILLINOIS FED. AID PROJECT				
• 107WRS-1, 107BY, 107BY-1 & 107B-2				
<b>CONTRACT NO. 94827</b>				



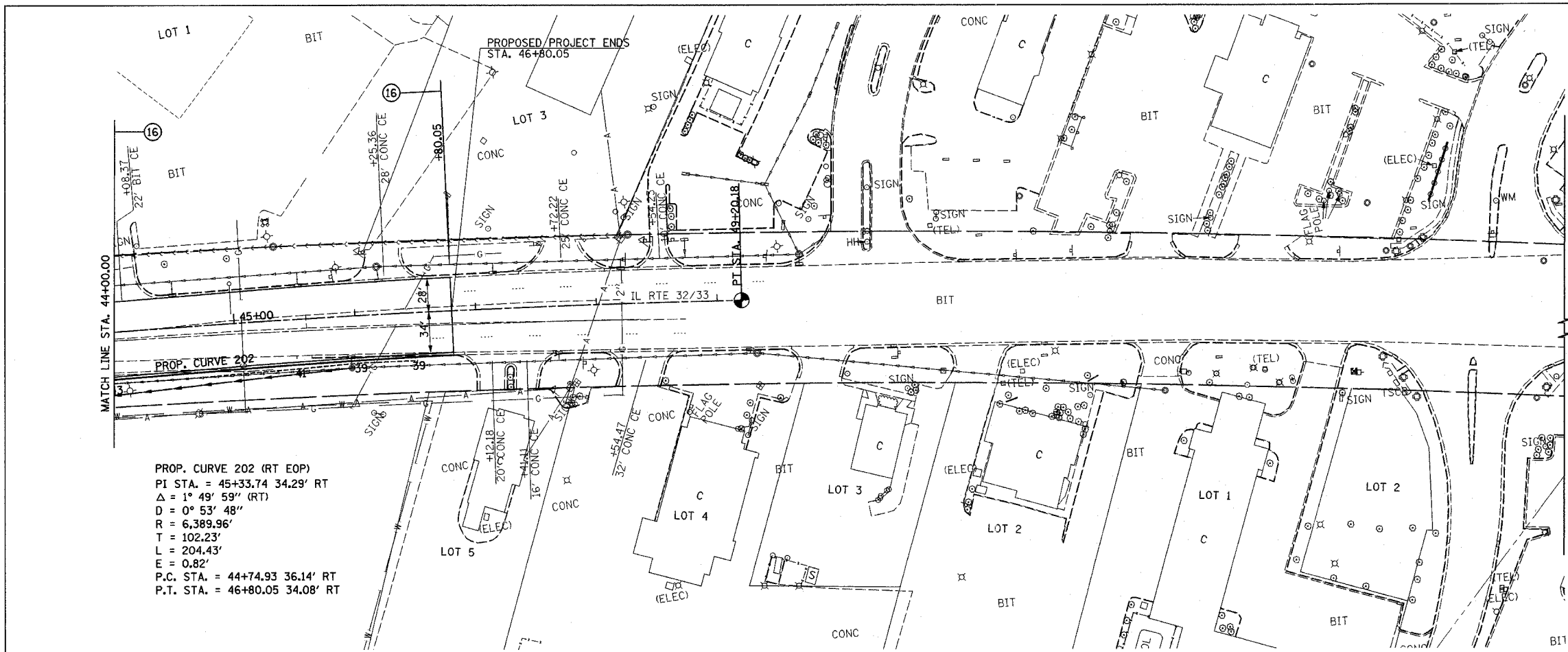
- PERMANENT SURVEY MARKER, TYPE I  
PT STA. 49+20.18 1 EACH
- STORM SEWER REMOVAL, 24"  
RT STA. 44+00.00 - STA. 45+95.00 195'
- INLETS TO BE ADJUSTED WITH NEW  
TYPE 3 FRAME AND GRATE  
RT STA. 45+95.00 1 EACH
- COMBINATION CURB AND GUTTER TYPE B-6.24  
RT STA. 44+00.00 - STA. 46+80.05 280'
- MEDIAN REMOVAL PARTIAL DEPTH  
STA. 44+00.00 - STA. 45+60.00 1272 50 FT
- COMBINATION CURB AND GUTTER REMOVAL  
RT STA. 44+00.00 - STA. 45+80.05 180'

SEE STORM SEWER  
SCHEDULE SHEET 28

PROP. CURVE PROP4-2  
P.I. STA. = 45+21.11  
 $\Delta = 4^{\circ} 27' 29''$  (RT)  
D = 0° 33' 30"  
R = 10,263.16'  
T = 399.48'  
L = 798.55'  
E = 7.77'  
e = N/C  
P.C. STA = 41+21.63  
P.T. STA = 49+20.18

EXIST. CURVE C-3  
P.I. STA. = 1034+75.4  
 $\Delta = 44^{\circ} 02' 00''$   
D = 0° 30' 00"  
R = 11459.2  
T = 4633.6  
L = 8806.7  
E = 901.4  
e = 1.55%  
P.C. STA = 988+41.2  
P.T. STA = 1076+42.9

PROP. CURVE 202 (RT EOP)  
P.I. STA. = 45+33.74 34.29' RT  
 $\Delta = 1^{\circ} 49' 59''$  (RT)  
D = 0° 53' 48"  
R = 6,389.96'  
T = 102.23'  
L = 204.43'  
E = 0.82'  
P.C. STA. = 44+74.93 36.14' RT  
P.T. STA. = 46+80.05 34.08' RT



PLAN	DATE
BY	
CHECKED	
NO. _____	

PROFILE	DATE
BY	
CHECKED	
NO. _____	

