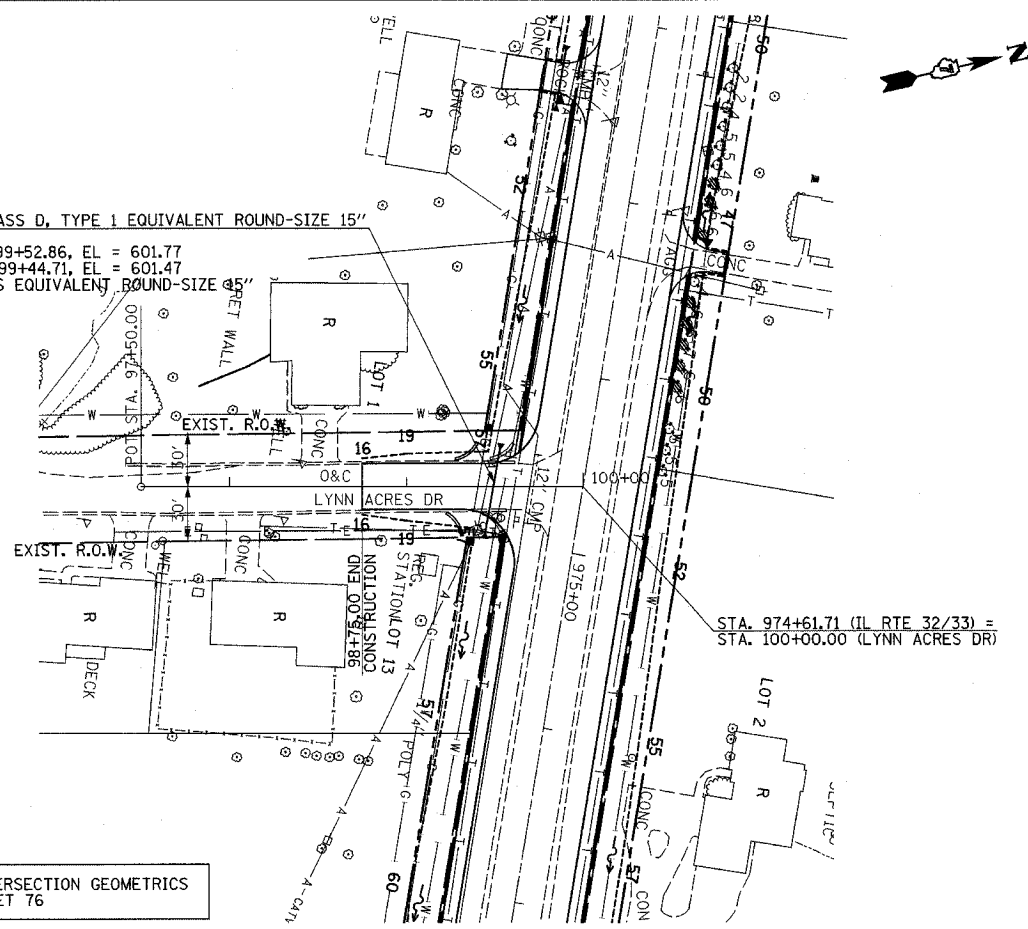


F.A.P. RTE.	SECTION	COUNTY	TOTAL SHEETS	SHEET NO.
774	*	EFFINGHAM	273	69

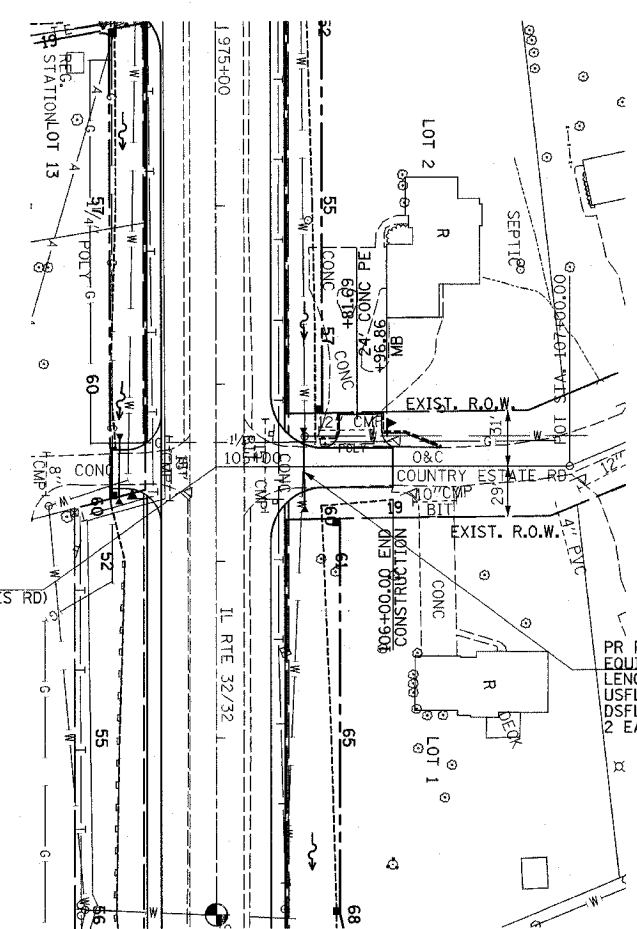
FED. ROAD DIST. NO. 7 ILLINOIS FED. AID PROJECT
 • 107WRS-1, 107BY, 107BY-1 & 107B-2
CONTRACT NO. 94827

PR PIPE CULVERT, CLASS D, TYPE 1 EQUIVALENT ROUND-SIZE 15"
 LENGTH = 47'
 USFL = 21' LT, STA. 99+52.86, EL = 601.77
 DSFL = 26' RT, STA. 99+44.71, EL = 601.47
 2 EACH, END SECTIONS EQUIVALENT ROUND-SIZE 15"



FOR INTERSECTION GEOMETRICS
SEE SHEET 76

STA. 977+46.69 (IL RTE 32/33) =
 STA. 105+00.00 (COUNTRY ESTATES RD)

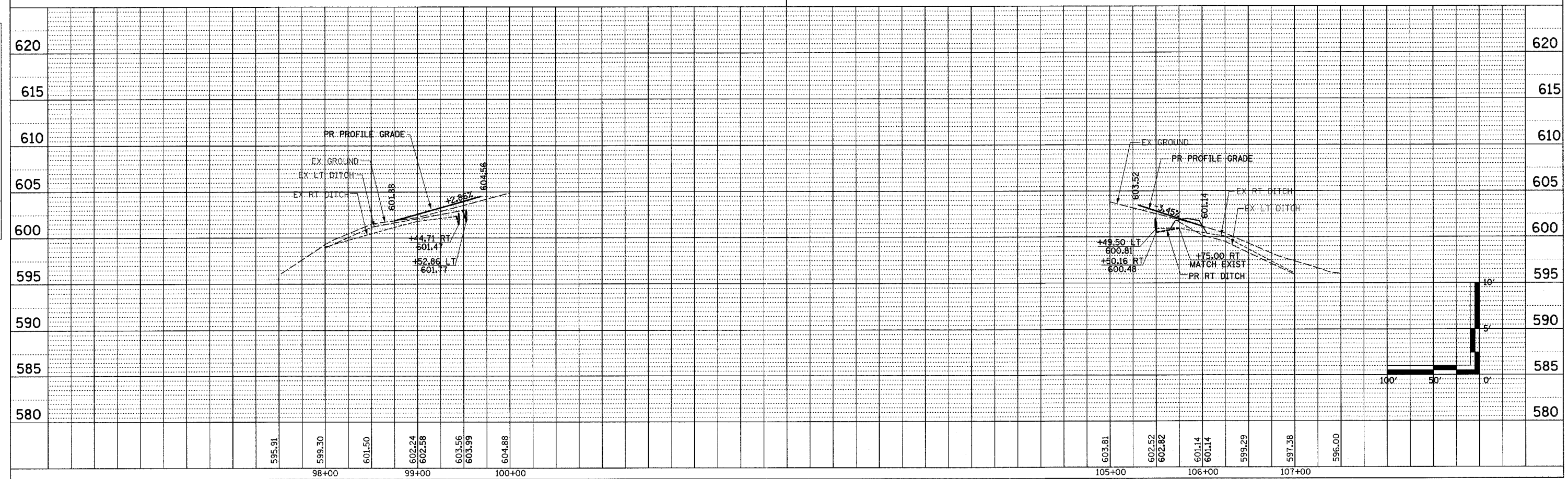


PR PIPE CULVERT, CLASS D, TYPE 1
 EQUIVALENT ROUND-SIZE 15"
 LENGTH = 40'
 USFL = 18' LT, STA. 105+49.50, EL = 600.81
 DSFL = 22' RT, STA. 105+50.16, EL = 600.48
 2 EACH, END SECTIONS EQUIVALENT ROUND-SIZE 15"

FOR INTERSECTION GEOMETRICS
SEE SHEET 76

PLAN	DATE
SURVEYED	
ALIGNED	
CHECKED	
BY	
NO.	

PROFILE	DATE
SURVEYED	
GRADES CHECKED	
BY	
NO.	



LYNN ACRES DR & COUNTRY ESTATES RD PUBLIC ROAD SHEET 3 OF 8