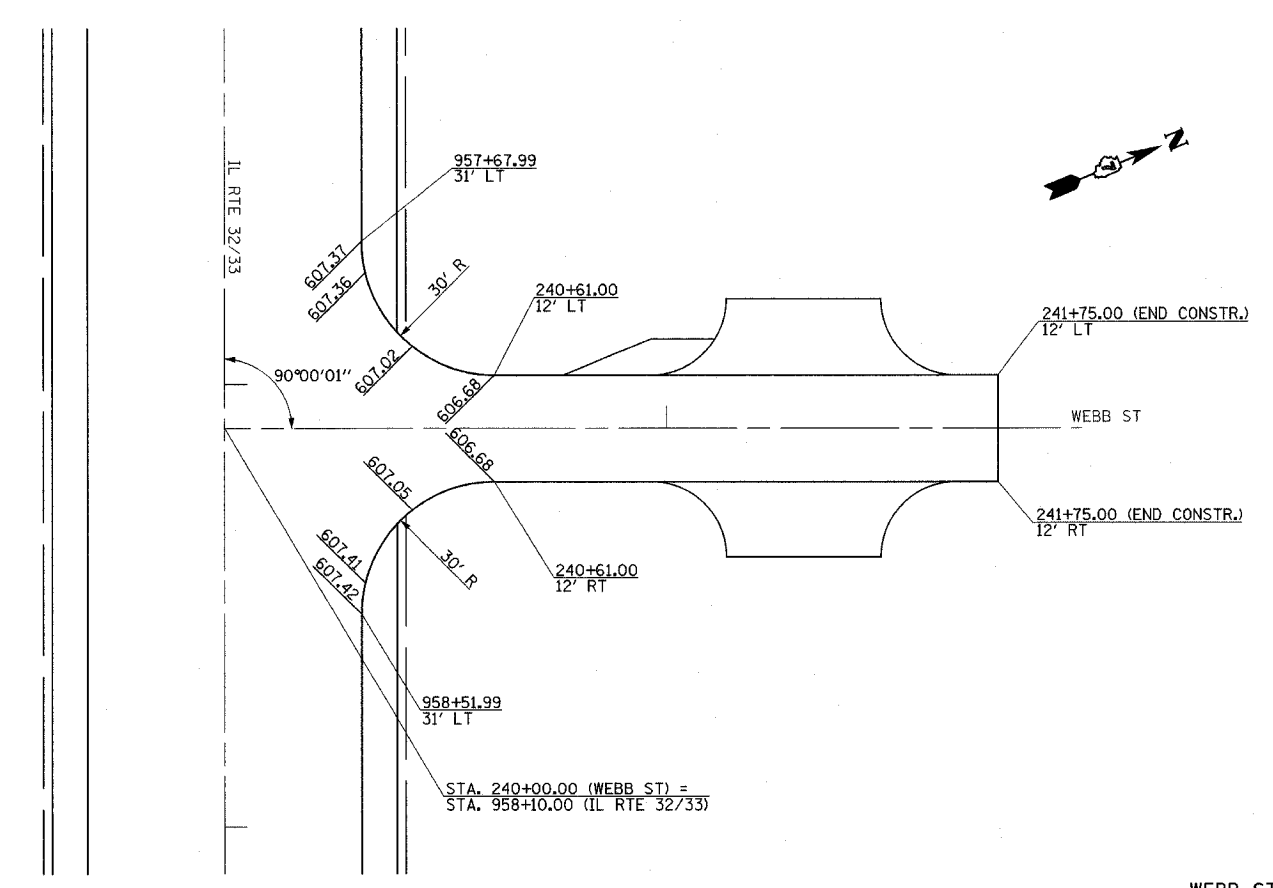
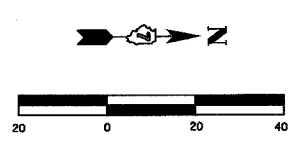
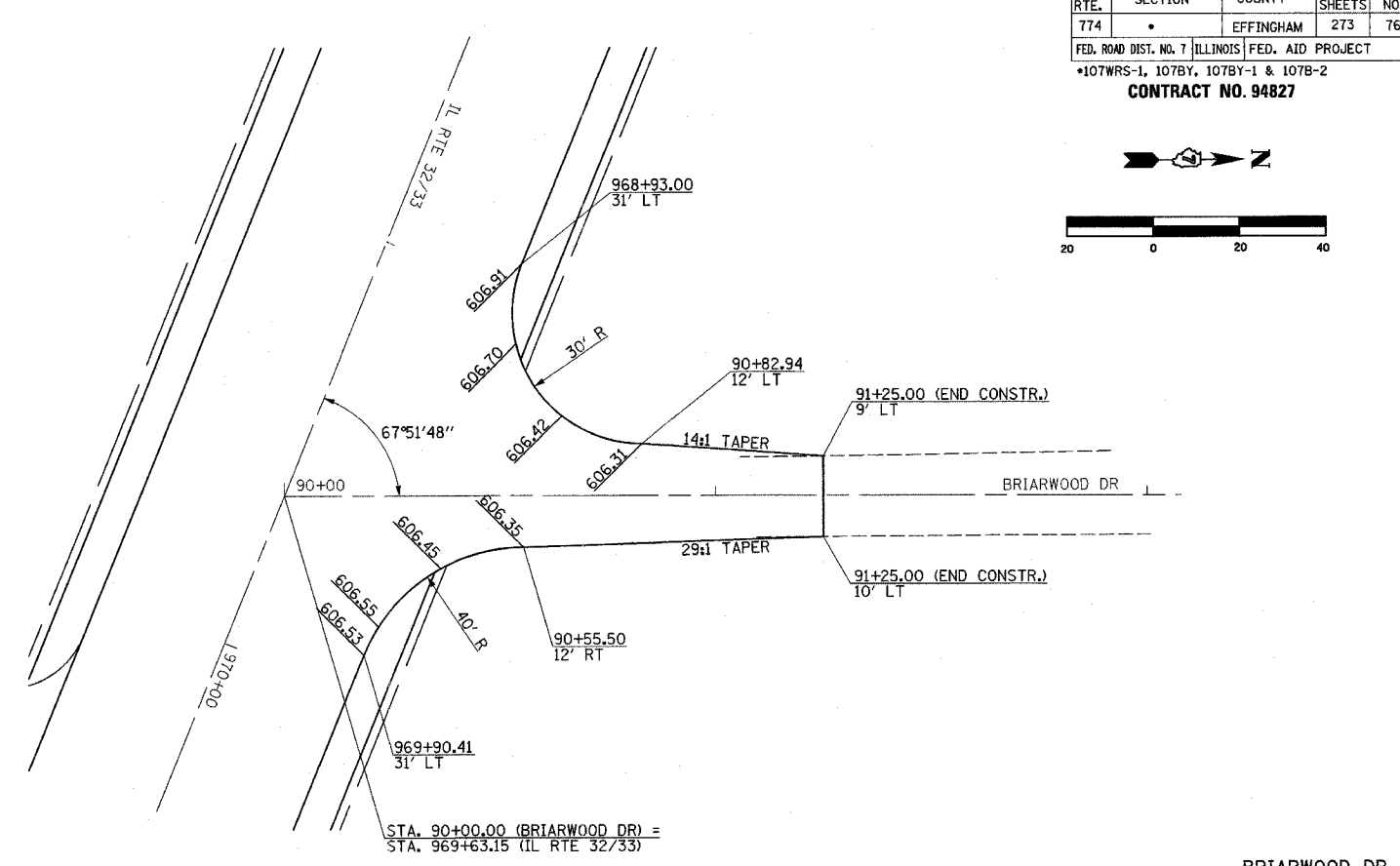


F.A.P. RTE.	SECTION	COUNTY	TOTAL SHEETS	SHEET NO.
774		EFFINGHAM	273	76

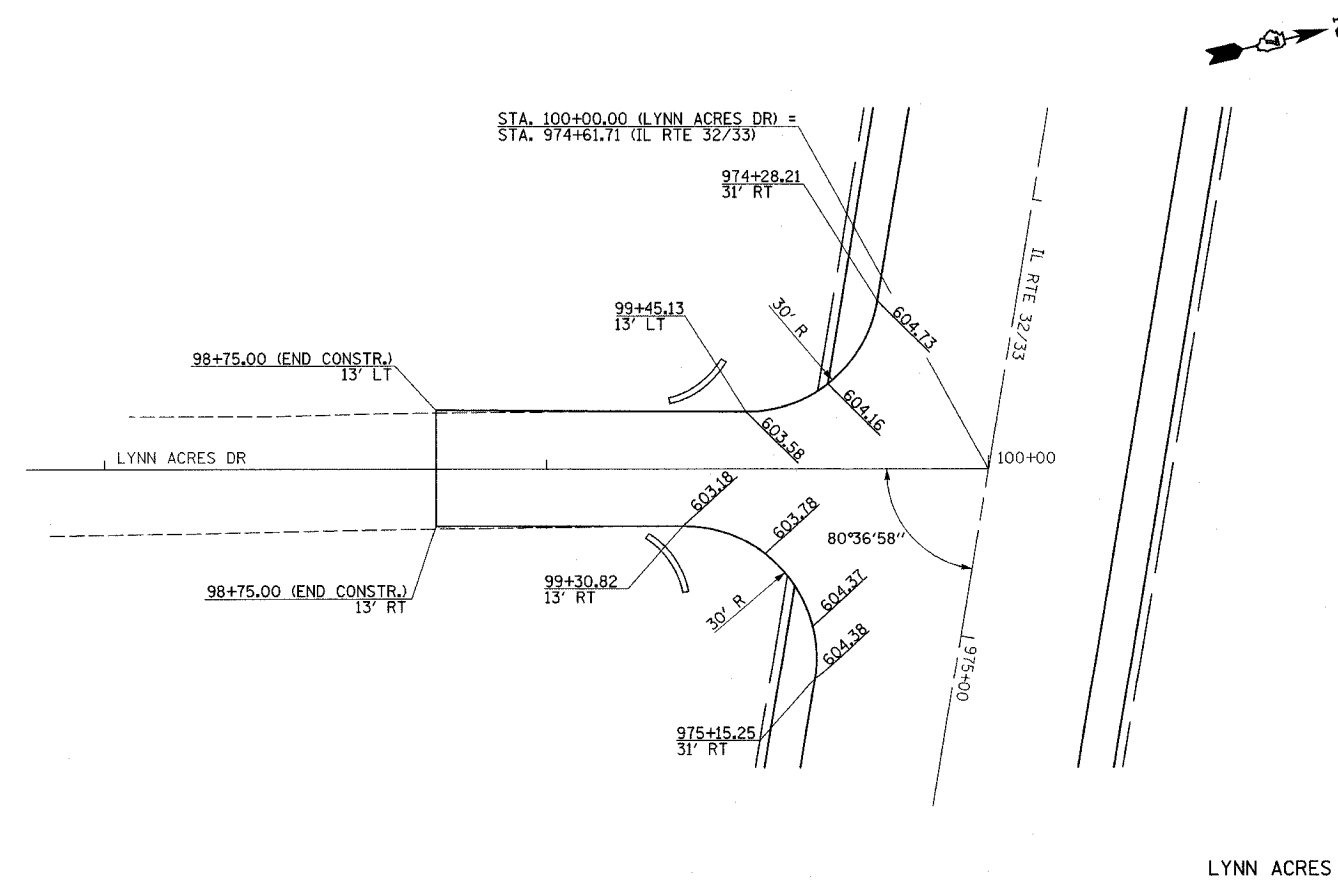
FED. ROAD DIST. NO. 7 ILLINOIS FED. AID PROJECT
 *107WRS-1, 107BY, 107BY-1 & 107B-2
CONTRACT NO. 94827



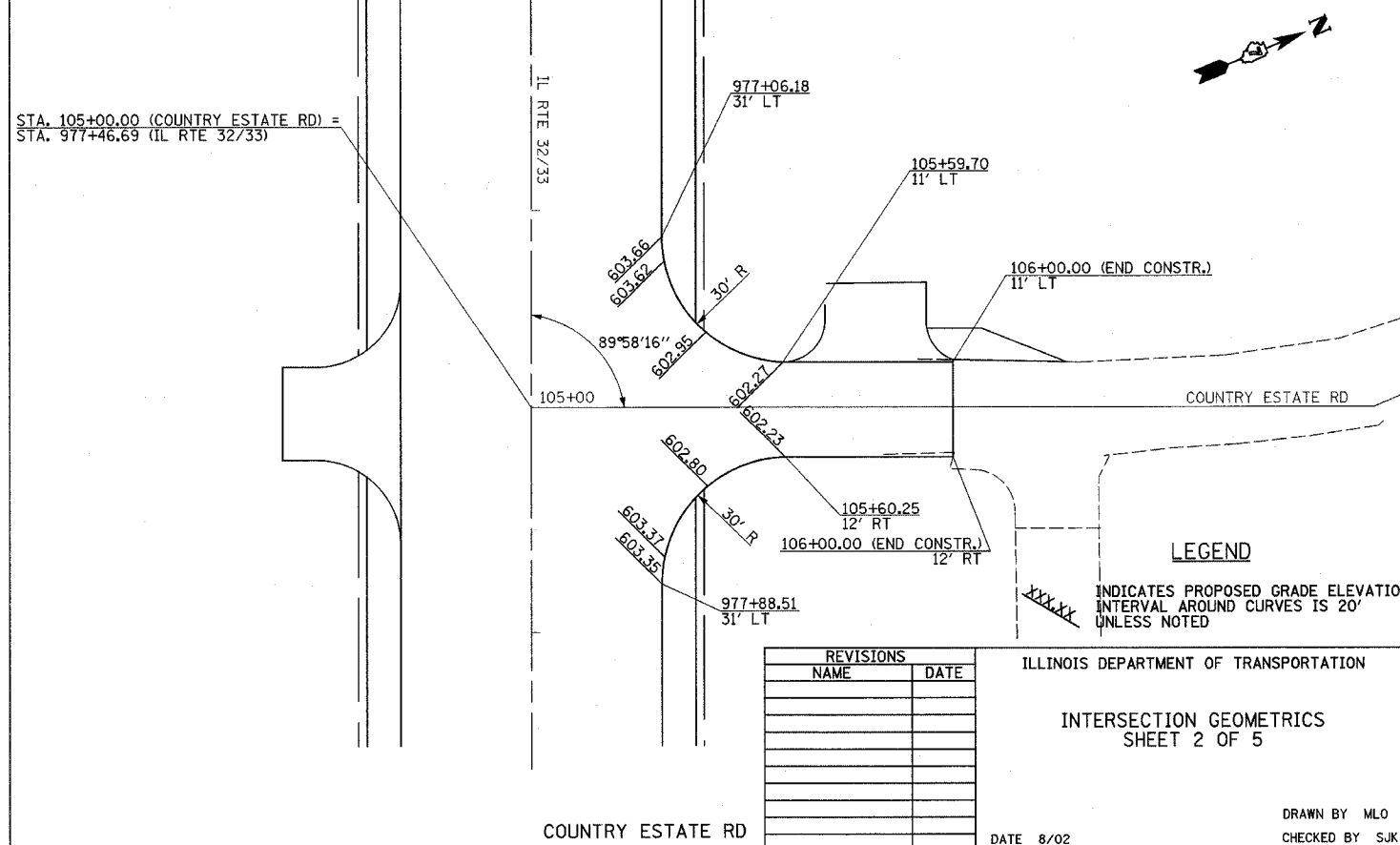
WEBB ST



BRIARWOOD DR



LYNN ACRES DR



COUNTRY ESTATE RD

LEGEND
 XXXXX INDICATES PROPOSED GRADE ELEVATION INTERVAL AROUND CURVES IS 20' UNLESS NOTED

REVISIONS	
NAME	DATE

ILLINOIS DEPARTMENT OF TRANSPORTATION
 INTERSECTION GEOMETRICS
 SHEET 2 OF 5
 DATE 8/02
 DRAWN BY MLO
 CHECKED BY SJK