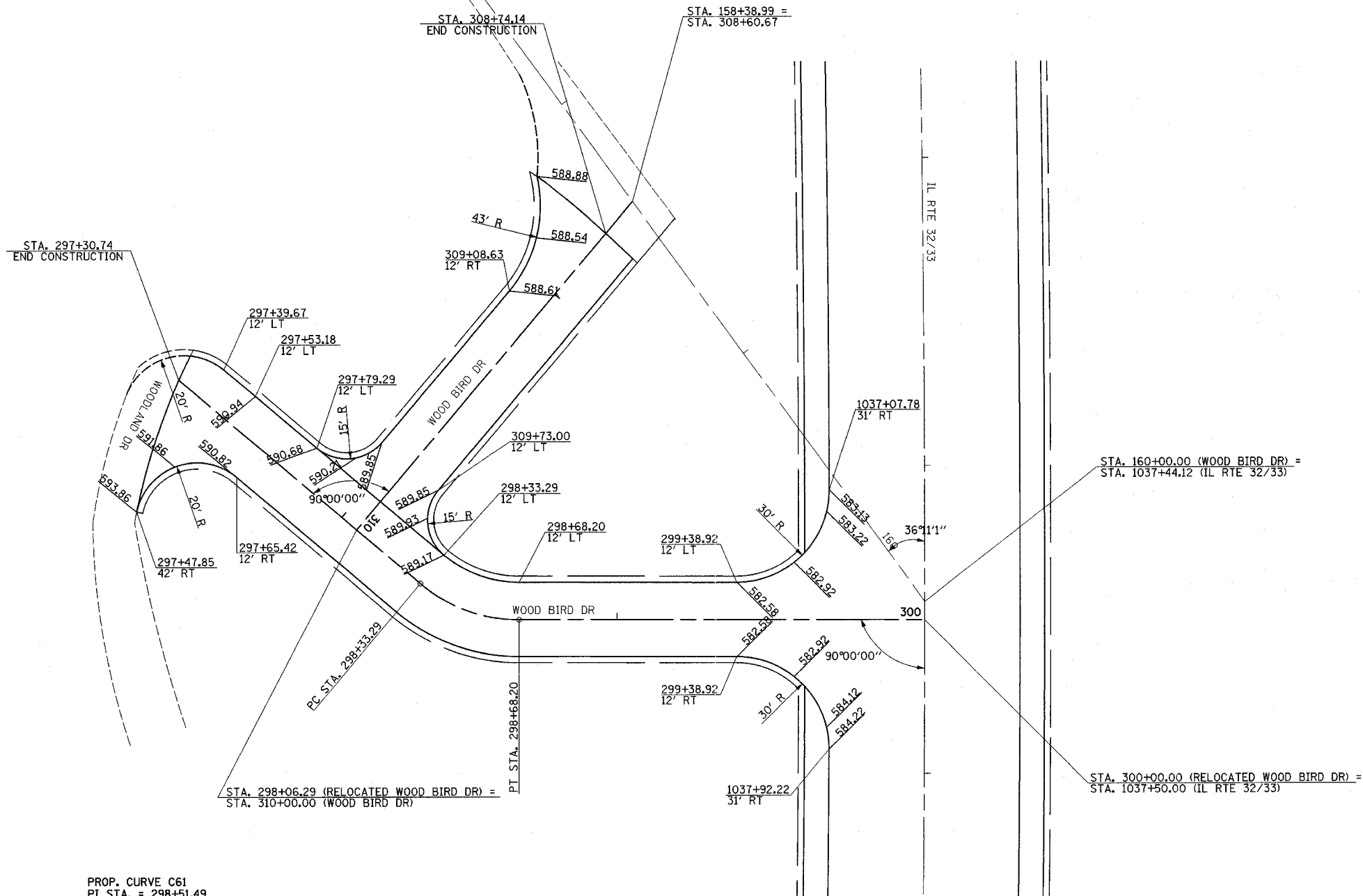
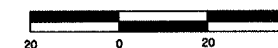
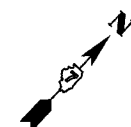


| | | | | |
|---|---------|-----------|--------------|-----------|
| F.A.P. RTE. | SECTION | COUNTY | TOTAL SHEETS | SHEET NO. |
| 774 | . | EFFINGHAM | 273 | 78 |
| FED. ROAD DIST. NO. 7 ILLINOIS FED. AID PROJECT | | | | |
| *107WRS-1, 107BY, 107BY-1 & 107B-2 | | | | |
| CONTRACT NO. 94827 | | | | |



PROP. CURVE C61
 PI STA. = 298+51.49
 $\Delta = 40^\circ 00' 00''$ (LT)
 $D = 114^\circ 35' 30''$
 $R = 50.00'$
 $T = 18.20'$
 $L = 34.91'$
 $E = 3.21'$
 $e = N/C$
 P.C. STA. = 298+33.29
 P.T. STA. = 298+68.20

LEGEND
 XXXXX INDICATES PROPOSED GRADE ELEVATION INTERVAL AROUND CURVES IS 20' UNLESS NOTED

| REVISIONS | |
|-----------|------|
| NAME | DATE |
| | |
| | |
| | |
| | |
| | |
| | |
| | |
| | |
| | |
| | |

ILLINOIS DEPARTMENT OF TRANSPORTATION
 INTERSECTION GEOMETRICS
 SHEET 4 OF 5
 DRAWN BY MLO
 CHECKED BY SJK
 DATE 8/02