

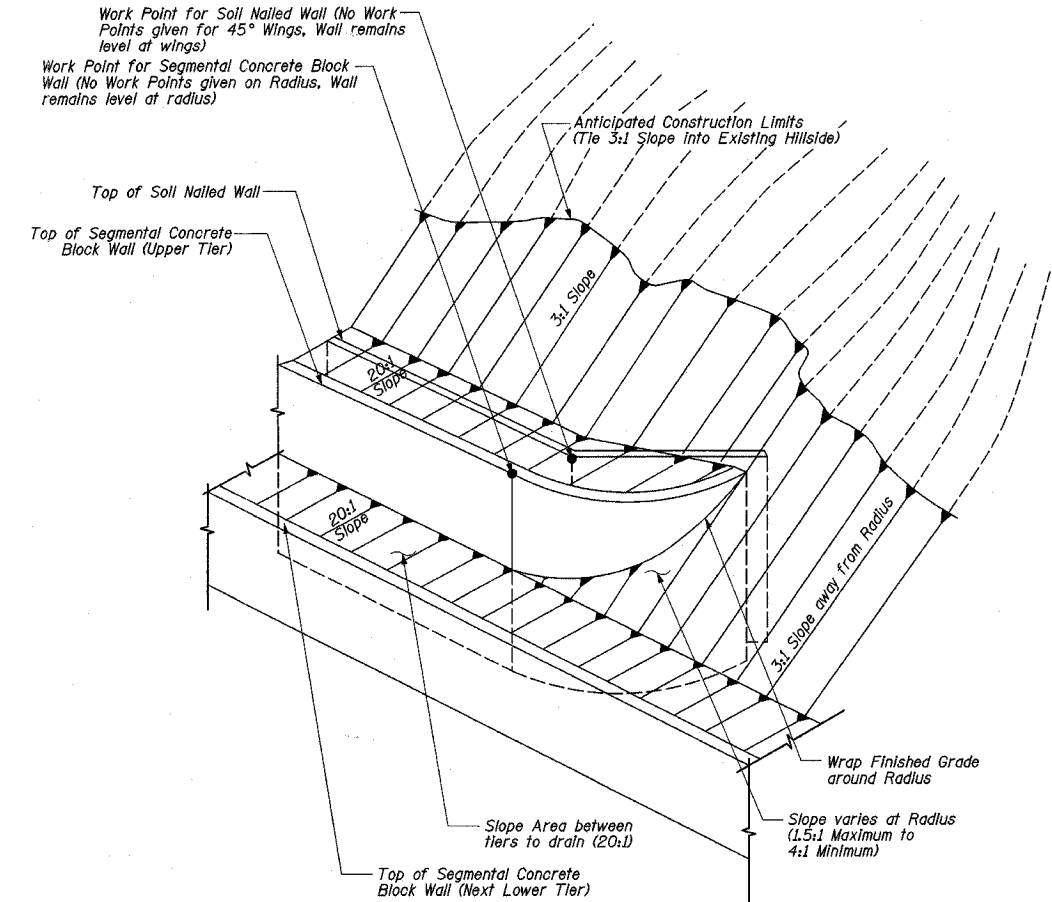
STATE OF ILLINOIS  
DEPARTMENT OF TRANSPORTATION

F.A.P. RTE.	SECTION	COUNTY	TOTAL SHEETS	SHEET NO.
774	*	EFFINGHAM	273	94
FED. ROAD DIST. NO. 7 ILLINOIS		FED. AID PROJECT		
* 107WRS-1, 107BY, 107BY-1 & 107B-2				
CONTRACT NO. 94827				

SHEET NO. 6  
OF 14 SHEETS

Tier	Station	Soil Nailed Wall Work Points			Segmental Concrete Block Wall Work Points		
		Offset	Top of Wall Elevation	Bottom of Wall Elevation	Offset	Top of Wall Elevation	Bottom of Wall Elevation
7	1027+75.00	70'-3"	586.20	580.68	68'-0"	586.20	581.18
7	1028+00.00	70'-3"	587.22		68'-0"	587.22	
7	1028+25.00	70'-3"	587.22	582.74	68'-0"	587.22	583.24
6	1027+20.00	66'-3"	580.17	574.41	64'	580.17	574.90
6	1027+27.00	66'-3"	580.68		64'		
6	1027+50.00	66'-3"			64'	582.17	
6	1027+75.00	66'-3"	580.68		64'		
6	1028+25.00	66'-3"	582.74		64'	585.26	
6	1028+50.00	66'-3"			64'	585.29	
6	1029+00.00	66'-3"	586.34		64'	586.34	
6	1029+50.00	66'-3"	588.36		64'	588.36	
6	1029+60.00	66'-3"	588.36	584.23	64'	588.36	584.73
5	1026+95.00	62'-3"	573.70	569.41	60'	573.70	569.91
5	1027+00.00	62'-3"	574.41		60'		
5	1027+20.00	62'-3"	574.41		60'	576.92	
5	1029+60.00	62'-3"	584.23		60'		
5	1029+75.00	62'-3"			60'	587.35	
5	1029+93.00	62'-3"	585.55	581.58	60'	587.35	582.05
5	1032+07.00	62'-3"	594.18	588.66	60'	594.18	589.17
5	1032+50.00	62'-3"	595.24	589.73	60'	595.24	590.23
5	1032+93.00	62'-3"	596.19	590.66	60'	596.19	591.16
4	1026+81.00	58'-3"	569.41	564.86	56'	571.37	565.36
4	1026+95.00	58'-3"	569.41		56'		
4	1029+93.00	58'-3"	581.58		56'		
4	1030+00.00	58'-3"	581.83	577.83	56'	584.34	578.33
4	1030+20.00	58'-3"	582.62	578.62	56'	584.34	579.13
4	1030+90.00	58'-3"	587.64	581.09	56'	587.60	581.60
4	1031+00.00	58'-3"	587.96	581.45	56'	587.96	581.94
4	1031+20.00	58'-3"	588.62		56'	588.62	
4	1031+35.00	58'-3"	588.62		56'	588.62	583.12
4	1031+35.00	58'-3"	585.12		56'		
4	1031+50.00	58'-3"	584.57	583.05	56'		
4	1031+67.00	58'-3"	588.64		56'	590.07	584.06
4	1031+67.00	58'-3"	586.07		56'		
4	1032+00.00	58'-3"		584.50	56'	591.01	585.00
4	1032+07.00	58'-3"	588.66		56'		
4	1032+50.00	58'-3"	589.73	585.73	56'	592.24	586.23
4	1032+93.00	58'-3"	590.66	590.66	56'		
4	1033+00.00	58'-3"	590.79	586.81	56'	593.32	587.31
4	1033+27.00	58'-3"	591.30	587.28	56'	593.32	587.78
3	1026+50.00	54'-3"	564.11	559.60	52'	564.11	560.09
3	1026+57.00	54'-3"	564.86		52'		
3	1026+81.00	54'-3"	564.86		52'	567.37	
3	1030+00.00	54'-3"	577.83	573.83	52'	580.34	574.33
3	1030+20.00	54'-3"	578.62		52'	581.13	
3	1030+29.00	54'-3"	578.99		52'	581.13	575.47
3	1030+29.00	54'-3"	577.44		52'		
3	1030+50.00	54'-3"	577.21	575.68	52'		
3	1030+72.00	54'-3"	581.09		52'	583.00	577.01
3	1030+72.00	54'-3"	579.01		52'		
3	1030+90.00	54'-3"	581.09		52'		
3	1031+00.00	54'-3"	581.45	577.45	52'	583.96	577.94
3	1031+35.00	54'-3"			52'	585.12	
3	1031+50.00	54'-3"	583.05	579.06	52'	584.57	579.56
3	1031+67.00	54'-3"			52'	586.07	
3	1032+00.00	54'-3"	584.50	580.50	52'	587.01	581.01
3	1032+50.00	54'-3"	585.73	581.73	52'	588.24	582.23
3	1033+00.00	54'-3"	586.81	582.81	52'	589.32	583.31
3	1033+27.00	54'-3"	587.28		52'	589.79	
3	1033+43.00	54'-3"	587.57	583.56	52'	589.79	584.07

Tier	Station	Soil Nailed Wall Work Points			Segmental Concrete Block Wall Work Points		
		Offset	Top of Wall Elevation	Bottom of Wall Elevation	Offset	Top of Wall Elevation	Bottom of Wall Elevation
2	1026+32.00	50'-3"	559.60	554.86	48'	561.37	555.37
2	1026+50.00	50'-3"	559.60		48'		
2	1030+00.00	50'-3"	573.83	569.83	48'	576.34	570.33
2	1030+29.00	50'-3"			48'	577.45	
2	1030+50.00	50'-3"	575.68	571.70	48'	577.21	572.20
2	1030+72.00	50'-3"			48'	579.00	
2	1031+00.00	50'-3"	577.45	573.45	48'	579.96	573.95
2	1031+50.00	50'-3"	579.06	575.06	48'	581.57	575.56
2	1032+00.00	50'-3"	580.50	576.50	48'	583.01	577.00
2	1032+50.00	50'-3"	581.73	577.73	48'	584.24	578.23
2	1033+00.00	50'-3"	582.81	578.81	48'	585.32	579.31
2	1033+43.00	50'-3"	583.56		48'	586.08	
2	1033+50.00	50'-3"	583.68	579.69	48'	586.08	580.19
2	1033+68.00	50'-3"	584.00	580.13	48'	586.08	580.63
1	1026+10.00	46'-3"	554.86	549.99	44'	555.17	550.49
1	1026+32.00	46'-3"	554.86		44'	557.37	
1	1030+00.00	46'-3"	569.83	565.84	44'	572.34	566.34
1	1030+50.00	46'-3"	571.70	567.71	44'	574.21	568.21
1	1031+00.00	46'-3"	573.45	569.46	44'	575.96	569.96
1	1031+50.00	46'-3"	575.06	571.07	44'	577.57	571.57
1	1032+00.00	46'-3"	576.50	572.51	44'	579.01	573.01
1	1032+50.00	46'-3"	577.73	573.74	44'	580.24	574.24
1	1033+00.00	46'-3"	578.81	574.82	44'	581.32	575.32
1	1033+50.00	46'-3"	579.69	575.70	44'	582.20	576.20
1	1033+68.00	46'-3"			44'	582.65	
1	1033+81.00	46'-3"	580.46	576.47	44'	582.65	576.98



WORK POINT AND FINAL GRADING DETAIL

WALL ELEVATIONS  
ILLINOIS ROUTE 32/33  
F.A.P. ROUTE 774  
SECTION 107 WRS-1, 107BY,  
107BY-1 & 107B-2  
EFFINGHAM COUNTY  
RETAINING WALL  
STA. 1026+03.00 LT. TO STA. 1033+86.00 LT.  
STRUCTURE NUMBER 025-W00B